



*Art
Nouveau*



Características Principales :

∞ Formas orgánicas, Ondulantes y sinuosas inspiradas en la naturaleza. Formas asimétricas enriquecidas con muchos detalles





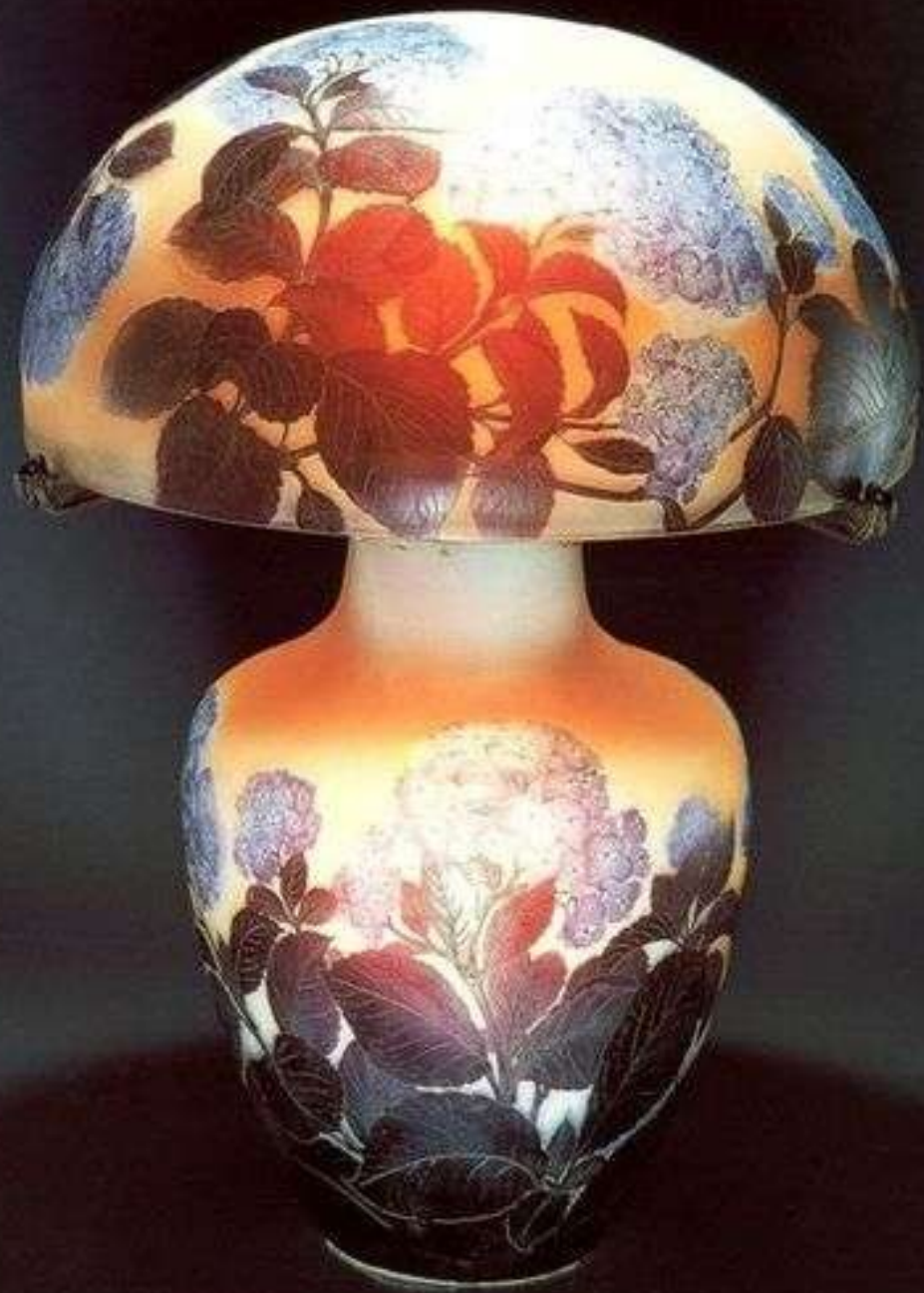
∞ *Emile Gallé*







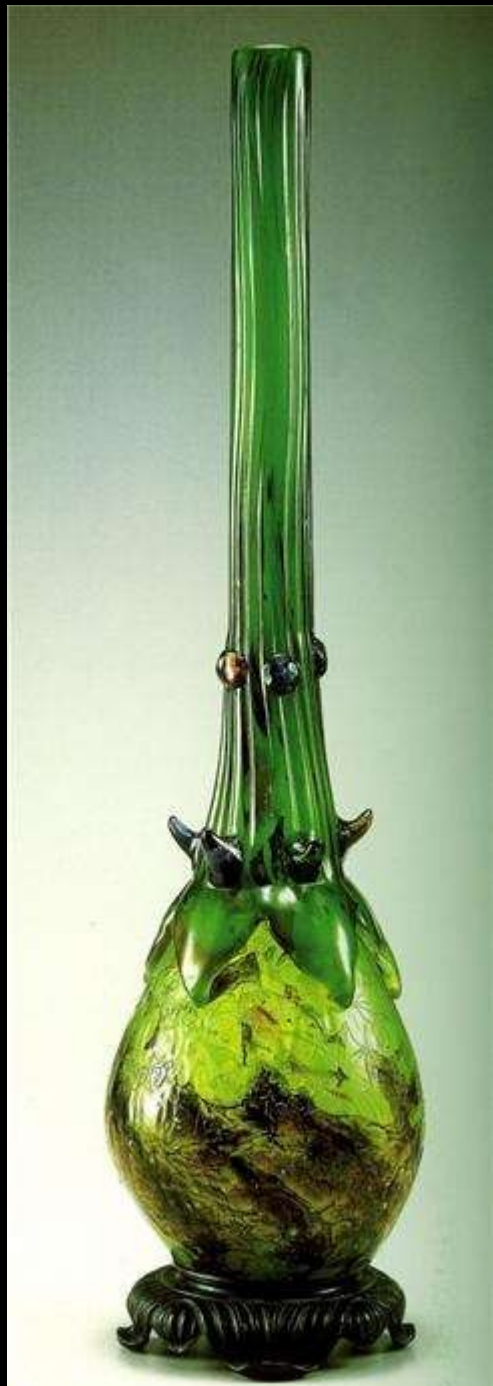






















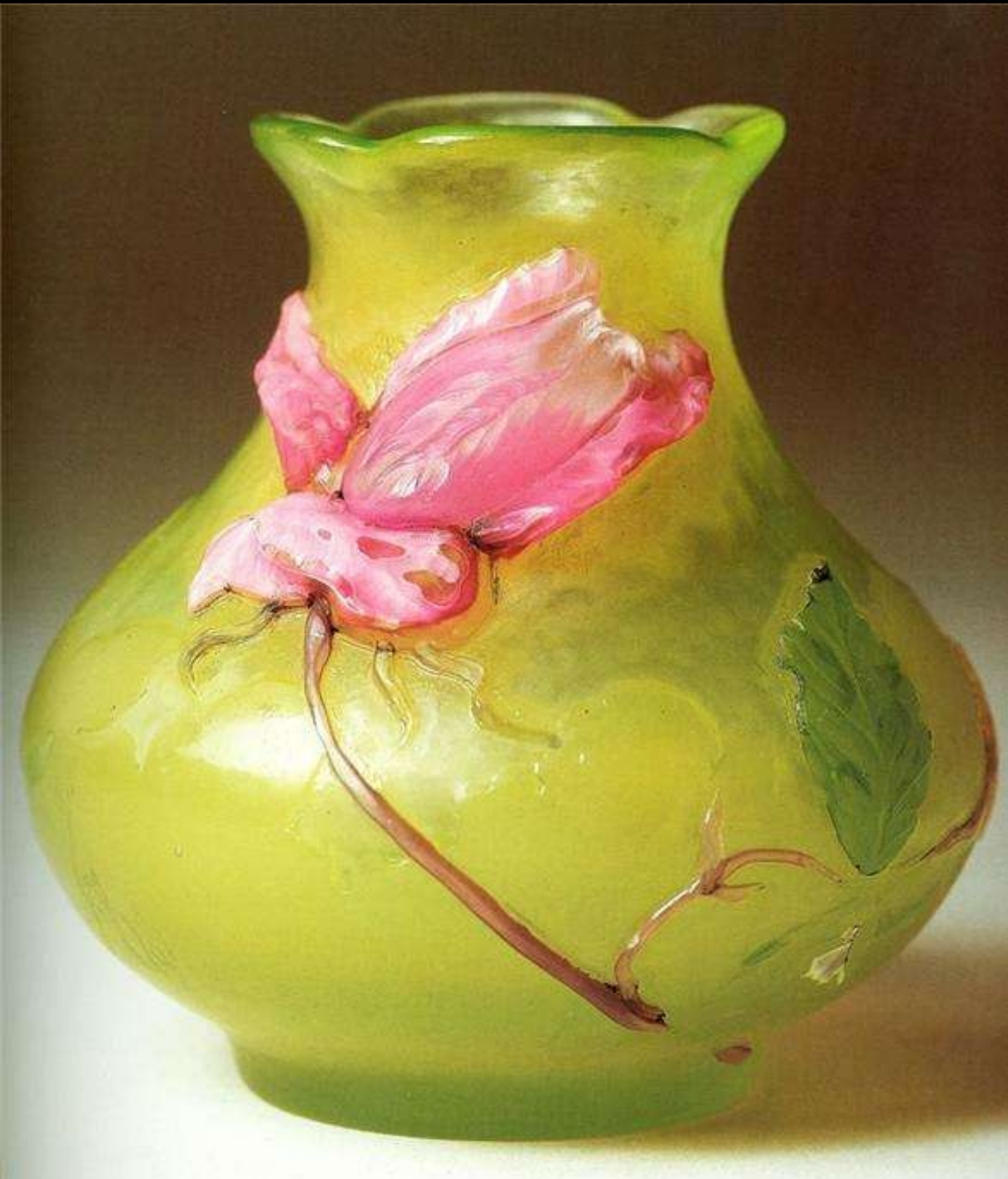


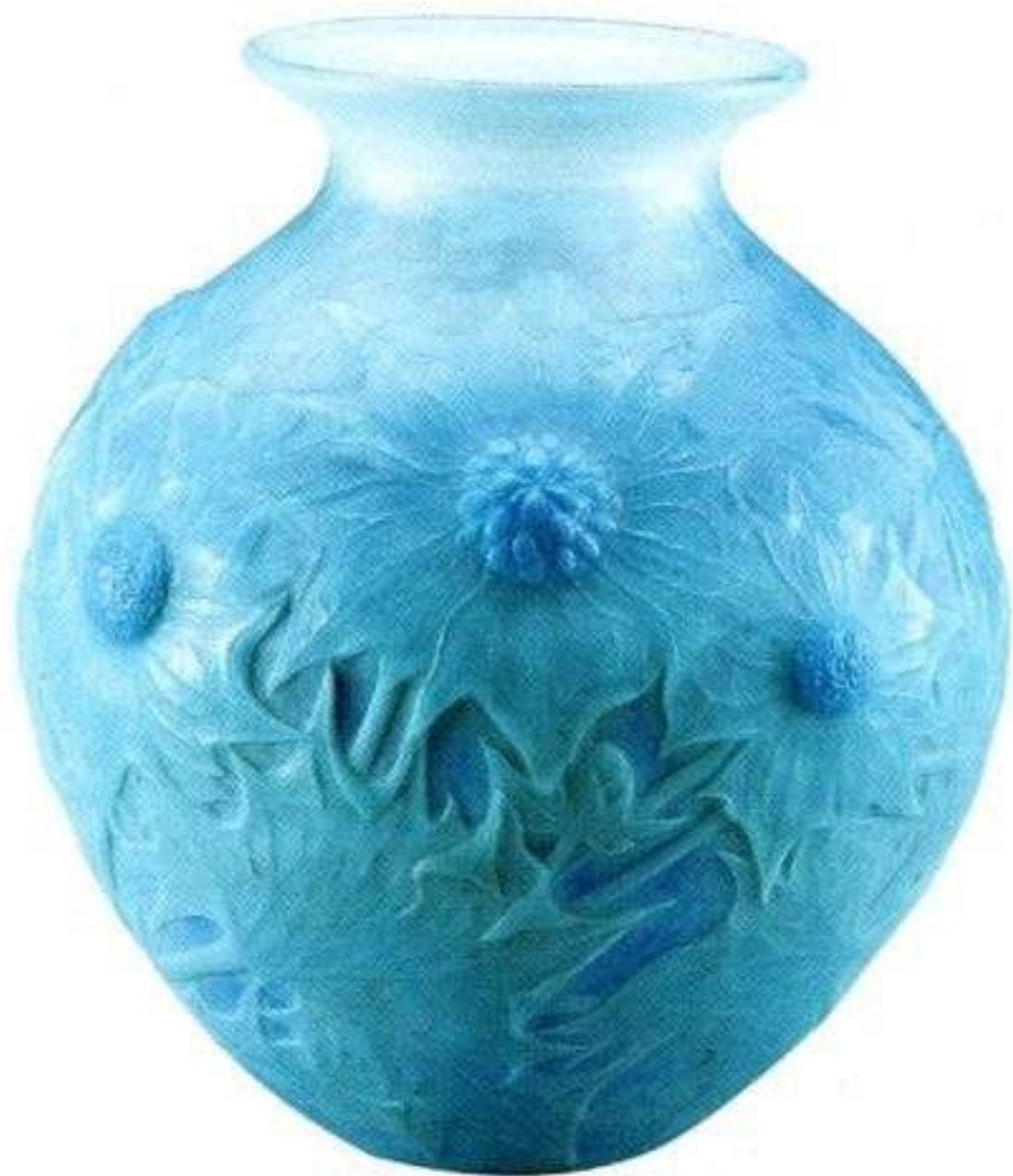








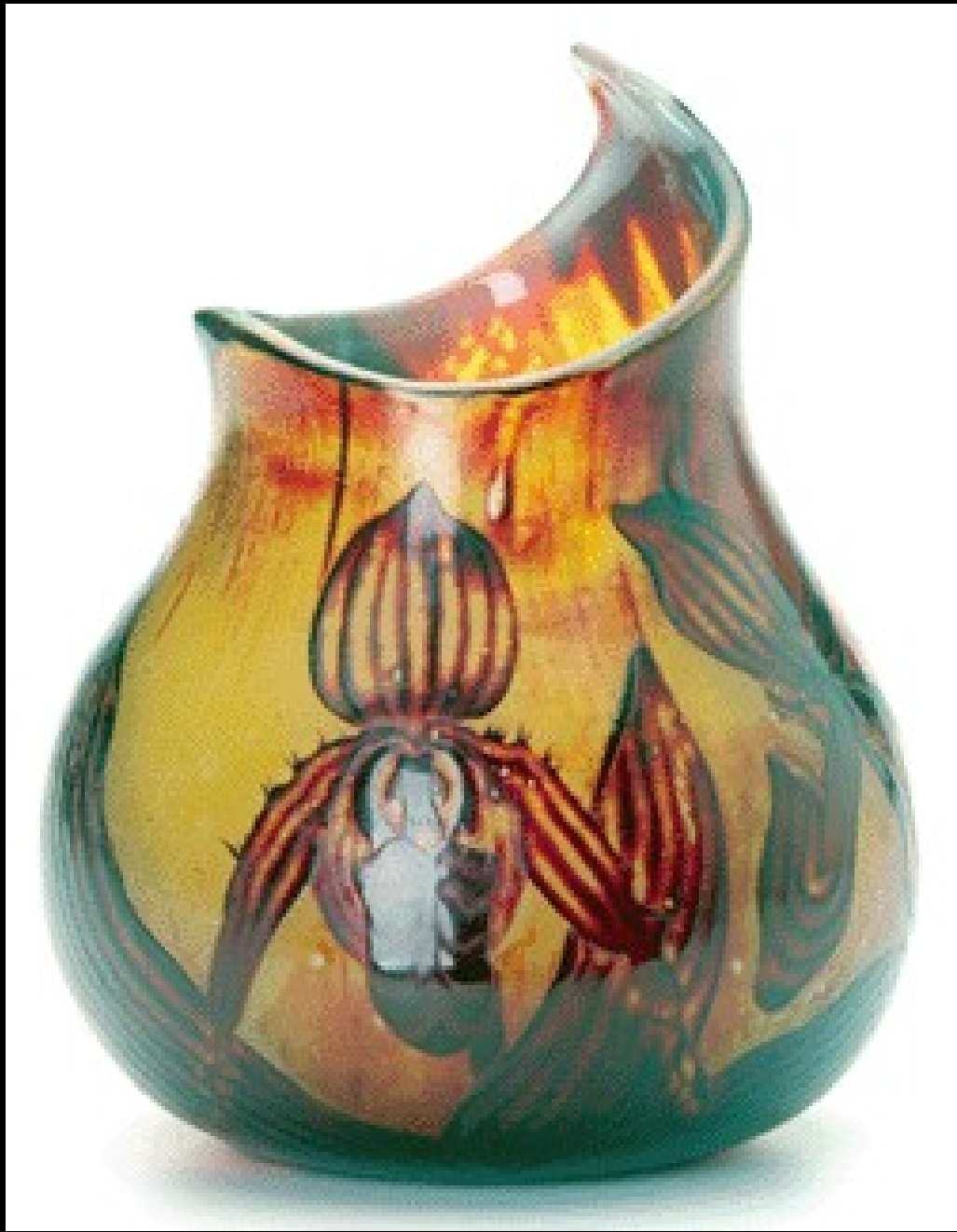












































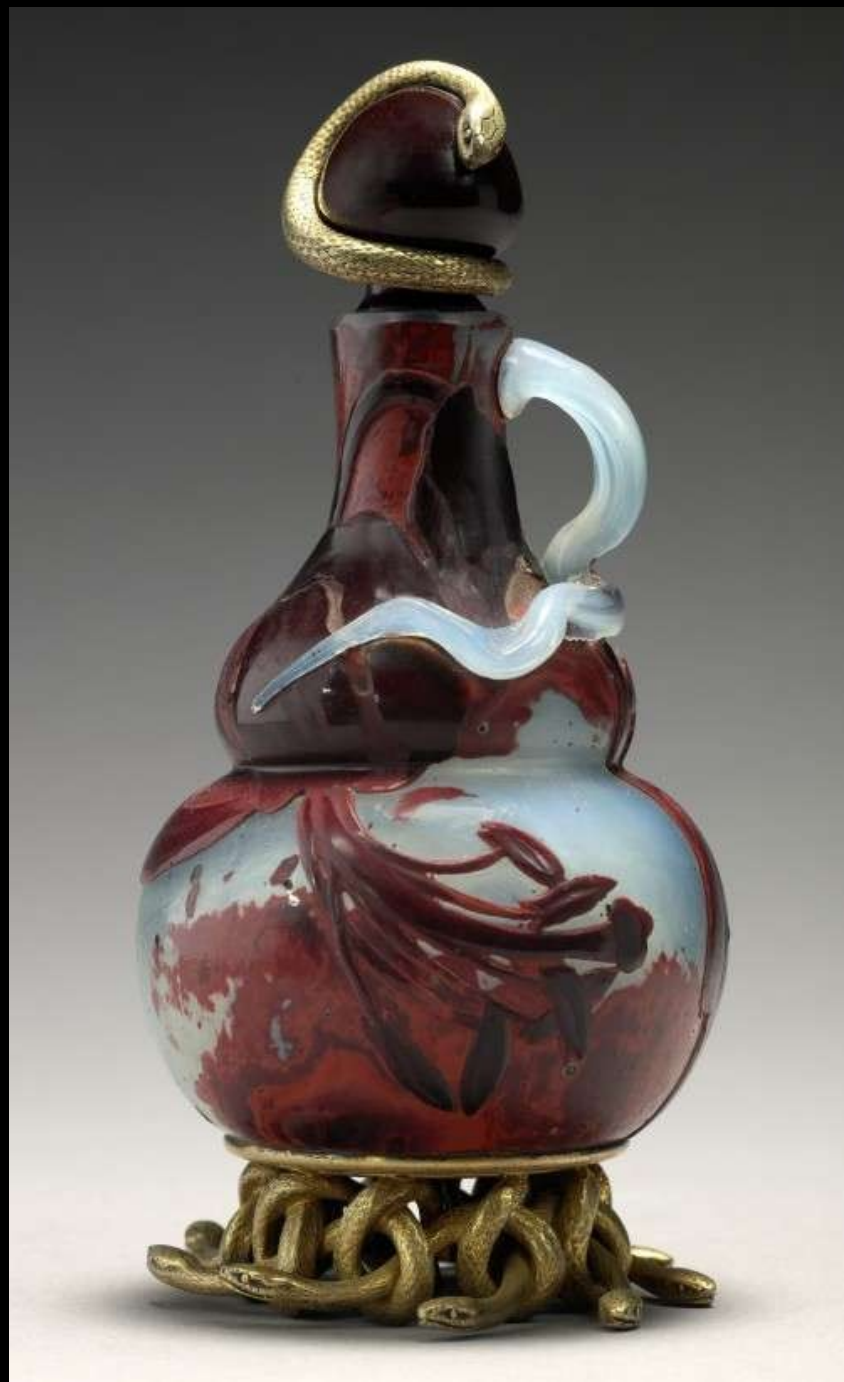














René Lalique



René Lalique, the master of Jewels and Glass
LALIQUE MUSEUM, HAKONE





















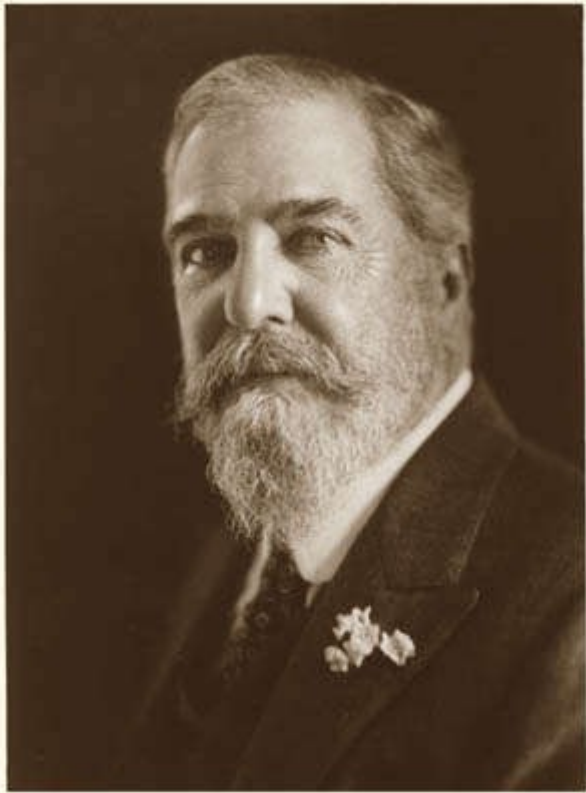












∞ *Louis
Comfort
Tiffany*



