

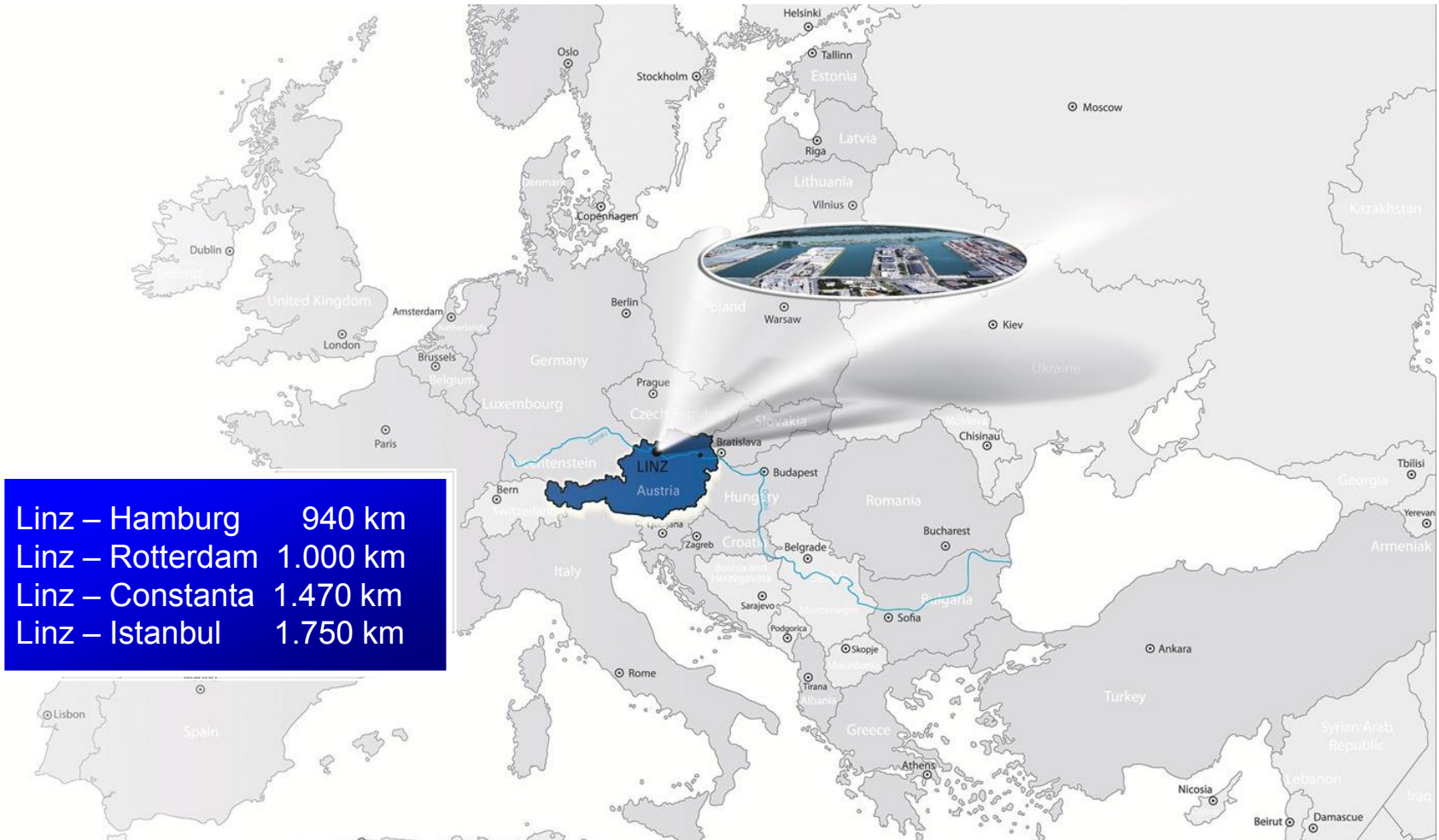


# The future is in the Port of Linz

03.02.2015



# Located in the heart of Europe



# GDP (Gross domestic product) in the region

## ➤ Upper Austrian share of the Austrian GDP

2012	EUR	53.863 mio.	17,0 %
2013	EUR	54.806 mio.	17,0 %

Gross domestic product 2012			
NUTS 3 - Region		mio EUR	%
312	Linz-Wels	26.895	8,48%
314	Steyr-Kirchdorf	6.029	1,90%
313	Mühlviertel	4.693	1,48%
121	Mostviertel-Eisenwurzen	6.909	2,18%
	Catchment area - Linz	44.526	14,04%
	Austria - Total	317.213	100,00%





# Top view – Port of Linz



# Key data 2013/2014

➤ Turnover	33,9 mio EUR
➤ EBT	4,7 mio EUR
➤ Employees (incl. Leasing staff)	~ 175
➤ Investment	11,5 mio EUR
➤ Real estate management	~ 135 ha
➤ Total transshipment	3,032 mio tons
▪ thereof Water transshipment	1,035 mio tons
▪ thereof Land transshipment	1,997 mio tons
➤ Container handling	208.317 TEU
➤ Container trains (without antenna connections)	31 trains/week
➤ Port railway – moved railway cars	104.935 railway cars
➤ Ship landings	1.018 ships
➤ Capacity utilization of warehouses	~ 95 %



# Transport links



# Business segments

- Container terminal
- Trading port and tank farm
- Warehouse logistics
  - deep-freeze and cold storage
  - hazardous goods storage
  - rack and block storage
- Transport logistics
- Port railway
- Real estate

# Container terminal

- Container handling (~ 210.000 TEU/a)
- Container storage (Capacity: 4.500 TEU, GPS supported)
- Container maintenance (check, repair, clean)
- Container transport
- Container stuffing/stripping
- Customs clearance





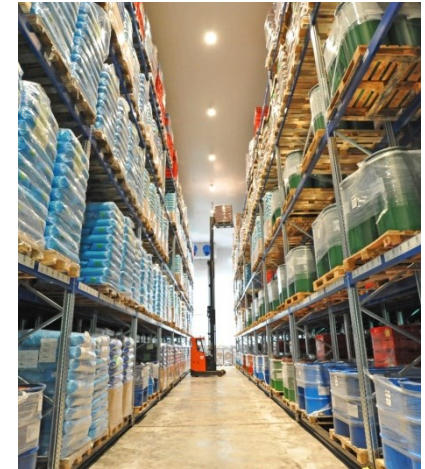
# Trading port & tank farm

- Trading port
  - 3 port basins
  - transshipment of bulk and general cargo
  - weigh-bridge and rail-car scale
  - crane capacity up to 40 tons
- Tank farm
  - 330.000 m<sup>3</sup> fuel depots
  - transshipment through Petroleum industry



# Warehouse logistics

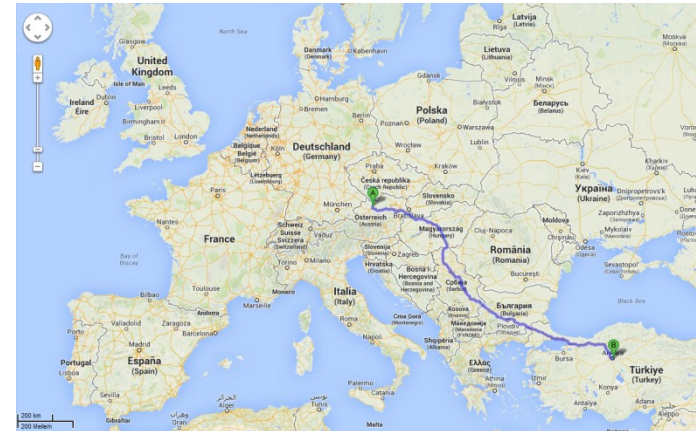
- Deep-freeze and refrigeration warehouses
  - Capacity: ~ **15.400 pallets**
- Hazardous goods warehouses and warehouses for goods with water-polluting substances
  - Capacity: ~ **13.000 pallets**
- Rack and block storage
  - Capacity: ~ **80.000 m<sup>2</sup>**
- Temperature controlled warehouse for hazardous goods





# Transport logistics

- Services throughout Europe
  - Part-load shipments
  - Full-load shipments
- Hazardous goods transport
- Temperature-controlled transports (heat or refrigerated)
- ADR-Equipment
- Track & Trace



# Port railway

- Track length ~ 37 km
- 138 switches
- 19 auxiliary connections to customers (service provider for infrastructure)
- ~ 2,0 mio tons transported goods
- ~ 105.000 moved railway cars





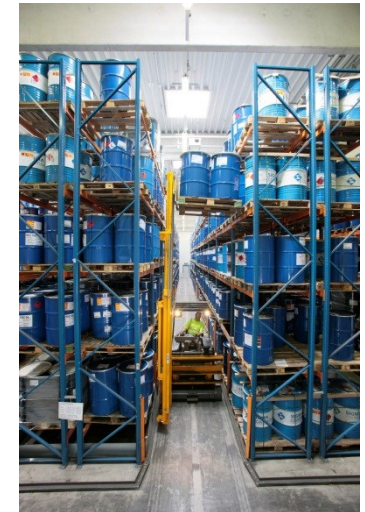
# Real estate

- Real estate management ~ 135 ha
  - thereof **96 ha „land“**
  - thereof **39 ha „water“**
- This is for rent
  - Storage space in warehouses
  - Office-storage combinations
  - Warehouses
  - Offices
  - Parking areas
  - Land



# Individual services

- Order picking
- Sorting
- Repacking
- Labelling
- Assembling
- Stocktaking
- Customs clearance
- Tug boat service by MS Eduard (ice-breaking, excursions)





# Current projects

➤ **Land reclamation with environmental compensation**

Land gain: ~ 62.000 m<sup>2</sup>

Investment: **EUR 10,8 mio**

*finished*

➤ **Extension of the Container terminal**

Handling capacity: ~380.000 TEU/a

Investment: **EUR 20,1 mio**

*finished*

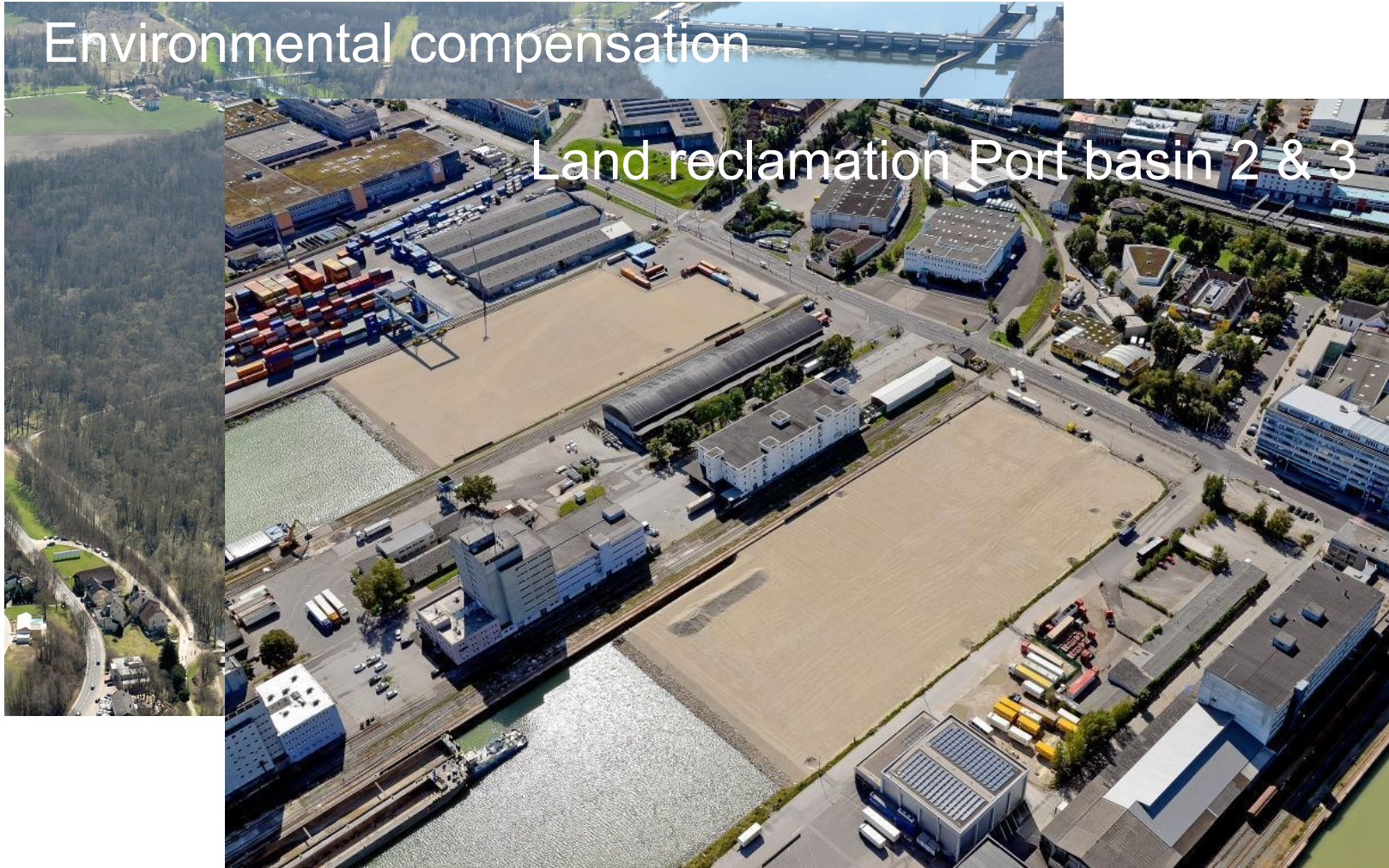
➤ **Implementation of the „Masterplan“**

Project period: 2014 - 2024

Investment: **EUR 273 mio**

*in progress*

# Land reclamation & Environmental compensation





# Extension of the Container terminal



Co-financed by the European Union  
Trans-European Transport Network (TEN-T)

# Masterplan – Port of Linz





# Quality management – Certifications

- ISO 9001:2008
- ISO 14001:2004
- HACCP  
(Hazard Analysis and Critical Control Points)
- Approved „Seveso II Directive“  
warehouse site
- IFS (International Food Standard)
- Austria Bio Garantiee
- SQAS (in implementation)
- AEO (planned)



We can solve your logistics puzzle !!!



[www.hafenlinz.at](http://www.hafenlinz.at) | Always at your service.

**LINZ AG**  
H A F E N



Thank you for you attention !!!



The image features a world map in the background. A central rectangular box with a black border contains the following elements:

- Logos for LINZ AG HAFEN and DUNAULAGER LOGISTICS.
- A large blue arrow pointing downwards from the logos.
- The text "Logistics with a system !!!" in blue.

Below the box, the website address [www.hafenlinz.at](http://www.hafenlinz.at) is displayed in blue. A compass rose is visible in the bottom left corner of the map area.