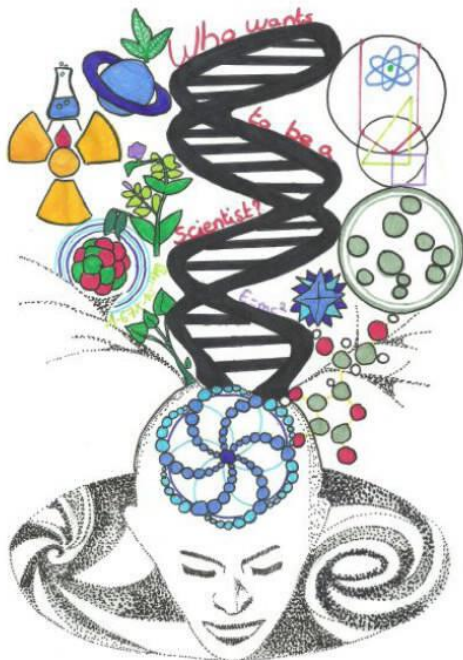
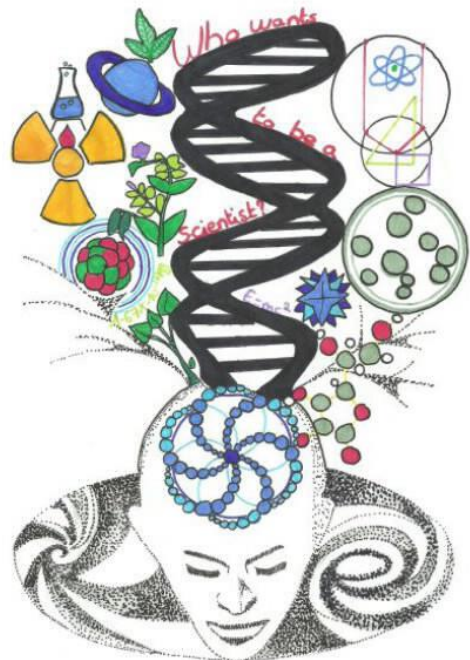


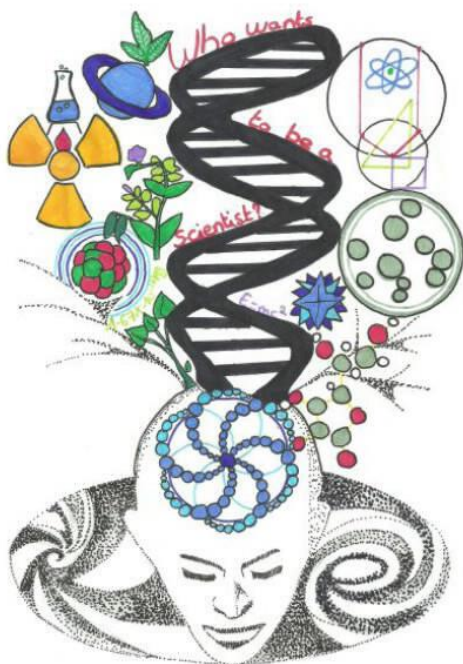
WHO WANTS TO BE A SCIENTIST  
EUROPE



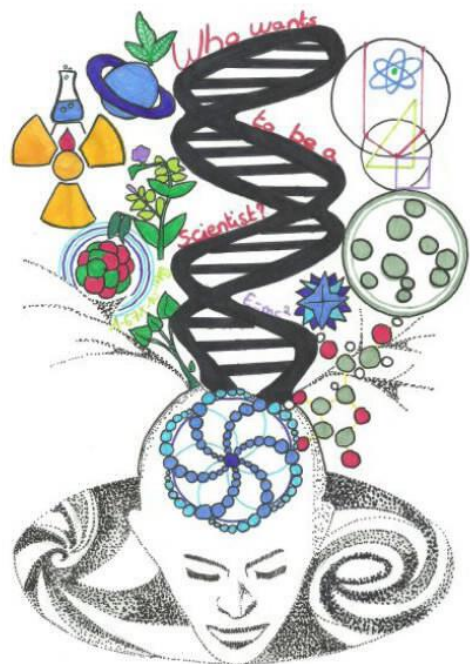
WHO WANTS TO BE A SCIENTIST  
EUROPE



WHO WANTS TO BE A SCIENTIST  
EUROPE



WHO WANTS TO BE A SCIENTIST  
EUROPE



## EUROPE

### QUESTION

Who is the president of France in 2016?

- 1) Manuel Valls
- 2) François Hollande
- 3) Nicolas Sarkozy
- 4) Marine Le Pen

François Hollande

## EUROPE

Who is the Prime Minister of France in 2016?

- 1 ) Manuel Valls
- 2) François Hollande
- 3) Nicolas Sarkozy
- 4) Marine Le Pen

Manuel Valls

## EUROPE

Who sings the song "Allumer le feu"?

1. Claude François
2. Francis Lalanne
3. Johnny Halliday
4. Michael Jackson

Johnny Halliday

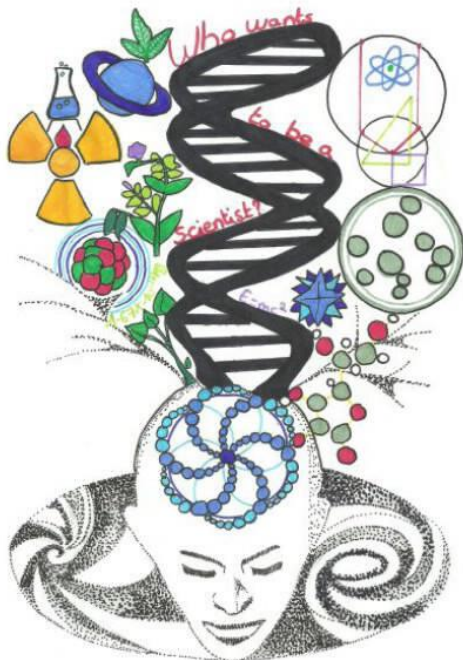
## EUROPE

Who is the main actor of "the Artist"?

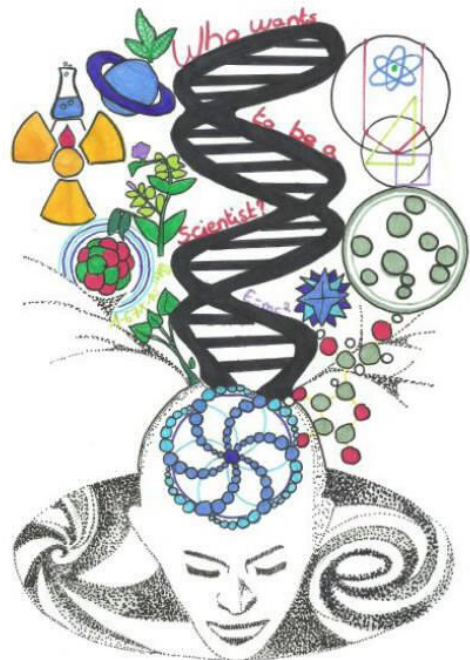
1. Omar Sy
2. Michel Hazanavicius
3. Dany Boon
4. Jean Dujardin

Jean Dujardin

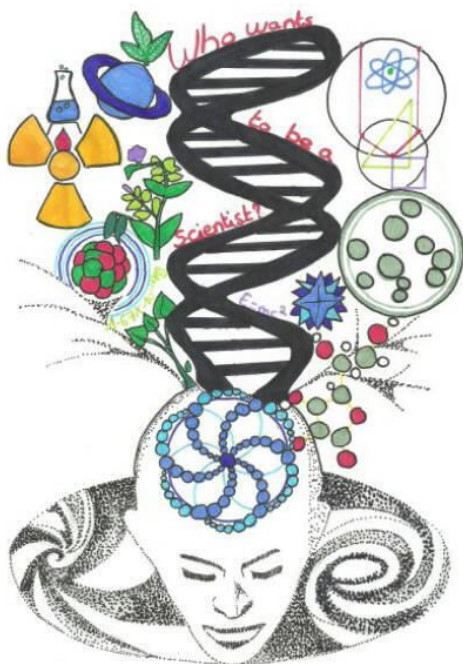
WHO WANTS TO BE A SCIENTIST  
EUROPE



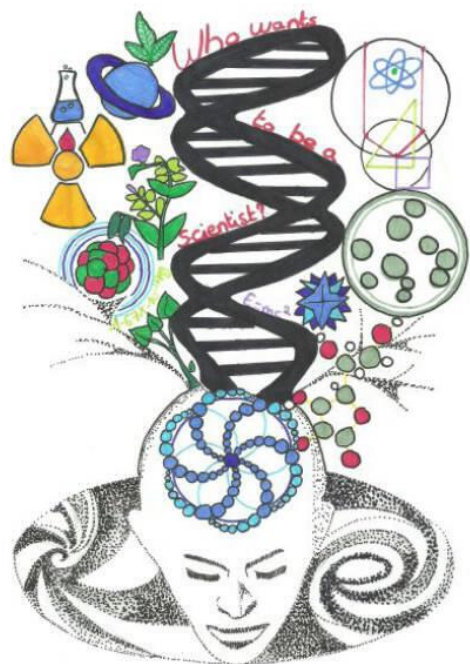
WHO WANTS TO BE A SCIENTIST  
EUROPE



WHO WANTS TO BE A SCIENTIST  
EUROPE



WHO WANTS TO BE A SCIENTIST  
EUROPE



## EUROPE

Who is the actress who played Edith Piaf (a French singer)?

1. Marion Cotillard
2. Mimi Mathy
3. Mélanie Laurent
4. Jennifer Lawrence

Marion Cotillard

## EUROPE

Who is the main actor of "Untouchable"?

1. Francois Cluzet
2. Marion Cotillard
3. Guillaume Canet
4. Romain Faubert

François Cluzet

## EUROPE

What is the river which crosses Paris?

1. The Seine
2. The Rhône
3. The Loire
4. The Rhin

The Seine

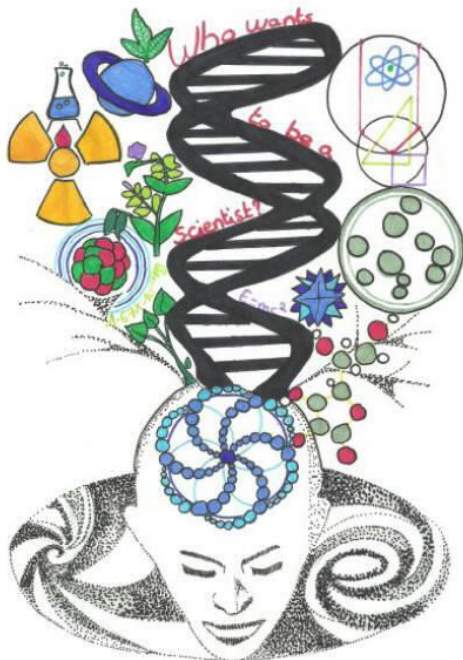
## EUROPE

What is the capital of France ?

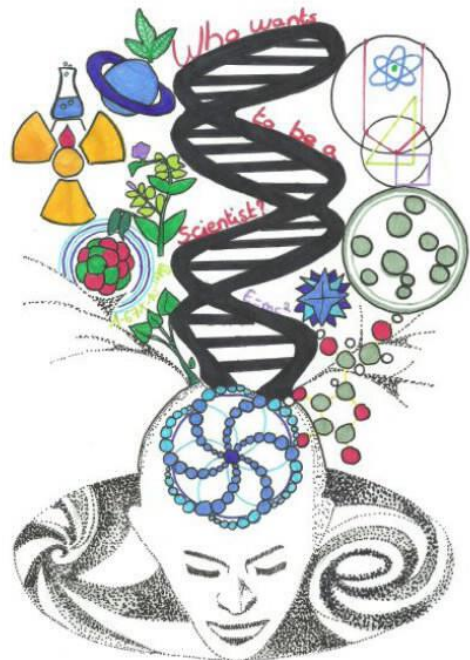
1. Marseille
2. Paris
3. Lyon
4. Bordeaux

Paris

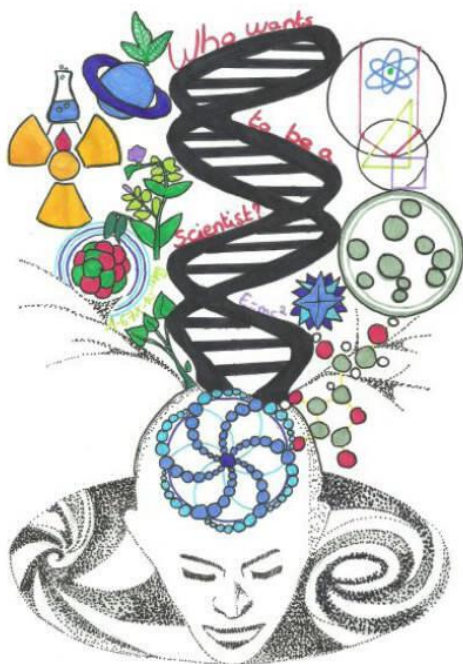
WHO WANTS TO BE A SCIENTIST  
EUROPE



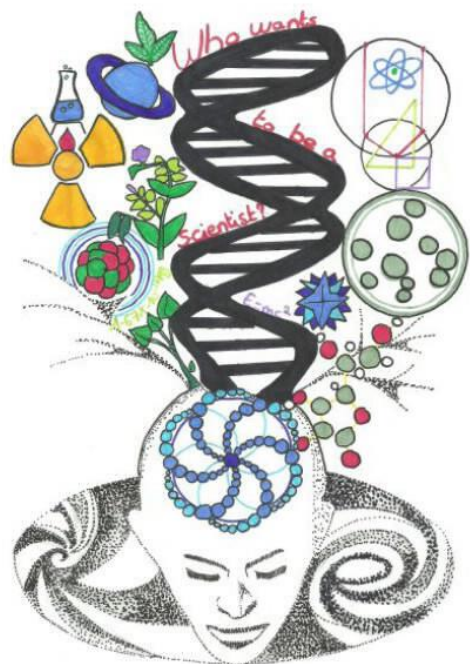
WHO WANTS TO BE A SCIENTIST  
EUROPE



WHO WANTS TO BE A SCIENTIST  
EUROPE



WHO WANTS TO BE A SCIENTIST  
EUROPE



## EUROPE

In which region is Paris?

1. Ile de France
2. Normandy
3. Brittany
4. Aquitaine

Ile de France

## EUROPE

In which region is Nice situated?

1. Aquitaine
2. Ile de France
3. Corsica
4. Provence Alpes Cote d'Azur

Provence Alpes Cote d'Azur

## EUROPE

What specialty is a French one?

1. Hamburger
2. Snails
3. Scrambled eggs
4. Sushi

Snails

## EUROPE

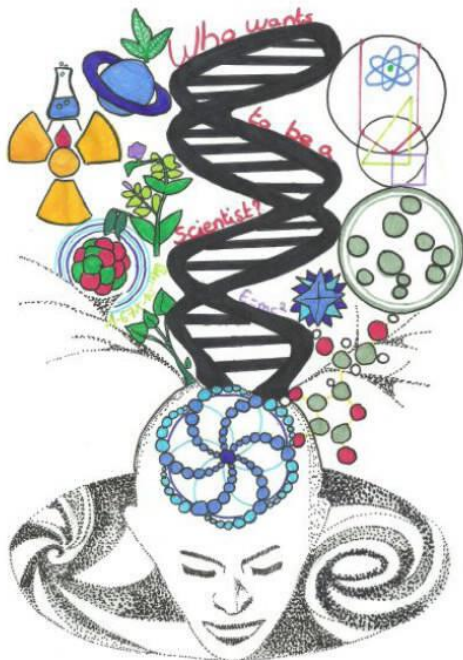
What do French people sometimes eat for breakfast?

1. eggs
2. bacon
3. croissant
4. rice

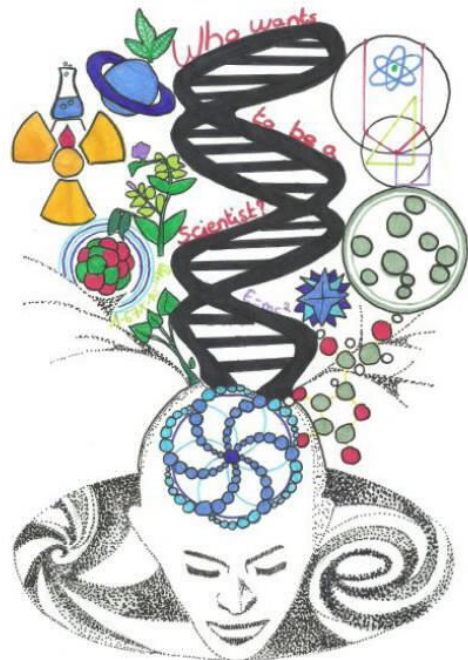
SOLUTION



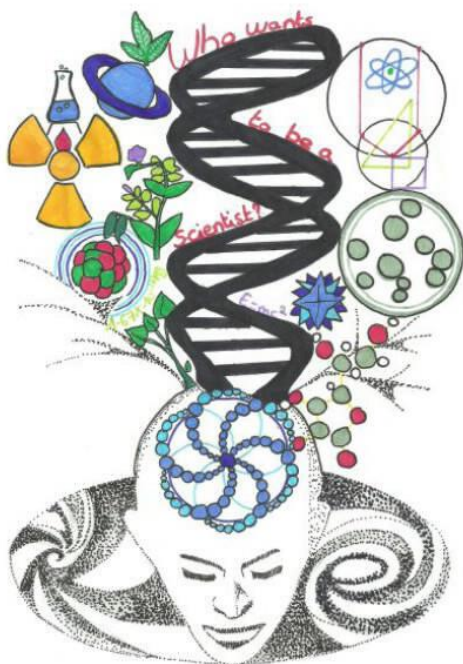
WHO WANTS TO BE A SCIENTIST  
EUROPE



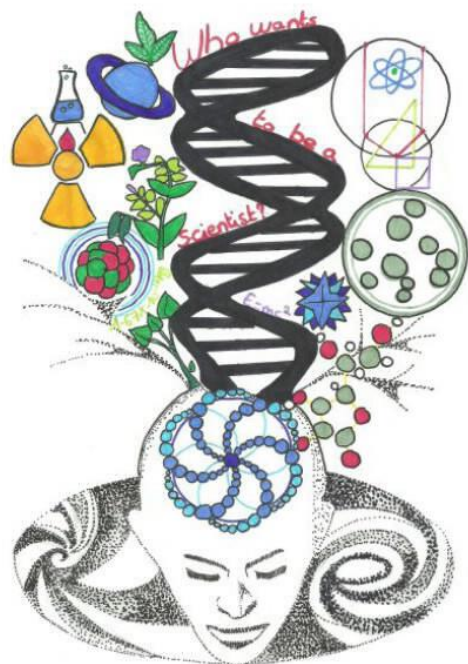
WHO WANTS TO BE A SCIENTIST  
EUROPE



WHO WANTS TO BE A SCIENTIST  
EUROPE



WHO WANTS TO BE A SCIENTIST  
EUROPE



## EUROPE

What is the best French football team?

1. Paris Saint Germain
2. RC lens
3. Racing 92
4. OGC Nice

Paris Saint Germain

## EUROPE

Who is the world champion of judo?

1. Tony Parker
2. Yannick Noah
3. Sébastien Loeb
4. Teddy Rinner

Teddy Rinner

## EUROPE

Who is the French player in Charlotte  
Hornet In NBA ?

1. Tony Parker
2. Rudy Gobert
3. Joffrey Lauvergne
4. Nicolas Batum

Nicolas Batum

## EUROPE

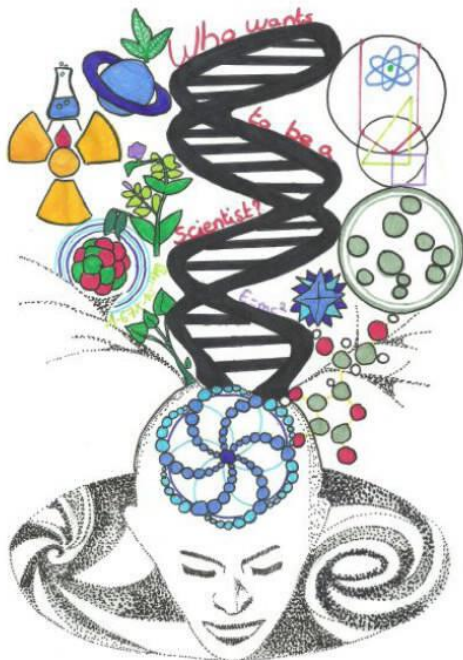
Who is currently (in 2016) the coach of the  
French football team ?

1. Zinédine Zidane
2. Didier Deschamps
3. Laurent Blanc
4. Rudy Garcia

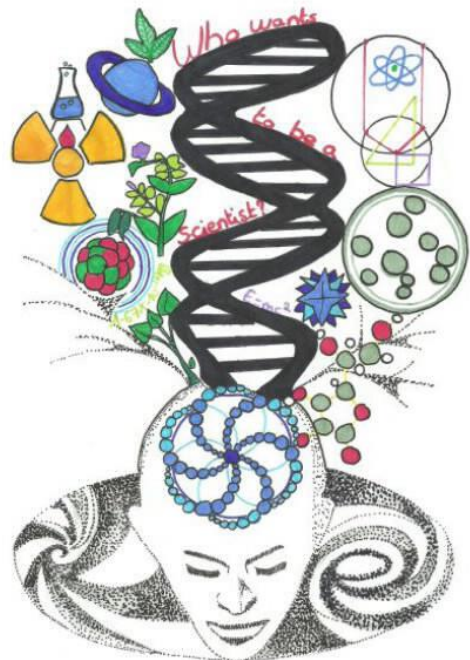
Didier Deschamps



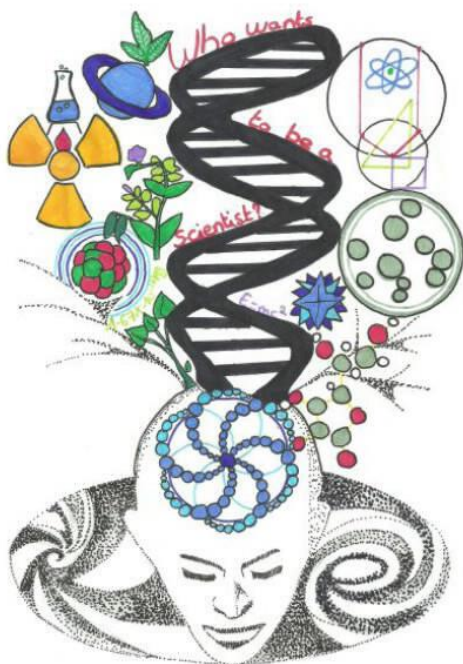
WHO WANTS TO BE A SCIENTIST  
EUROPE



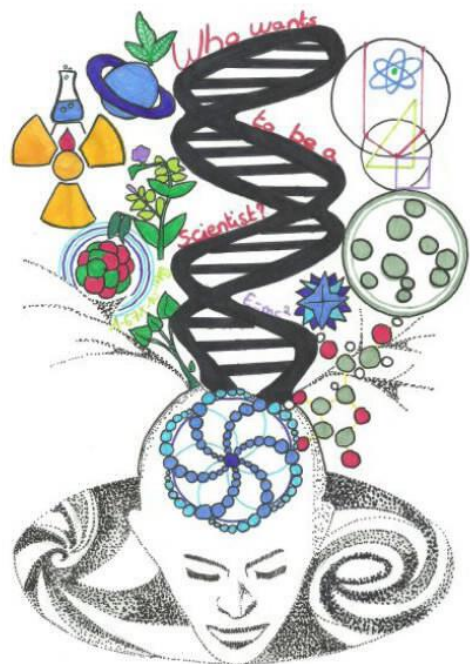
WHO WANTS TO BE A SCIENTIST  
EUROPE



WHO WANTS TO BE A SCIENTIST  
EUROPE



WHO WANTS TO BE A SCIENTIST  
EUROPE



## EUROPE

What's Louis XIV's nickname?

1. the Divine King
2. the King of Heaven
3. the Sun King
4. Louis the Great

The Sun King

## EUROPE

When was the French revolution?

1. 1657
2. 1789
3. 1799
4. 1817

1789

## EUROPE

Who led the French resistance from London during the Second World War?

1. Winston Churchill
2. Staline
3. Charles de Gaulle
4. John Kennedy

Charles de Gaulle

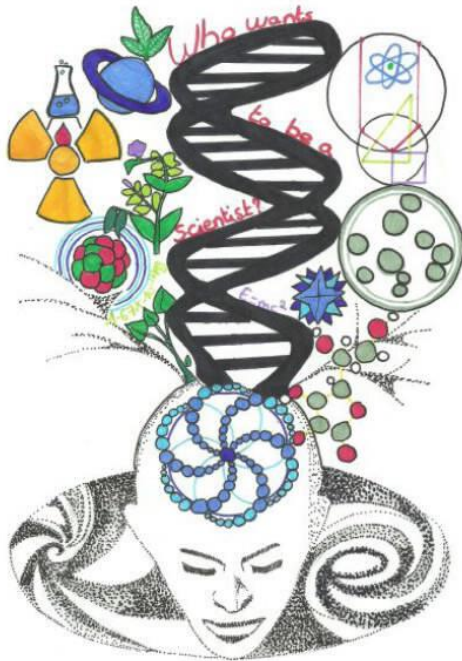
## EUROPE

In which country (other than France) can you hear French speakers ?

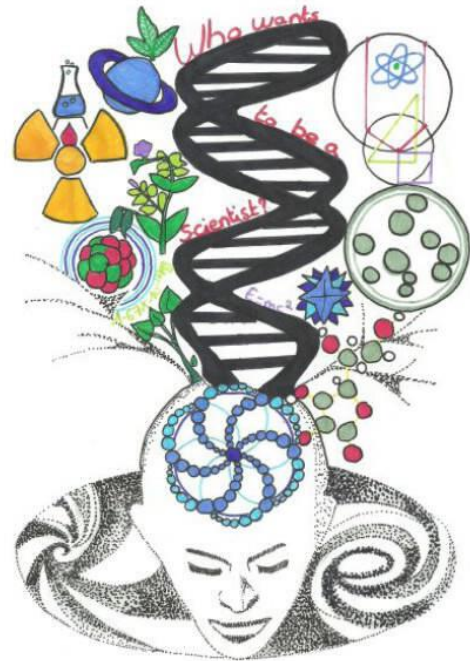
1. Quebec
2. Indonesia
3. Australia
4. Russai

Quebec

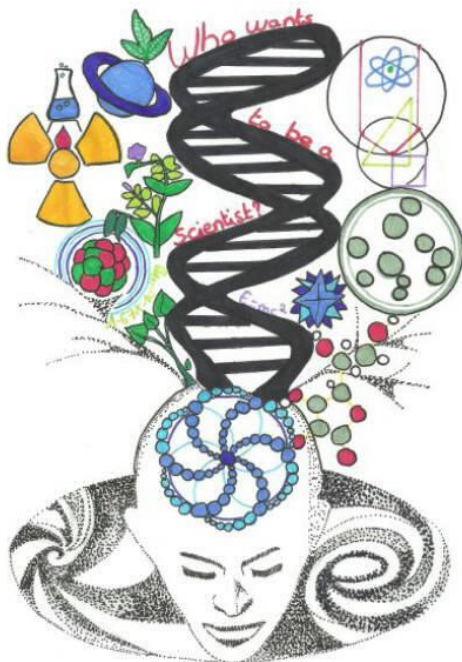
WHO WANTS TO BE A SCIENTIST  
EUROPE



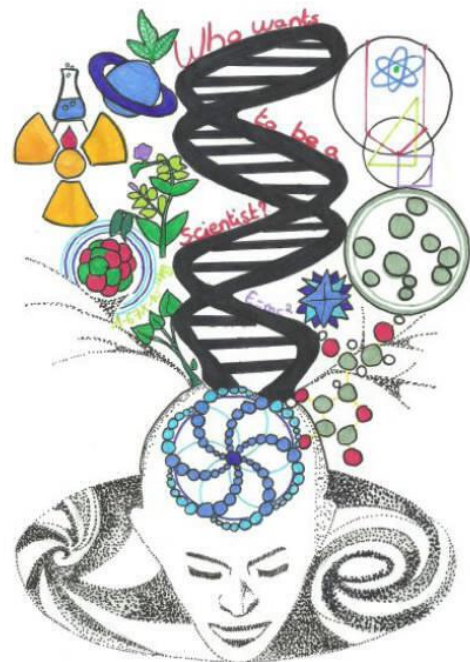
WHO WANTS TO BE A SCIENTIST  
EUROPE



WHO WANTS TO BE A SCIENTIST  
EUROPE



WHO WANTS TO BE A SCIENTIST  
EUROPE



## EUROPE

How many inhabitants live in France in 2016?

1. 66 million
2. 78 million
3. 94 million inhabitants
4. 123 million

66 million

## EUROPE

What is the name of the famous cathedral in Paris?

1. Notre-Dame-De-Paris
2. Notre-Dame-De-Chartre
3. Notre-Dame-De-Reims
4. Saint-Etienne-De-Sens

Notre-Dame-De-Paris

## EUROPE

What monument is located at the top of the Avenue des Champs-Élysées?

1. The Arc de Triomphe
2. The Eiffel Tower
3. The Louvres
4. The Luxembourg Palace

The Arc de Triomphe

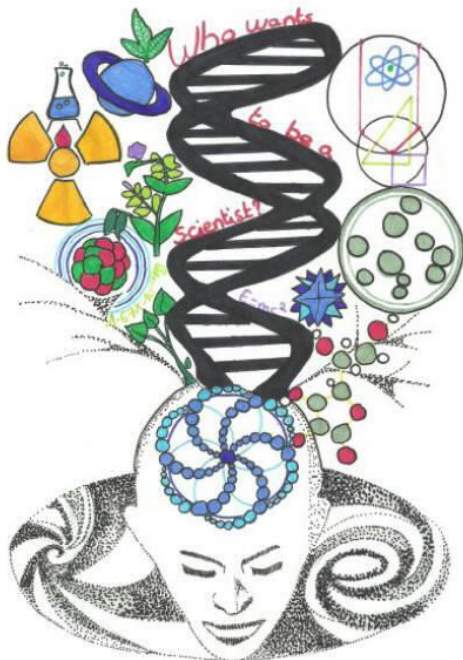
## EUROPE

Where does the French president live?

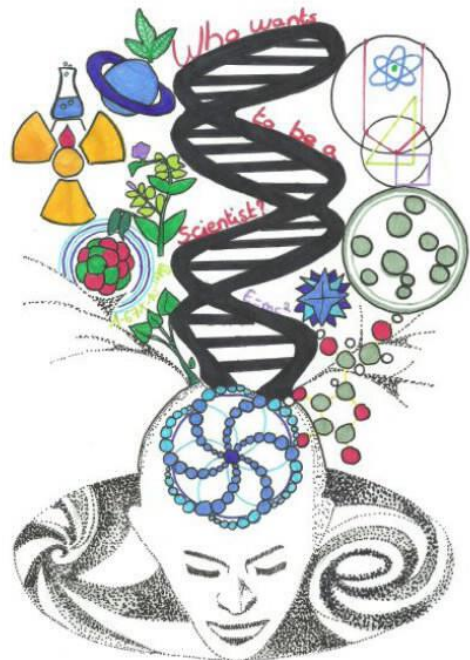
1. White house
2. The Palais de l' Elysée
3. The louvre
4. The Eiffel tower

The Palais de l' Elysée

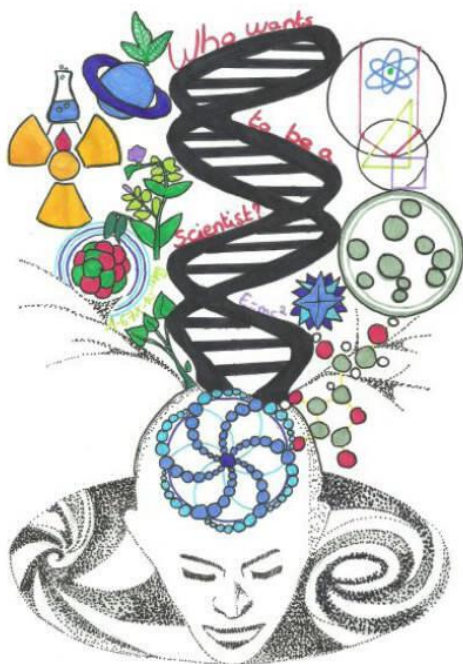
WHO WANTS TO BE A SCIENTIST  
EUROPE



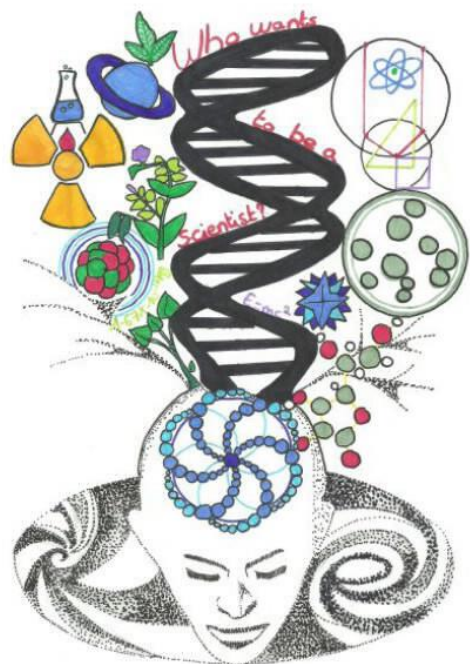
WHO WANTS TO BE A SCIENTIST  
EUROPE



WHO WANTS TO BE A SCIENTIST  
EUROPE



WHO WANTS TO BE A SCIENTIST  
EUROPE



## EUROPE

What is the famous palace that was built during Louis XIV's reign?

1. The Louvres
2. Versailles
3. The Eiffel Tower
4. Chambord

SOLUTION

## EUROPE

QUESTION

SOLUTION

## EUROPE

QUESTION

SOLUTION

## EUROPE

QUESTION

SOLUTION