

Here you can find 4 example of a previous project :
you can use it as a model !!!

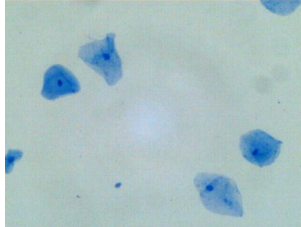
What is the size an epithelial cell ?

20×10^{-4} m

2 μ m

20×10^{-6} m

20 nm



The Mont Blanc is located in :

Spain

France

Austria

Switzerland



100 μ m is equal to...

0,01 m

1 mm

10^{-4} m

10 000 nm



Yersinia pestis is a :

a virus

an algae

a fungus (mushroom)

bacterium

