





First part of the survey

<u>TYPE of WASTE</u> <u>WHERE</u>	<u>ORGANIC</u>	<u>PLASTIC/CANs</u>	<u>PAPER</u>	<u>GLASS</u>	<u>TECHNOLOGY</u> <u>(example)</u>	<u>CLOTHES</u>
HOME					<p>I keep the broken gadgets until I can take them to the school or to the Municipal Collection Point</p>	
SCHOOL					<p>There are some appropriate bins and a recycling company picks them up once a term.</p>	
CITY					<p>There is a Municipal Collection Point far away from my place.</p>	

They propose ideas

<u>TYPES</u> <u>of</u> <u>WASTE</u>						
<u>WHERE</u>	-	-	-	-	-	-

HOME						
------	--	--	--	--	--	--

SCHOOL						
--------	--	--	--	--	--	--

CITY						
------	--	--	--	--	--	--



Results of survey

<u>TYPES</u> <u>of</u> <u>WASTE</u> <u>SAMPLE</u> <u>SIZE</u> <u>WHERE</u> <u>HOW</u>	<u>ORGA</u> <u>NIC</u> <u>22</u>	<u>PLASTI</u> <u>C/CANs</u> <u>22</u>	<u>PAPER</u> <u>22</u>	<u>GLASS</u> <u>22</u>	<u>TECHN</u> <u>OLOG</u> <u>Y</u> <u>22</u>	<u>CLOTHES</u> <u>22</u>
HOME ;-) %	100 %	77,27 %	68,18 %	72,73 %	95,45 %	100%
:- (%	0%	22,73 %	31,82 %	27,27 %	4,55 %	0%
SCHOO L ;-) %	90,9 0%	45,45 %	54,55 %	31,82 %	81,82 %	4,55%
:- (%	9,09 %	54,55 %	45,45 %	68,18 %	18,18 %	95,45 %
CITY ;-) %	100 %	81,82 %	86,36 %	81,82 %	100 %	100%
:- (%	0%	18,18 %	13,64 %	18,18 %	0%	0%



Organic Plastic Paper Glass Technology Clothes

Our ideas

TYPE of WASTE SAMPLE SIZE WHERE HOW	OILS <u>18</u>	BATT ERIES <u>18</u>	BULBS <u>11</u>	MEDICINE <u>S</u> <u>10</u>	BOTTLE TOPS <u>9</u>	SANITARY TOWELS <u>2</u>	FURNITU RE <u>3</u>	MOBILE PHONES <u>6</u>	TOYS <u>3</u>	GLASSE <u>S</u> <u>2</u>
HOME ;-) %	100%	88,89 %	90,91%	90%	87,5%	0%	100%	83,33%	100%	100%
:-(%	0%	11,11 %	9,09%	10%	12,5%	100%	0%	16,67%	0%	0%
SCHOOL ;-) %	83,33 %	66,67 %	64,55%	10%	100%	0%	66,67%	66,67%	0%	100%
:-(%	16,67 %	33,33 %	45,45%	90%	0%	100%	33,33%	33,33%	100%	0%
CITY ;-) %	100%	94,44 %	100%	90%	100%	0%	100%	100%	100%	100%
:-(%	0%	5,56%	0%	10%	0%	100%	0%	0%	0%	0%

More ideas...!!

<u>TYPE of WASTE</u> <u>SAMPLE SIZE</u> <u>WHERE</u> <u>HOW</u>	<u>X-RAYS</u> <u>1</u>	<u>WIPES</u> <u>1</u>	<u>AIR</u> <u>CONDITIONER</u> <u>WATER</u> <u>1</u>	<u>INK</u> <u>CARTRIDGES</u> <u>1</u>	<u>CAR</u> <u>WHEELS</u> <u>1</u>	<u>APPLIANCES</u> <u>1</u>	<u>STEEL</u> <u>1</u>
HOME ;-) %	100%	100%	100%	0%	100%	100%	0%
:- (%	0%	0%	0%	100%	0%	0%	100%
SCHOOL ;-) %	0%	100%	0%	100%	0%	0%	0%
:- (%	100%	0%	100%	0%	100%	100%	100%
CITY ;-) %	100%	100%	0%	100%	100%	100%	100%
:- (%	0%	0%	100%	0%	0%	0%	0%

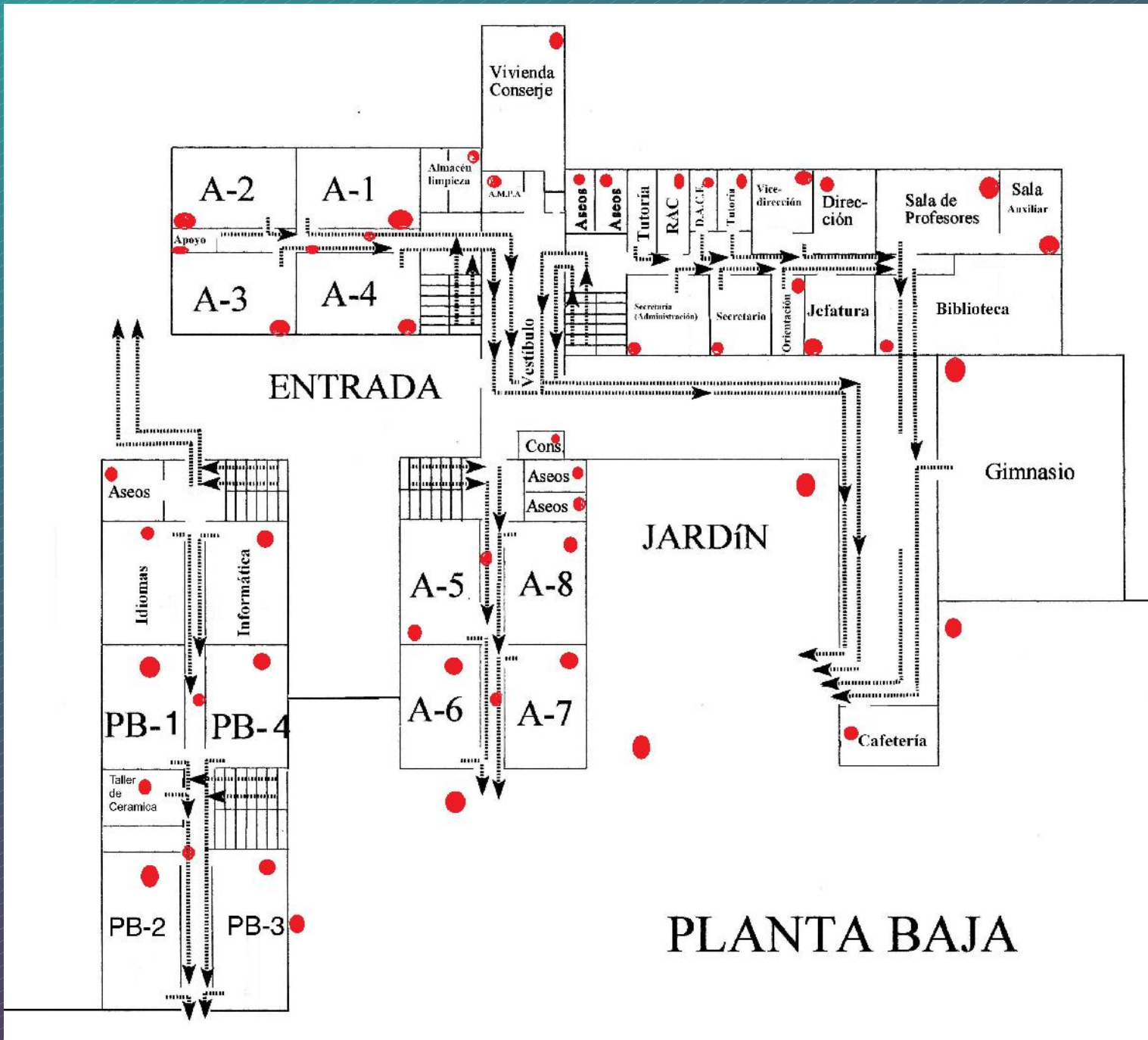
Conclusions of the survey results

HOME	SCHOOL	CITY
<p>We recycle correctly: organic, technology, clothes, oils, batteries, bulbs, medicines, bottles tops, furniture, mobile phones, toys, glasses, x-rays, wipes, air conditioner water, car wheels and appliances.</p> <p>But we should improve about: paper, plastics, cans and glass.</p> <p>We never recycle: steel, sanitary towels and ink cartridges</p>	<p>We recycle correctly: organic, technology, oil, bottle tops, glasses, wipes and ink cartridges.</p> <p>But we should improve about: paper, batteries, bulbs, furniture and mobile phones.</p> <p>We never recycle: plastics and cans, glass, clothes, medicines, sanitary towels, toys, x-rays, air conditioner water, car wheels, appliances and steel.</p>	<p>We recycle correctly: organic, plastics and cans, paper, glass, technology, clothes, oil, batteries, bulbs, medicines, bottle tops, furniture, mobile phones, toys, glasses, x-rays, wipes, ink cartridges, car wheels, appliances and steel.</p> <p>But we should improve about: anything.</p> <p>We never recycle: sanitary towels and air conditioner water.</p>

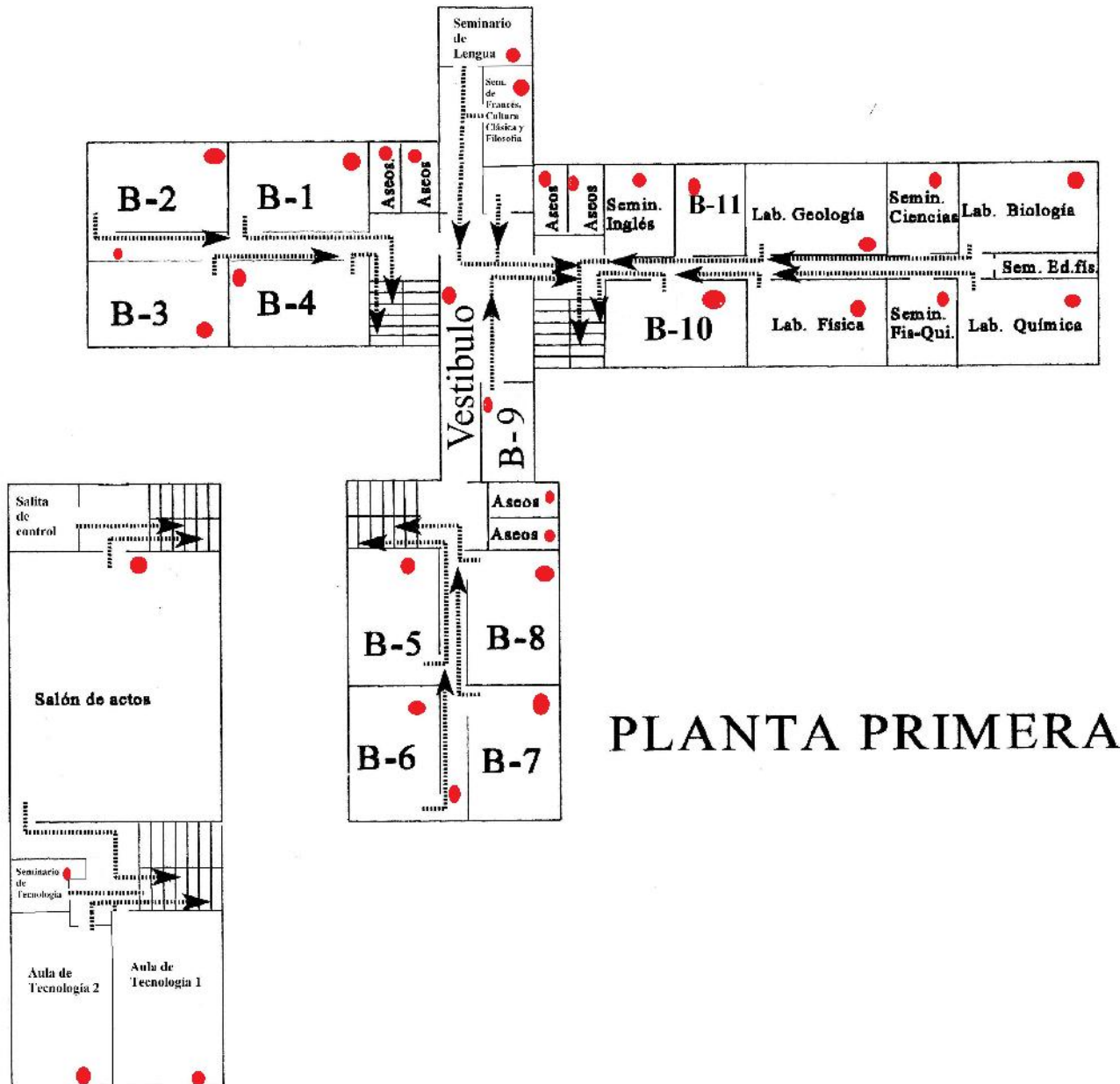
What's up in the school?



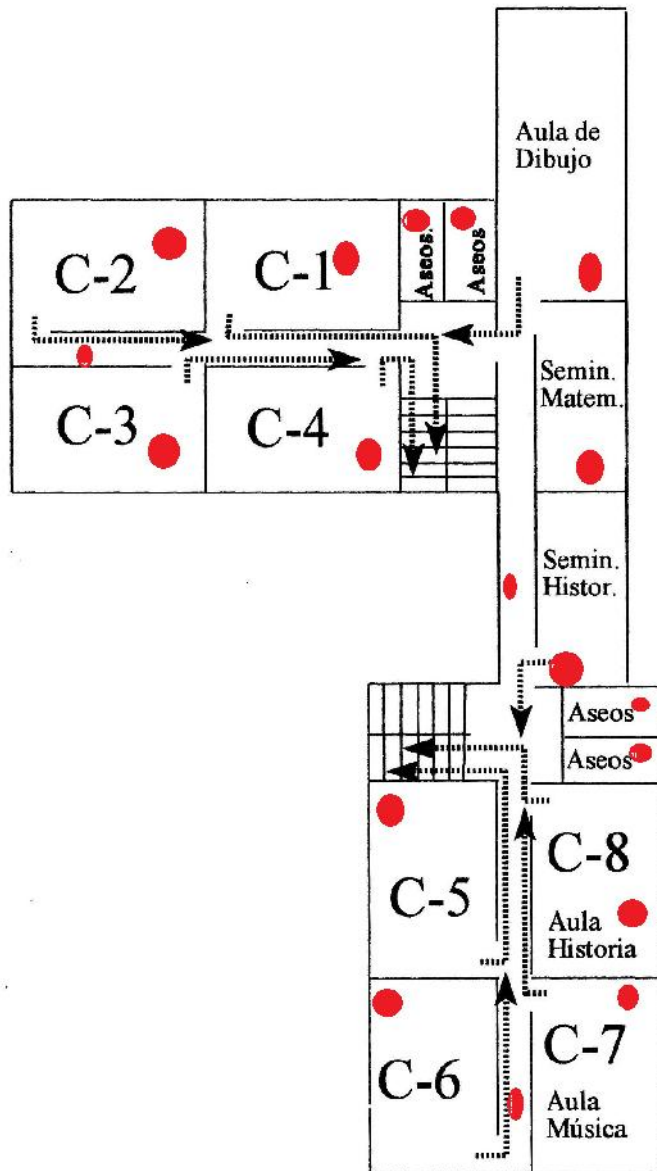
Collection points. Ground floor



Collection points. First floor



Collection points. Second floor



PLANTA SEGUNDA

Some developed projects in the school



Some improvements we need in the school



**LET'S IMPROVE
TOGETHER**