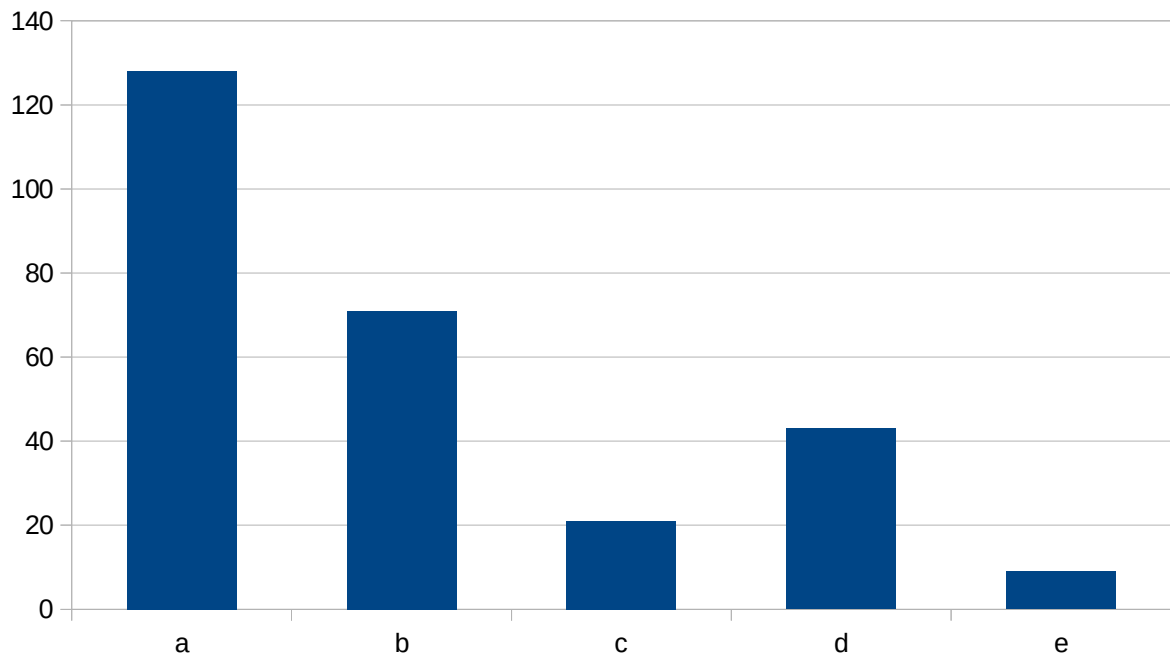


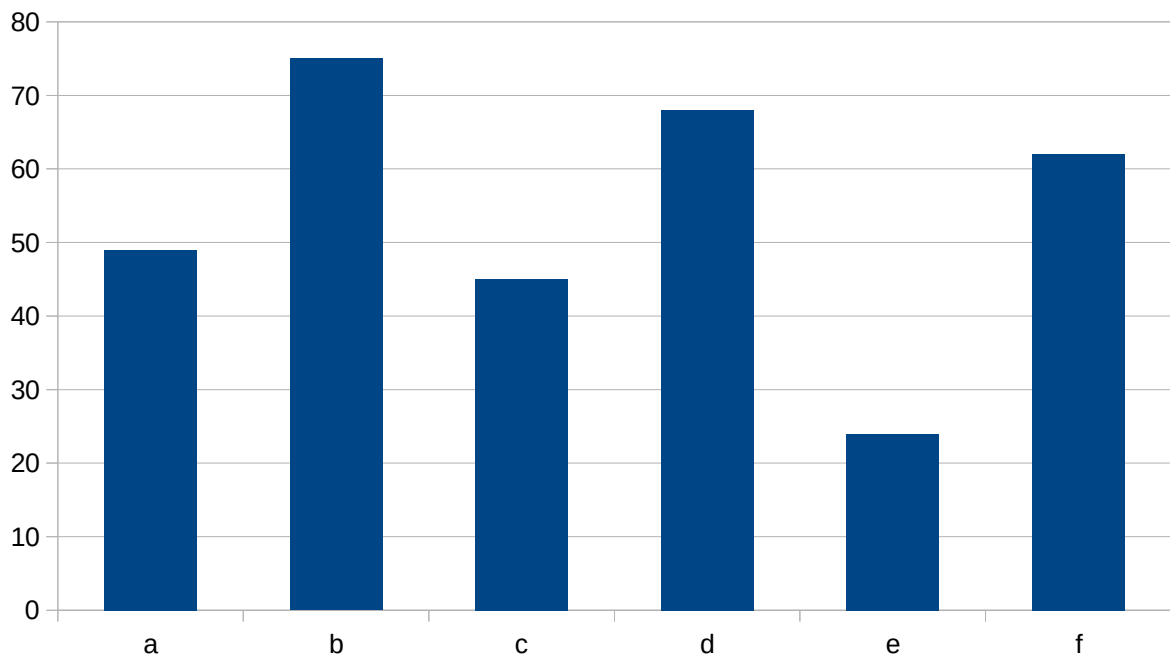
Erasmus+

This project has been funded with support from the European Commission.
This publication [communication] reflects the views only of the author, and the
Commission cannot be held responsible for any use which may be
made of the information contained therein.

1. What kind of waste do you mostly produce at home?
a. organic b. plastic c. glass d. paper e. tin/aluminium



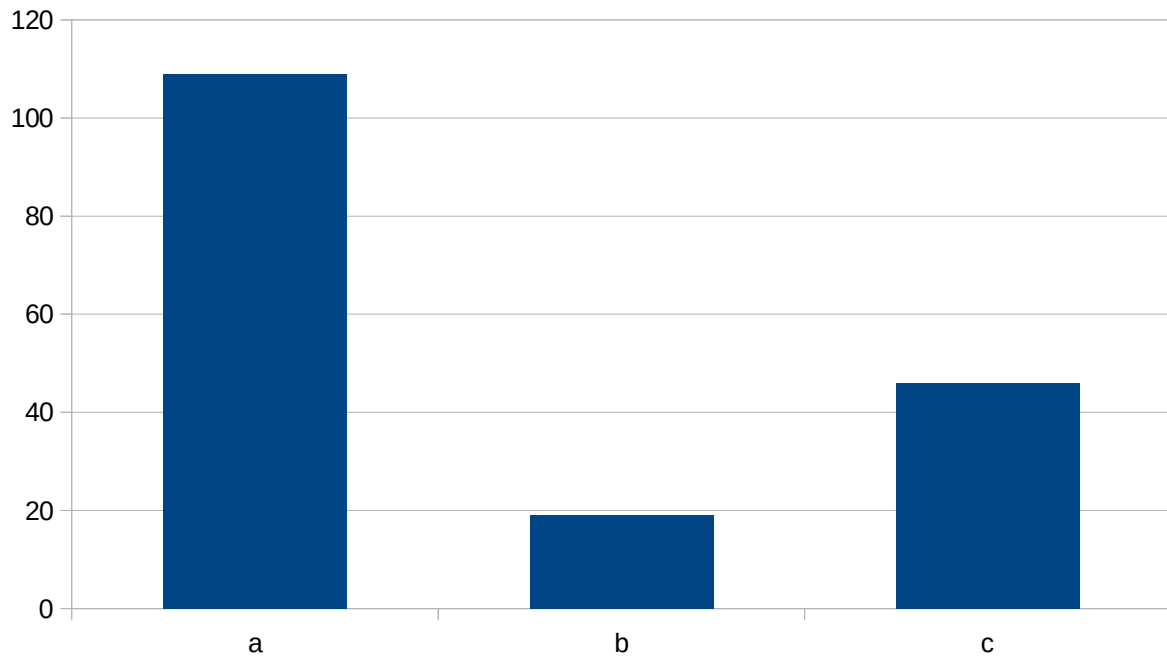
2. What kind of waste do you recycle?
a. organic b. plastic c. glass d. paper e. tin f. no recycling



3. What methods do you use at home?

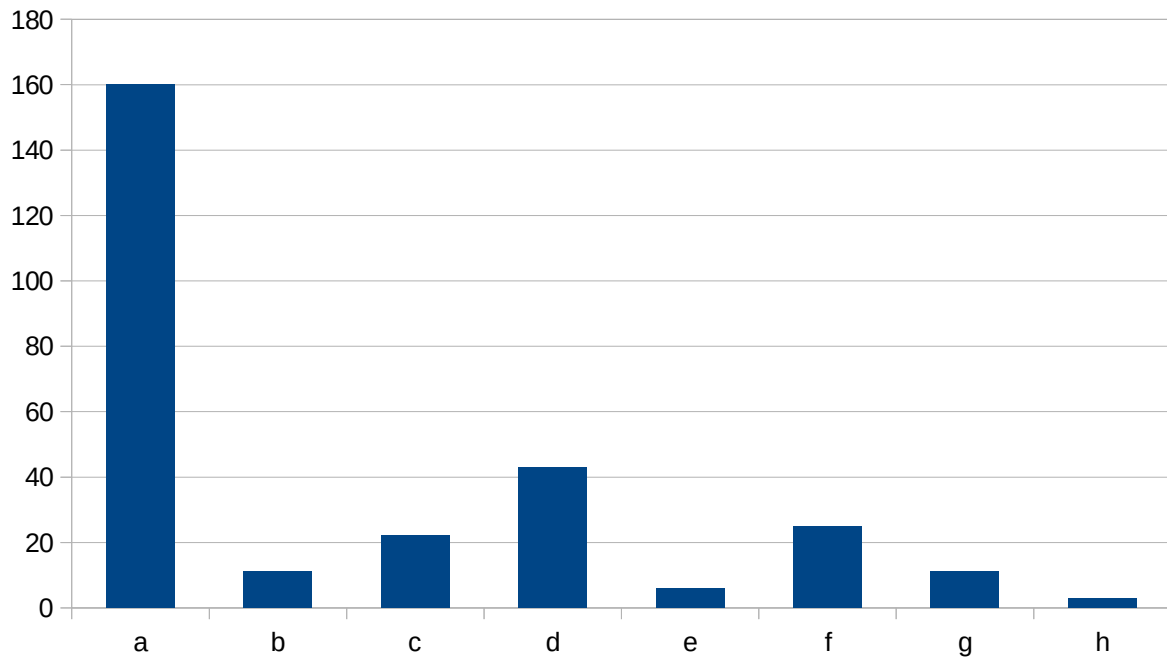
a. collection in separated bins near the house b. in separated bins in ecological village

c. other (specify.....)



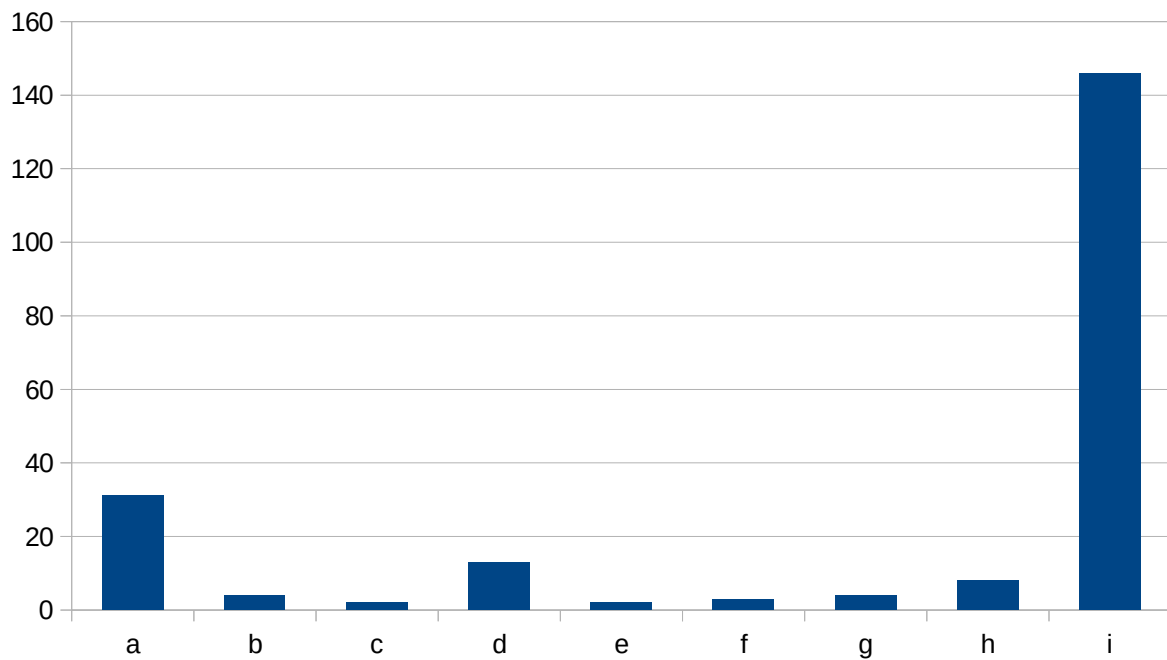
4. What kind of waste does your school produce?

a. paper b. glass c. stationery d. plastic e. tin f. organic g. huge/solid waste h. other (specify..)

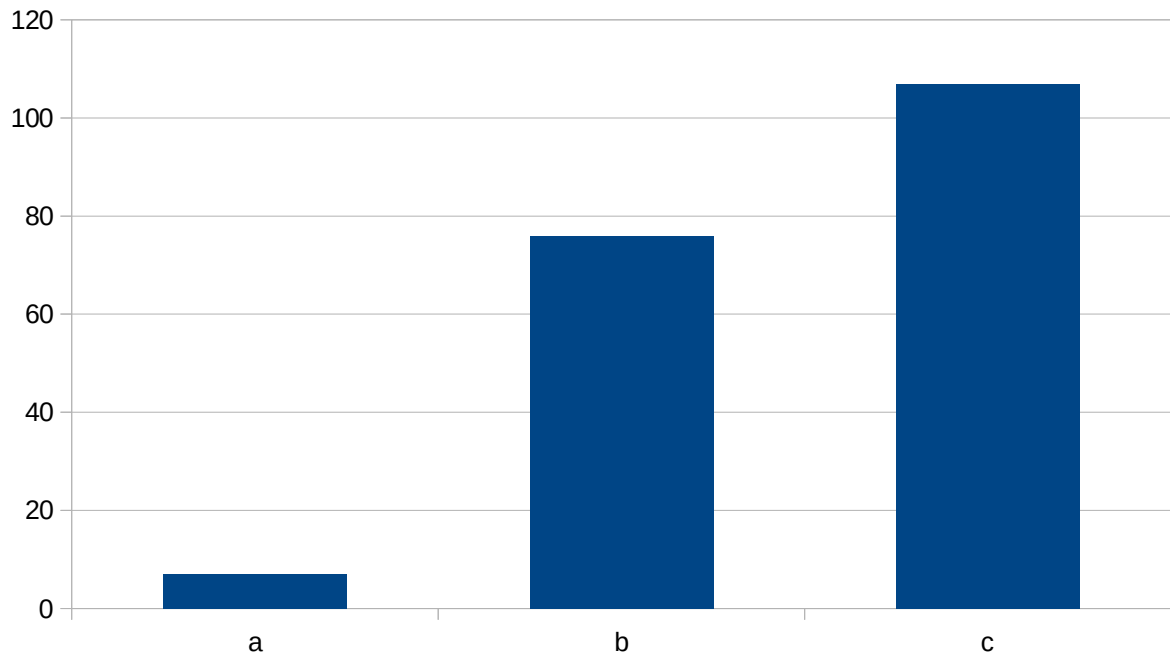


5. What kind of waste does your school recycle?

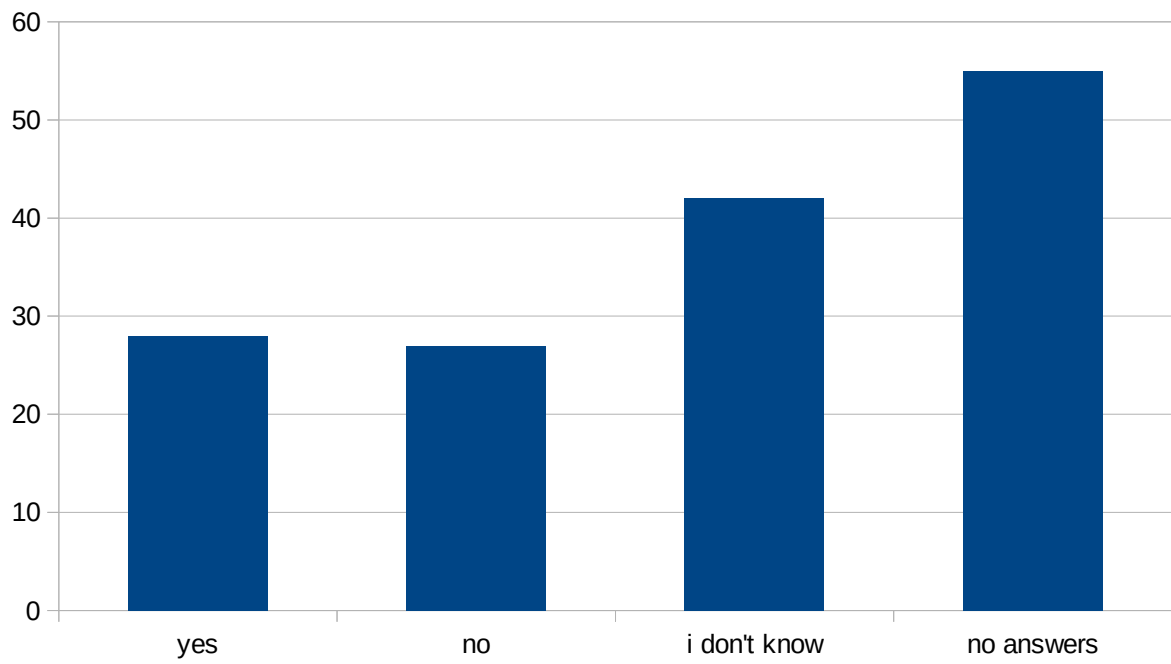
a. paper b. glass c. stationery d. plastic e. tin f. organic g. huge waste h. other (specify.....) i. I don't know



6. Is there a responsible for waste recycling in your school?
a. yes b. no c. I don't know

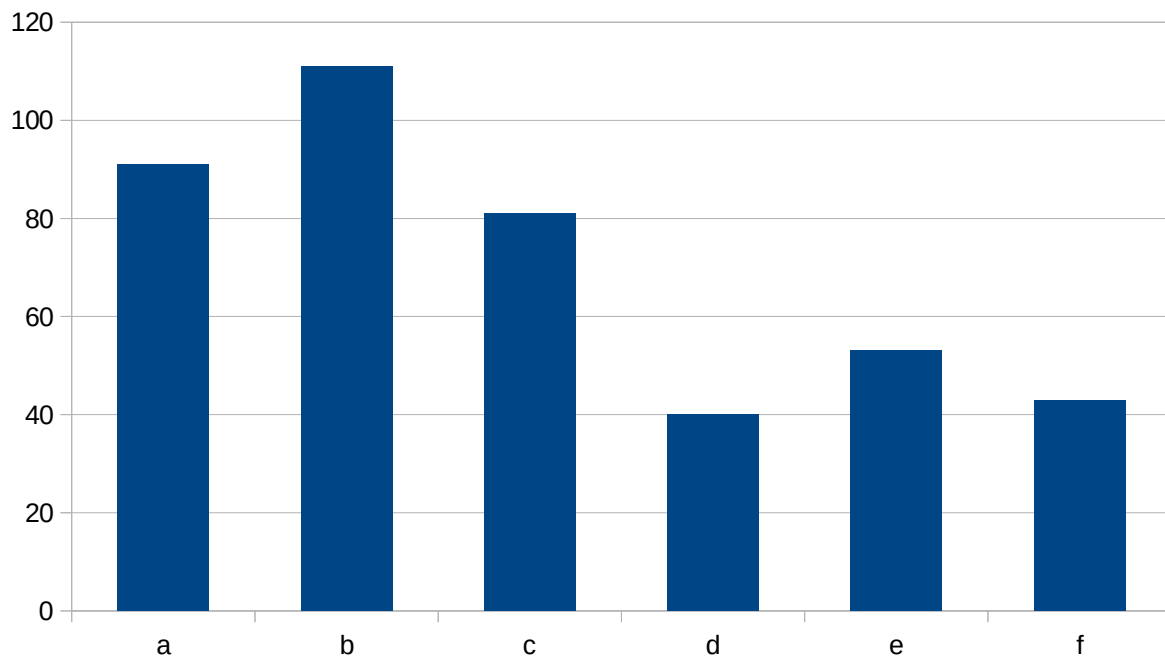


7. Does your town have a storage bin standardization policy? If so, please briefly outline the policy.



8. What kind of waste products are recycled in your town?

a. paper b. plastic c. glass d. tin e. batteries f. huge waste

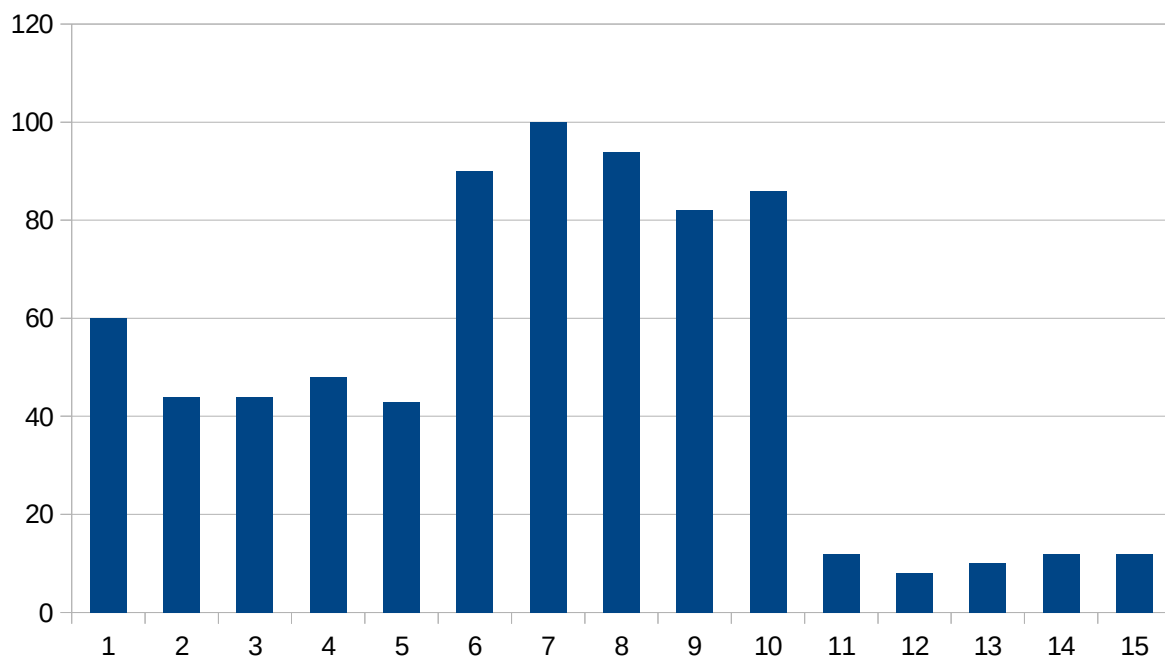


9. In what ways are they recycled?

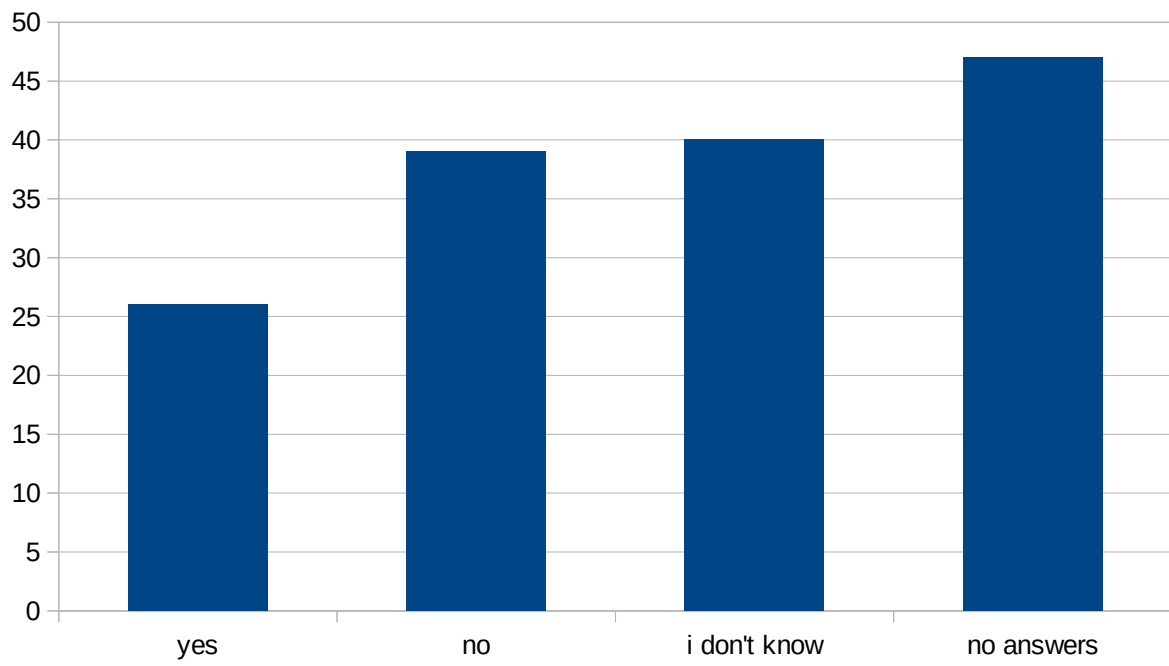
1-5 Individual container (in order: paper, plastic, organic, aluminium, glass)

6-10 Communal container near the house (in order: paper, plastic, organic, aluminium, glass)

11-15 Communal container in ecological village/some areas (in order: paper, plastic, organic, aluminium, glass)



10. Do you know any other recycling methods ? If yes say which one.



11. In what way is solid huge waste recycled?

