



**Welcome to  
Finland,  
Tampere and  
Lyseon lukio!**

# Tampereen lyseon lukio

1884 -



# Tampereen lyseon lukio



- 550 students
- 45 teachers and other staff members



# In RELLU

**General High School**

3 x 115 students

- **European Studies**

3 x 25 students

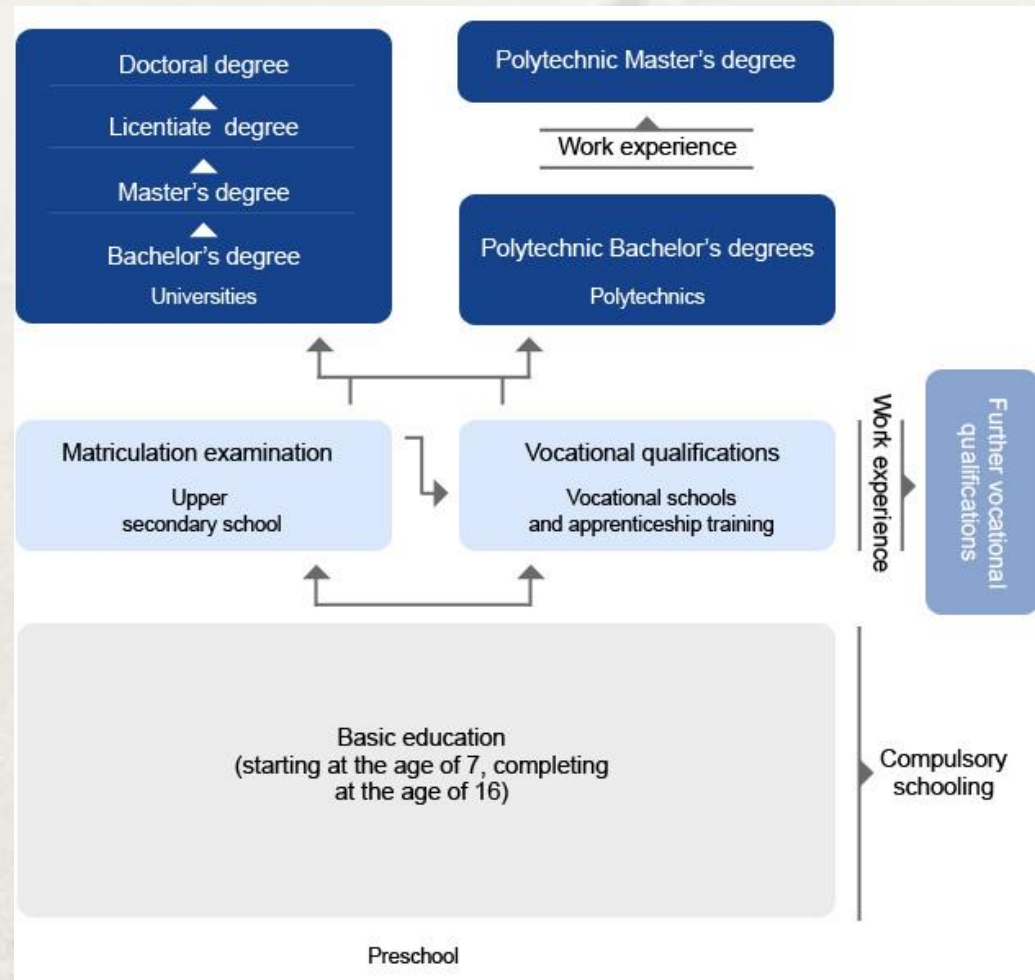
- **IB Programme**

3 x 45 students



# THE FINNISH EDUCATION SYSTEM

[http://www.oph.fi/english/education\\_system](http://www.oph.fi/english/education_system) <http://www.minedu.fi/pisa/?lang=en>



# After comprehensive school

- after basic education
  - 50+ % to general upper secondary education
  - 40+ % to vocational education
  - 3 % to the additional 10th grade
- possibility to combine general and vocational studies
- criteria in applying for an upper secondary school
  - encouraging atmosphere
  - wide range of courses
  - good location
  - high quality ME-results
  - reasonable size
  - interesting areas of specialization
  - friends' choices???
- no districts in applying
- even quality of education



# Students' choices

- **non-graded school**

- offering a range of courses
- provides the opportunity to create a flexible and individual study program
- the opportunity to finish upper secondary school in 2-4 years

- **the study year is divided into five periods**

- each period lasts for about two months
- in every period you will study the subjects you have chosen for three 75 minute lessons a week

- **average 6 (3-8) courses for a certain period**

- twenty 75 minute lessons a week
- at the end of each period there is an exam week, and the students will get a grade for each course they have participated in



# Student welfare

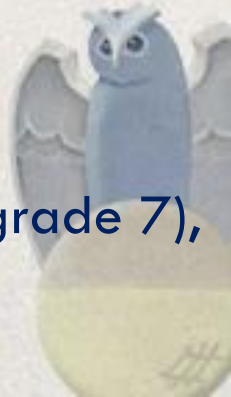
- **careers counsellor**
  - personal careers counselling
  - common study guidance
- **teacher in special needs**
  - testing for reading and writing disabilities
  - courses for students in special needs
  - personal guidance
  - shared with four secondary schools
- **school welfare officer**  
shared with four secondary schools
- **psychologist**  
shared with four secondary schools
- **nurse**





# In Tampere

- English is the main first foreign language (A1-language)
- possible to choose German, French, Russian or Spanish in the elementary school (A2-language)
- German or French as a second foreign language (B2-language, grade 8)
- German, French, Russian or Spanish as a third foreign language (B3-language, grade 10)
- everyone studies Swedish (B2-language, grade 7), the second official language of Finland



# The Finnish Matriculation Examination



- entitles the candidate to continue his or her studies at university
- the national matriculation examination board is responsible for administering the examination
- the matriculation examination is held twice a year in all Finnish upper secondary schools at the same time
- the examination consists of at least four tests
  - the candidate's mother tongue, is compulsory for all candidates
  - the candidate then chooses three other compulsory tests from among the following four tests:
    - the test in the second national language
    - a foreign language test
    - the mathematics test
    - one test among the general studies tests (sciences and humanities)
- one or more optional tests





**Have an  
interesting week  
in Tampere!**