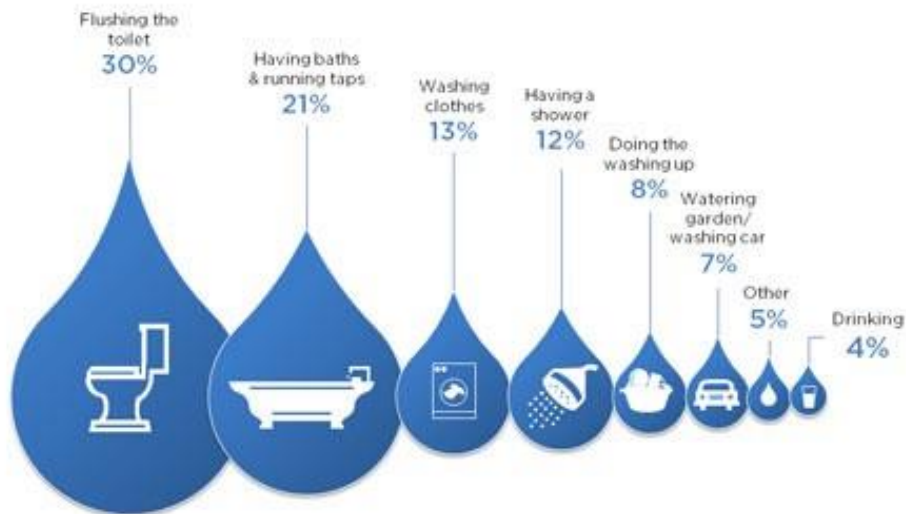


VISITING THE WASTEWATER TREATMENT PLANT

Have you ever thought about what happens to the water when you: take a shower, wash the dishes, do the laundry, flush the toilet? We call this **wastewater**.

Why do you think we have clean water coming out of the faucets in our homes?

Water wastage in the home



Figures sourced from [Waterwise.org.uk](https://www.waterwise.org.uk)

Download: https://miro.medium.com/max/1200/1*ZEc0CFwWFGfanDN-O_ou5A.jpeg

During this visit you will find the latest information on wastewater treatment. There is a special worksheet. Please complete it during your visit.

Have a good time!

The scheme of a sewage treatment plant consists of:

Mechanical cleaning: gratings, sandblasting, primary precipitators.

Biological treatment: sludge reactors with nitrogen and phosphorus removal.

How does a wastewater treatment plant work?

How can we each reduce wastewater?

Purified water is discharged through an underground channel into an open channel and discharged into the Kulpe River. Clean water reaches the Baltic Sea.

How is sewage sludge used?

Did you know that:

- one drop of tap every second drains 0.7 liters of water in one hour;
- the first water sewage facilities were used back in the days of the Pharaohs;
- Crayfish are biological indicators. If there are crayfish in natural waters, the water is clean.