



Co-funded by the
Erasmus+ Programme
of the European Union



ARCHITECTURAL HERITAGE OF POLAND

Zuzanna Powierza

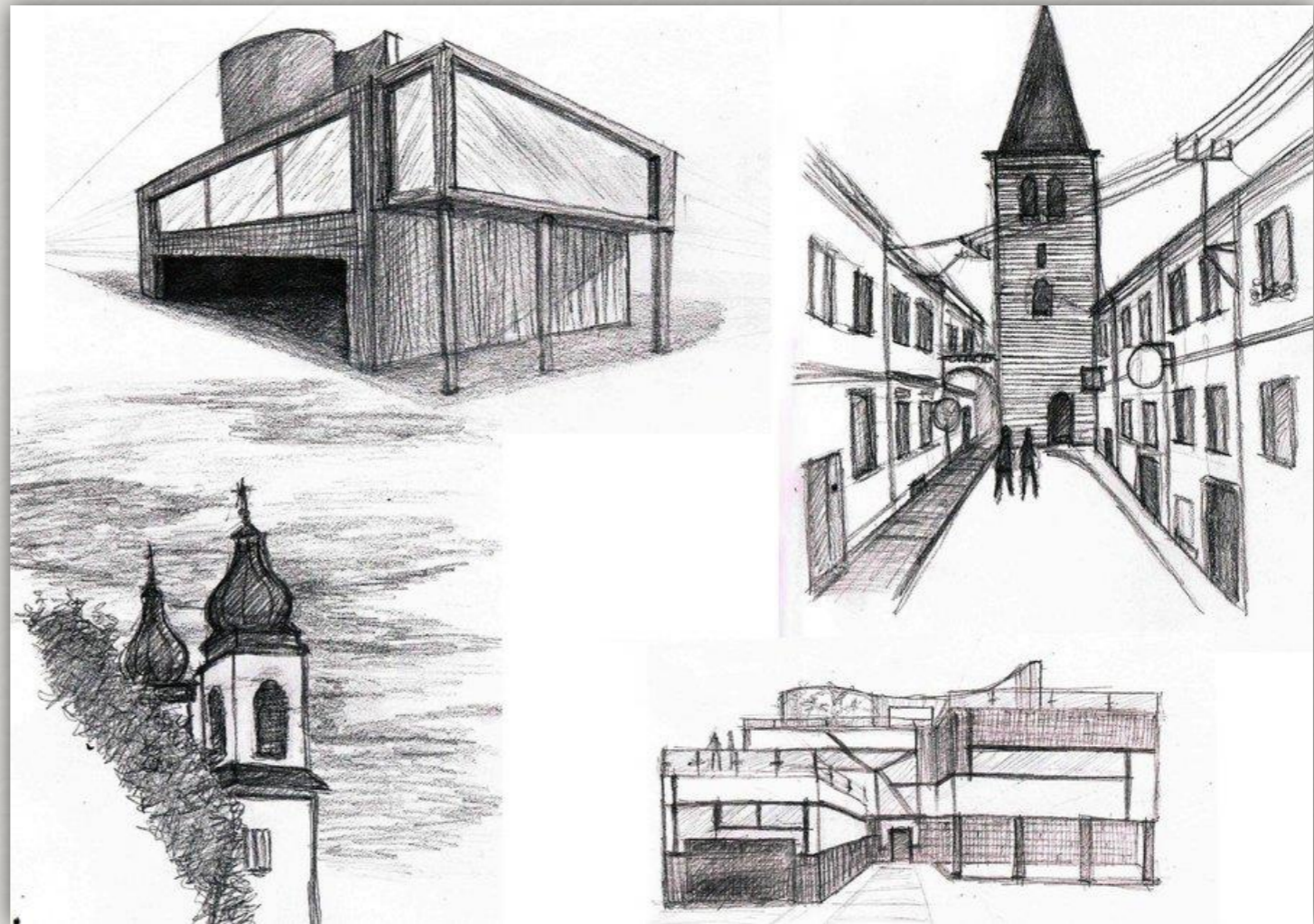
Zofia Domańska



Spain 11th-16th November 2018

Contents

- [Introduction](#)
- [Romansque](#)
- [Gothic](#)
- [Renaissance](#)
- [Baroque](#)
- [Classicism](#)
- [Modernist](#)



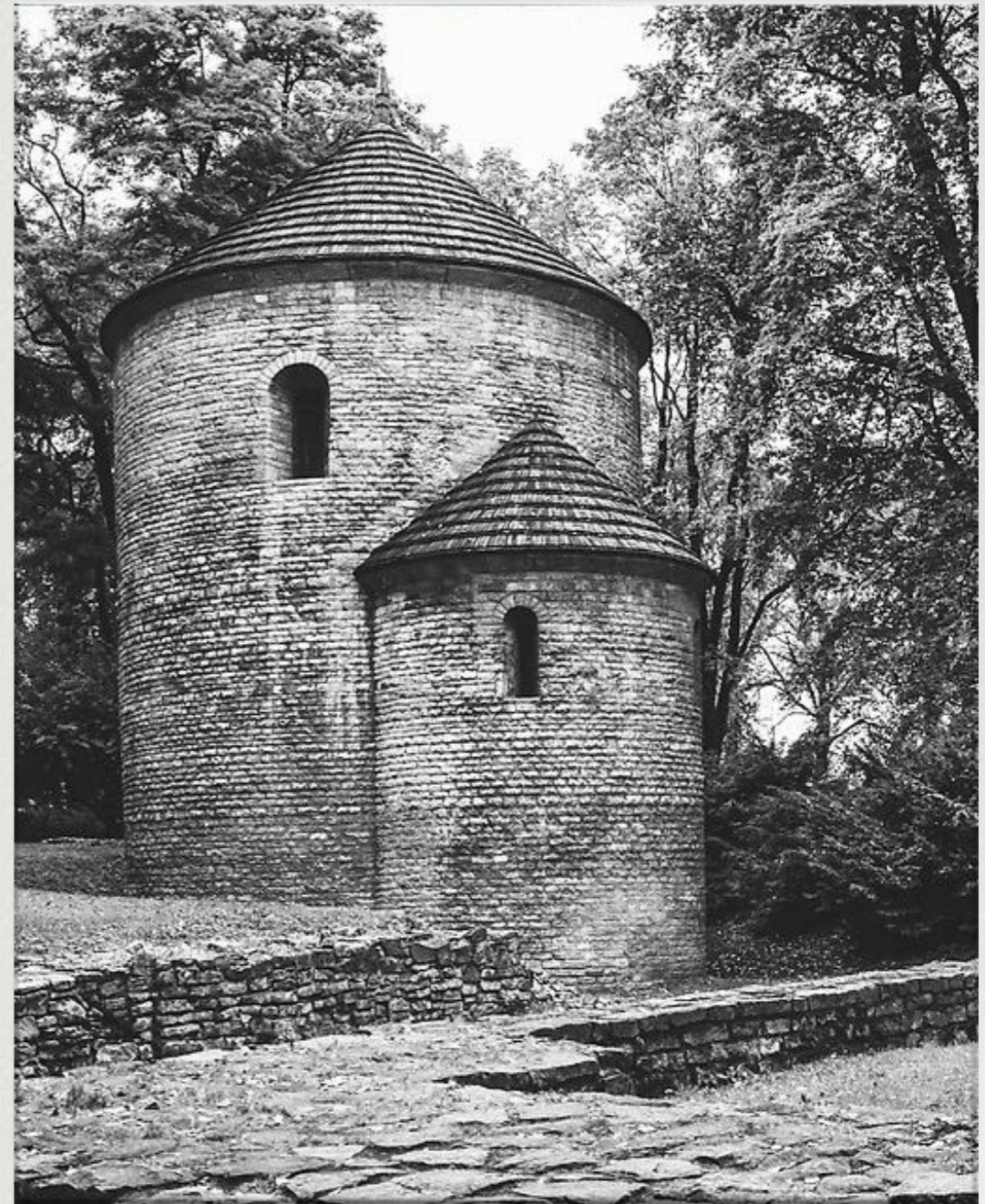
Egyptians have pyramids, Romans have the Colosseum, and the British have Stonehenge. So, what are the oldest monuments in Poland?



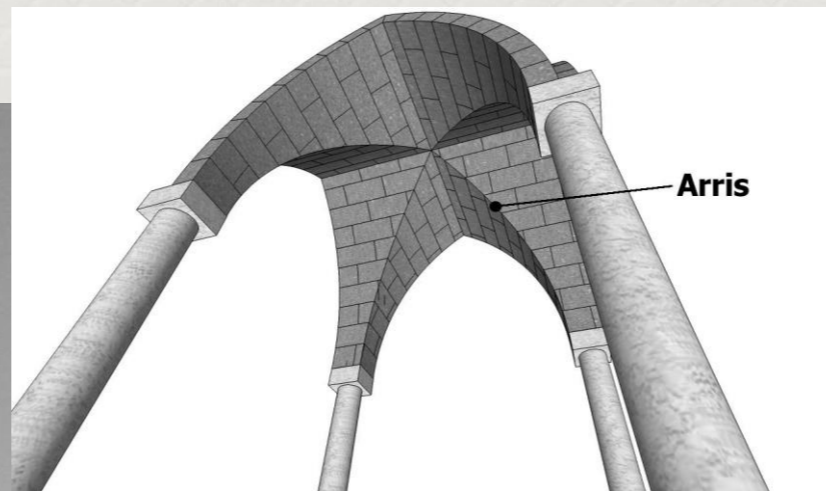
- beginnings of Poland – 10th century AD;
- union of two neighbouring tribes – the Wislanie (Vistulans) near Cracow, and the Polanie, near Poznan;
- Cracow and Poznan – remains of the oldest Polish buildings;

Romanesque architecture

- the 10/11th century;
- very thick walls and round arches;
- mainly castles and churches or cathedrals;



Traits:



- ✦ *Thick walls*
- ✦ *Round arches*
- ✦ *Large towers*
- ✦ *Sturdy piers*
- ✦ *Groin vaults*

The Collegiate church of St. Mary and St. Alexius in Tum

Landmarks:

- ✦ *Saint Nicholas rotunda church, Cieszyn*
- ✦ *Wawel Royal Castle, Cracow*
- ✦ *Tower at the Lublin Castle, Lublin*
- ✦ *Collegiate church, Tum*
- ✦ *St. Peter and Paul Collegiate, Kruszwica*
- ✦ *Imperial Castle, Poznan*

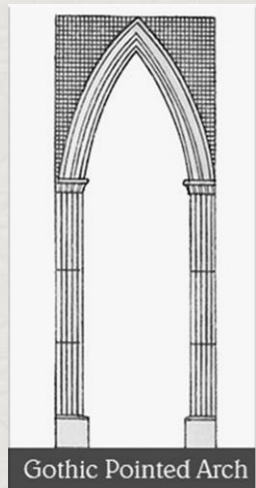


Gothic architecture

- started in 12th century,
- new ideas and constructive elements
- sense of verticality, especially in religious buildings.
- an interpretation of the search for God: the taller building, the closer to heaven and God.



Traits:



Archcathedral Basilica of the Assumption of the Blessed Virgin Mary and St. Andrew, Frombork

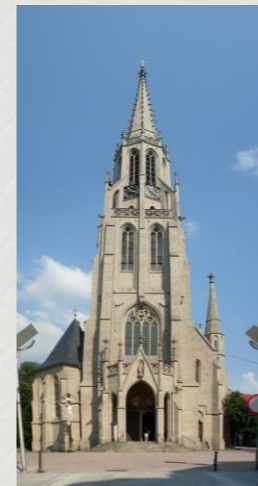
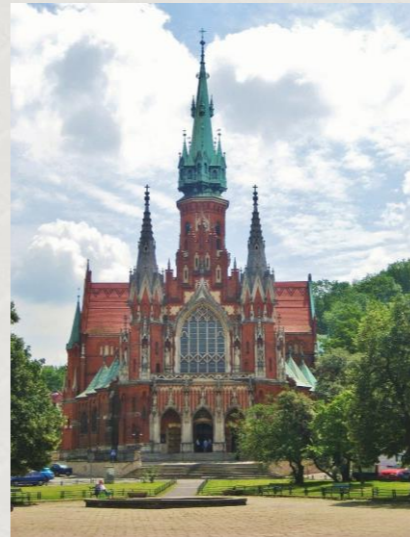
- ✦ *Pointed arch*
- ✦ *Buttresses*
- ✦ *Gable roof*
- ✦ *Brick*
- ✦ *Cross-ribbed vault*

Landmarks

- ✿ *St. Joseph's Church, Cracow*
- ✿ *Old Town Hall, Torun*
- ✿ *St. Mary's Church, Katowice*

- ✿ *Jagiellonian University, Cracow*

- ✿ *Blessed Bronislawa Chapel, Cracow*



Back

Renaissance architecture

- the late 15th century to the late 16th century;
- Golden Age of Polish Culture;
- symmetry, proportion, geometry and the regularity of parts, as in the classical antiquity;



Traits:



- ✿ *Semicircular arches*
- ✿ *Hemispherical domes*
- ✿ *Niches*
- ✿ *Columns*
- ✿ *Pilasters*
- ✿ *Lintels*

Ladmarks

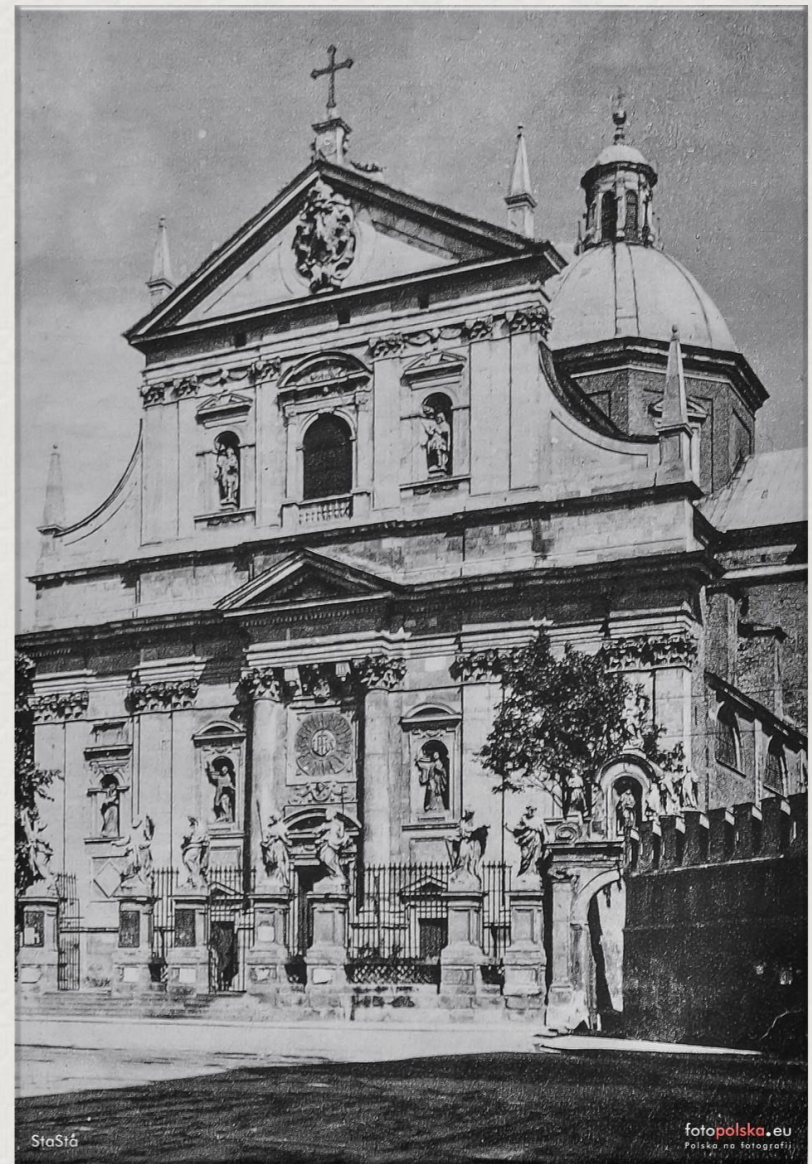
- *The Sigismund Chapel, Cracow*
- *Cloth Hall, Cracow*
- *Town Hall, Poznan*
- *„Armenian Houses”, Zamosc*
- *Old granary, Kazimierz Dolny*
- *Krasiczyn Palace*



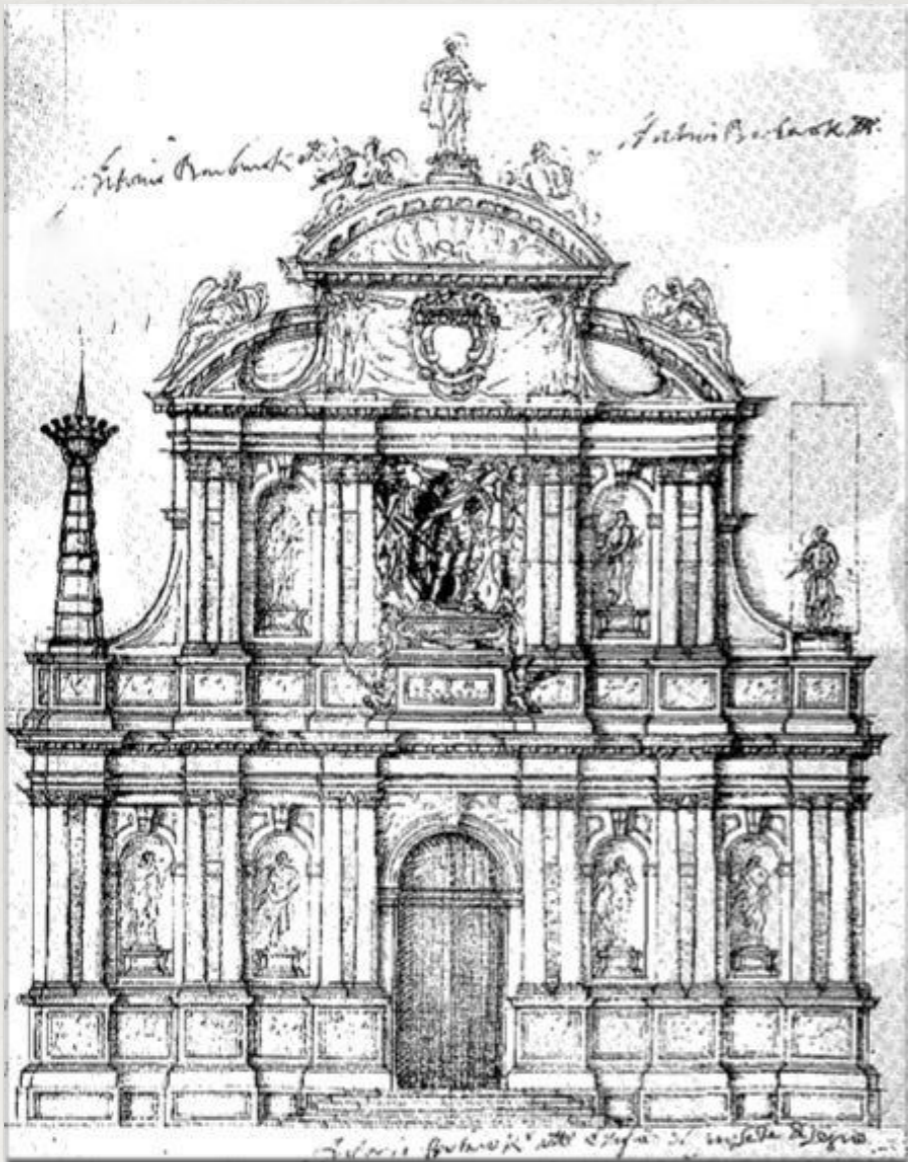
Back

Baroque architecture

- the first half of the 17th century;
- fluidity of design;
- sense of drama and encrustation;
- structures with flowing, curving shapes;



Traits:



- ✦ *Curving forms*
- ✦ *Massing of elements*
- ✦ *Distortion*
- ✦ *Volutes*
- ✦ *Interplay of light and shadow*

Ladmarks

- ✦ *Saints Peter and Paul Church, Cracow*



- ✦ *Visitationist Church*



- ✦ *Wilanow Palace, Warsaw*



- ✦ *Rydzyzna Castle*



Back

Classicism

- the 18th century as the result of French infiltrations into the Polish milieu;
- centered in Warsaw under the reign of Stanisław August Poniatowski;



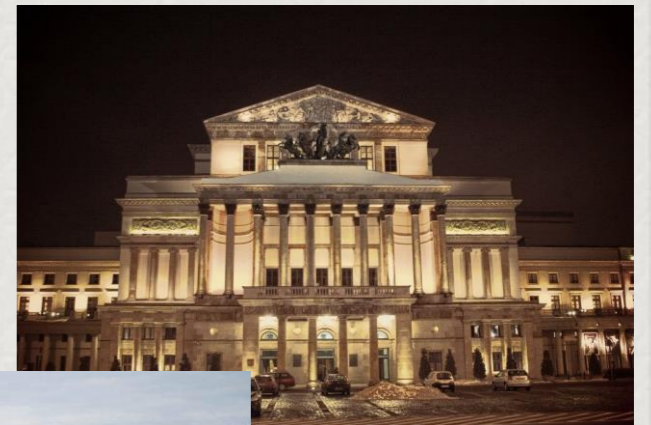
Traits:



- ✦ *Grandeur of scale*
- ✦ *Blank walls*
- ✦ *Many columns*
- ✦ *Clean lines*
- ✦ *Simplicity and symmetry*

Landmarks in Warsaw

- ✦ *Bank Square*
- ✦ *Grand Theatre*
- ✦ *Palace on the water*
- ✦ *St. Anna church*
- ✦ *Belvedere*



Back

Modern architecture

- at the turn of the 20th century
- styles such as Futurism, Post-modern and New Classical;
- forms free of unnecessary details;
- focus on simplicity;
- honouring of the materials;



Traits:



- ✿ *Lack of the decoration*
- ✿ *Use of modern materials*
- ✿ *Use of glass and natural light*
- ✿ *Interaction with interior and exterior spaces*

Ladmarks

- ✦ *POLIN Museum of the history of Polish Jews, Warsaw*
- ✦ *University of Warsaw Library, Warsaw*
- ✦ *Cosmopolitan, Warsaw*
- ✦ *Cultural and Congress Centre, Torun*



Sources

- <http://www.chadwicks.ie/blog/10-key-architecture-styles-and-their-defining-characteristics/>
- <https://www.travelranker.com/poland-2/baroque-architecture.html>
- http://www.newworldencyclopedia.org/entry/Baroque_Architecture
- <https://culture.pl/en/article/a-foreigners-guide-to-polish-architecture>
- <https://www.ranker.com/list/poland-architecture-famous-landmarks-and-buildings/reference>

Thank you



TRACING OUR
EUROPEAN SPIRIT

Erasmus+ 2017 - 2019

Thank you



Erasmus+

Ten projekt został zrealizowany przy wsparciu finansowym Komisji Europejskiej. Projekt lub publikacja odzwierciedlają jedynie stanowisko ich autora i Komisja Europejska nie ponosi odpowiedzialności za umieszczoną w nich zawartość merytoryczną.

This project has been funded with support from the European Commission. This publication [communication] reflects the views only of the author, and the Commission cannot be held responsible for any use which may be made of the information contained therein.



TRACING OUR
EUROPEAN SPIRIT

Erasmus+ 2017 - 2019

Thank you



Co-funded by the
Erasmus+ Programme
of the European Union

Ten projekt został zrealizowany przy wsparciu finansowym Komisji Europejskiej. Projekt lub publikacja odzwierciedlają jedynie stanowisko ich autora i Komisja Europejska nie ponosi odpowiedzialności za umieszczoną w nich zawartość merytoryczną.

This project has been funded with support from the European Commission. This publication [communication] reflects the views only of the author, and the Commission cannot be held responsible for any use which may be made of the information contained therein.