



Let's go for a ride! The physics of roller-coasters

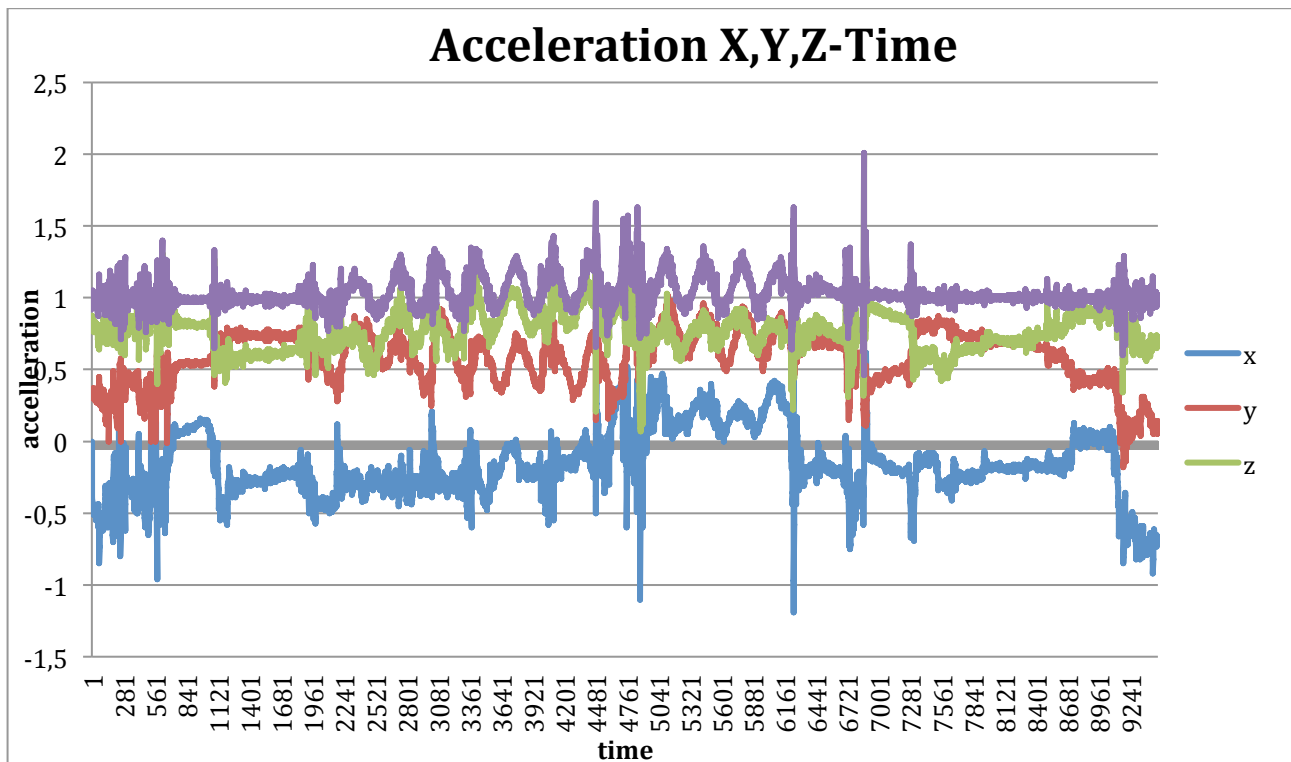
**AQUILA TONANTE – Montanari Federica, Donati Gianmarco,
Santi Margherita, Coletta Vittorio & Pirazzini Giada**

When we went to Mirabilandia, we've gone in our attraction and we used an app in the phone for taking dates of acceleration and angular speed.

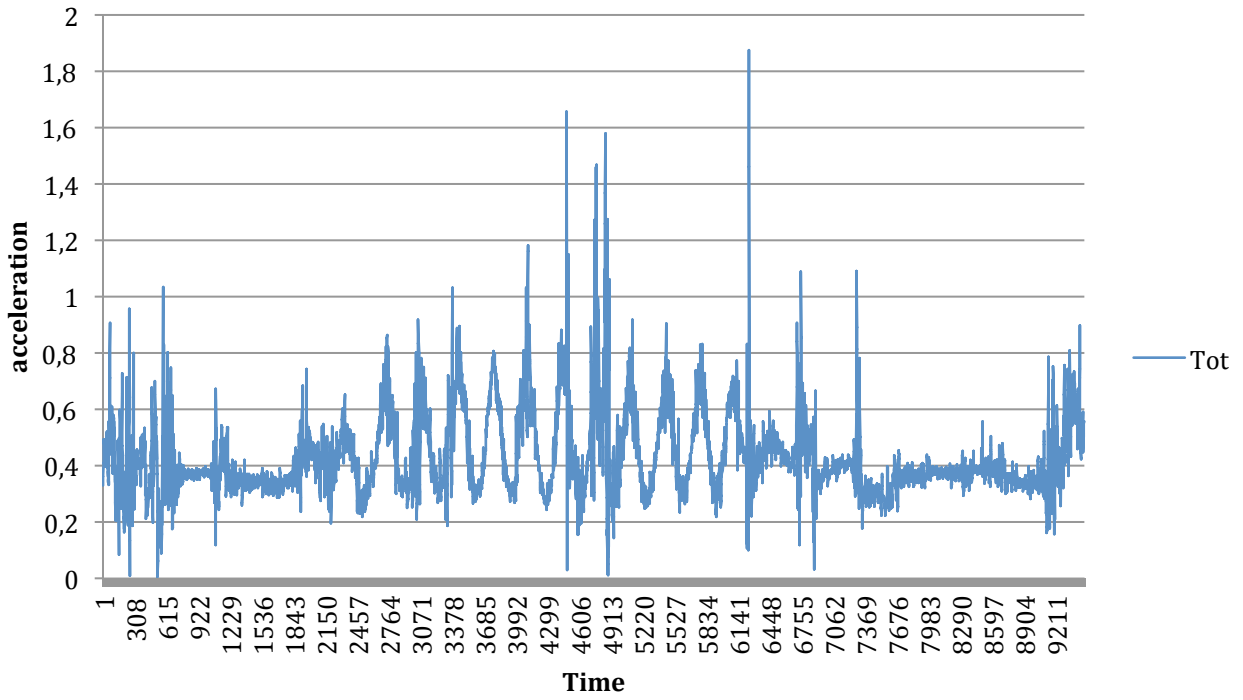
The first graph represent the acceleration of Aquila Tonante in the three direction (x,y,z) and there is also the total of the direction, that is represented by the purple line.

In the second graph there is only the acceleration that is the sum of the three acceleration of the first graph.

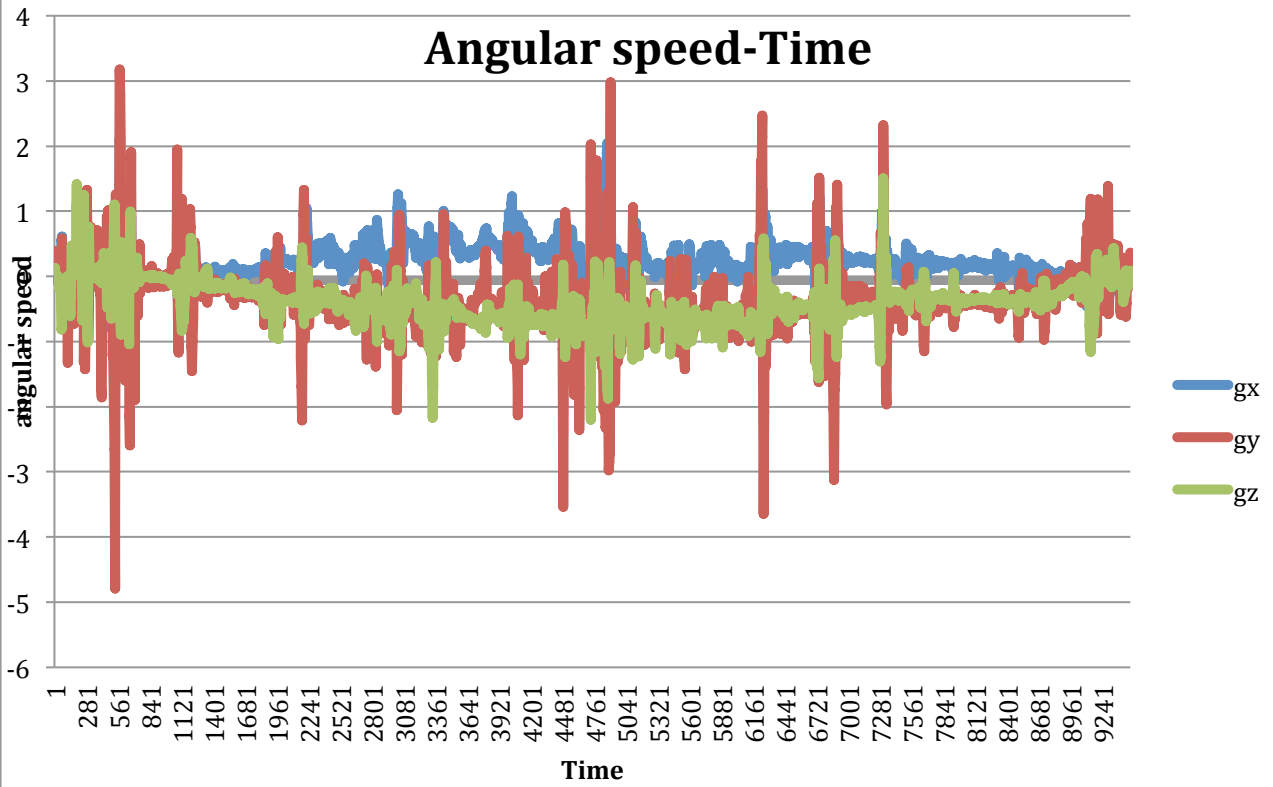
The third graph represent the angular speed in the three direction (gx,gy,gz).



acceleration-time



Angular speed-Time





This is Aquila Tonante

