

AIR POLLUTION

The background of the slide is a photograph of an industrial facility, likely a power plant or refinery. Several tall, cylindrical smokestacks are visible, with thick white plumes of smoke rising from them and drifting across the sky. The sky is a clear, bright blue with scattered white clouds. The industrial buildings and piping are in the lower half of the frame, showing a complex network of structures.

GROUP NO. 9 - SLOVENIA

MEMBERS: ANA MANCA RUPARČIČ,

JULIJA POLJANEC, LAURA ILLOVAR,

LENA ZORMAN, KATJA ŠUŠTARŠIČ

FACULTY OF EDUCATION

UNIVERSITY OF LJUBLJANA

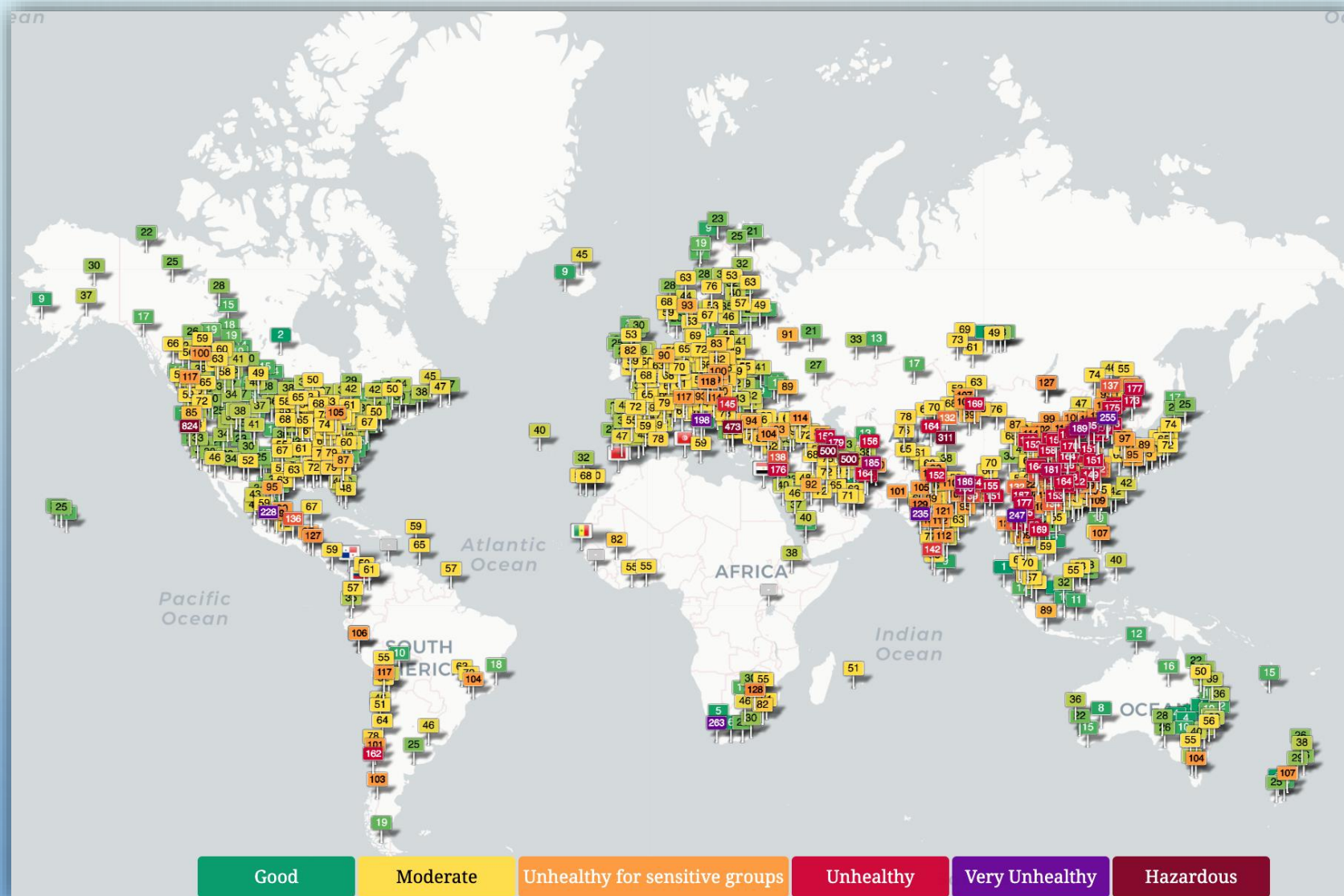
SLOVENIA

WHAT IS AIR POLLUTION?

- [POLLUTION](#) IS NOW A COMMONPLACE TERM, THAT OUR EARS ARE ATTUNED TO. WE HEAR ABOUT THE VARIOUS FORMS OF [POLLUTION](#) AND READ ABOUT IT THROUGH THE MASS MEDIA. AIR POLLUTION IS ONE SUCH FORM THAT REFERS TO THE CONTAMINATION OF THE AIR, IRRESPECTIVE OF INDOORS OR OUTSIDE. A PHYSICAL, BIOLOGICAL OR CHEMICAL ALTERATION TO THE AIR IN THE ATMOSPHERE CAN BE TERMED AS POLLUTION. IT OCCURS WHEN ANY HARMFUL GASES, DUST, SMOKE ENTERS INTO THE ATMOSPHERE AND MAKES IT DIFFICULT FOR [PLANTS](#), [ANIMALS](#), AND HUMANS TO SURVIVE AS THE AIR BECOMES DIRTY.
- [AIR POLLUTION](#) CAN FURTHER BE CLASSIFIED INTO TWO SECTIONS- VISIBLE AIR POLLUTION AND INVISIBLE AIR POLLUTION. ANOTHER WAY OF LOOKING AT AIR POLLUTION COULD BE ANY SUBSTANCE THAT HOLDS THE POTENTIAL TO HINDER THE ATMOSPHERE OR THE WELL BEING OF THE LIVING BEINGS SURVIVING IN IT. THE SUSTAINMENT OF ALL THINGS LIVING IS DUE TO A COMBINATION OF GASES THAT COLLECTIVELY FORM THE ATMOSPHERE; THE IMBALANCE CAUSED BY THE INCREASE OR DECREASE IN THE PERCENTAGE OF THESE GASES CAN BE HARMFUL TO SURVIVAL.

SOURCE: [HTTPS://WWW.CONSERVE-ENERGY-FUTURE.COM/CAUSES-EFFECTS-SOLUTIONS-OF-AIR-POLLUTION.PHP](https://www.conserve-energy-future.com/causes-effects-solutions-of-air-pollution.php)

AIR POLLUTION IN THE WORLD



SOURCE: [HTTPS://AQICN.ORG/MAP/WORLD/](https://aqicn.org/map/world/)

VARIOUS CAUSES OF AIR POLLUTION

- THE BURNING OF FOSSIL FUELS - SULFUR DIOXIDE EMITTED FROM THE COMBUSTION OF FOSSIL FUELS LIKE COAL, PETROLEUM AND OTHER FACTORY COMBUSTIBLES ARE ONE THE MAJOR CAUSE OF AIR POLLUTION,
- AGRICULTURAL ACTIVITIES,
- EXHAUST FROM FACTORIES AND INDUSTRIES,
- MINING OPERATIONS,
- POISONOUS GAS,
- EMISSION FROM VEHICLES,
- POLLUTION FROM AIR CONDITIONERS,
- HOUSEHOLD POLLUTION,
- POLLUTION FROM NATURAL EVENTS, ...

SOURCE: [HTTPS://WWW.CONSERVE-ENERGY-FUTURE.COM/CAUSES-EFFECTS-SOLUTIONS-OF-AIR-POLLUTION.PHP](https://www.conserve-energy-future.com/causes-effects-solutions-of-air-pollution.php)

DISADVANTAGES OF AIR POLLUTION

- AIR POLLUTION KILLS AN ESTIMATED SEVEN MILLION PEOPLE WORLDWIDE EVERY YEAR. WHO DATA SHOWS THAT 9 OUT OF 10 PEOPLE BREATHE AIR CONTAINING HIGH LEVELS OF [POLLUTANTS](#). WHO IS WORKING WITH COUNTRIES TO MONITOR AIR POLLUTION AND IMPROVE AIR QUALITY.
- FROM SMOG HANGING OVER CITIES TO SMOKE INSIDE THE HOME, AIR POLLUTION POSES A MAJOR [THREAT TO HEALTH](#) AND CLIMATE. THE COMBINED EFFECTS OF AMBIENT (OUTDOOR) AND HOUSEHOLD AIR POLLUTION CAUSE ABOUT SEVEN MILLION PREMATURE DEATHS EVERY YEAR, LARGELY AS A RESULT OF INCREASED MORTALITY FROM STROKE, HEART DISEASE, CHRONIC OBSTRUCTIVE PULMONARY DISEASE, LUNG CANCER AND ACUTE RESPIRATORY INFECTIONS.
- MORE THAN 80% OF PEOPLE LIVING IN URBAN AREAS THAT MONITOR AIR POLLUTION ARE EXPOSED TO AIR QUALITY LEVELS THAT EXCEED WHO GUIDELINE LIMITS, WITH LOW- AND MIDDLE-INCOME COUNTRIES SUFFERING FROM THE HIGHEST EXPOSURES, BOTH INDOORS AND OUTDOORS.

SOURCE: [HTTPS://WWW.WHO.INT/HEALTH-TOPICS/AIR-POLLUTION#TAB=TAB_1](https://www.who.int/health-topics/air-pollution#tab=tab_1)

Research question

HOW POLLUTED THE AIR IS?

INTRODUCTION



SUPPLIES:

- 2 COTTON PADS
- PENCIL - TO DRAW A SMALL SQUARE ON EACH PAD

WHERE TO PUT THOSE 2 COTTON PADS?

- 1ST: SOMEWHERE IN A **CITY**
- 2ND: SOMEWHERE IN **NATURE**



LEAVE THEM FOR **2 DAYS**



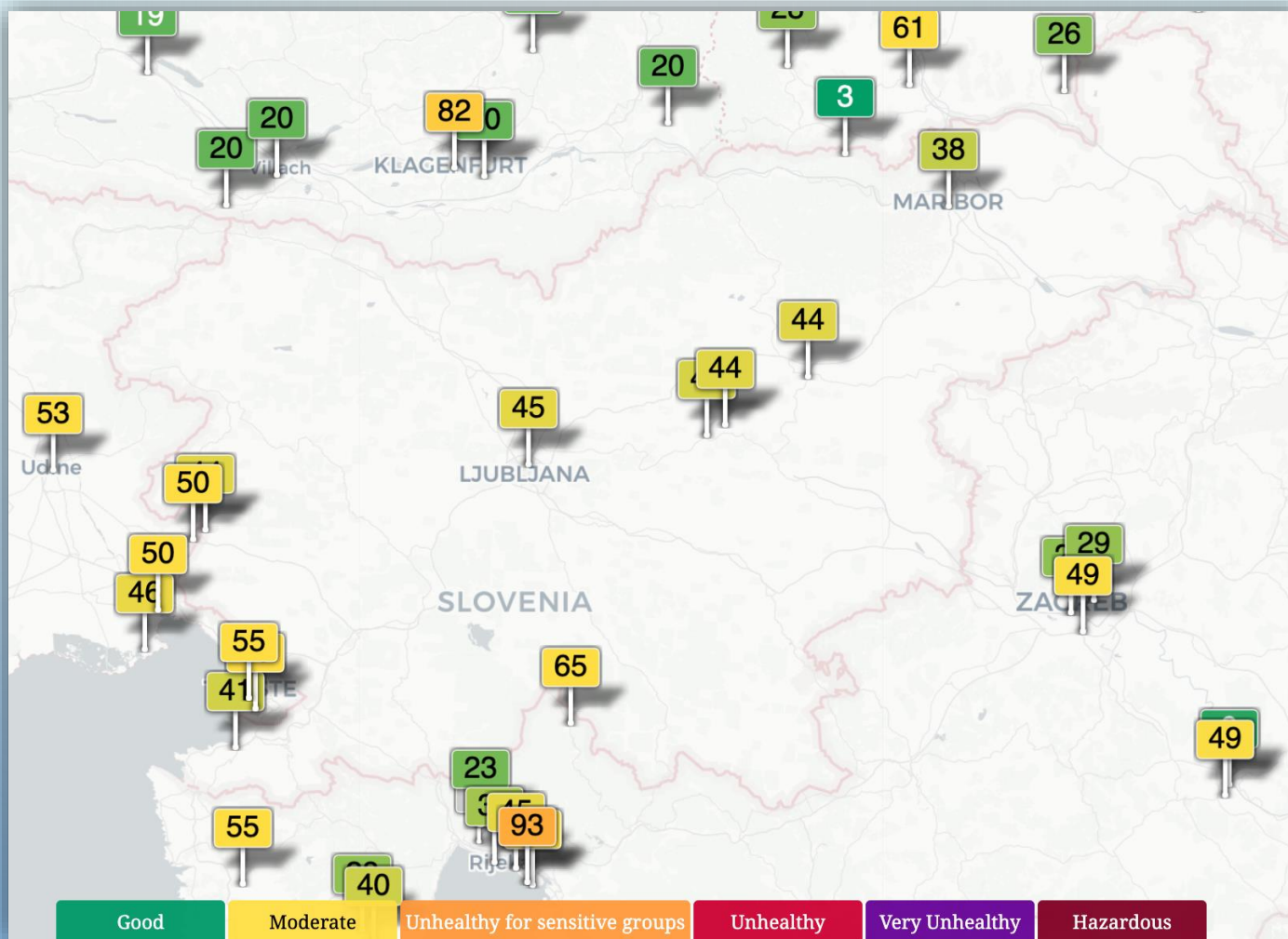
MAKE A COMPARISON OF EXTERIOR OF THE TWO COTTON PADS &

ANSWER THE RESEARCH QUESTION

SOURCE:

<https://www.youtube.com/watch?v=QC7BMWN11JK&feature=youtu.be&fbclid=IwAR1WCHUEWIA6SQJ5GIQEOEFRHD1BRQ8OI7J7FPRDMOF18KU03MZXTUERXBO>

AIR POLLUTION IN SLOVENIA



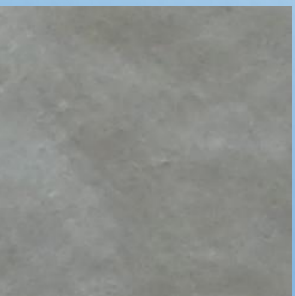
SOURCE: [HTTPS://AQICN.ORG/MAP/WORLD/](https://aqicn.org/map/world/)



RESULTS - SLOVENIA



The cotton on the left was left in the forest and the right one was left by the road. Pet which was by the road was more polluted than pad in the forest.



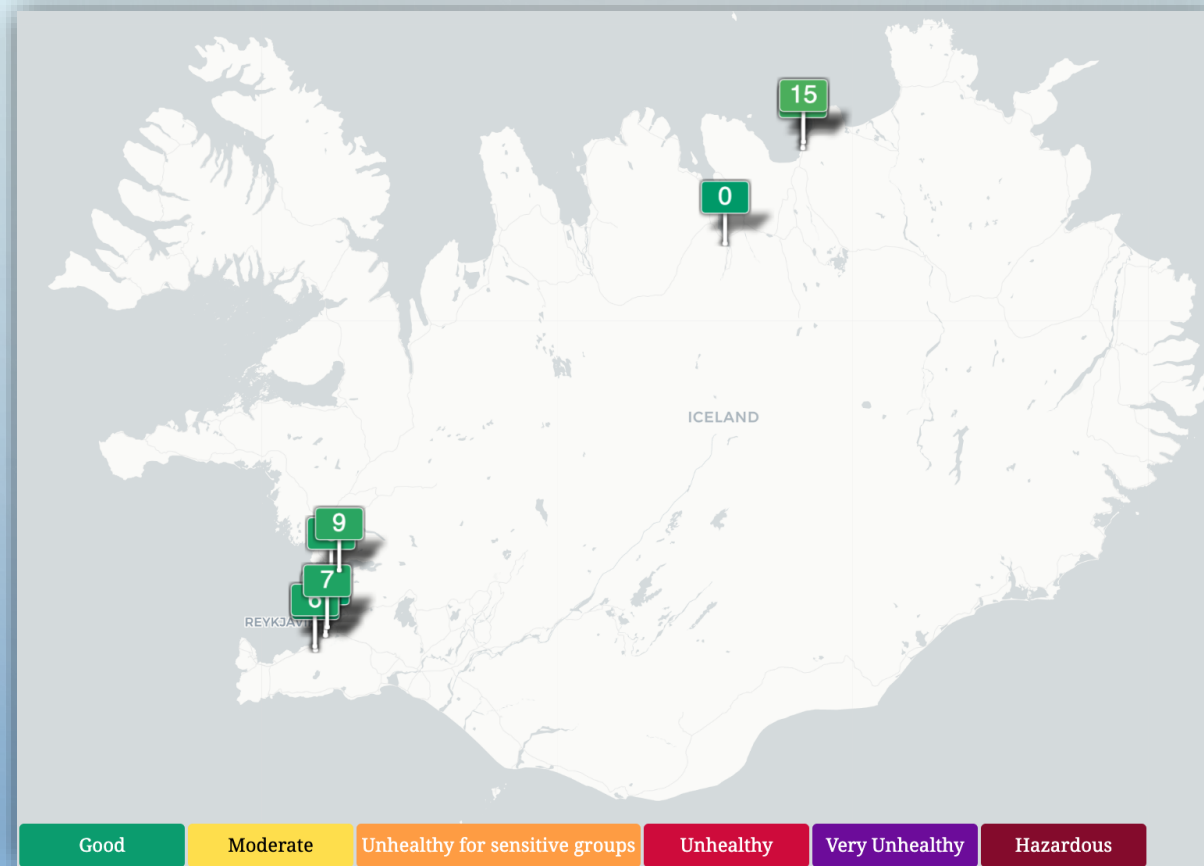
9 particles/cm²



18 particles/cm²



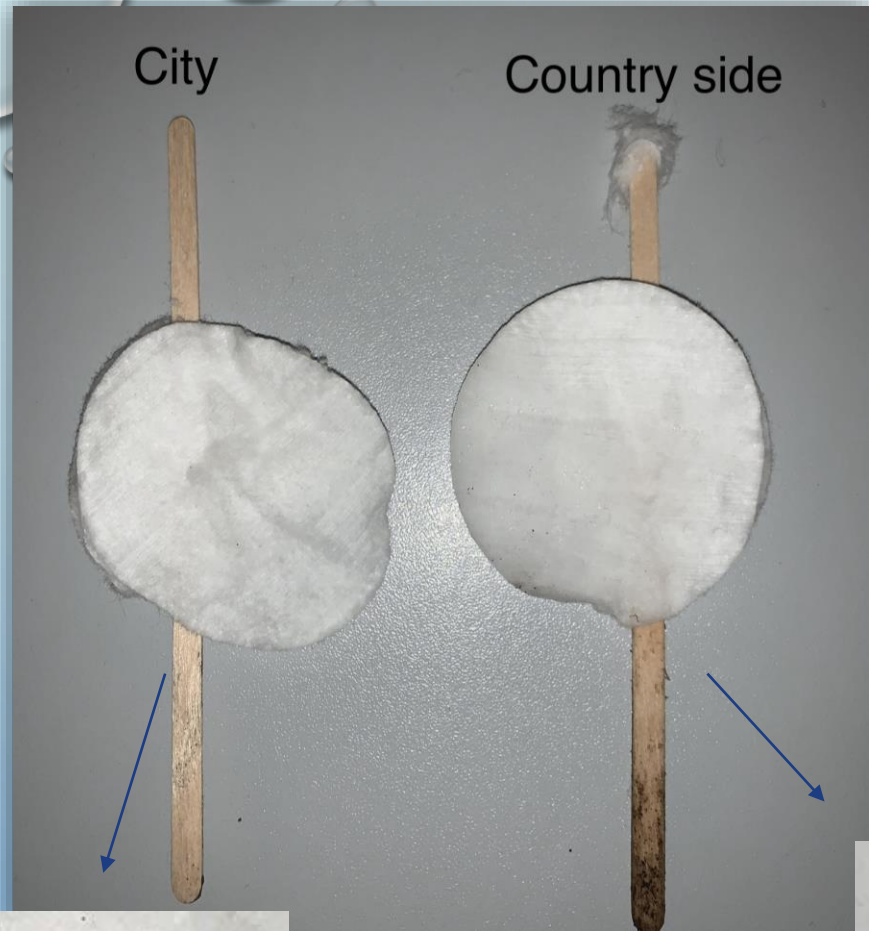
AIR POLLUTION IN ICELAND



SOURCE: [HTTPS://AQICN.ORG/MAP/WORLD/](https://aqicn.org/map/world/)



RESULTS - ICELAND



The cotton on the left was left near a city street and the one on the right was left in a field. We had a lot of wind and snow these last two days, but the pad on the right is a little wet from the snowy fields. I would say that the pad on the right is a little bit more dirty than the left one. Which means that there is more pollution around the country side.



13 particles/cm²



23 particles/cm²

COMPARISON

	SLOVENIA	ICELAND
Where is more particles/cm ²	Near the road	On field

We had two different results. In Slovenia we have more particles/cm² near the road, but in Iceland they have more particles on country side – fields. This results couldn't be real because we didn't have rain or snow when we put our pads out, meanwhile when in Iceland they had a snow and rain, so our conditions weren't the same.