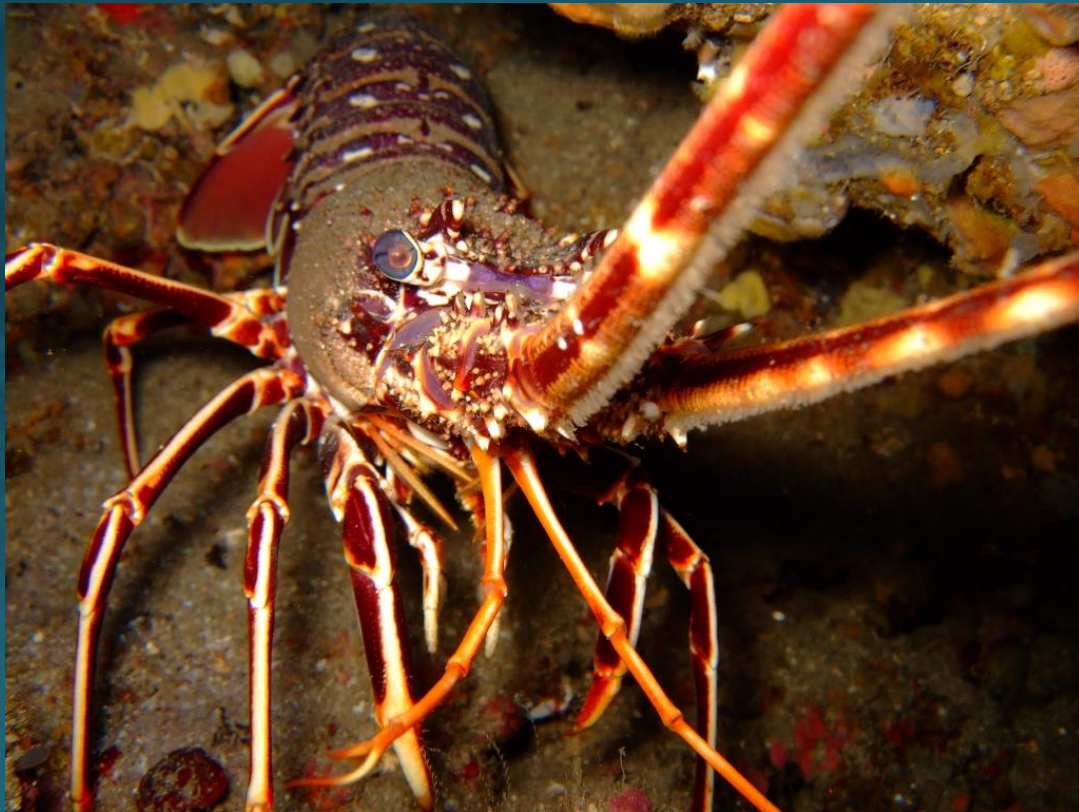


Fish living in your area

Carla Elefante

LOBSTER

Lobster is a crustacean that lives in the depths of the Mediterranean Sea and the eastern Atlantic Ocean.



TUNA

This fish is found in the waters of the Atlantic Ocean, the Mediterranean Sea and the southern Black Sea.



SWORDFISH

This species is present in the zones of the Mediterranean Sea, the Black Sea, the Sea of Marmara and the Sea of Azov.

