



Welcome to the International University City of Lappeenranta!

VIBRANT HOME IN LAPPEENRANTA



LAPPEENRANTA
INTERNATIONAL UNIVERSITY CITY



3rd - Best in Travel 2017,
Top 10 countries
2017



No 1 in safety and security
Travel and Tourism
Competitiveness Report 2017



Top 3 - Best trips,
Places you need to visit in
2017



Happiest country in the
world 2018 & 2019

Finland - the best place to travel

International City of Students and Tourists, Commercial Centre of South-Eastern Finland

- In 1649, Queen Christina of Sweden signed the instrument of foundation for the new town
- Developed from a Grand Duchy of Finland camp-town of the late 1800s and a garrison town of an independent Finland to an international university city and tourist destination
- Provincial centre of South Karelia
- Finland's 13th largest city and the commercial centre of south-eastern Finland
- On the border between the EU and Russia
- Population ca. 73,000, region's population ca. 134,000



Situated along the Southern Shores of Europe's 4th largest lake, Saimaa, on the Border between the EU and Russia

Lappeenranta – Helsinki 215 km
Lappeenranta – St. Petersburg 195 km
Lappeenranta – Moscow 925 km

Halfway
between
Helsinki
and
St. Petersburg



Provincial Centre of South Karelia and home of more than half of the Inhabitants of the Province



Well Connected City

Excellent Connections

- Lappeenranta is easy to reach by road, rail and air
- Lappeenranta-Helsinki (215 km):
 - approx. 2 hours by train
 - approx. 2 h 45 min by car
- Lappeenranta-St. Petersburg (195 km):
 - 1.5 hours by Allegro train
- Lappeenranta International Airport is the first regionally owned airport in Finland





Livable City

Lakeside City



Total area 1,756 km²
- land area 1,452 km²
- water area 304 km²

Length of shoreline:
- over 1,000 km

Inhabitants per land km²: 50

SAIMAA IS THE MOST BEAUTIFUL LAKE AREA

in Europe and it is
in the top 5 most
beautiful lakes in
the world.

Listed by The Wall Street Journal in 2014

LAKE
SAIMAA
PUREST
FINLAND

GOSAIMAA.COM
Lappeenranta & Intra region

 **MIKSEI**
Make Development Make Ltd

 **SYKE**

SAVONLINNA
BUSINESS SERVICES LTD

Leverage from
the EU
2014-2020



Popular Tourist Destination

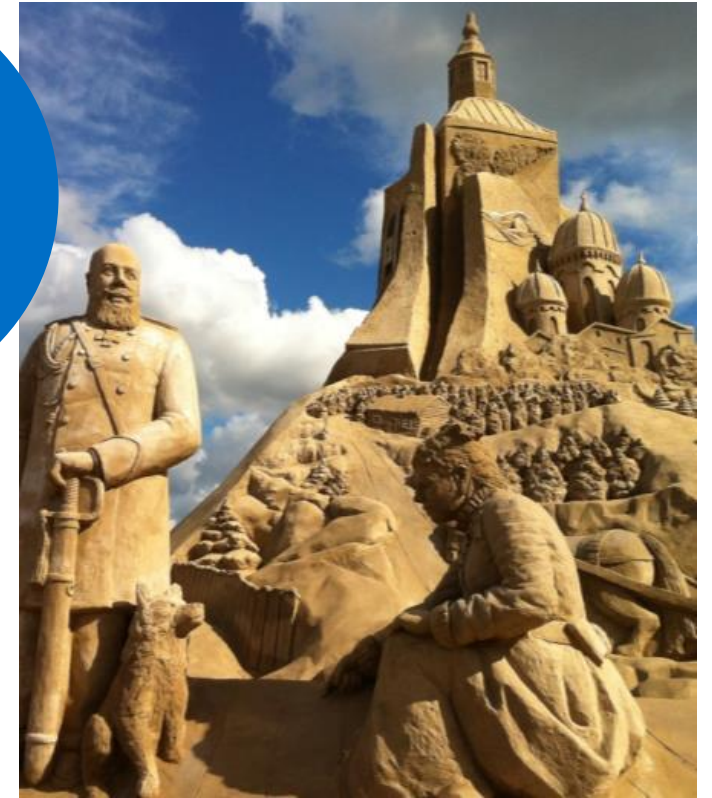
- After Helsinki, Lappeenranta is the second most popular destination for foreign tourists visiting Finland, receiving ca. 1,5 million visitors every year
- Hotel occupancy rates are among the highest in Finland all year
- South Karelian municipalities and travel services promote the province via goSaimaa marketing organisation
- Runner-up destination for Finnish Tax-free sales
- Lake Saimaa is among the five most spectacular lakes in the world (WSJ)
- Lappeenranta Harbour is among the best providers of boating services in Finland



Growing City of Tourism

Finland's
largest
Sandcastle

- International airport
- The historic Fortress
- Experience Saimaa activities and 15 000 islands around year: sailing, boating, ice fishing, nordic skating, skiing, floating, cottages to rent
- Finland's most beautiful golf course: Tuosa
- Rauha is the biggest tourist destination in Scandinavia on 300 hectares
 - Holiday Club Saimaa Spa Hotel & villas
 - Golf course
 - Angry Birds indoor activity park
 - Lake shore recreational areas
- Saimaa cruises & visa-free cruises to Vyborg & St. Petersburg
- Tourism cooperation with Saimaa region and St. Petersburg and Leningrad Oblast





Summer
Activities by the
Lake Saimaa

Versatile Culture and Sports Scene

- New City Theatre



- 100 Year Old City Orchestra



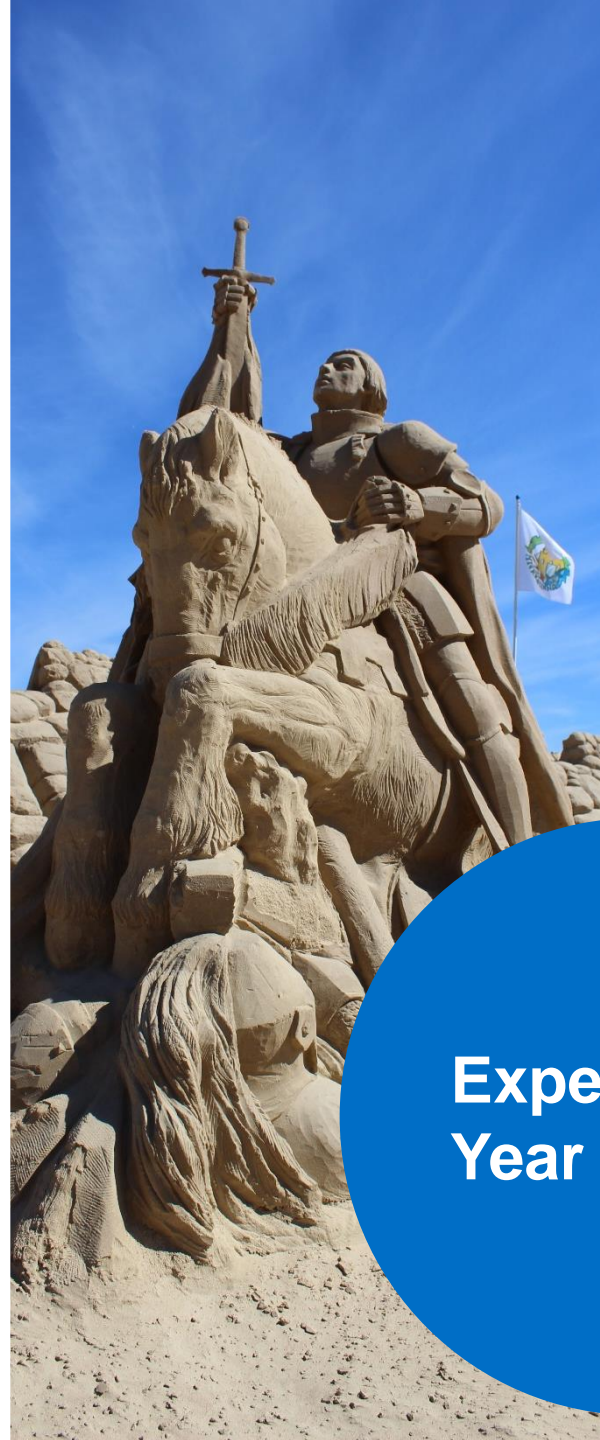
- 500 Recreational Clubs



Year of celebration - 2019

- City 370 years
- LUT university and student union 50 years
- Music school 60 years
- Theater 70 years
- City orchestra 110 years





Experiences
Year Around



Friends across the Globe

Lappeenranta has nine Twin Cities

- | | since |
|--|-------|
| • Denmark - Kolding | 1948 |
| • Estonia - Rakvere | 1994 |
| • Germany - Schwäbisch Hall | 1985 |
| • Hungary - Szombathely | 1983 |
| • Iceland - Stykkisholmur | 1980 |
| • Norway - Drammen | 1948 |
| • Russia - Klin | 1966 |
| • Sweden - Örebro | 1940 |
| • USA - Lake Worth | 1976 |
| • Vyborg – neighbouring city in Russia | 1987 |





**Decrease in
GHG emissions.**



**Active public
transport.**



**High waste
recycling rate.**



**Extensive use of biomass
as a by-product of the
forest industry in energy
production.**



**The biggest inland
windfarm in Finland
2014.**



**Large production of
electricity by solar cells.**



**Energy-efficient
pumping station
purifying Lake
Saimaa.**



**Combined power
and heat production
by CHP plant.**

Carbon Neutral Lappeenranta Roadmap 2030



Networking platform

Greenreality
NETWORK



Reliable Connection between East and West

- Saimaa Canal celebrated its 150th birthday in 2006, and the new lease was signed in Lappeenranta in 2010
- Mustola port is situated along the Saimaa Canal some 20 kilometres from the Russian border, close to the Russian road, rail and river networks
- Mustola is connected by rail to Russia and the Far East
- Lappeenranta Free Zone Oy Ltd is a leading free zone in Finland, with ample container yards and covered storage facilities in the Mustola port area



Forest Industry Competence Cluster

- In terms of production capacity, the forest industry cluster in south-eastern Finland is the largest in Finland and second largest in Europe
- A diverse network of small and medium-sized enterprises offering subcontracting services has developed around the forest industry
- Focus in the creation of new knowledge-based business and companies in the energy efficiency, cleantech and bio sectors





**Finland's Bicycle
City 2015:
195 km primary
bicycle routes**

Original Alternatives of Emphasis in Basic and Upper Secondary Education

- Lappeenranta provides systematic early childhood education for children of pre-school age primarily in their local residential area
- Lappeenranta provides afternoon activities for children in years one and two
- 18 comprehensive schools maintained by the city, 6,100 pupils
- Two upper secondary schools, 1,200 students
- Versatile language options within basic education. Alternatives of emphasis: hi-tech, sport, ice hockey, arts and music
- Special alternatives in upper secondary education: IB, forest cluster, sport, extensive education in the Russian language in the Finnish-Russian School of Eastern Finland





Saimaa University of Applied Sciences
3000 students

LUT University 6500
students

Military Academy
700 students

Saimaa Vocational
College Sampo
4300 students

International University City

14 000 students in town

LUT University

International science community encompasses 6,500 students and experts.

LUT is the best young university in the Nordic countries (Times Higher Education 100 Under 50 Ranking, 2015).

Clean energy and water, the circular economy and sustainable business are the key questions of humankind to which LUT seeks solutions through technology and business.

Combining technology and business, LUT has served as an academic forerunner since 1969.

LUT is compact by size, with intensely focused operations.

The Green Campus is internationally awarded research and education environment.



Leading Meeting place for the EU and Russia

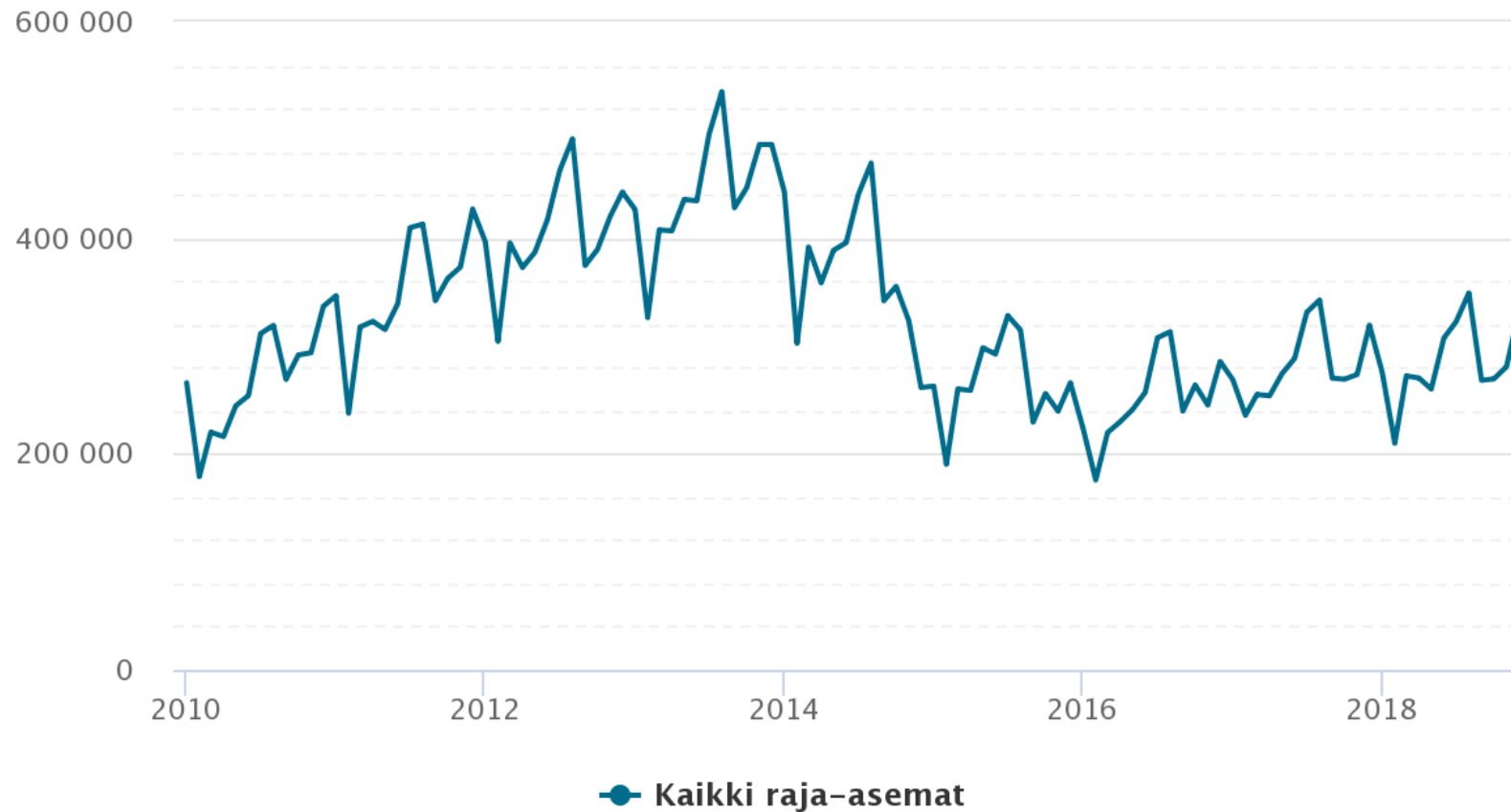
- Significant shared history in commerce
- The world's largest cluster of expertise on Russia
- Cooperation with the city of Vyborg is very close and is under constant development
- Lappeenranta is the nearest European city for the eight million people living in and around St. Petersburg
- Lappeenranta attracts ca. 1,6 million Russian tourists every year
- Lappeenranta is the most significant centre of Russian business operations in Finland and actively builds connections between the European Union and Russia



Russian visits to Finland

Monthly 2014-2018

Venäläisten matkat Suomeen EU- ja Schengen-maiden
ulkopuolelta kuukausittain



Lappeenranta Bucket list

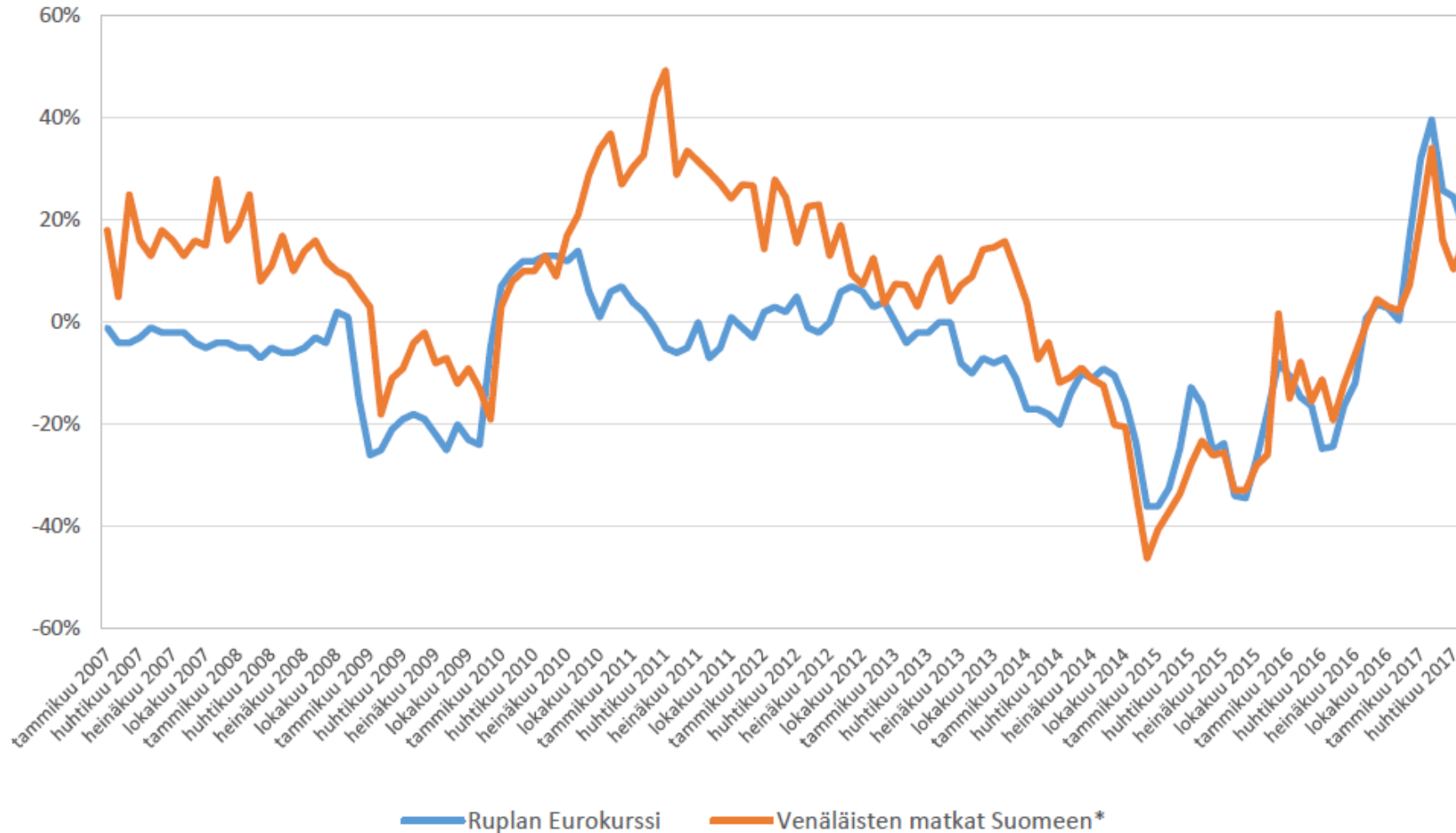
<https://www.visitlappeenranta.fi/en/Themes/Lappeenranta-bucket-list>

https://youtu.be/rvtj_RnZ79U

Northern lights in Lappeenranta



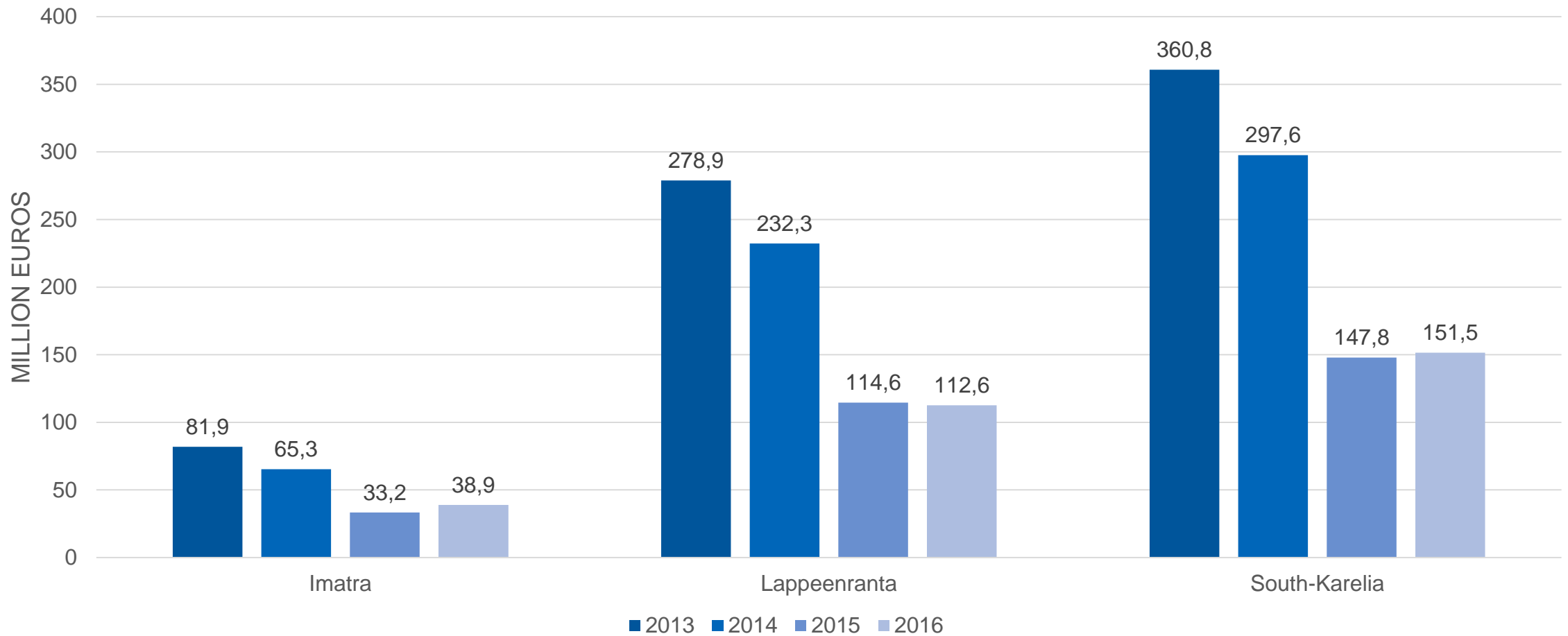
Exchange rate vs. Russian visits to Finland




Source: TAK

* 2007-2010 vain Kaakkois-Suomen raja asemat

Shopping income of Russian tourists





Thank You for your Interest!

www.lappeenranta.fi



LAPPEENRANTA
INTERNATIONAL UNIVERSITY CITY