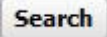
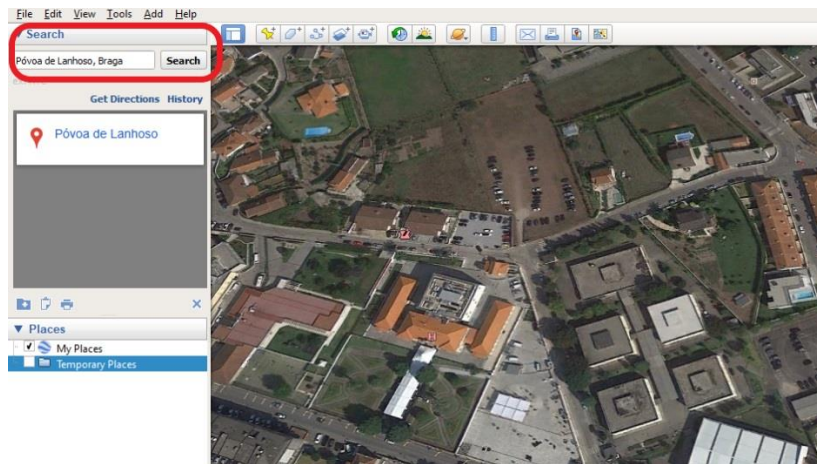



## BLOCK 2 – Let's Explore...

### Search for your school

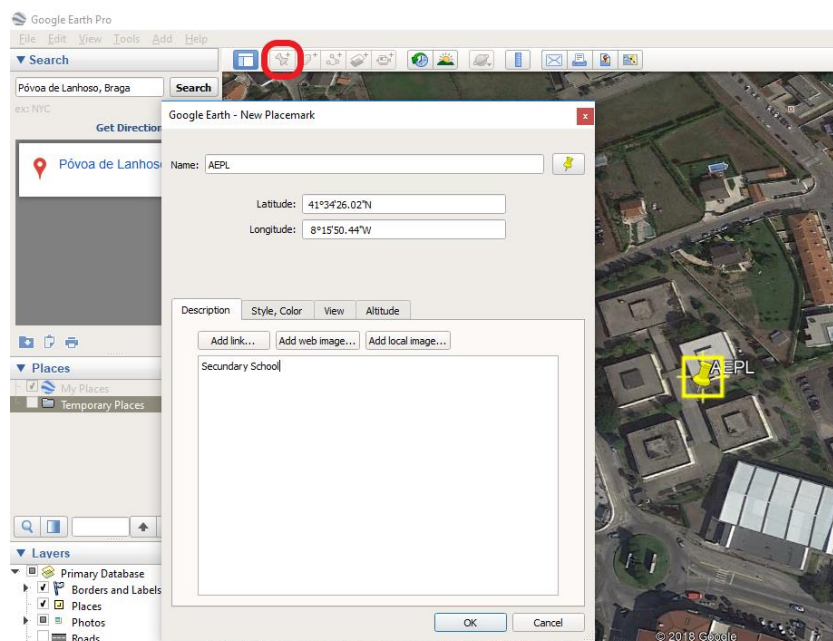
1. Open Google Earth on your computer.
2. In the Search Panel, enter the name of **your school locality** (country, city/place) into the box, and click . Google Earth will “fly” you to the indicated region.
3. With the mouse, navigate and zoom to find **your school**.



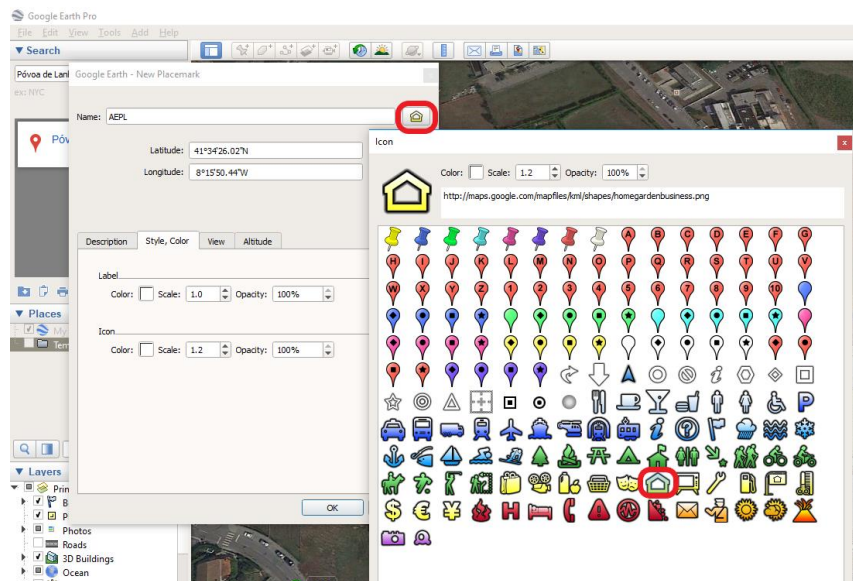
### Add Placemarks

Click the *Add Placemark* button  in the toolbar. A placemark is automatically added to Google Earth. Also, a *New Placemark* dialog box appears.

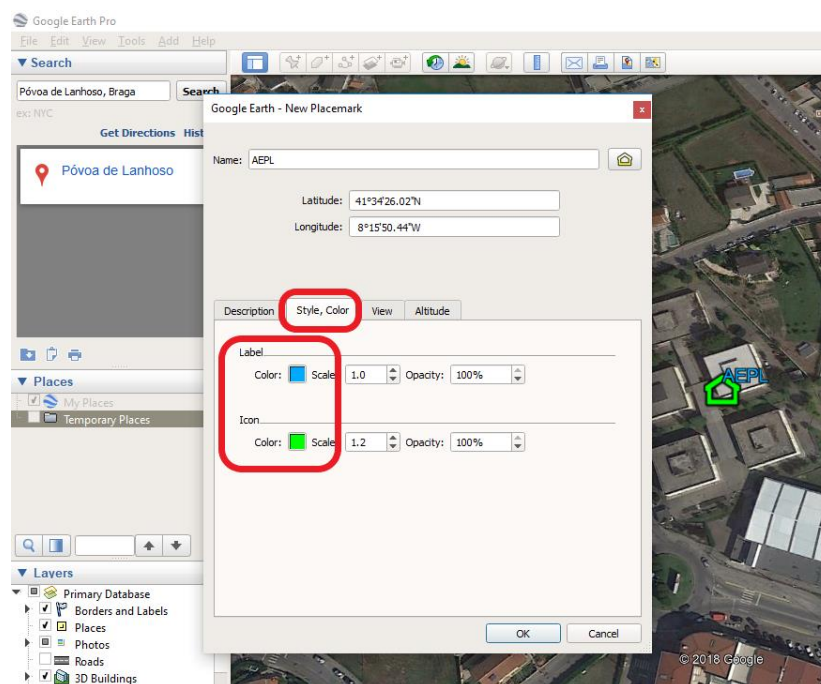
1. Move your placemark's location by clicking and dragging its icon, or by typing a latitude and longitude into the *New Placemark* dialog box.
2. In the *New Placemark* dialog box, type in a name for the placemark in the **Name** field. In this example, we typed “AEPL” that is our school in Portugal, so you write the name of your own school.
3. Type in a description for the placemark in the **Description** field, which will be displayed when a user clicks on the placemark. In this example, we typed “secondary school”, feel free to write whatever you wish.



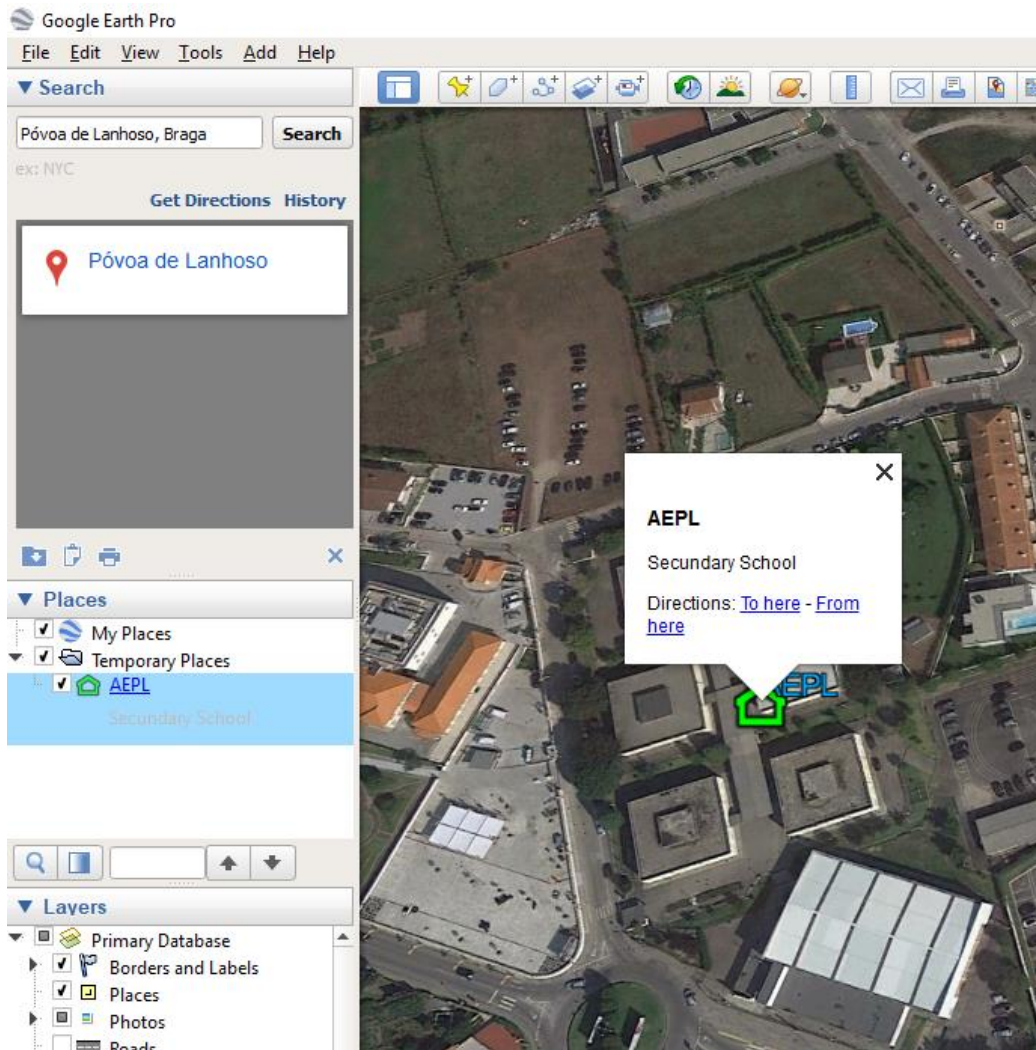
- Click on the icon button in the top-right corner of the window, and choose an icon for your placemark and press **OK**. In this example, we chose a house icon.



- Click on the **Style, Color** tab, and choose a color, scale (or size), and opacity for the placemark icon and label text. In this example, we choose to change our label color to blue and icon to green.



- When you are finished creating your placemark, click **OK** and your placemark will appear in the Places panel. When you click on your placemark's icon or hyperlinked name in Google Earth, a pop-up balloon will appear with your placemark's name and description.

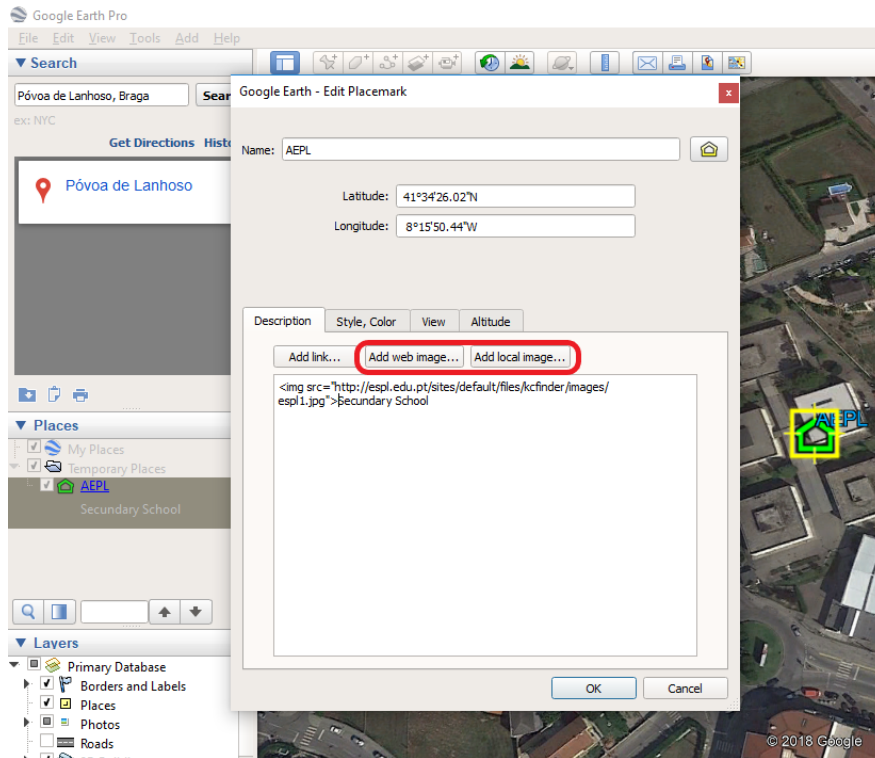


**NOTE:** To edit a placemark's location, name, or description, **right-click with the mouse** on the placemark in the main screen or in the **Places** panel, and choose *Properties* (on a PC) or *Get Info* (on a Mac). Click-and-drag the icon to change the location, or edit the name and description and click **OK**.

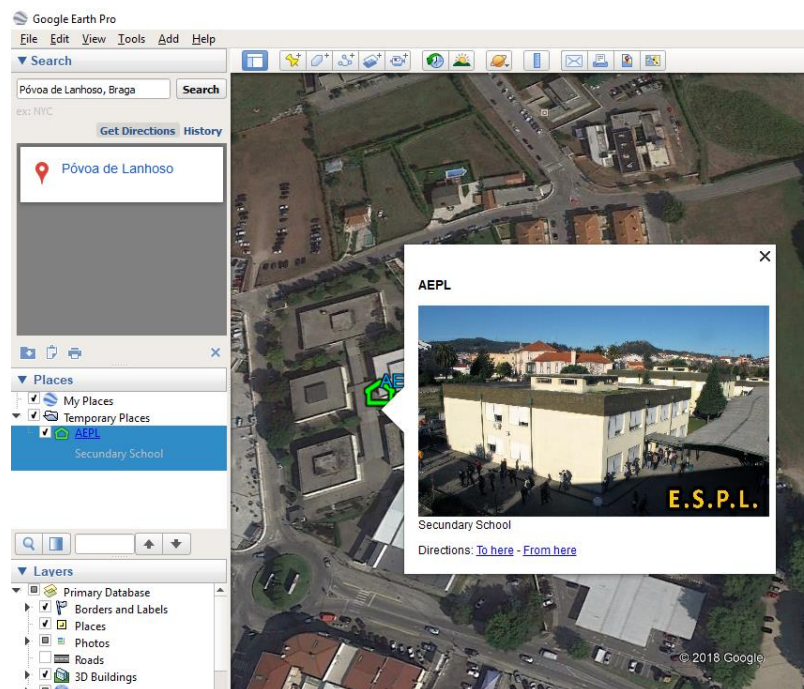


## Add Images to Placemarks

1. Edit the placemark, by right-clicking as explained above.
2. In the tab "Description" choose one (or more) images to add to the description of the Placemark. The images could be located either in your computer or in the web.



3. When you click on the marker with the mouse the description and the images will be displayed:

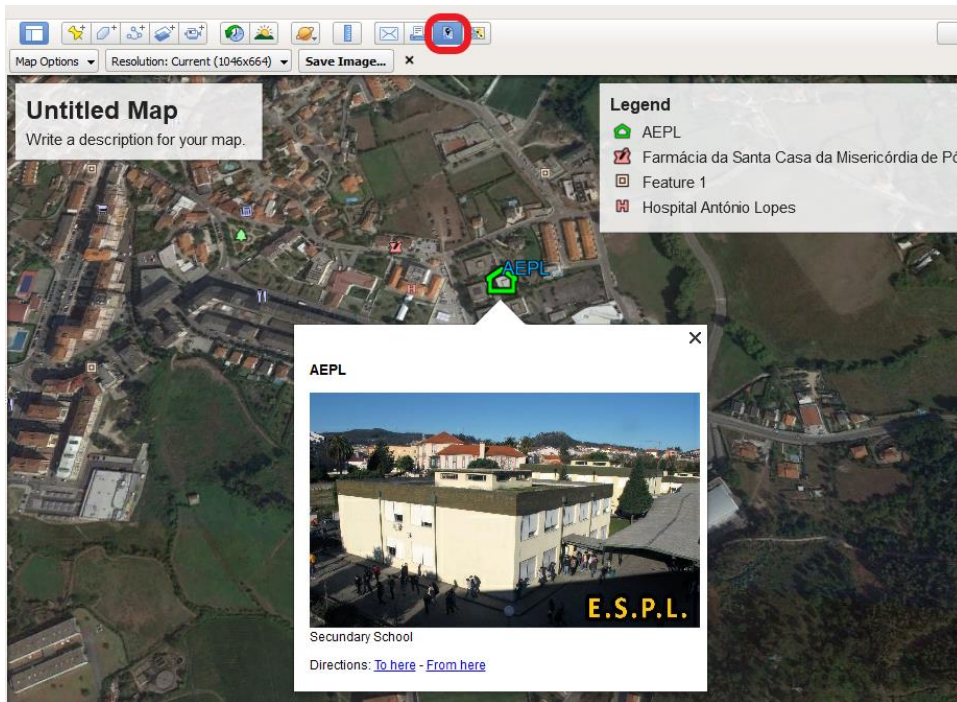


## Saving images of the Map

We can save the actual view in high resolution jpeg images. Just click on the Save Image button in the Tool Bar:



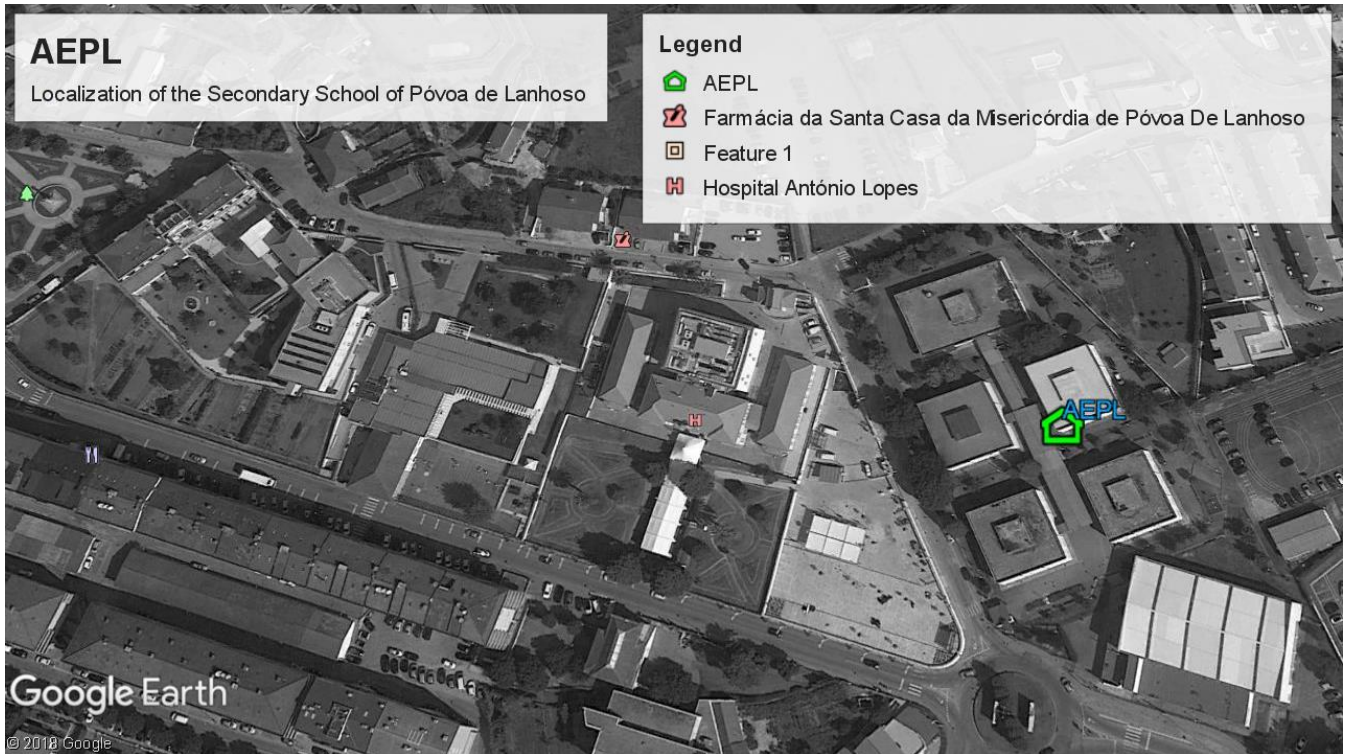
1. After clicking you can adjust the view as you want and setup the map that will be saved:



2. In the "Map Options", button you can setup which info will be saved with the image: title, legend, scale of this additional info, etc., and the styling (color or b&w).
3. In "Resolution" button, you choose the size of the image (horizontal and vertical pixels).
4. If you choose to add a "Map title and description", you can edit the default name and description just clicking on the title box.
5. When you finish the setup, click on the "Save image..." button.



This is an example of a saved image of the view, in 720p, black&white, with Title and Legend, and without scale:



Give a try saving an image of the localization of your school with your own setup.

## And if the Earth is too small for you...

...the sky is the limit, and at the distance of a click:



Everything you learn to do on Earth, you can do on Mars, on the Moon or in the Sky. Just choose what you want to explore on the little Saturn button. **Enjoy!**