

3BHM WIMO Klagenfurt



ETW TRAUM

2 ART STATION

**Complete the three
checklist slides and
add your name on
each slide.
You deserve a badge
for your hard work!
Copy the badge and
add it to the
Twinboard.**

REFLECTION

You have worked so hard at Art Station, so you deserve the badge! Copy this image and add it to the Art Station Assessment Twinboard.

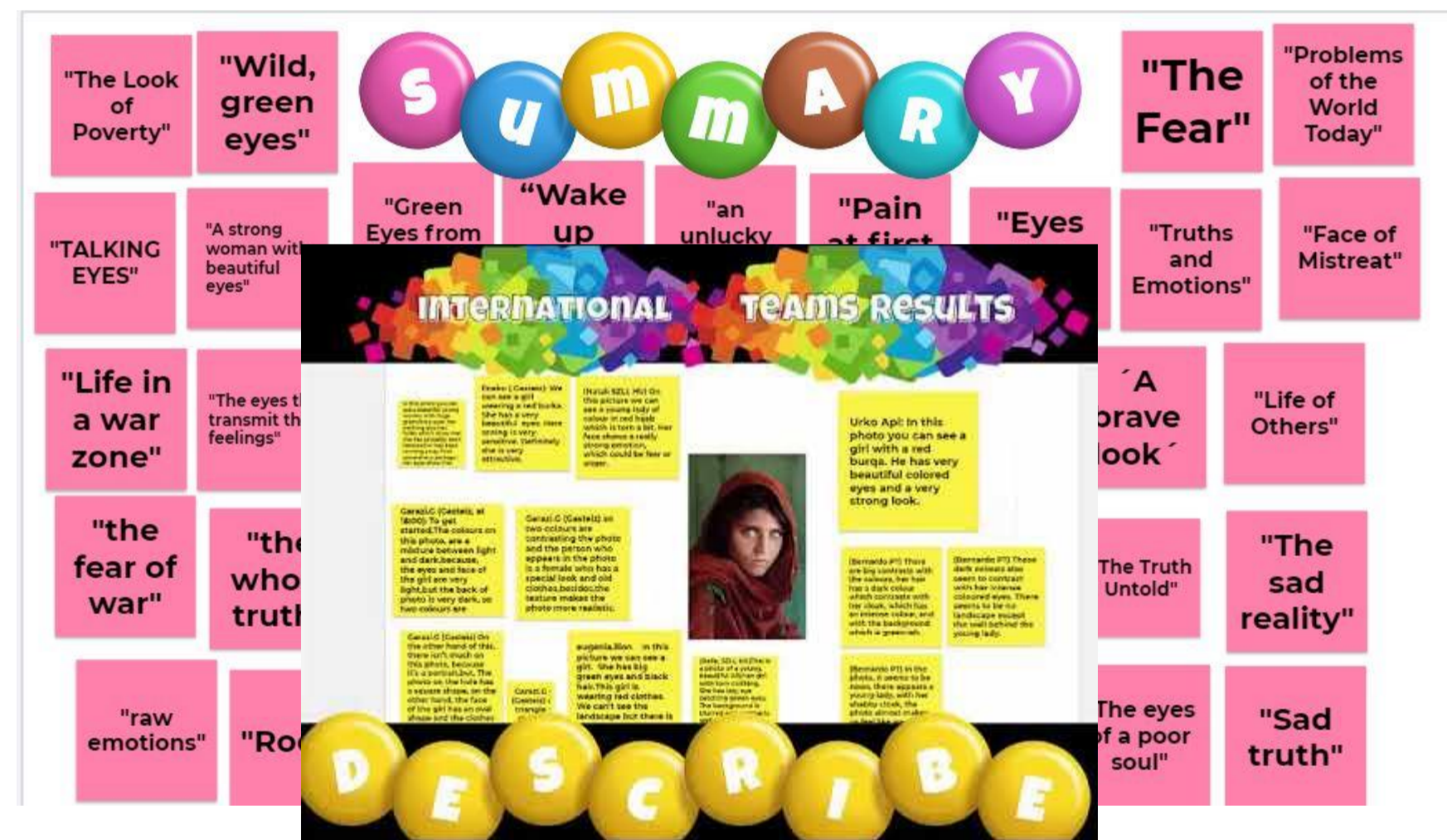
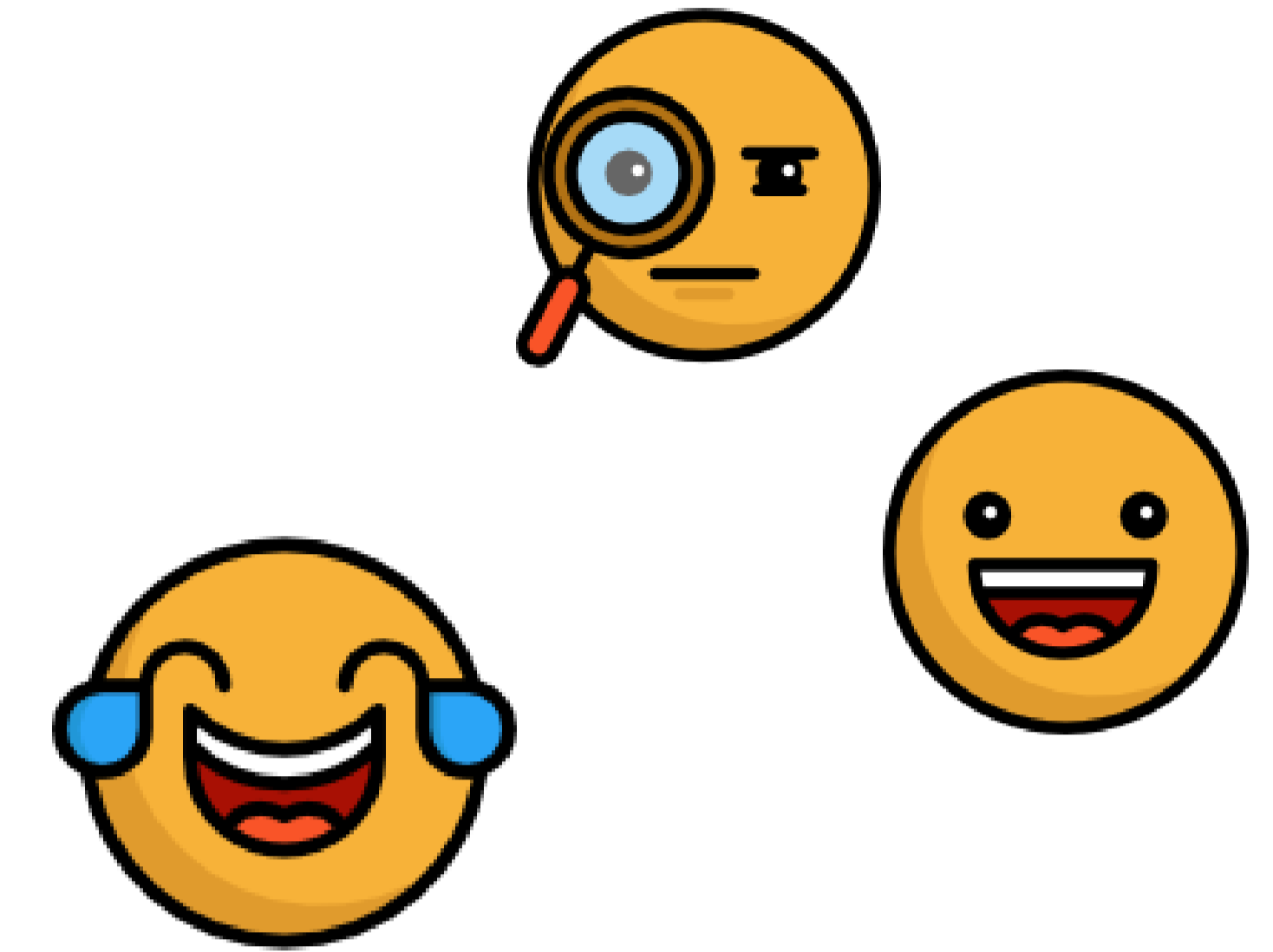
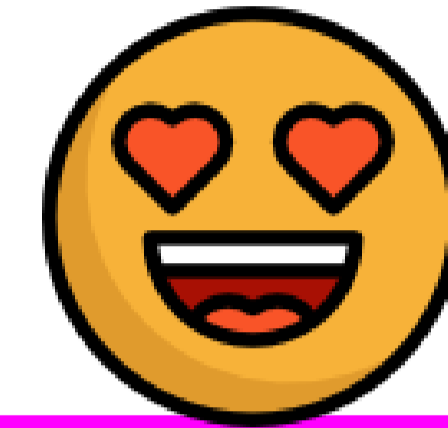


CHECKLIST

Copy and paste the emoji



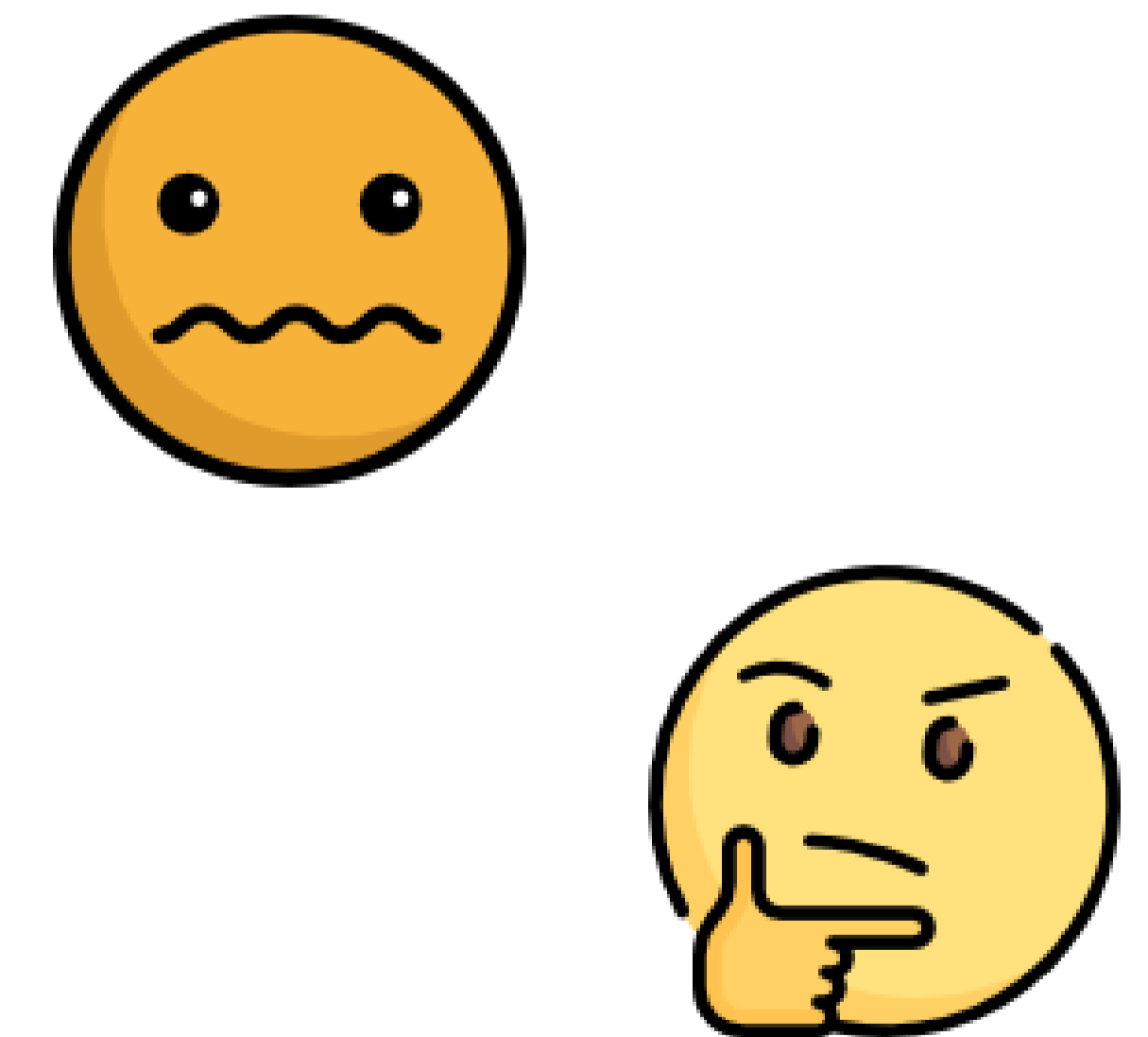
Treasure Hunt game



Decoding photographs working in ten international teams

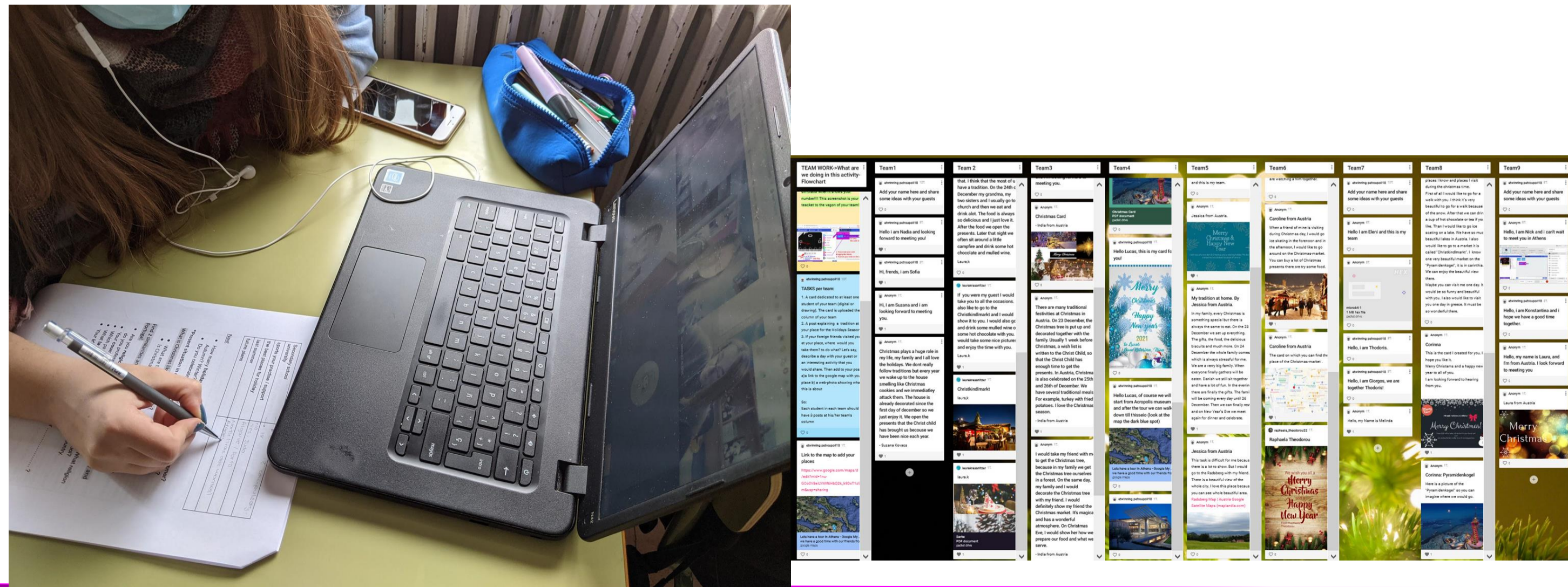
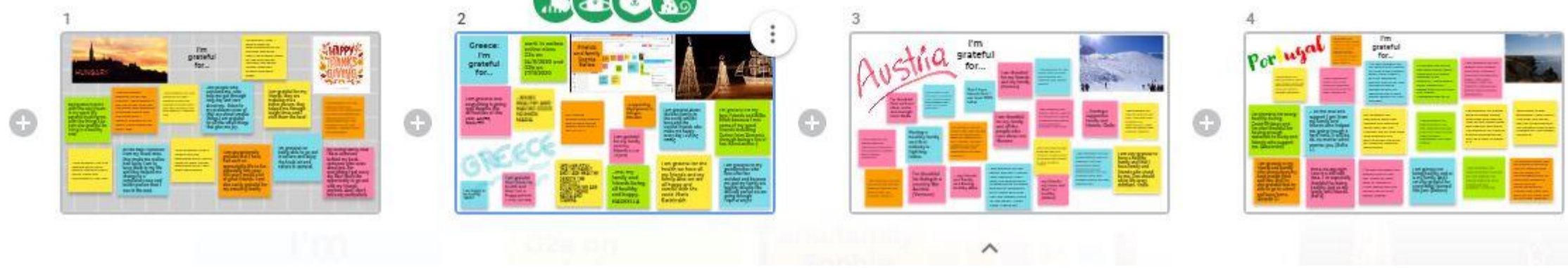


Stories that Move
Watch videos
Read partners' ideas in the forum.
Illustrate a partner's ideas in a poster

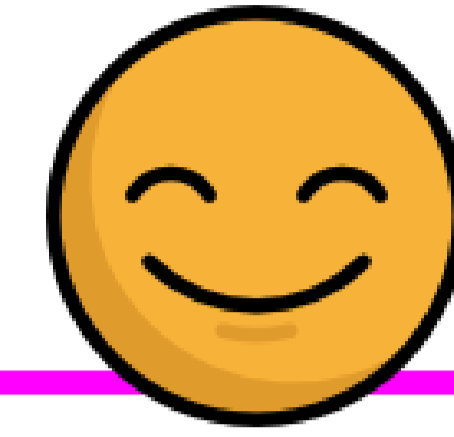


CHECKLIST

I am grateful for...



Thanksgiving



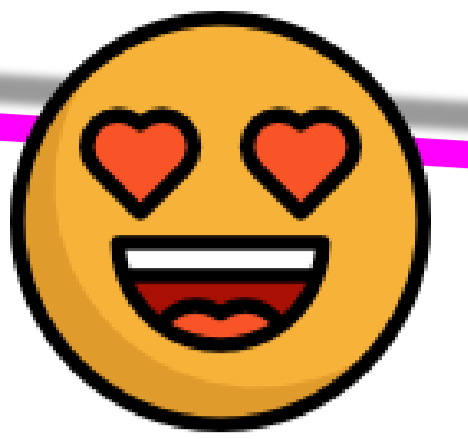
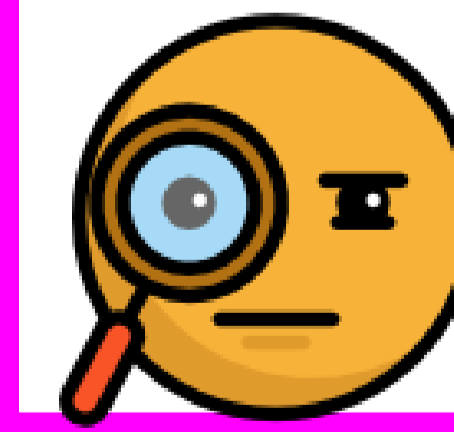
Beethoven gets on the eTwTRAIN-Memes






Advent Calendar Christmas wishes



Live session
Synchronous/Asynchronous
communication



ART STATION

	Excellent 4 pts	Good 3 pts	Fair 2 pts	Poor 1 pts
Participation	<p>Excellent</p> <p>Excellent</p> <p>Student participates in all class activities all the time.</p>	<p>Good</p> <p>Good</p> <p>Student participates in class activities all the time with a few reminders.</p> 	<p>Fair</p> <p>Fair</p> <p>Student participates in class activities around 50% of the time and is in constant need of reminders to participate.</p>	<p>Poor</p> <p>Poor</p> <p>Student rarely participates in class, and needs to be constantly reminded of the need to participate.</p>
Engagement & Effort	<p>Excellent</p> <p>Excellent</p> <p>Student is always fully engaged and tries their best. Always on task and never needs reminding about anything. Student completes work to an excellent quality level.</p>	<p>Good</p> <p>Good</p> <p>Student is always engaged and tries their best most of the time. Student is on task and rarely needs reminding about anything. Student completes work to a high quality level.</p> 	<p>Fair</p> <p>Fair</p> <p>Student needs frequent reminders to remain engaged and to work to the best of their ability. Student completes acceptable work to a reasonable quality level.</p>	<p>Poor</p> <p>Poor</p> <p>Student constantly needs reminding to remain on task. Student rarely completes acceptable work.</p>
Cooperation/Contribution/Safety	<p>Excellent</p> <p>Excellent</p> <p>Student always contributes to group tasks actively. Student always follows directions the first time given and obeys all safety rules.</p>	<p>Good</p> <p>Good</p> <p>Student usually contributes to group tasks actively. Student needs to be reminded to follow directions and safety rules.</p> 	<p>Fair</p> <p>Fair</p> <p>Student doesn't contribute to group task very actively. Student needed to be reminded to follow directions safely.</p>	<p>Poor</p> <p>Poor</p> <p>Student doesn't contribute to group task at all. Student needs to be reminded more than once to follow directions and safety rules during the class.</p>

Use a star for each category