

LYNX

These beautiful big cats have become more common in Finland's forests in recent years, though they are hard to spot, as their excellent senses of sight, smell and hearing enable them to keep well away from humans.



WHOOPER SWAN (LAULUJOUTSEN)

The graceful white whooper swan is Finland's national bird. Flocks of swans and cranes returning from their southerly wintering areas are welcomed by Finnish nature-lovers as heralding the long-awaited arrival of the spring.



SAIMAA RINGED SEAL

These rare inland seals have adapted to their freshwater home since they were cut off from the sea in Lake Saimaa – Finland’s largest lake – after the Ice Age. They are found only in Lake Saimaa. Thanks to conservation measures their numbers have recently risen to over 300, but they are still seriously endangered.



GREAT GREY OWL (LAPIN PÖLLÖ)

The concentric rings around the eyes of these huge northern owls make them look perpetually surprised. Great grey owls can get quite aggressive if anyone approaches their nest or their young owlets.



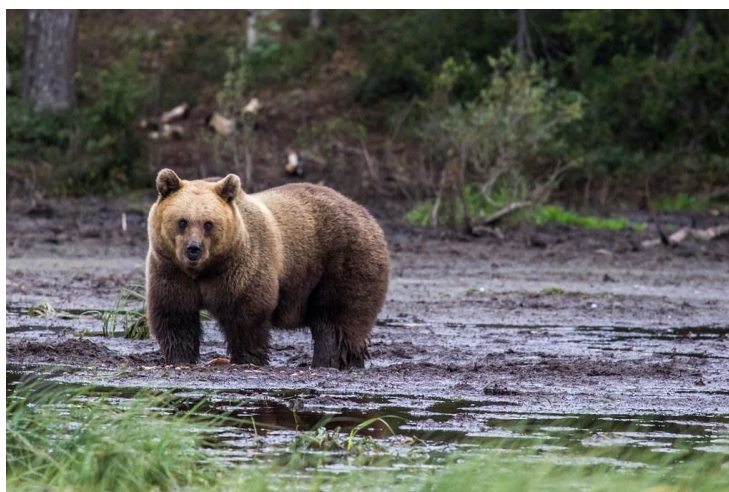
WOLF

Who's afraid of the big bad wolf? There's no need to fear an unexpected encounter with a wolf when walking in a Finnish forest, as wolves are scarce and do their best to avoid people. The best way to see a wild wolf is to take one of the specially organised overnight wildlife-watching excursions in Finland's eastern borderlands where wolves are most numerous.



BEAR

Finland is home to more than 1,500 bears, though they are only seldom seen, since they are shy of people. Several wildlife tour operators run excursions out into the forests of Eastern Finland where you can stay overnight in a hide and watch and photograph wild bears who come to feed on fishy or meaty scraps put out to attract them.



<https://www.visitfinland.com/article/finlands-wonderful-wildlife/>

Semi-domesticated reindeer roam freely through the forests and fells, foraging for lichens and other food.



Cloudberry grow widely in the bogs of Central and Northern Finland.



In a good year up to 50 million kilos of wild berries are picked in forests – about 10 kg per person. The most commonly picked berries are bilberries, lingonberries and cloudberry. Mushrooms are also picked widely.



Finland's national flower: lily-of-the-valley



Finland's national tree: silver birch



