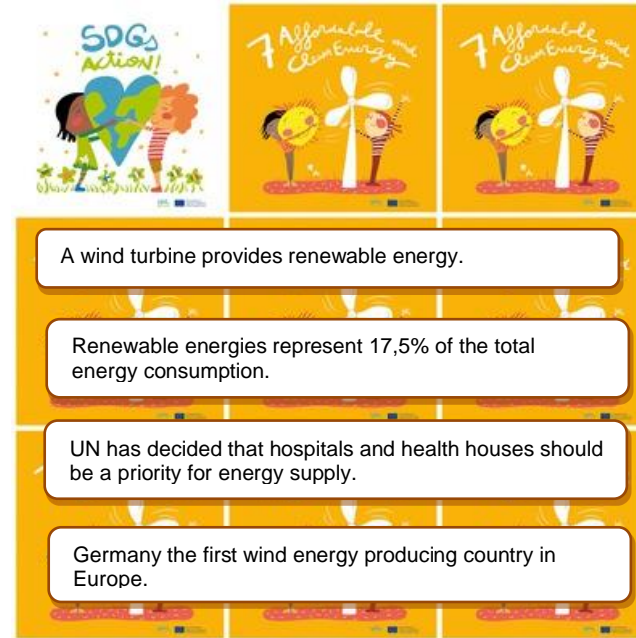


COVER: 8,5 CM X 8,5 CM

LETTER: Bradley Hand ITC



A wind turbine provides renewable energy.

Renewable energies represent 17,5% of the total energy consumption.

UN has decided that hospitals and health houses should be a priority for energy supply.

Germany the first wind energy producing country in Europe.

7. Affordable and Clean Energy

1. Does a wind turbine provide renewable energy ?

2. What is the percentage of renewable energies in the total energy consumption?

3. What type of establishment is one of the UN priorities for energy supply?

4. Which is the first wind energy producing country in Europe?

5. How many characters are there on the picture ?

6. What source of energy is drawn ?