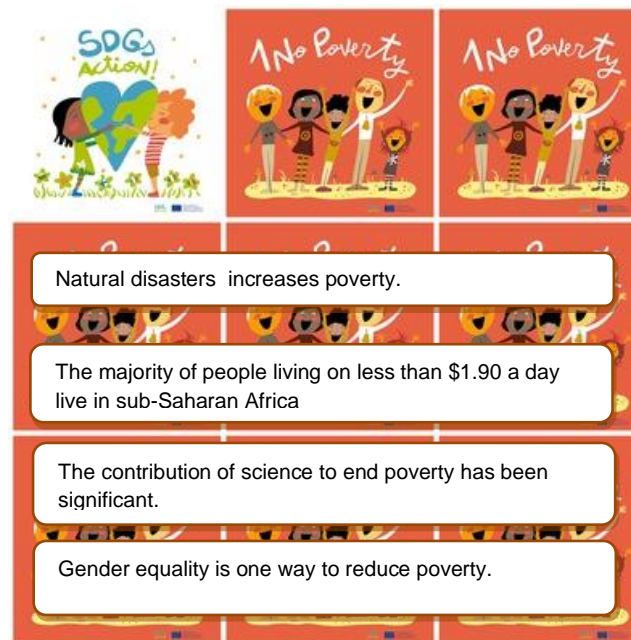


COVER: 8,5 CM X 8,5 CM

LETTER: Bradley Hand ITC



1. No Poverty

1. What increases poverty?

2. Where the majority of the poorest people live?

3. What can contribute to end the poverty?

4. Is Gender equality one of the ways to reduce poverty?

5. What color is the dress of the second in the line?

6. What color are the socks of the second in the line?