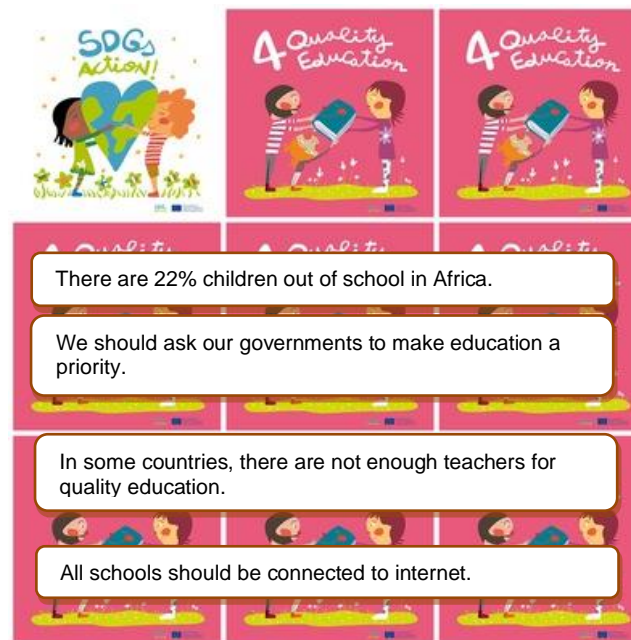


COVER: 8,5 CM X 8,5 CM

LETTER: Bradley Hand ITC



4. Quality Education

1. What is the percentage of out-of-school children in Africa ?
2. What should we ask to our governments ?
3. What is missing in some poor countries for quality education ?
4. Is it important to connect all schools to internet ?
5. What is the symbol of Quality Education ?
6. How many characters are there ?