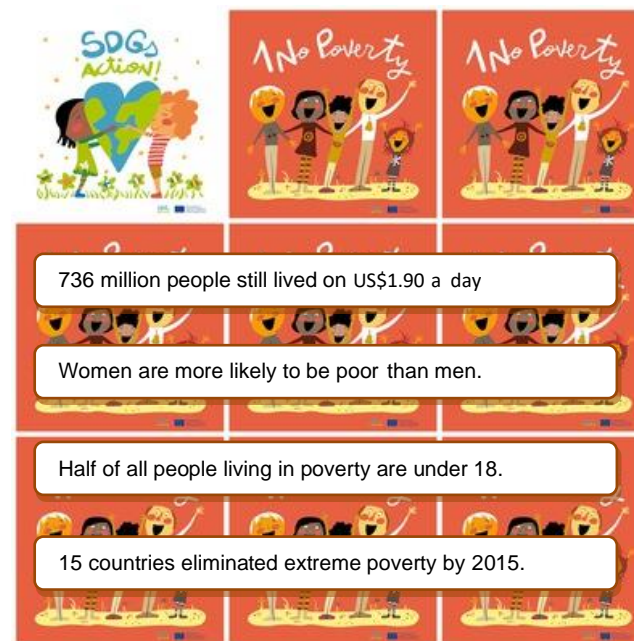


COVER: 8,5 CM X 8,5 CM

LETTER: Bradley Hand ITC



## 1. No Poverty

1. How many people live on \$ 1.90 a day?

2. Who is more often poor – women or men?

3. How old are half of the people who are poor?

4. How many countries eliminated extreme poverty?

5. How many people are painted on the logo?

6. What is the colour of the logo?