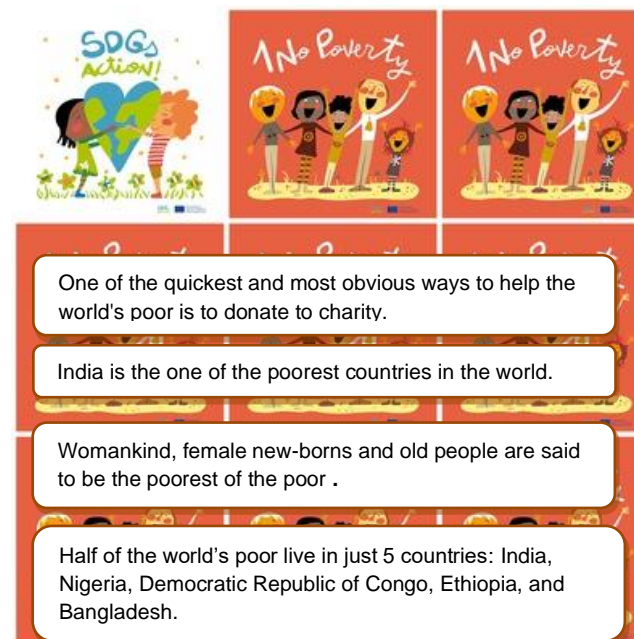


COVER: 8,5 CM X 8,5 CM

LETTER: Bradley Hand ITC



1. No Poverty

1. What is the quickest way to help the poverty?

2. What to provide for poor families?

3. What you can donate to help poor people?

4. In which 5 countries world's poor live in ?

5. How many people can you see in the logo?

6. What do people in the logo do with their hands?