

Mozart's Dice Game

Music by Chance

During the Classical period in music, many composers created musical dice games in which compositions were created by chance via the throw of the dice. The most successful of these compositional games was created by Mozart. In the abbreviated version presented here, students can create a short waltz with the throw of the dice or by picking random numbers.

Directions for playing *Mozart's Dice Game*

1. Print out this document.
2. Cut each page into six individual cards, following the guide-lines.
3. Each card has a letter (A-H) and a number (2-12) in the upper left corner. Arranged the cards into stacks by letter.
4. Roll a pair of dice. From the "A" pile, select the card which matches the number rolled.
5. Continue to roll the dice, selecting one card from each lettered stack.
6. Arrange the selected cards in alphabetical order.
7. Play your new composition.

Variation I

Instead of using dice, simply select one random card from each stack.

Variation II

Select any number of random cards, arrange them in any order you like, even up-side down!

Variation III

Using this document as a template, create your own dice game.

Have fun!

A - 2

Musical notation for A-2. Treble clef, 3/4 time signature. Notes: G4 (quarter), A4 (quarter), B4 (quarter). Bass clef, 3/4 time signature. Notes: G3 (quarter), A3 (quarter), B3 (quarter).

A - 3

Musical notation for A-3. Treble clef, 3/4 time signature. Notes: G4 (quarter), A4 (quarter), B4 (quarter). Bass clef, 3/4 time signature. Notes: G3 (quarter), A3 (quarter), B3 (quarter).

A - 4

Musical notation for A-4. Treble clef, 3/4 time signature. Notes: G4 (quarter), A4 (quarter), B4 (quarter), with a slur over the last two notes. Bass clef, 3/4 time signature. Notes: G3 (quarter), A3 (quarter), B3 (quarter).

A - 5

Musical notation for A-5. Treble clef, 3/4 time signature. Notes: G4 (quarter), A4 (quarter), B4 (quarter), C5 (quarter), B4 (quarter), A4 (quarter), G4 (quarter). Bass clef, 3/4 time signature. Notes: G3 (quarter), A3 (quarter), B3 (quarter).

A - 6

Musical notation for A-6. Treble clef, 3/4 time signature. Notes: G4 (quarter), A4 (quarter), B4 (quarter), C5 (quarter), B4 (quarter), A4 (quarter), G4 (quarter). Bass clef, 3/4 time signature. Notes: G3 (quarter), A3 (quarter), B3 (quarter).

A - 7

Musical notation for A-7. Treble clef, 3/4 time signature. Notes: G4 (quarter), A4 (quarter), B4 (quarter), C5 (quarter), B4 (quarter), A4 (quarter), G4 (quarter). Bass clef, 3/4 time signature. Notes: G3 (quarter), A3 (quarter), B3 (quarter).

A - 8

Musical notation for A-8. Treble clef, 3/4 time signature. The melody consists of a quarter note G4, a quarter note A4, a quarter note B4, and a quarter note C5. The bass clef part consists of a whole note chord G2-B2-D3.

A - 9

Musical notation for A-9. Treble clef, 3/4 time signature. The melody consists of a quarter note G4, a quarter note A4, a quarter note B4, and a quarter note C5. The bass clef part consists of a whole note chord G2-B2-D3.

A - 10

Musical notation for A-10. Treble clef, 3/4 time signature. The melody consists of a quarter note G4, a quarter note A4, and a quarter note B4. The bass clef part consists of a quarter note G2, a quarter note A2, a quarter note B2, and a quarter note C3.

A - 11

Musical notation for A-11. Treble clef, 3/4 time signature. The melody consists of a quarter note G4, a quarter note A4, and a quarter note B4. The bass clef part consists of a whole note chord G2-B2-D3.

A - 12

Musical notation for A-12. Treble clef, 3/4 time signature. The melody consists of a quarter note G4, a quarter note A4, and a quarter note B4. The bass clef part consists of a quarter note G2, a quarter note A2, and a quarter note B2.

B - 2

Musical notation for B-2. Treble clef, 3/4 time signature. The melody consists of a quarter note G4, a quarter note A4, and a quarter note B4. The bass clef part consists of a whole note chord G2-B2-D3.

B - 3

Musical notation for exercise B-3. The top staff contains three quarter notes: G4, A4, and B4. The bottom staff contains a whole note G3 and a fermata over a whole note G3.

B - 4

Musical notation for exercise B-4. The top staff contains three quarter notes: G4, A4, and B4. The bottom staff contains a whole note G3 and a fermata over a whole note G3.

B - 5

Musical notation for exercise B-5. The top staff contains a sequence of eighth notes: G4, A4, B4, A4, G4, F4, E4, D4. The bottom staff contains a whole note G3 and a fermata over a whole note G3.

B - 6

Musical notation for exercise B-6. The top staff contains a sequence of eighth notes: G4, A4, B4, A4, G4, F4, E4, D4. The bottom staff contains a whole note G3 and a fermata over a whole note G3.

B - 7

Musical notation for exercise B-7. The top staff contains a sequence of eighth notes: G4, A4, B4, A4, G4, F4, E4, D4. The bottom staff contains a whole note G3 and a fermata over a whole note G3.

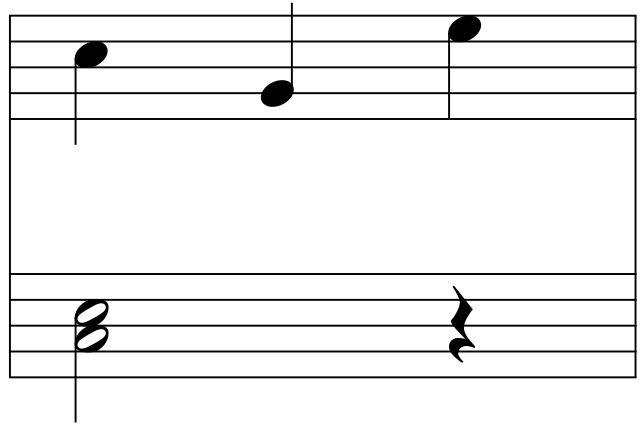
B - 8

Musical notation for exercise B-8. The top staff contains a sequence of eighth notes: G4, A4, B4, A4, G4, F4, E4, D4. The bottom staff contains a whole note G3 and a fermata over a whole note G3.

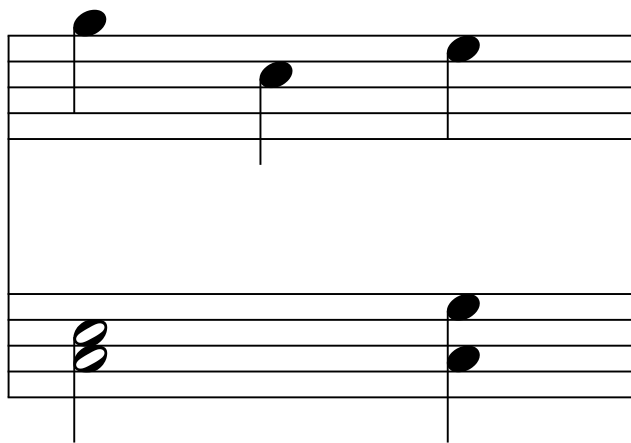
B - 9



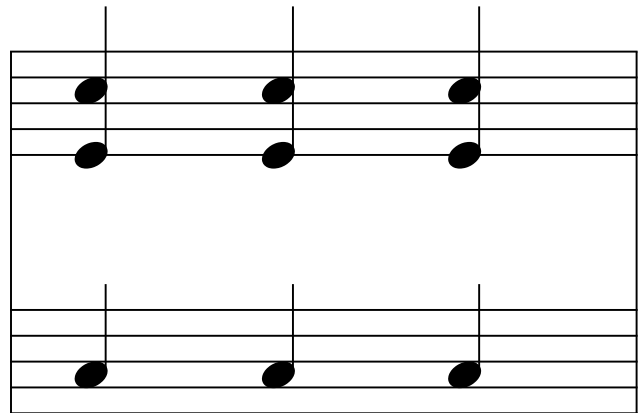
B - 10



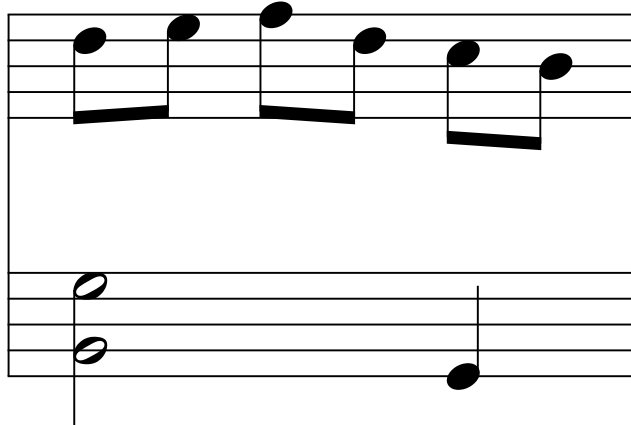
B - 11



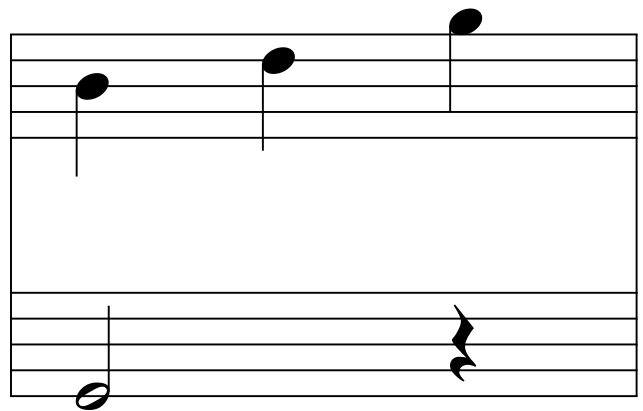
B - 12



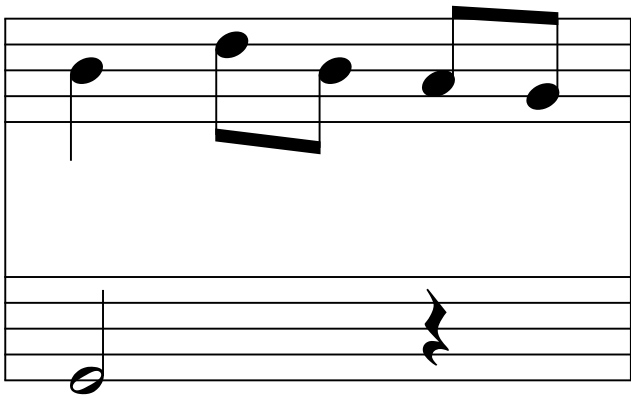
C - 2



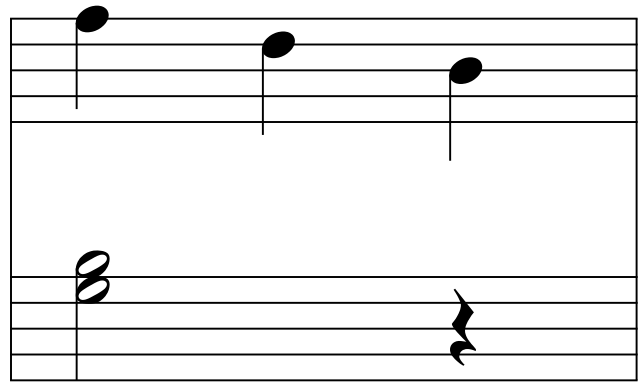
C - 3



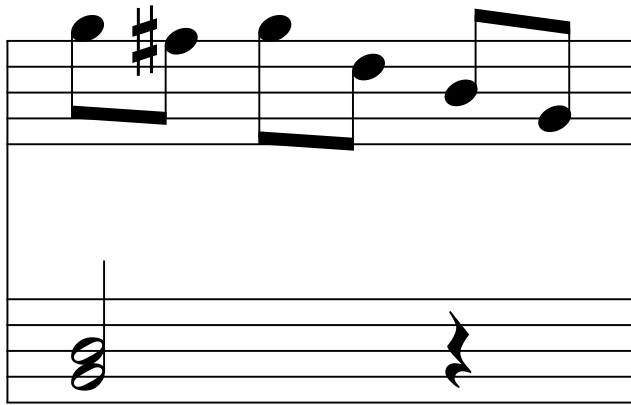
C - 4



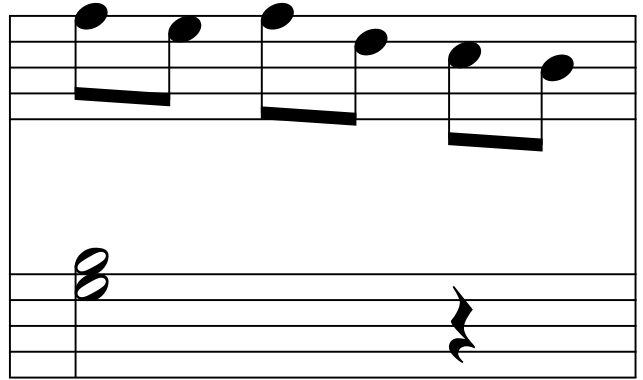
C - 5



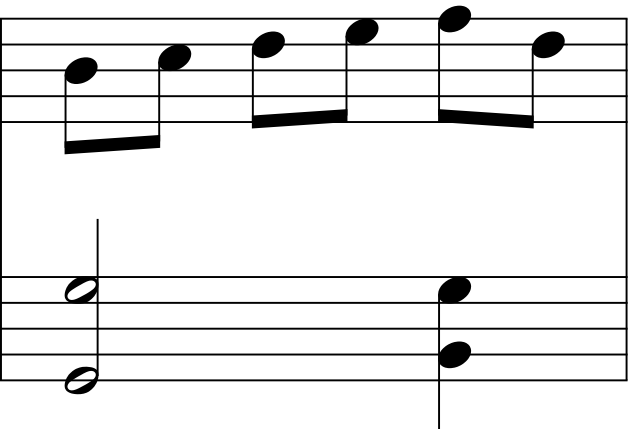
C - 6



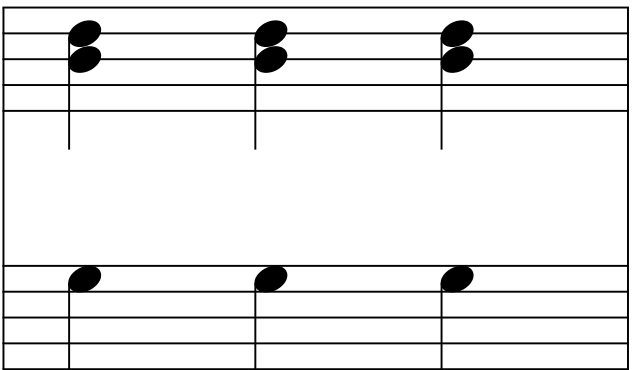
C - 7



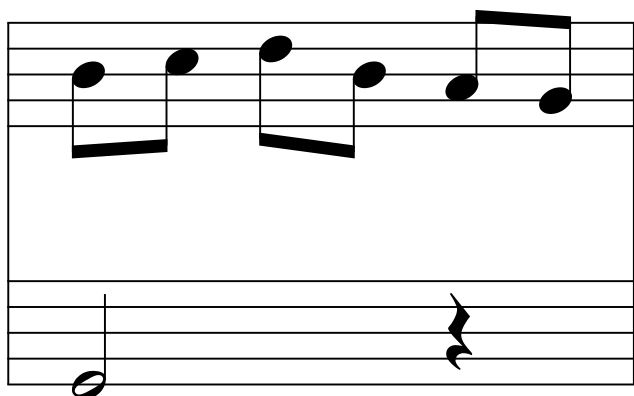
C - 8



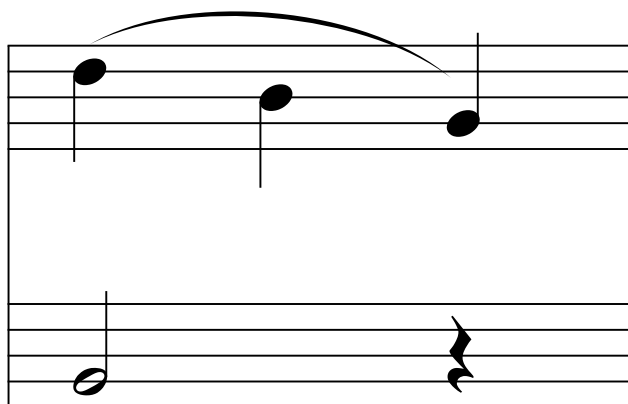
C - 9



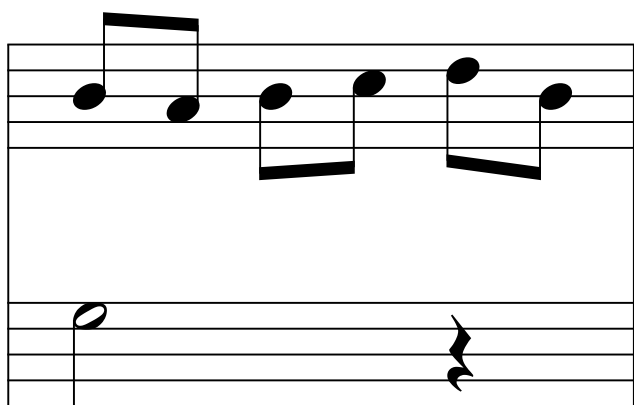
C - 10



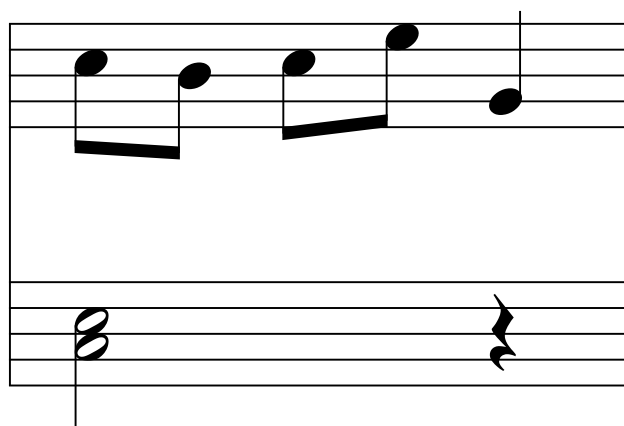
C - 11



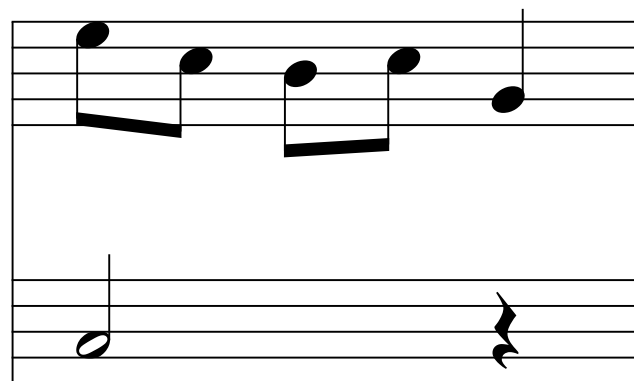
C - 12



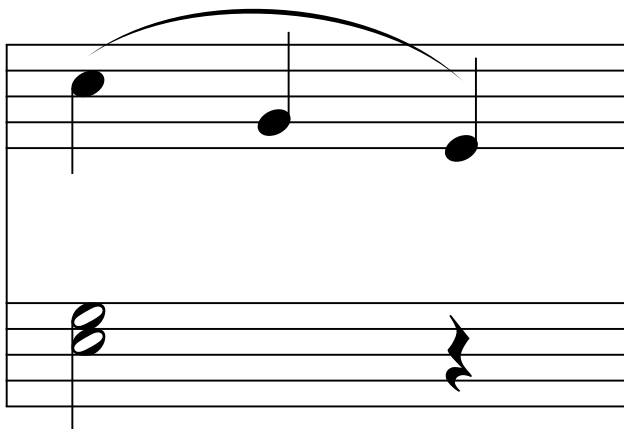
D - 2



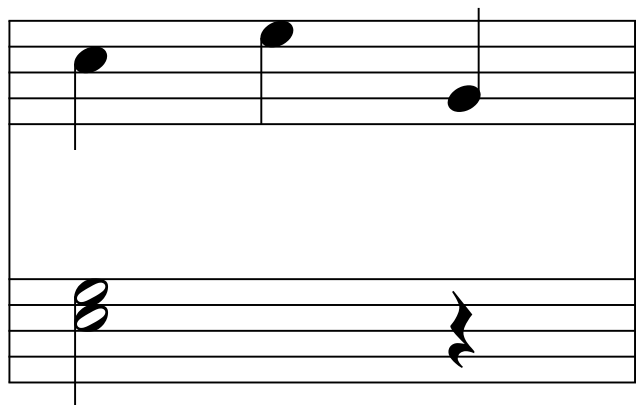
D - 3



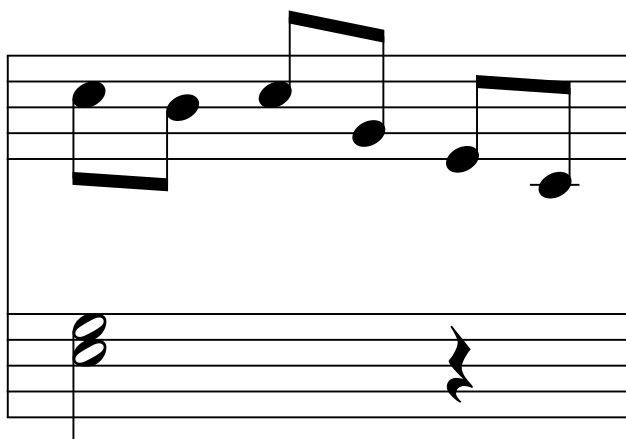
D - 4



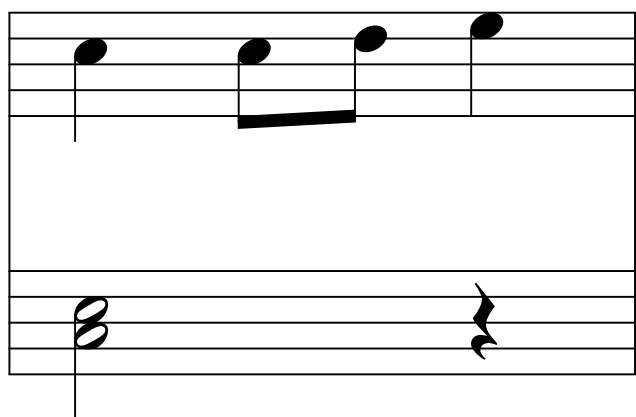
D - 5



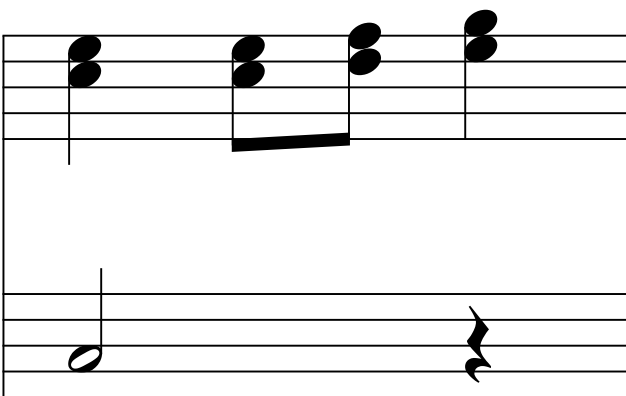
D - 6



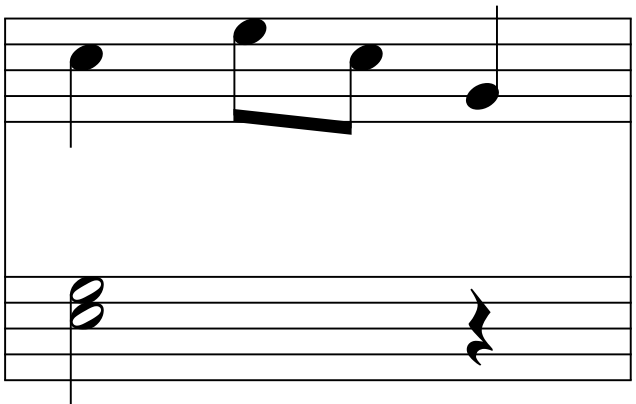
D - 7



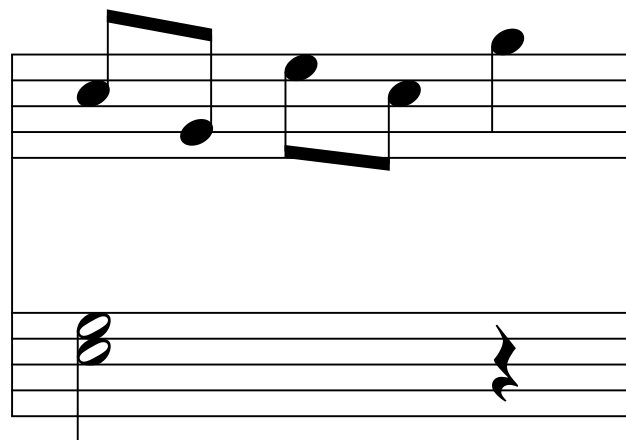
D - 8



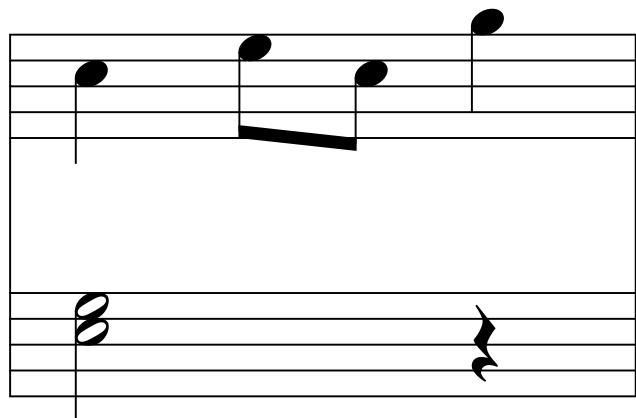
D - 9



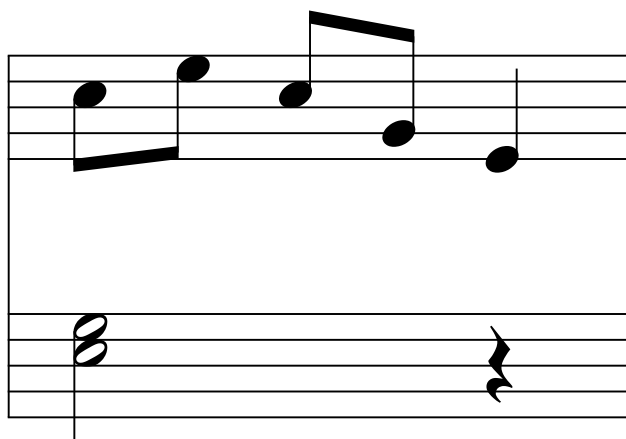
D - 10



D - 11



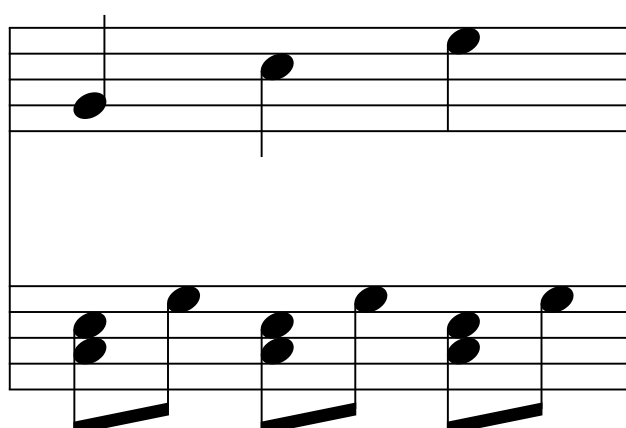
D - 12



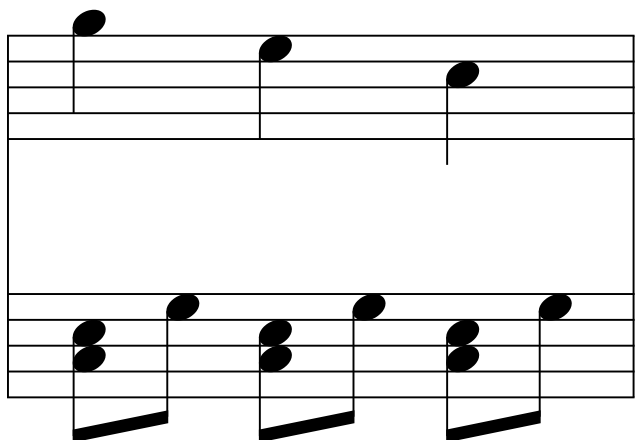
E - 2



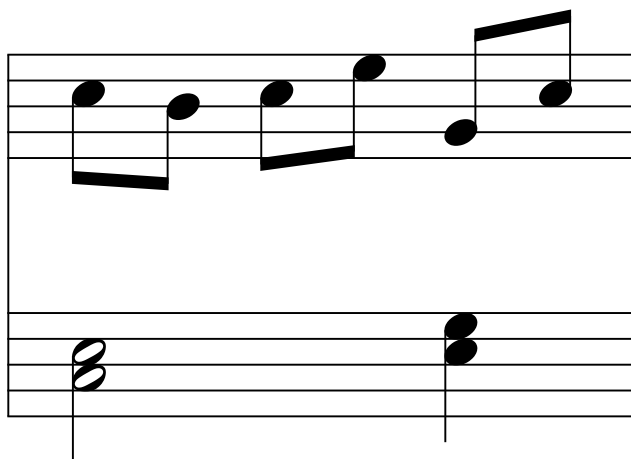
E - 3



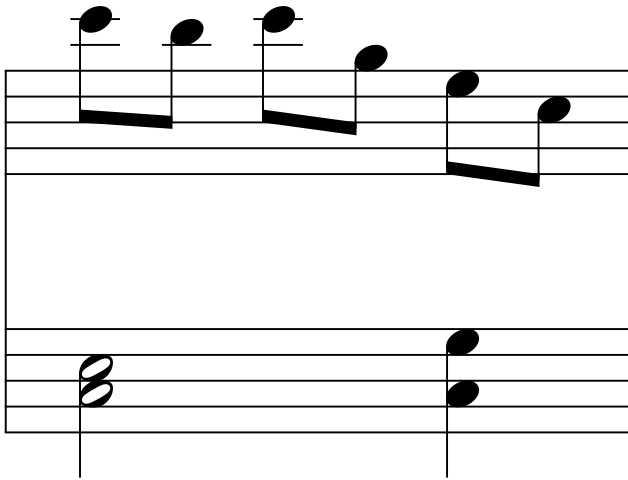
E - 4



E - 5



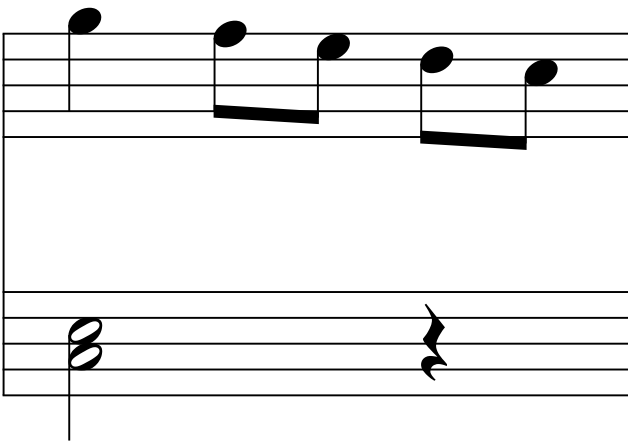
E - 6



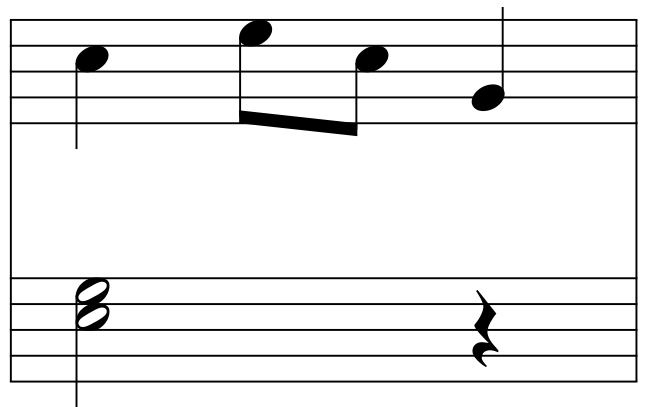
E - 7



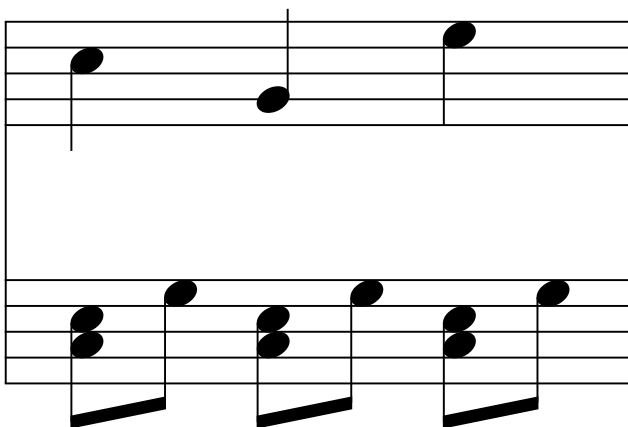
E - 8



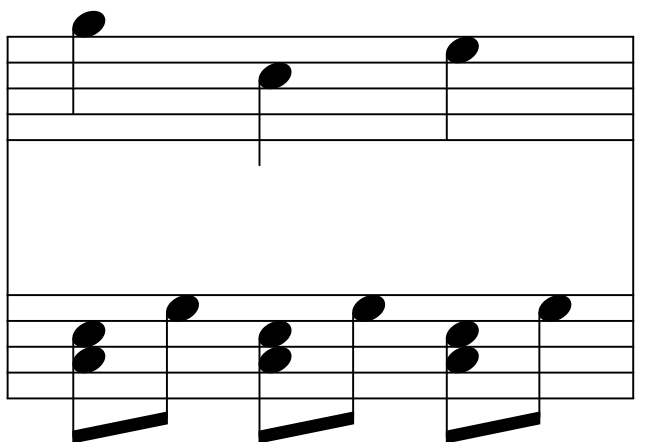
E - 9



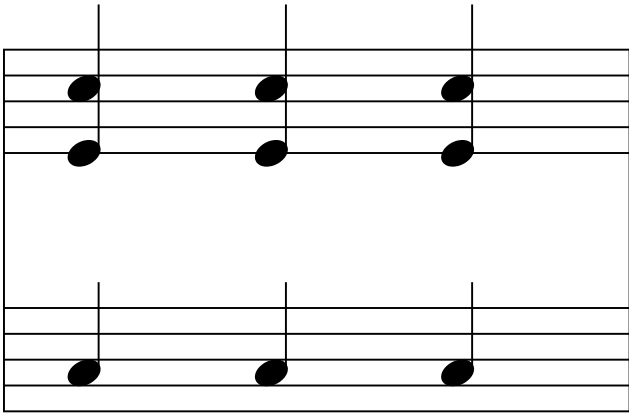
E - 10



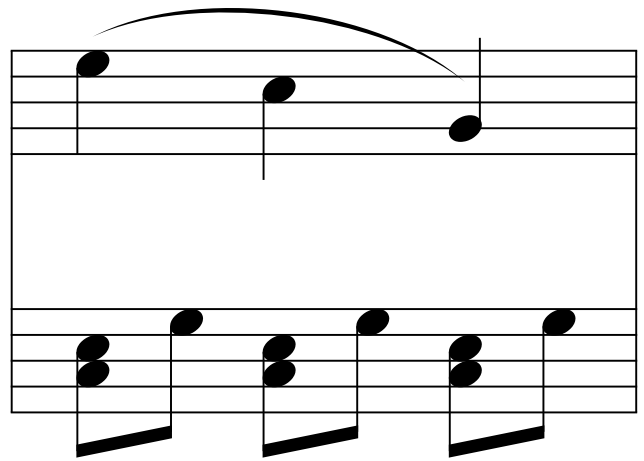
E - 11



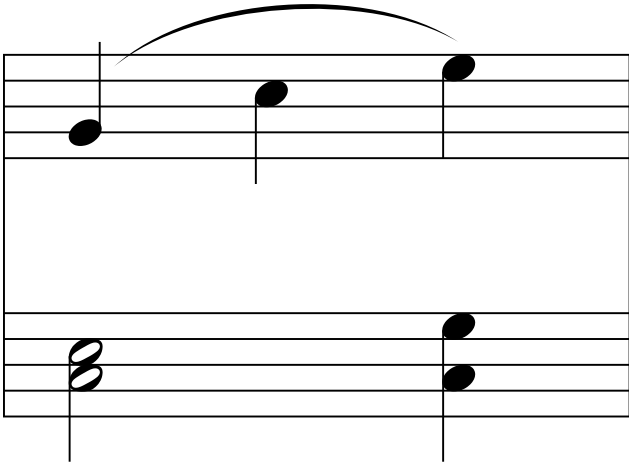
E - 12



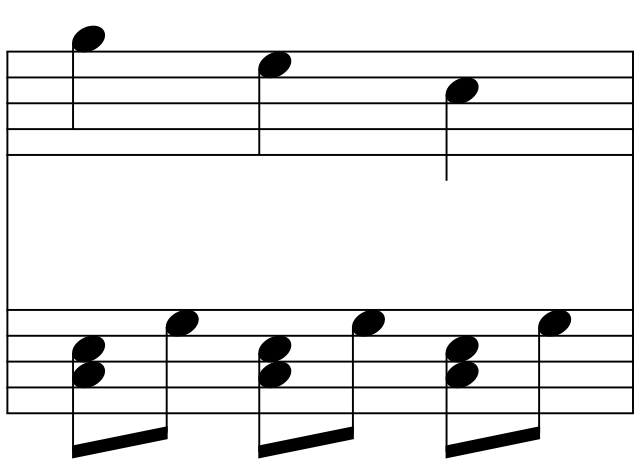
F - 2



F - 3



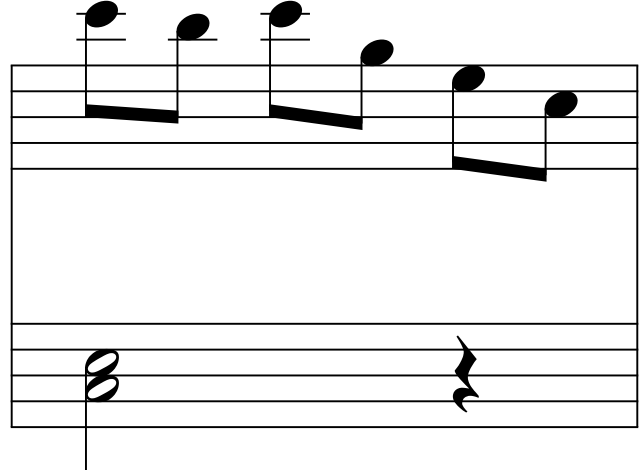
F - 4



F - 5



F - 6



F - 7

Musical notation for F-7. The upper staff contains a sequence of notes: G4, A4, B4, C5, D5, E5, F5. The lower staff contains a bass line with notes: F3, C4, F4, C4, F4, C4, F4, C4.

F - 8

Musical notation for F-8. The upper staff contains a sequence of notes: G4, A4, B4, C5, D5, E5, F5. The lower staff contains a bass line with notes: F3, C4, F4, C4, F4, C4, F4, C4.

F - 9

Musical notation for F-9. The upper staff contains a sequence of notes: G4, A4, B4, C5, D5, E5, F5. The lower staff contains a bass line with notes: F3, C4, F4, C4, F4, C4, F4, C4.

F - 10

Musical notation for F-10. The upper staff contains a sequence of notes: G4, A4, B4, C5, D5, E5, F5. The lower staff contains a bass line with notes: F3, C4, F4, C4, F4, C4, F4, C4.

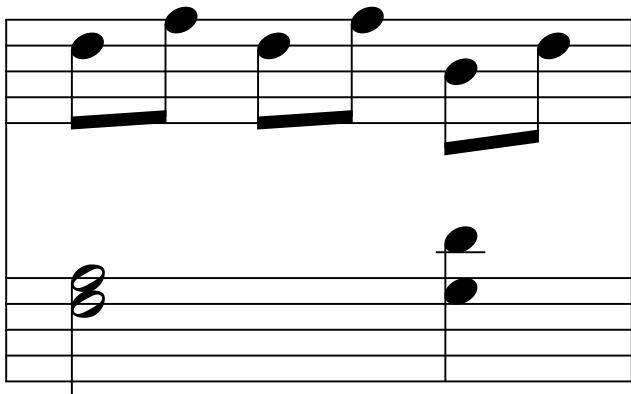
F - 11

Musical notation for F-11. The upper staff contains a sequence of notes: G4, A4, B4, C5, D5, E5, F5. The lower staff contains a bass line with notes: F3, C4, F4, C4, F4, C4, F4, C4.

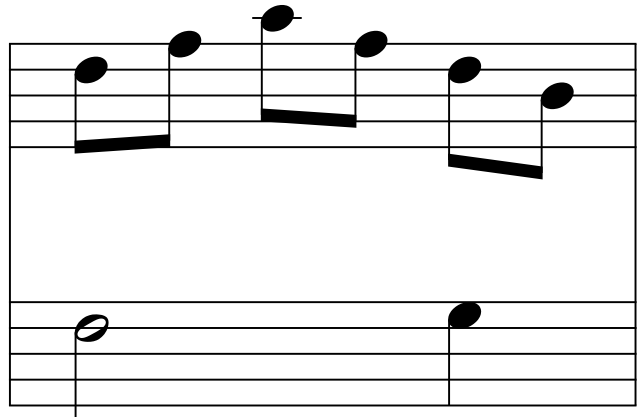
F - 12

Musical notation for F-12. The upper staff contains a sequence of notes: G4, A4, B4, C5, D5, E5, F5. The lower staff contains a bass line with notes: F3, C4, F4, C4, F4, C4, F4, C4.

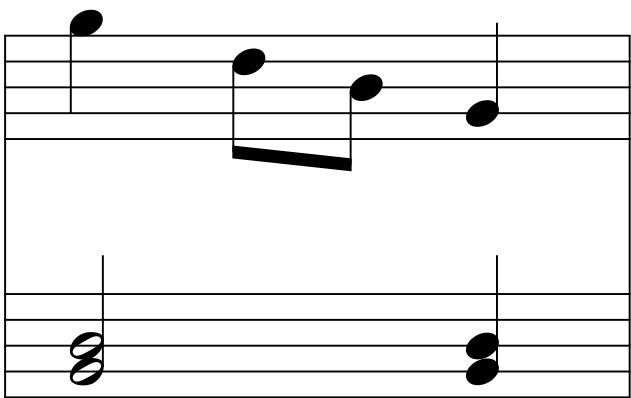
G - 2



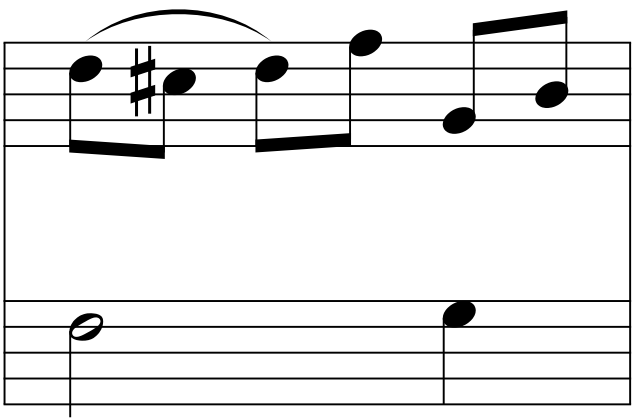
G - 3



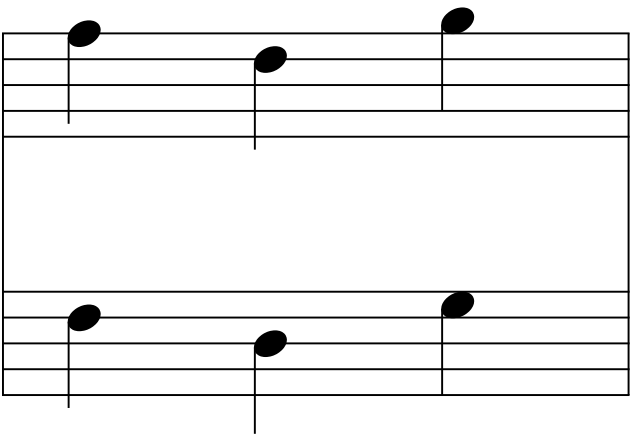
G - 4



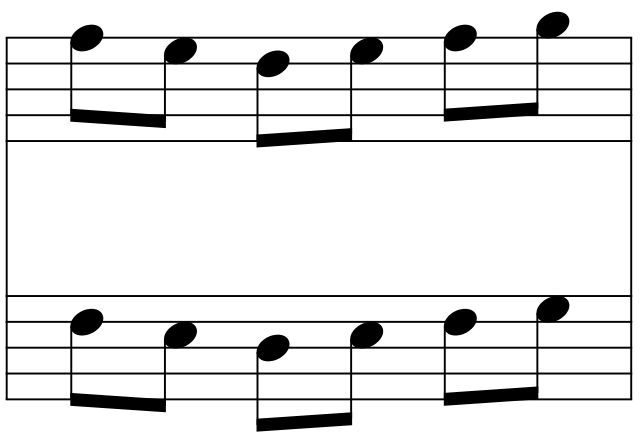
G - 5



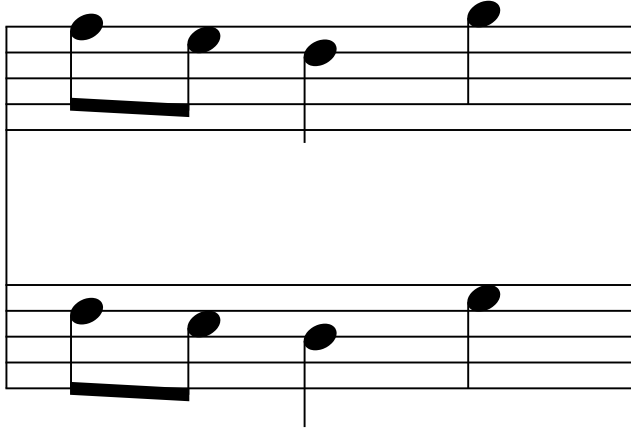
G - 6



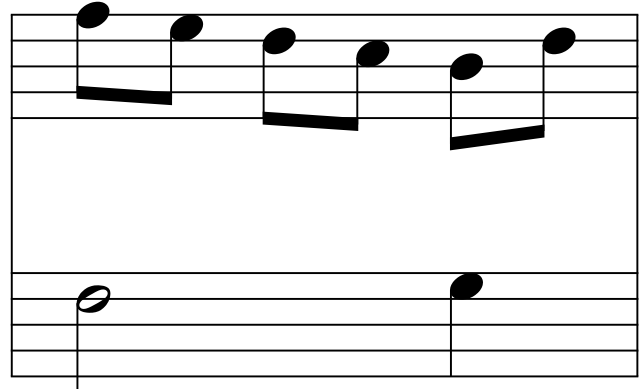
G - 7



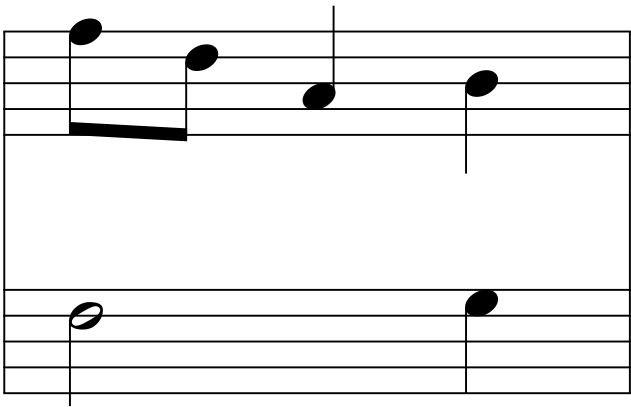
G - 8



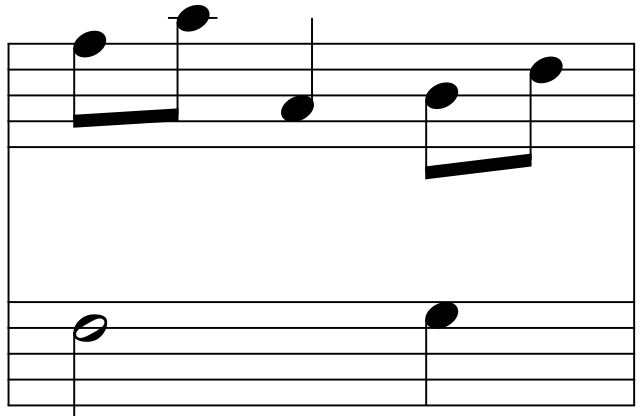
G - 9



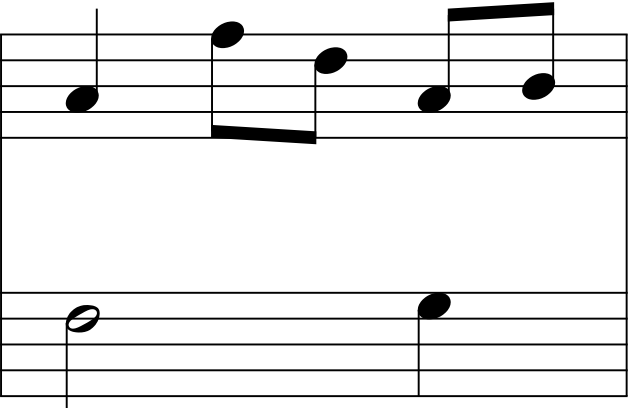
G - 10



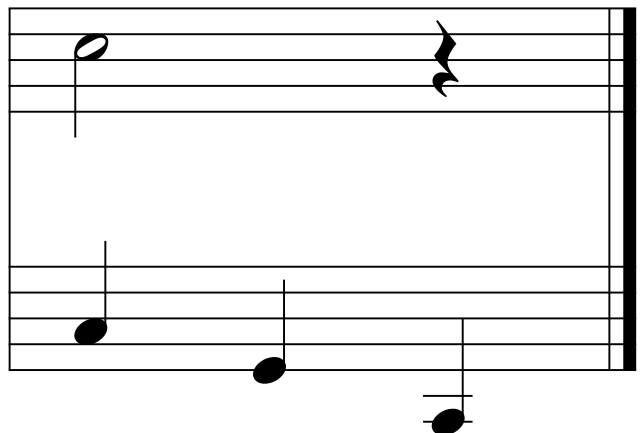
G - 11



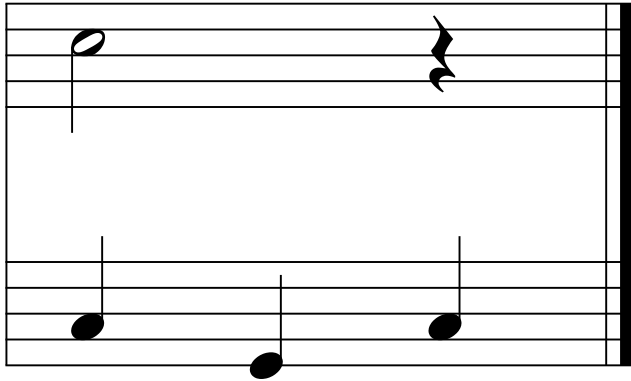
G - 12



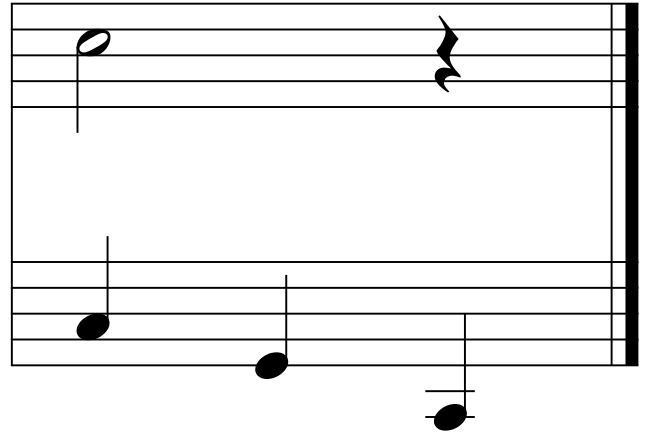
H - 2



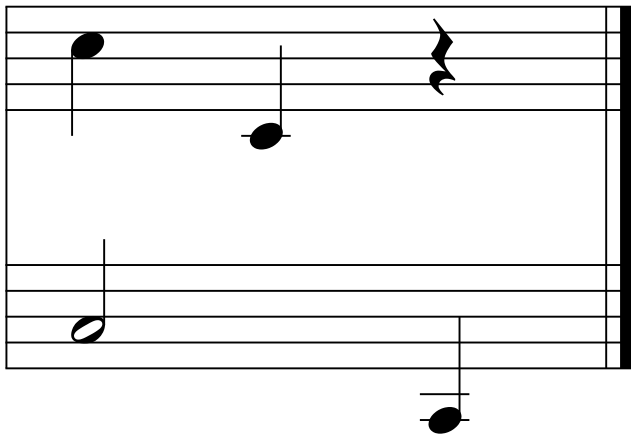
H - 3



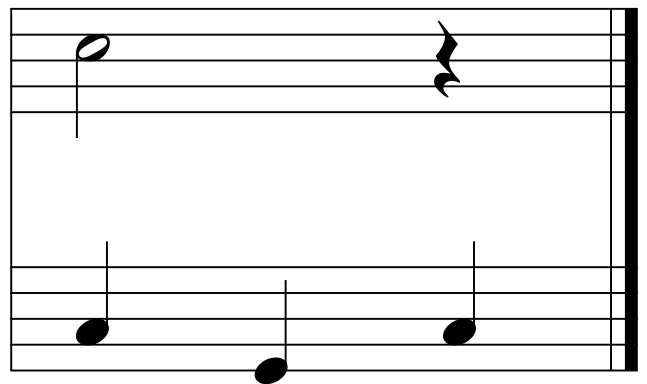
H - 4



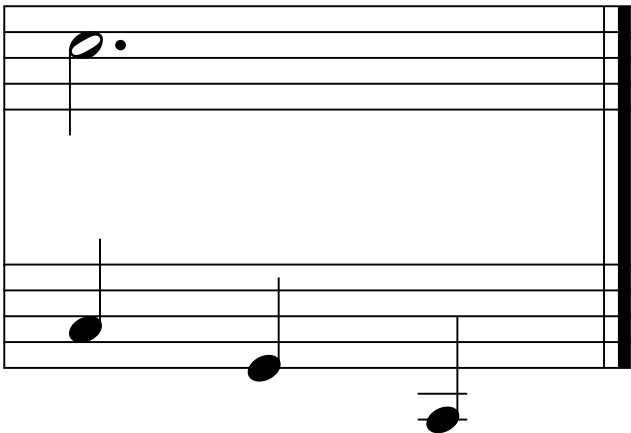
H - 5



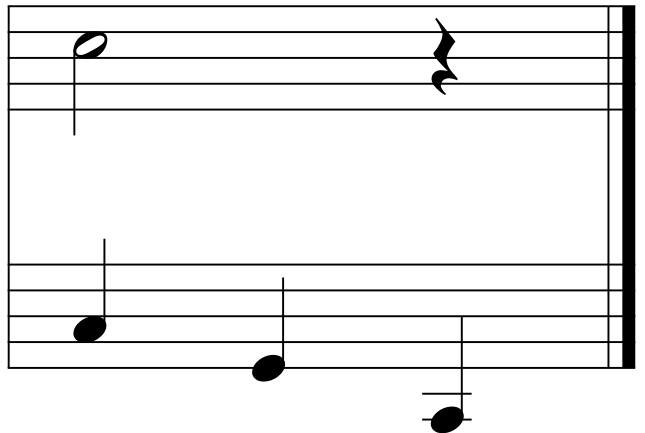
H - 6



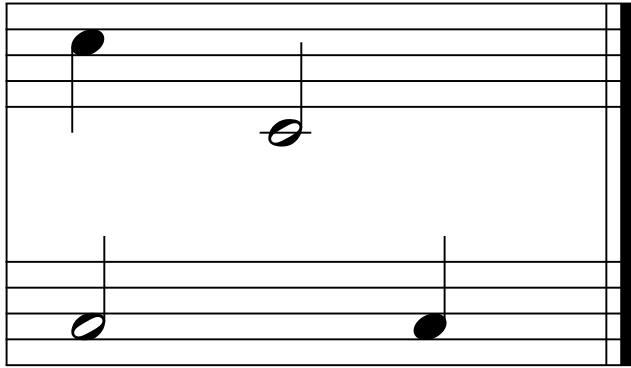
H - 7



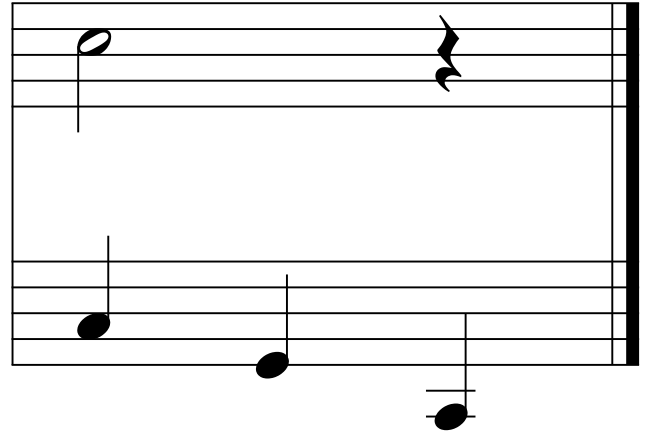
H - 8



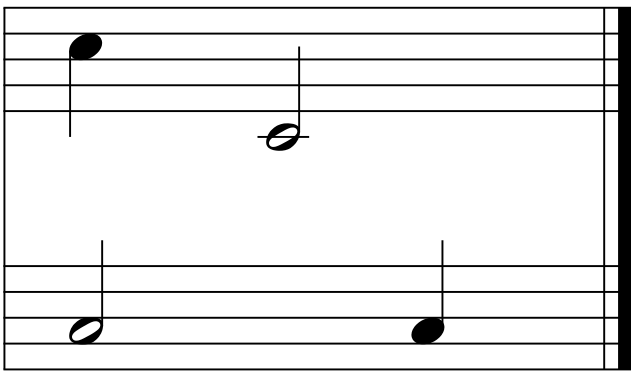
H - 9



H - 10



H - 11



H - 12

