



# Erasmus+

## **ERASMUS+ 2018-2020 MUSEUMHOLICS**

**VISITING LOCAL MUSEUMS  
BY ZESPÓŁ SZKÓŁ W RUDKACH, POLAND**

## VISITING LOCAL MUSEUMS



- In December students from Zespół Szkół in Rudki visited two museums in the Holy Cross Mountains - the **Museum of Ancient Metallurgy in Nowa Słupia** as well as the **Gingerbread Mansion in Huta Szklana**.



Source: <http://dymarki.pl/muzeum-starozytnego-hutnictwa/>

On 5 December students from Zespół Szkół in Rudki visited the **Museum of Ancient Metallurgy in Nowa Słupia.**

# THE MUSEUM OF ANCIENT METALLURGY IN NOWA SŁUPIA – A UNIQUE INSTITUTION IN POLAND



*Prof. Mieczysław Radwan*

Source: [http://www.biuletyn.agh.edu.pl/archiwum\\_bip/\\_2005/\\_139/07\\_139.html](http://www.biuletyn.agh.edu.pl/archiwum_bip/_2005/_139/07_139.html)



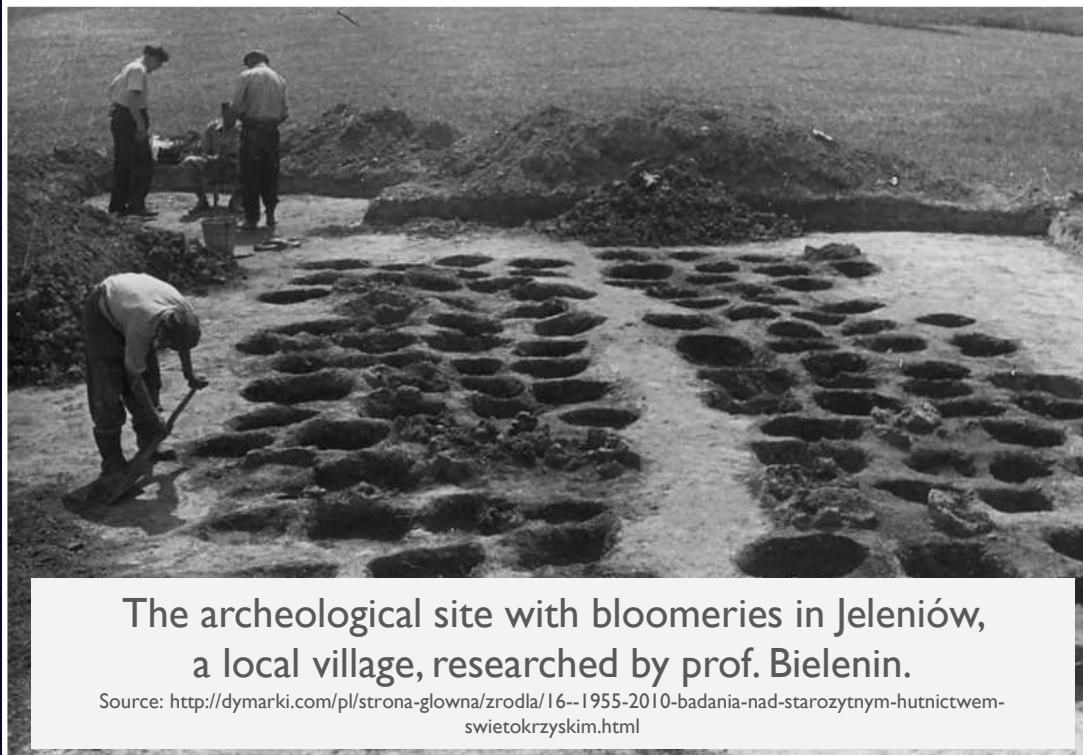
Muzeum Starożytnego Hutnictwa w Nowej Słupii – lata 60. XX wieku. Fot. Archiwum ŚSDP  
Obrazek 5 z 35

*The Museum of Ancient Metallurgy in the Holy Cross Mountains – a picture taken in 1960s. The museum was opened in 1960 following important discoveries of bloomeries.*

Source: <http://dymarki.com/pl/strona-glowna/zrodla/16--1955-2010-badania-nad-starozytnym-hutnictwem-swietokrzyskim.html>

- The Museum of Ancient Metallurgy in Nowa Słupia was named after professor Mieczysław Radwan, a metallurgist and historian who researched history of the Old Polish Industrial District including the history of metallurgy in the Świętokrzyskie region (the Holy Cross Mountains).

# THE MUSEUM OF ANCIENT METALLURGY IN NOWA SŁUPIA – A UNIQUE INSTITUTION IN POLAND

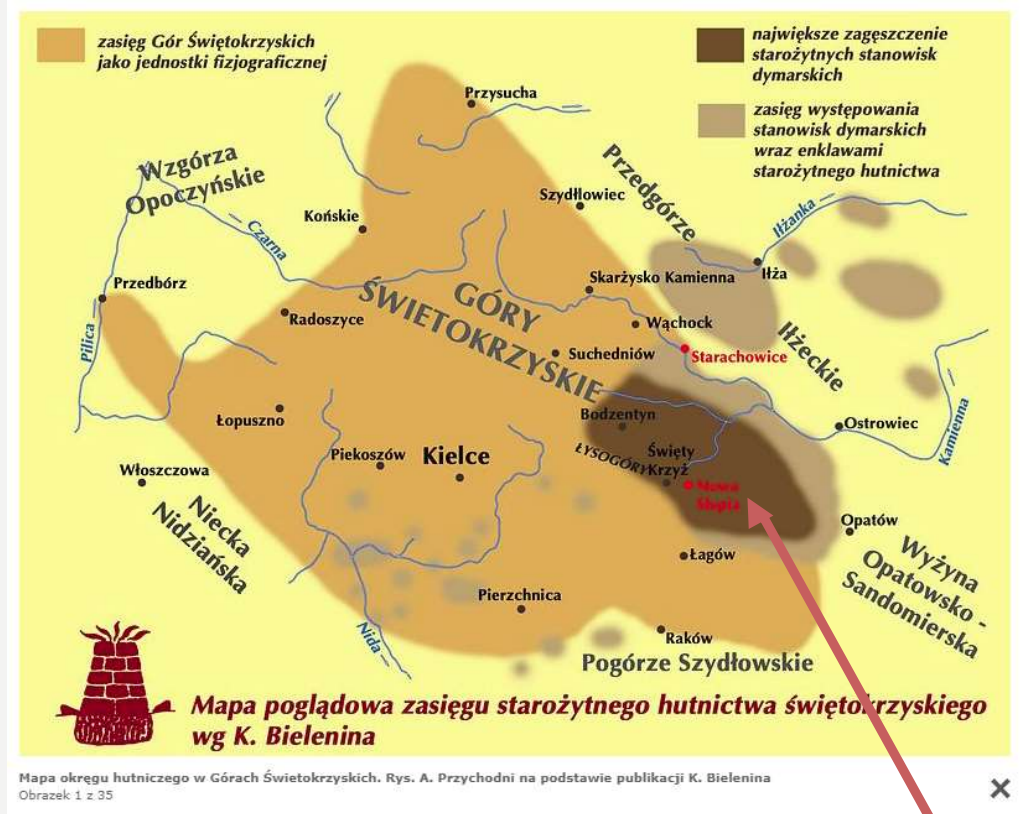


The archeological site with bloomeries in Jeleniów, a local village, researched by prof. Bielenin.

Source: <http://dymarki.com/pl/strona-glowna/zrodla/16--1955-2010-badania-nad-starozytnym-hutnictwem-swietokrzyskim.html>

Badania K. Bielenina na stanowisku dymarskim w Jeleniowie. Fot. Archiwum ŹSDP  
Obrazek 26 z 35

Professor Radwan also discovered „dymarki” (bloomeries = furnaces used for smelting iron) in the Holy Cross region and studied them with professor Kazimierz Bielenin.



The metallurgy centre in the Holy Cross Mountains with bloomery sites (the darkest patches include Nowa Słupia area).

Source: <http://dymarki.com/pl/strona-glowna/zrodla/16--1955-2010-badania-nad-starozytnym-hutnictwem-swietokrzyskim.html>

# THE MUSEUM OF ANCIENT METALLURGY IN NOWA SŁUPIA – A UNIQUE INSTITUTION IN POLAND

- The museum was created where the iron smelting remains were found.
- Those remains date back to the period from the 1st to the 3rd centuries.
- The current exhibition presents the history of examinations of the ancient metallurgy in the Holy Cross Mountains including the research methods and achieved results.
- The museum has become one of the most important sights in the Holy Cross Mountains.



Source: <http://dymarki.pl/muzeum-starozytnego-hutnictwa/>

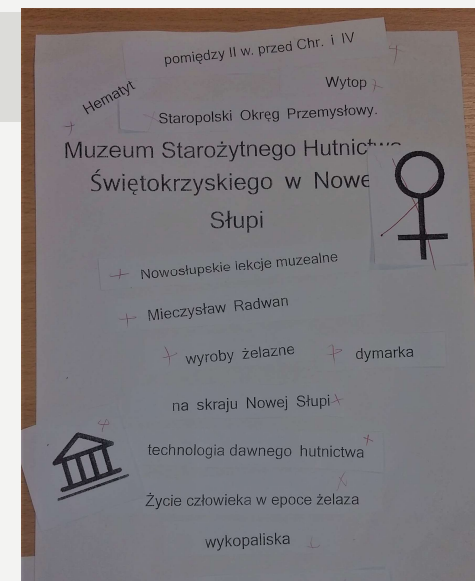
## BEFORE THE VISIT STUDENTS...



- learned about the museum and the history of the Old Polish Industrial District and watched PowerPoint presentation about the museum (during a Geography lesson).



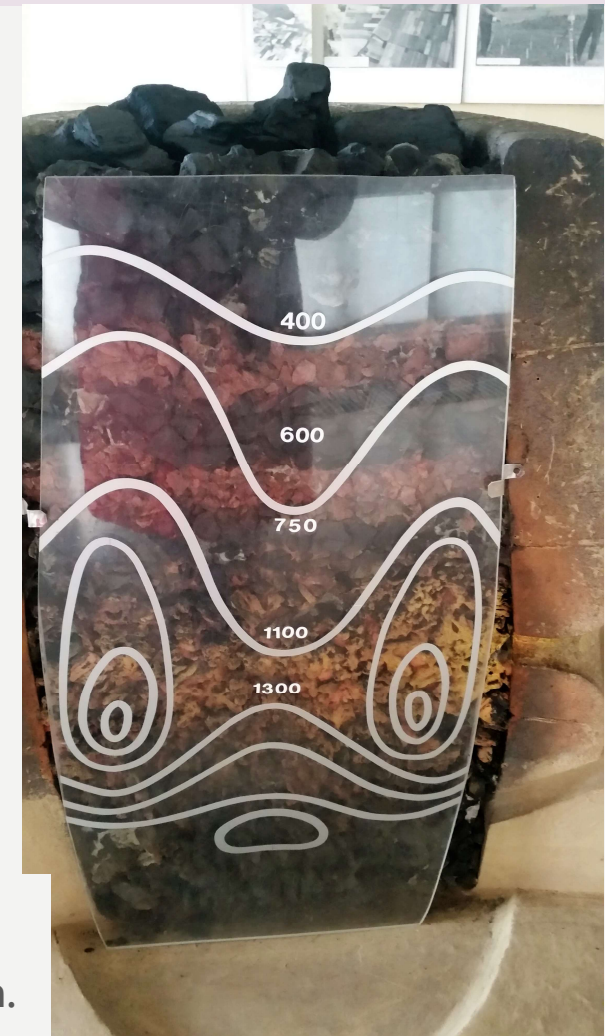
## BEFORE THE VISIT THEY ALSO...



- learned about the rules that they must respect during the visit,
- were informed about the plan of the trip and activities.

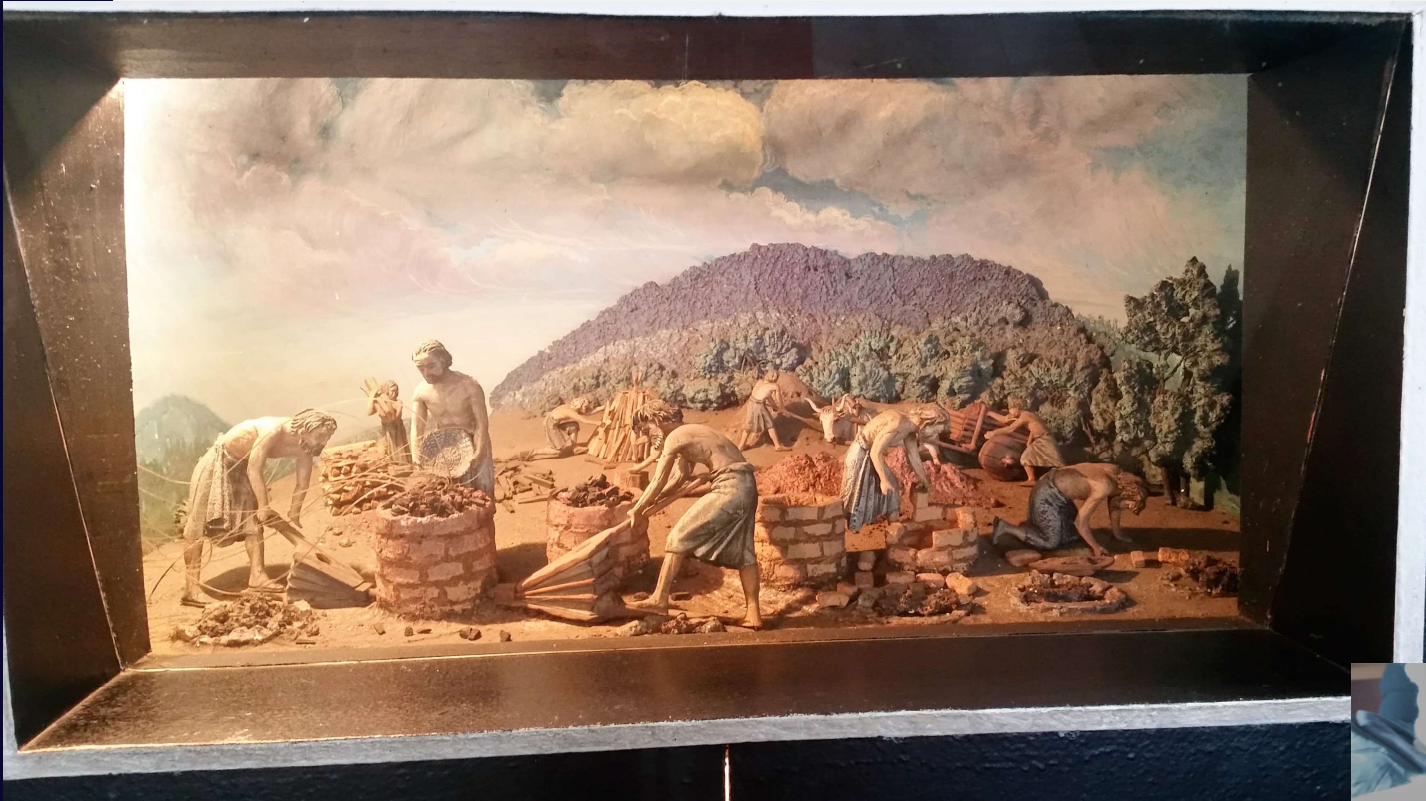


## DURING THE VISIT STUDENTS...



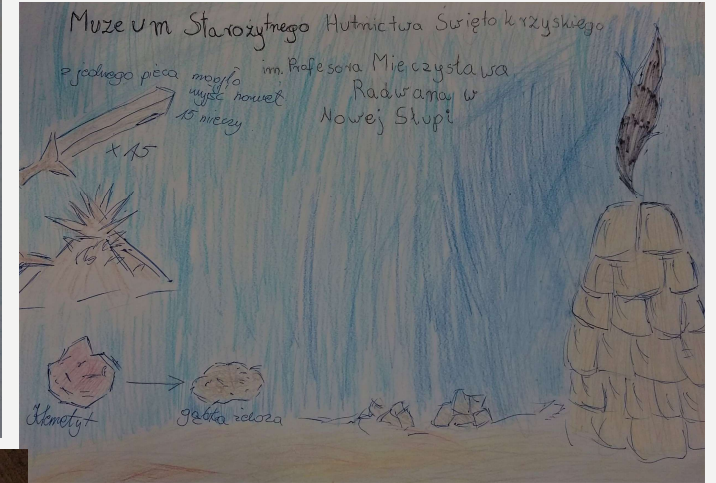
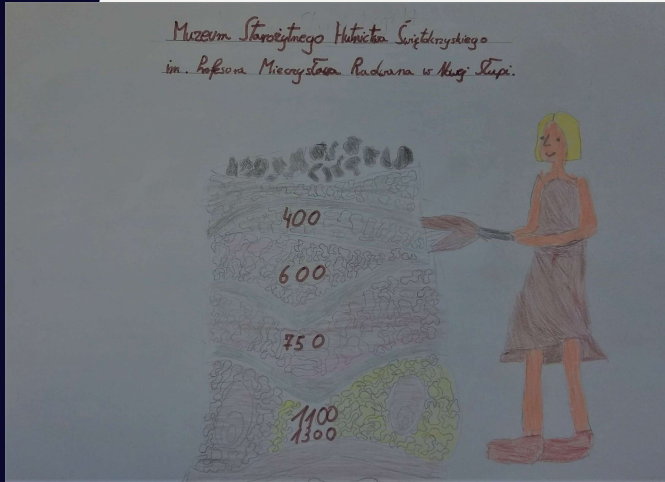
- watch the exhibition and listen carefully to the guide,
- are informed by the museum guide on techniques used for smelting iron.

## DURING THE VISIT THEY ALSO...

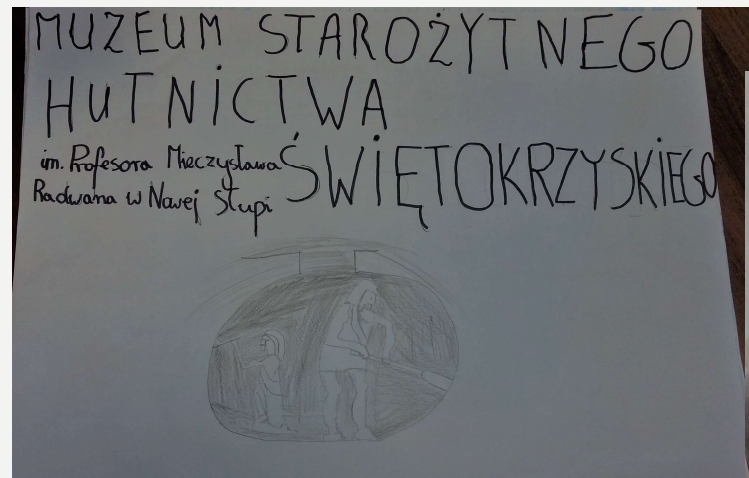


- write down the information about a chosen exhibit,
- are asked to take pictures at the museum,
- take part in a workshop.

## AFTER THE VISIT STUDENTS...



- worked in groups,
- drew or painted posters connected with the objects seen in the museum,
- prepared a display of these posters with a short description in the school hall.





# Erasmus+

- More information about our museum visits at Museumholics TwinSpace:

<https://twinspace.etwinning.net/78007/home>

- More information about ancient metallurgy in the Holy Cross Mountains and the museum at:

<https://www.nowaslupia.pl/kategorie/muzeum>

<http://dymarki.com/pl/strona-glowna/dymarki-swietokrzyskie/historia,,9.html>

## THE GINGERBREAD MANSION



„The Gingerbread Mansion” – a museum of traditional cuisine and cooking situated in the south east of Poland in the Świętokrzyskie (Holy Cross) Mountains.

The exhibition of ancient pots, spoons, pans and knives. The workshop of traditional baking .

## BEFORE THE VISIT STUDENTS...



- learnt about the rules we must follow when visiting a museum,
- explored the book on the museum to discover what they are going to see there and get ready for the workshop they are going to take part in,
- prepared the plan of the visit.

## DURING THE VISIT STUDENTS...



- participated in a guided tour of the museum,
- were instructed by the guide on the techniques of traditional baking.

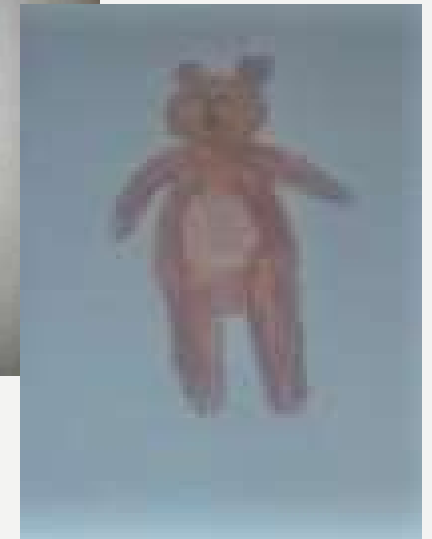
## DURING THE VISIT STUDENTS...



- took part in a workshop where they prepare their own gingerbread which they can take home
- they visit the museum shop and buy souvenirs

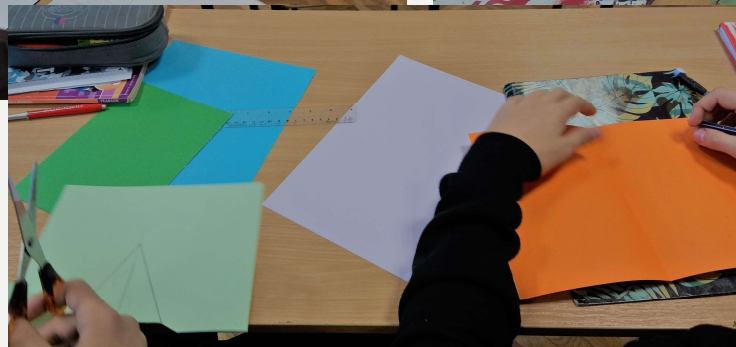


## AFTER THE VISIT STUDENTS...



- exchanged their opinions on what they saw,
- prepared posters about their visit which included objects they saw in the museum.

# DECEMBER: LET'S EXCHANGE CHRISTMAS CARDS!



- In Decemebr partnering schools agreed to exchange parcels of Christmas cards. Students worked on them at school.

## DECEMBER: LET'S EXCHANGE CHRISTMAS CARDS!



When the cards were ready, we sent 5 parcels with 5 Christmas cards in each – to Italy, Lithuania, Romania, Spain and Turkey.

## DECEMBER: LET'S EXCHANGE CHRISTMAS CARDS!



- We received the cards from the partnering countries, too – students presenting Christmas cards from Italy, Lithuania, Romania, Spain and Turkey.

## DECEMBER: LET'S EXCHANGE CHRISTMAS CARDS!

