

First Dreams Assessment

I
HAVE
A DREAM



First Dreams Assessment

Did you complete the first tasks you started in September-October?

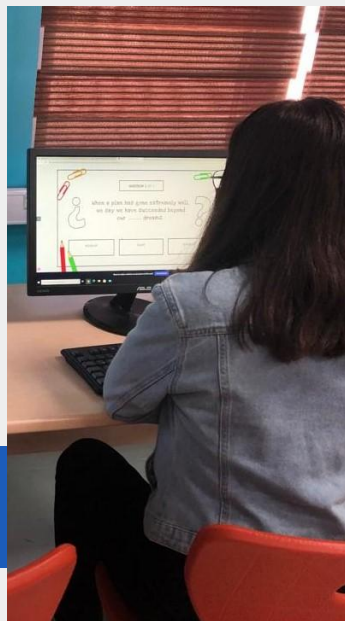
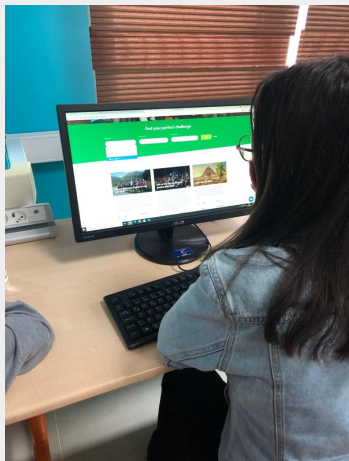
Delete the ✓ if you didn't succeed.



- I know how to make a copy of a slide/presentation from a template
- I can add a picture with a transparent background and add a shape
- I have updated my profile (avatar and profile)
- I have shared my dream challenge

- I have chosen a dream from a partner and posted a message in the forum
- I have shared my locker
- I have opened a partners' locker and posted a message in the forum.
- Now I know how to "reply" and "quote"
- I have checked if they have sent me a new message in the forum

EVIDENCES



Did you save any screenshot of your work?

Right click the picture icon and select "Replace Image"

EVIDENCES



Right click this
placeholder and select
'Replace Image'



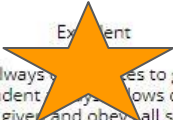


Right click this
placeholder and select
'Replace Image'

Use the next slide to assess yourself and explain it by writing a paragraph.

Place the star in the right box.

First Dreams-1

	Excellent 4 pts	Good 3 pts	Fair 2 pts	Poor 1 pts
Participation	<p>Excellent</p>  <p>Student participates in most class activities all the time with few reminders.</p>	<p>Good</p> <p>Good</p> <p>Student participates in most class activities all the time with few reminders.</p>	<p>Fair</p> <p>Fair</p> <p>Student participates in class activities around 50% of the time and is in constant need of reminders to participate.</p>	<p>Poor</p> <p>Poor</p> <p>Student rarely participates in class activities and needs to be constantly reminded to participate.</p>
Engagement & Effort	<p>Excellent</p> <p>Excellent</p> <p>Student is always fully engaged and tries their best. Always on task and never needs reminding about anything. Student completes work to an excellent quality level.</p>	<p>Good</p>  <p>Good</p> <p>Student is usually engaged and tries their best most of the time. Always on task and rarely needs reminding about anything. Student completes work to a high quality level.</p>	<p>Fair</p> <p>Fair</p> <p>Student needs frequent reminders to remain engaged and to work to the best of their ability. Student completes acceptable work to a reasonable quality level.</p>	<p>Poor</p> <p>Poor</p> <p>Student constantly needs frequent reminders to remain on task. Student rarely completes work to a reasonable quality level.</p>
Cooperation/Contribution/Safety	<p>Excellent</p>  <p>Excellent</p> <p>Student always cooperates with group tasks actively. Student always follows directions the first time given and obeys all safety rules.</p>	<p>Good</p> <p>Good</p> <p>Student usually contributes to group tasks actively. Student had to be reminded to follow directions and safety rules.</p>	<p>Fair</p> <p>Fair</p> <p>Student doesn't contribute to group task very actively. Student needed to be reminded to follow directions safely.</p>	<p>Poor</p> <p>Poor</p> <p>Student doesn't contribute to group tasks at all. Student needs to be reminded frequently to follow directions during the class.</p>

Move the star to the right box!!!!

Reflection & Badge

How confident do you feel using TwinSpace? What can you say about your participation, engagement and effort, contribution and cooperation? Think about the rubric in the previous page.

At the beginning I had difficulties. But I really liked eTwinning. I am so happy to do something in order to improve my English and communicate with students from other countries.



Get and download your badge [HERE](#)