

Our monument in Italy

Dalrio Giulia
Tavani Michele
Imad fardous
Antra Marwa

2.D
Italy

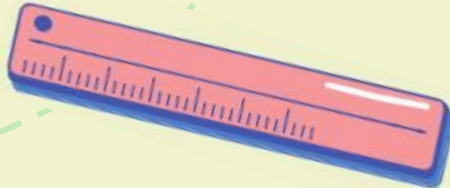
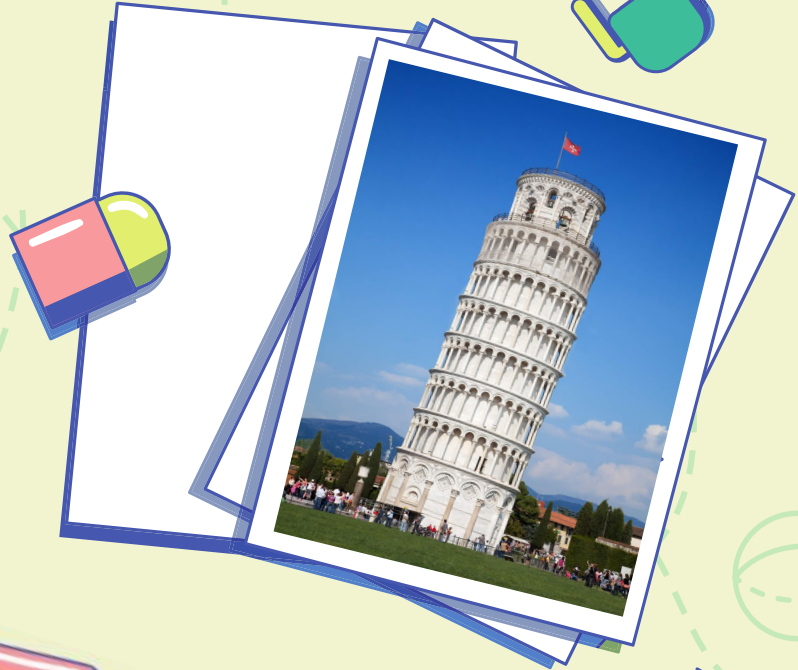


The Pisa's tower



The Pisa's tower

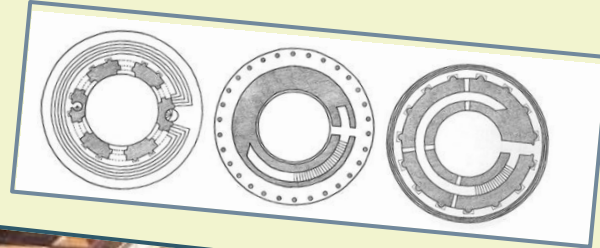
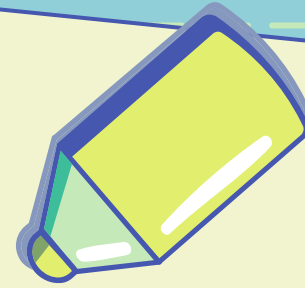
The tower of Pisa is the bell tower of the cathedral of Santa Maria Assunta, in the famous Piazza del Duomo this monument is famous for its characteristic slope, the symbol of Pisa. It is a separate bell tower 57 meters high built between the twelfth and fourteenth centuries. To build the bell tower of the cathedral of Santa Maria Assunta was, most likely, Bonanno Pisano, sculptor and bronze worker.



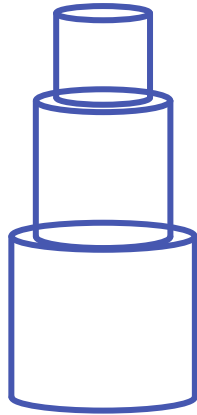
The flat figures in the tower



The tower of Pisa is made up of 3 concentric circles because it was built on three floors and seen from the front it can also look like a rectangle.



The solid figures



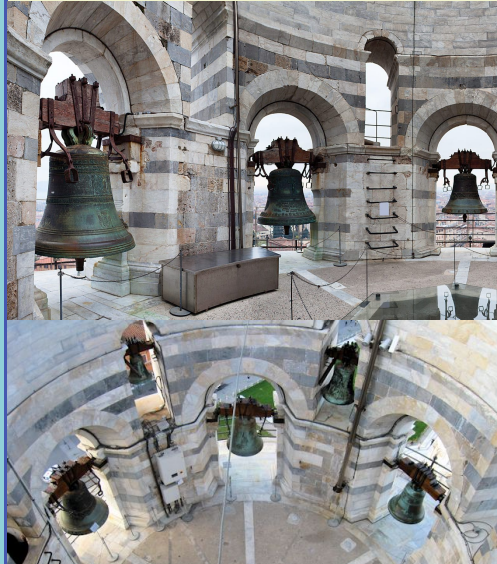
The structure of the monument is quite particular because it consists of two concentric cylinders connected to each other by an internal spiral staircase that leads up to the upper cell.

3 curiosities about the tower of Pisa

why does the tower hang?



the bell tower



the other towers





Thanks to the vision

By Giulia D. Michele T. Imad F. and Marwa. A

