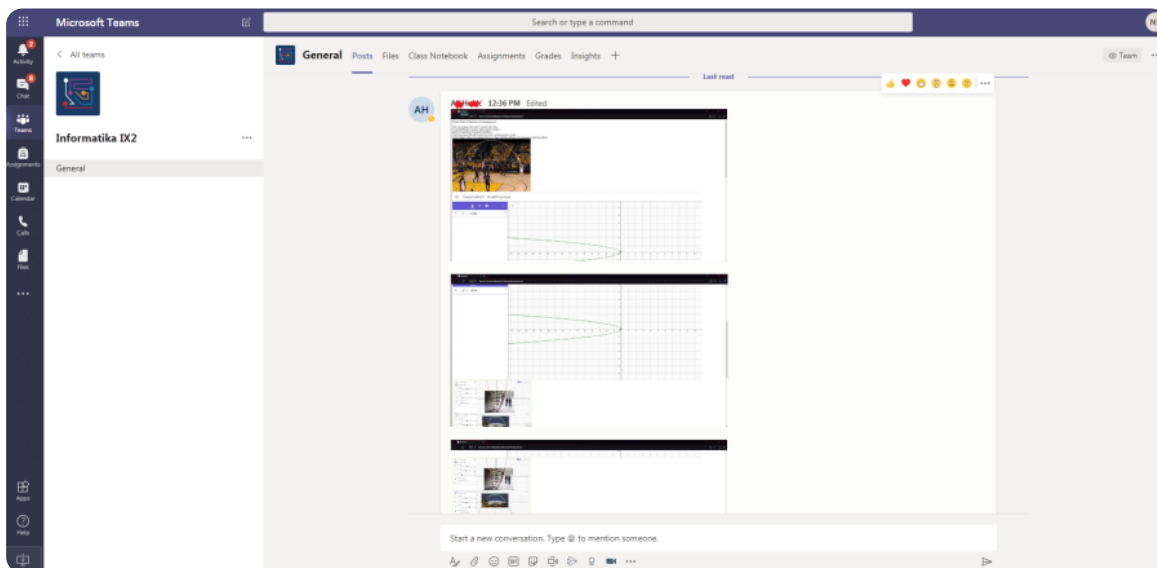
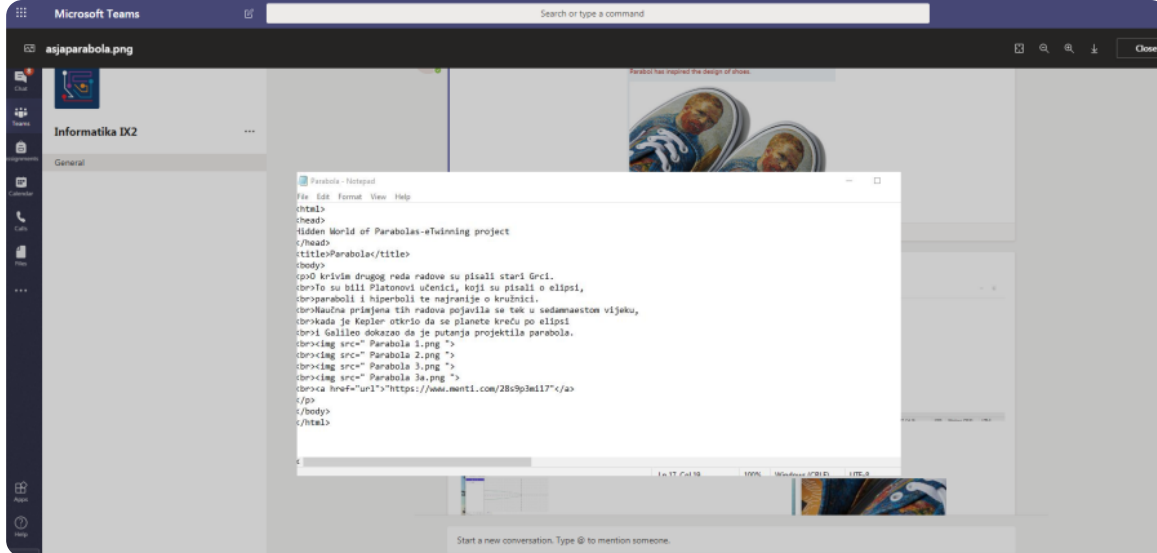
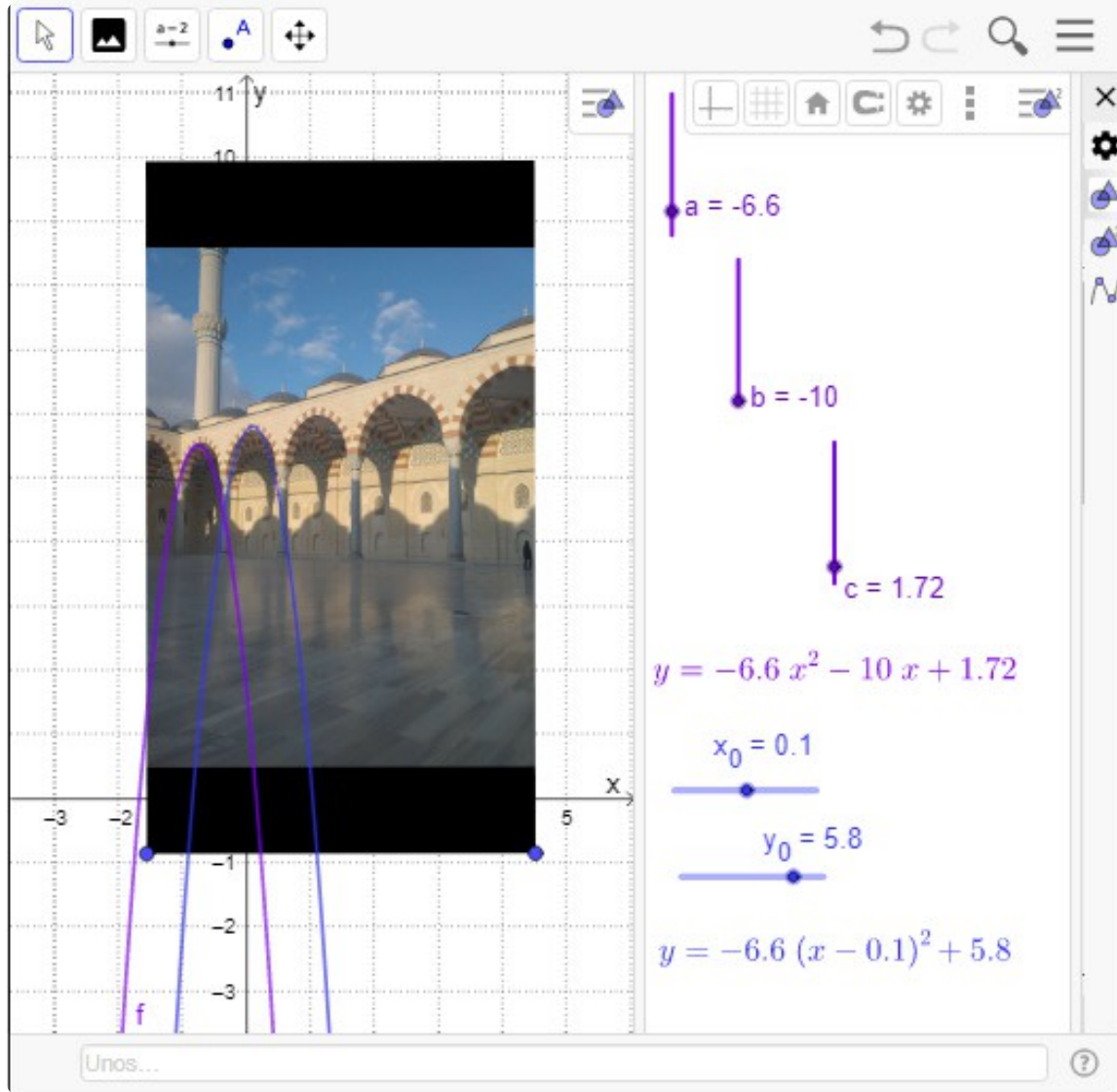


Primena Geogebra apleta Usage of Geogebra applet

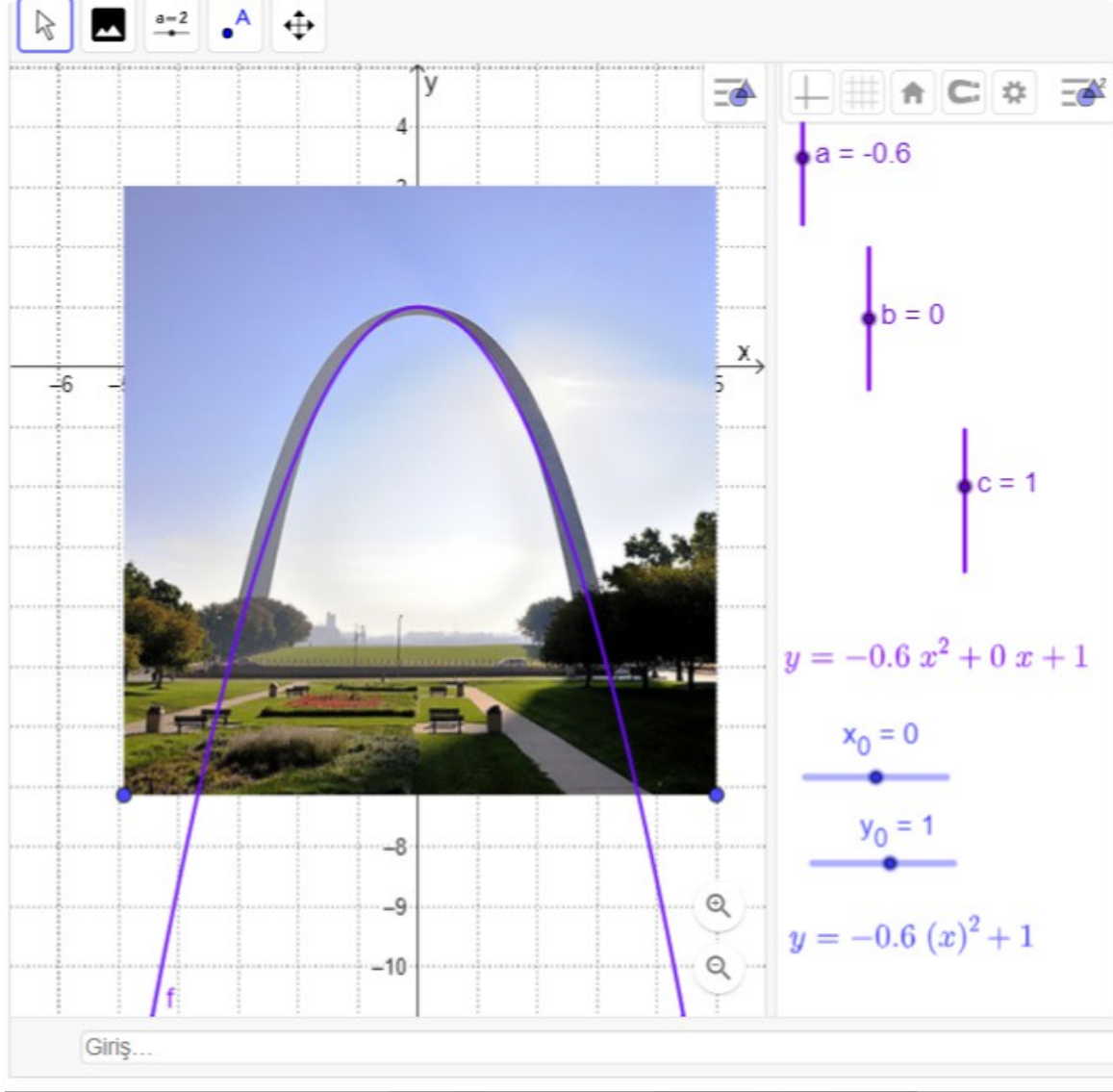
New fountain in our town, full of parabolas!



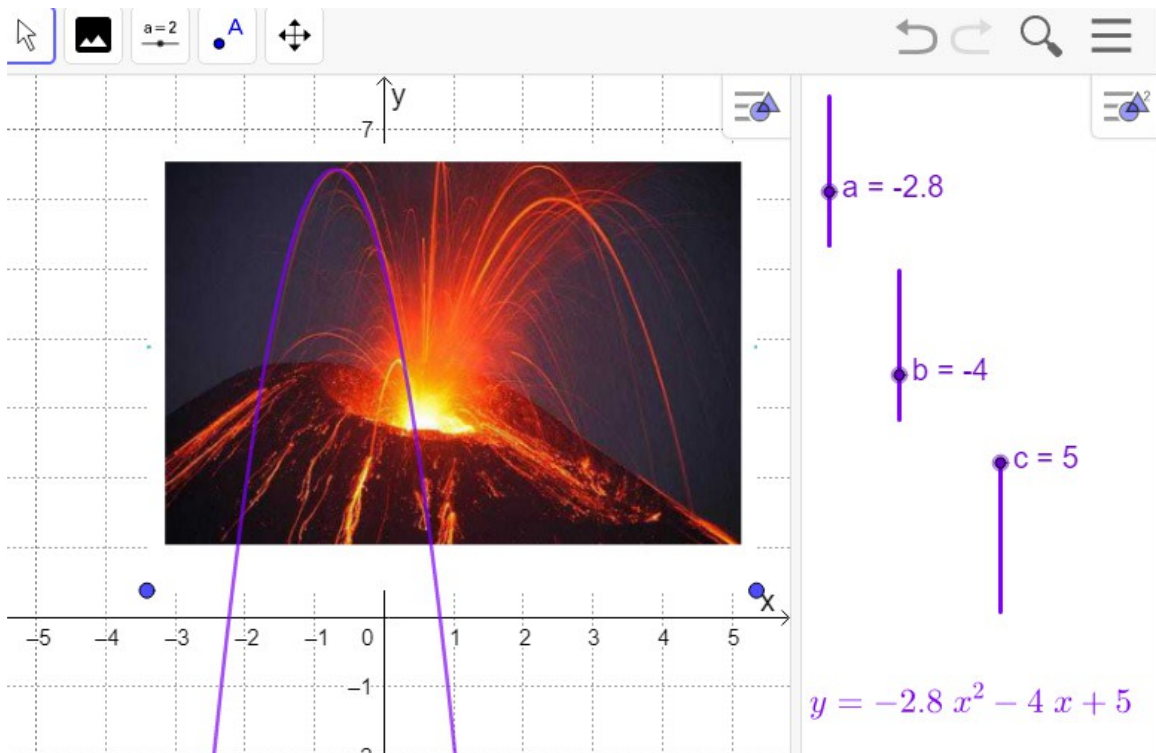




SUDE Y/Şahin Şen Girls Anatolian Imam Hatip High School



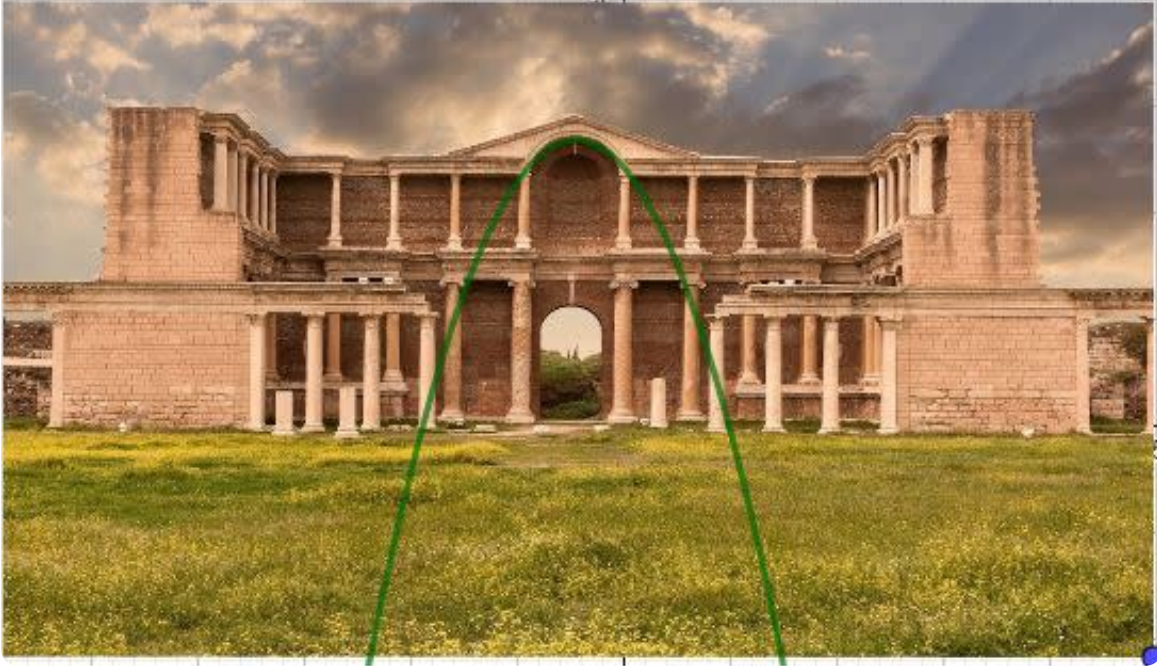
FATMANUR F/Şahin Şen Girls Anatolian Imam Hatip High School



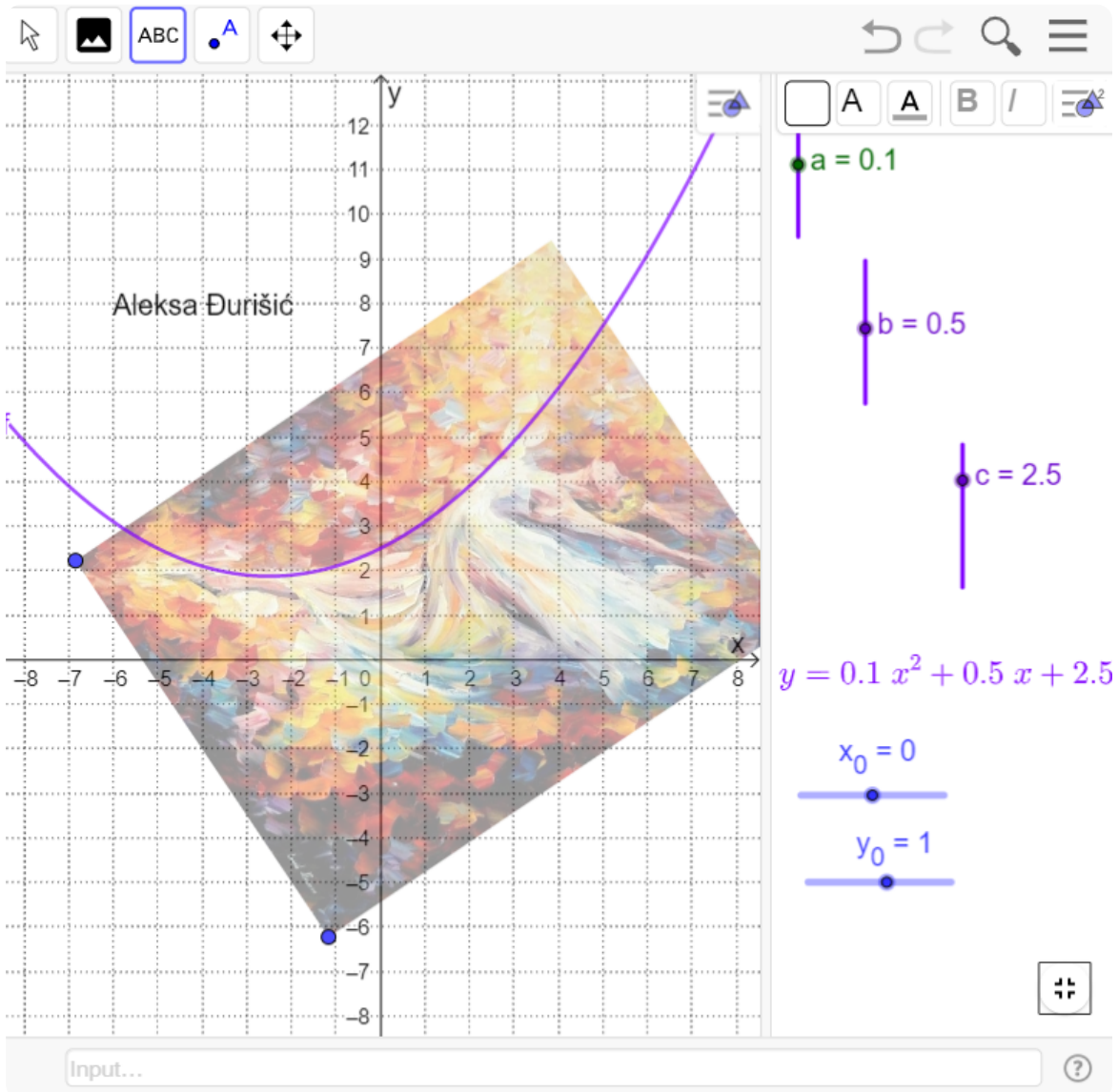
HALİME A/Şahin Şen Girls Anatolian Imam Hatip High School

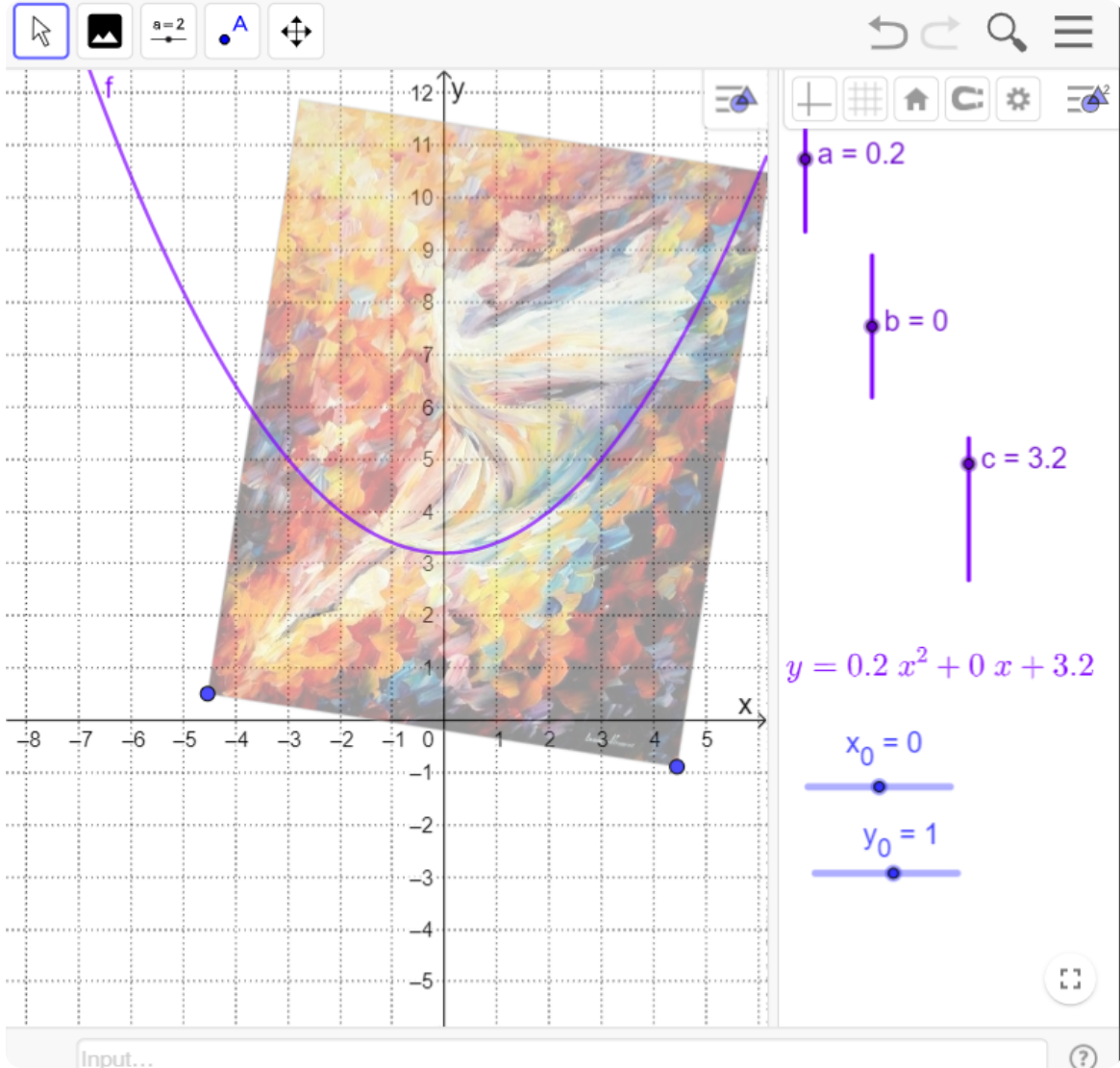
SARDES ANCIENT CITY
MANISA/TURKEY

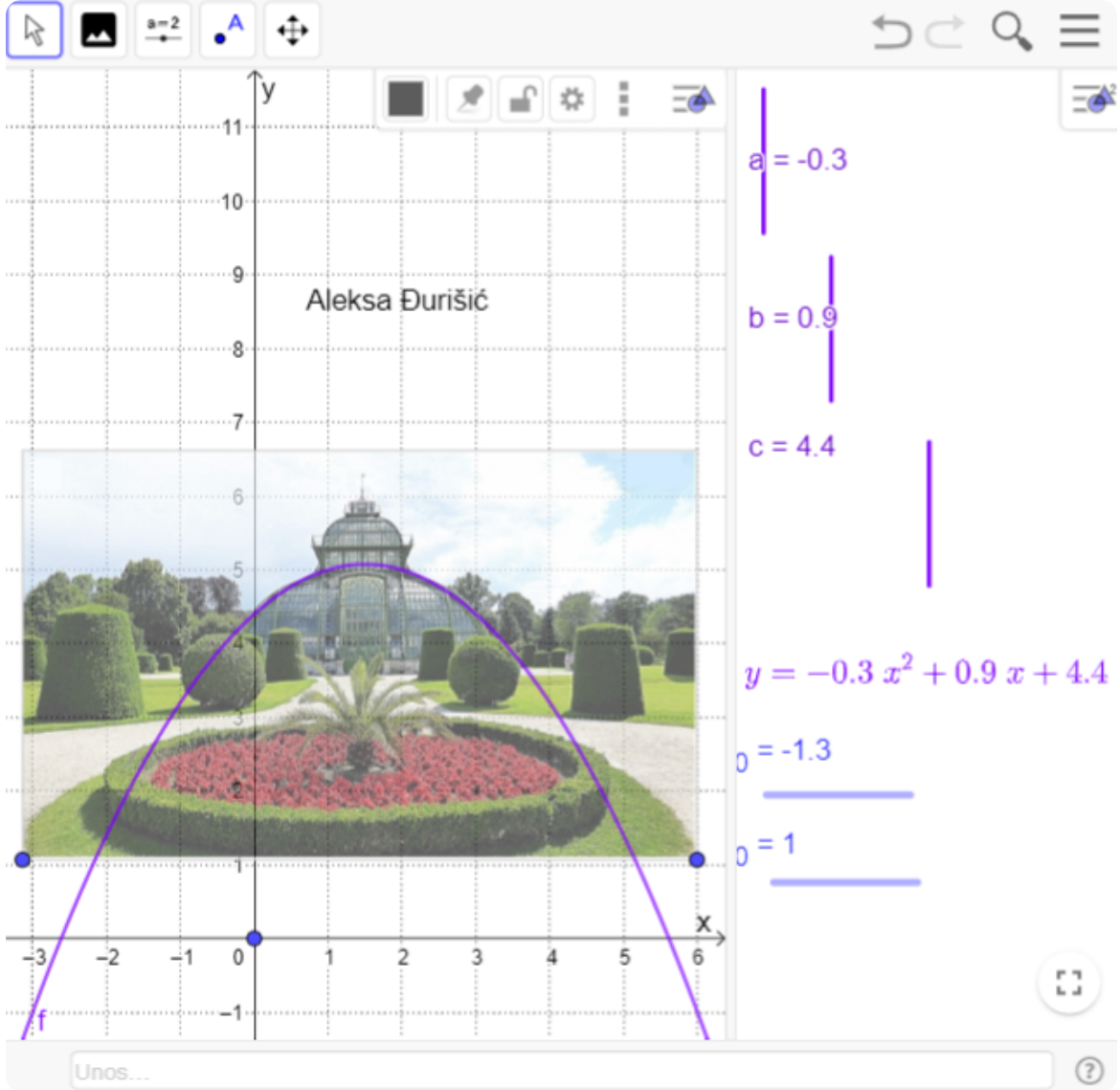
$$f(x) = -1.3x^2 - 1.2x + 2.4$$



Pınar ASLAN/Şahin Şen Girls Imam Hatip High School





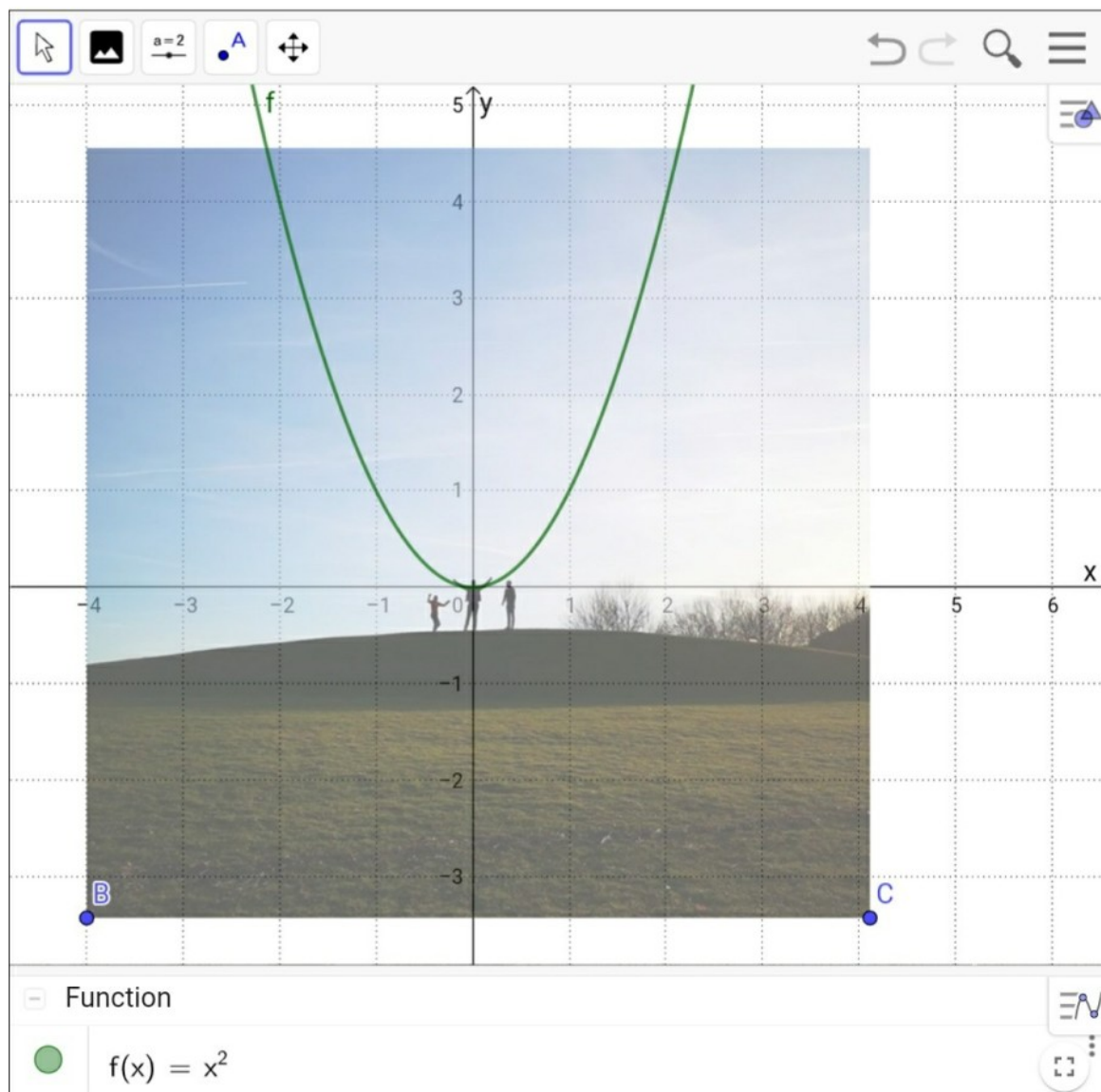


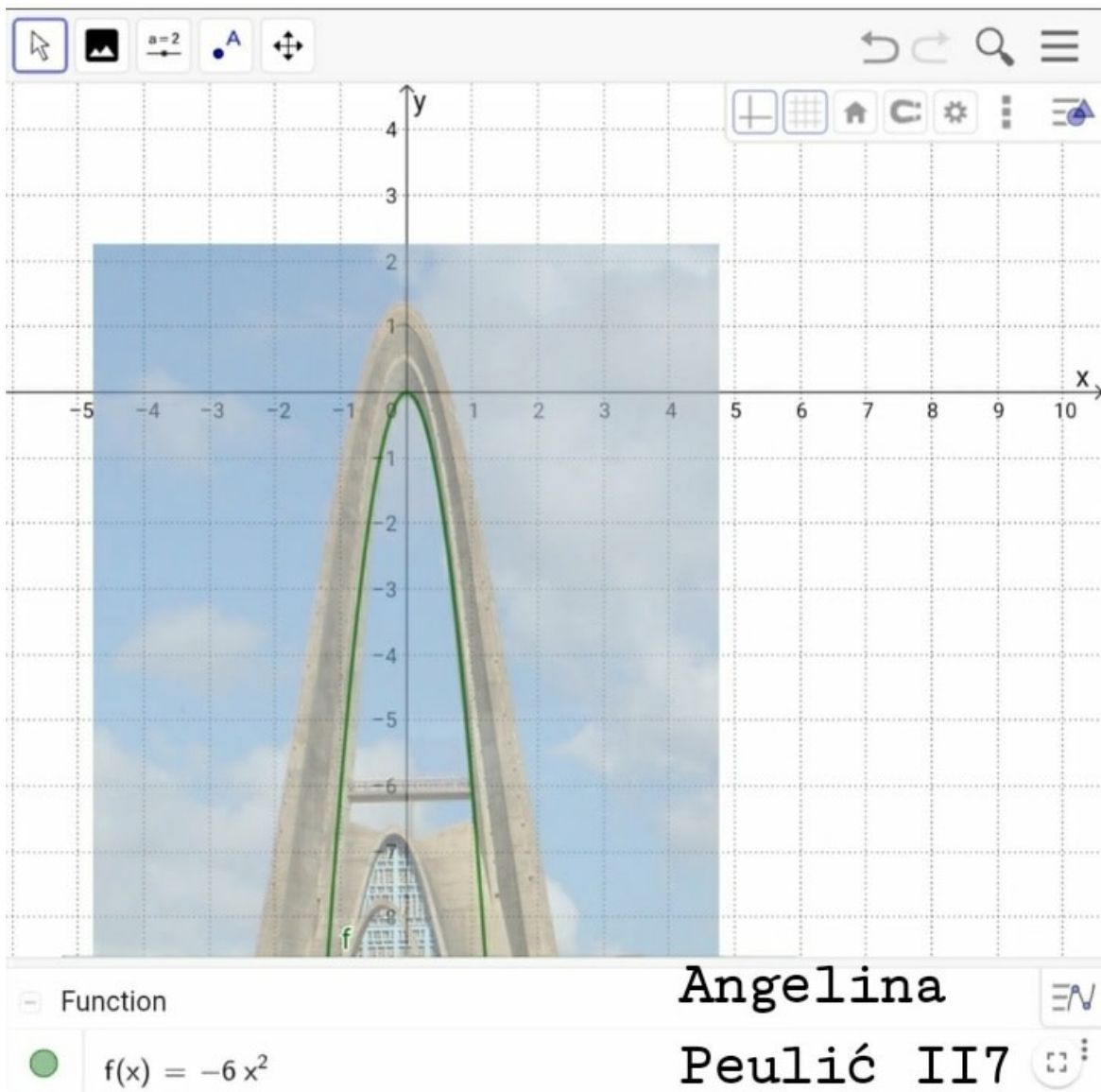
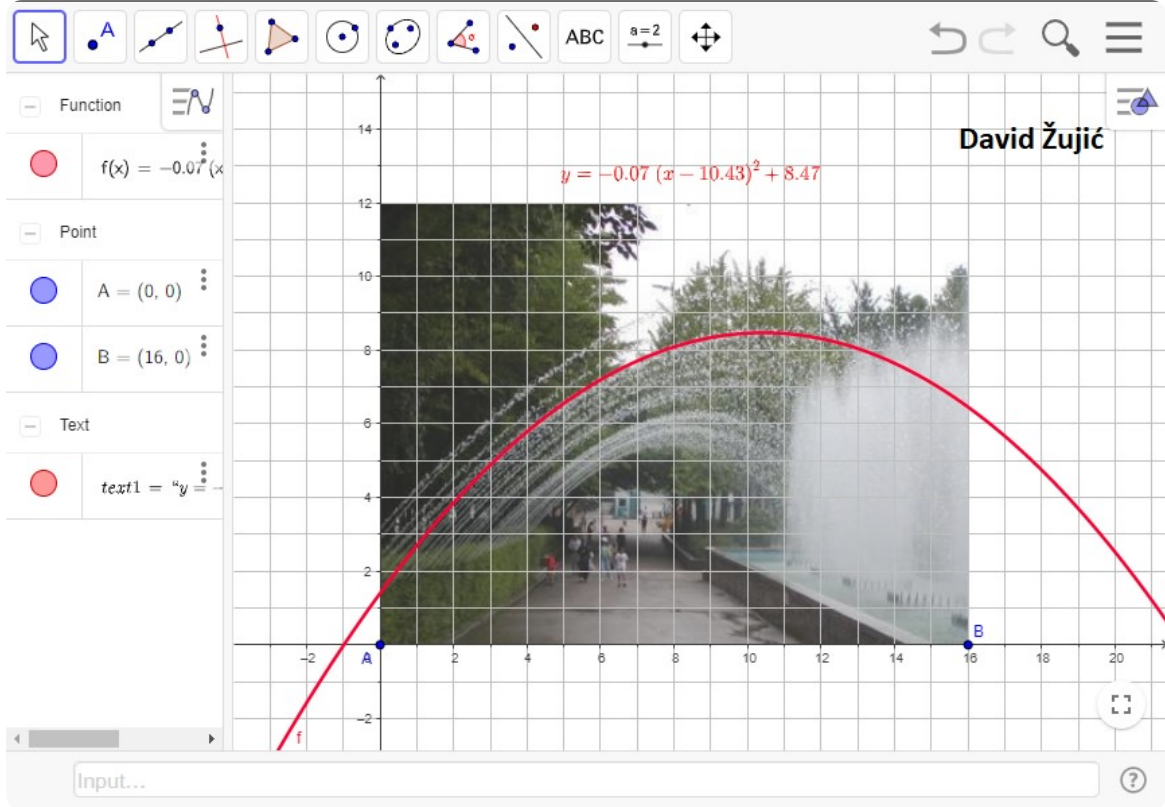
Boško Stojković

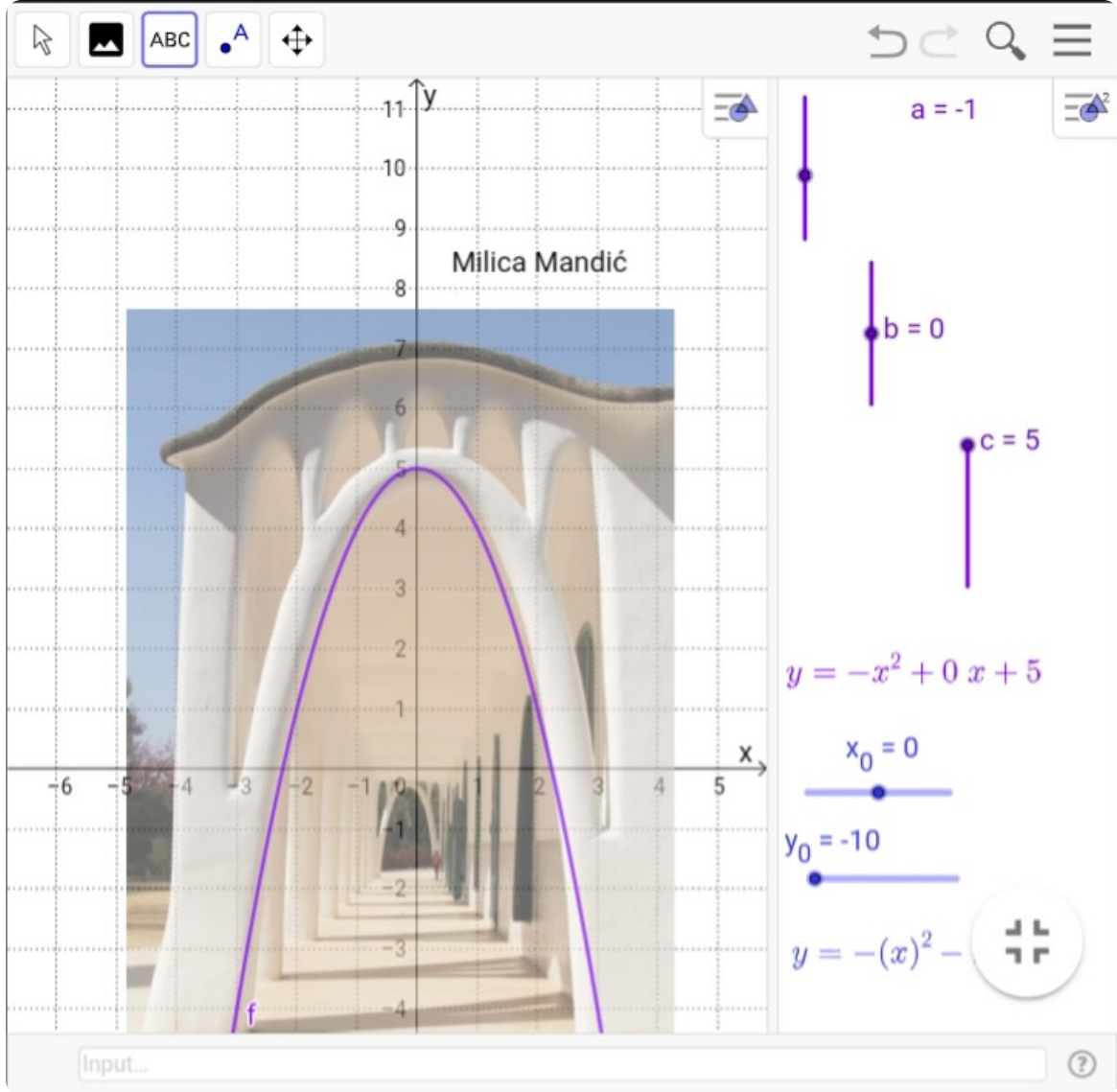
Određujemo parabolu

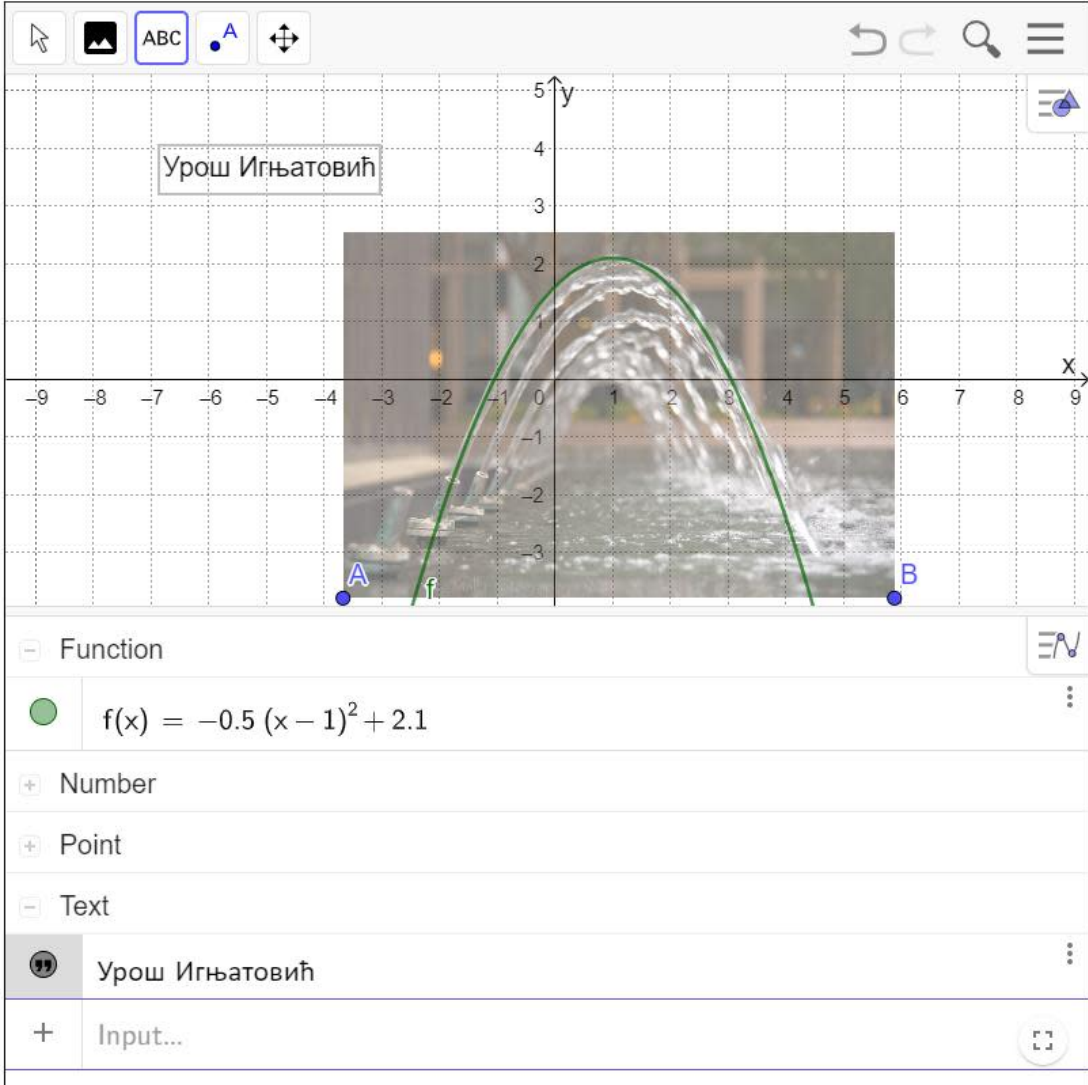
Author: Aleksandra Brmbota

Topic: Parabola, Quadratic Functions



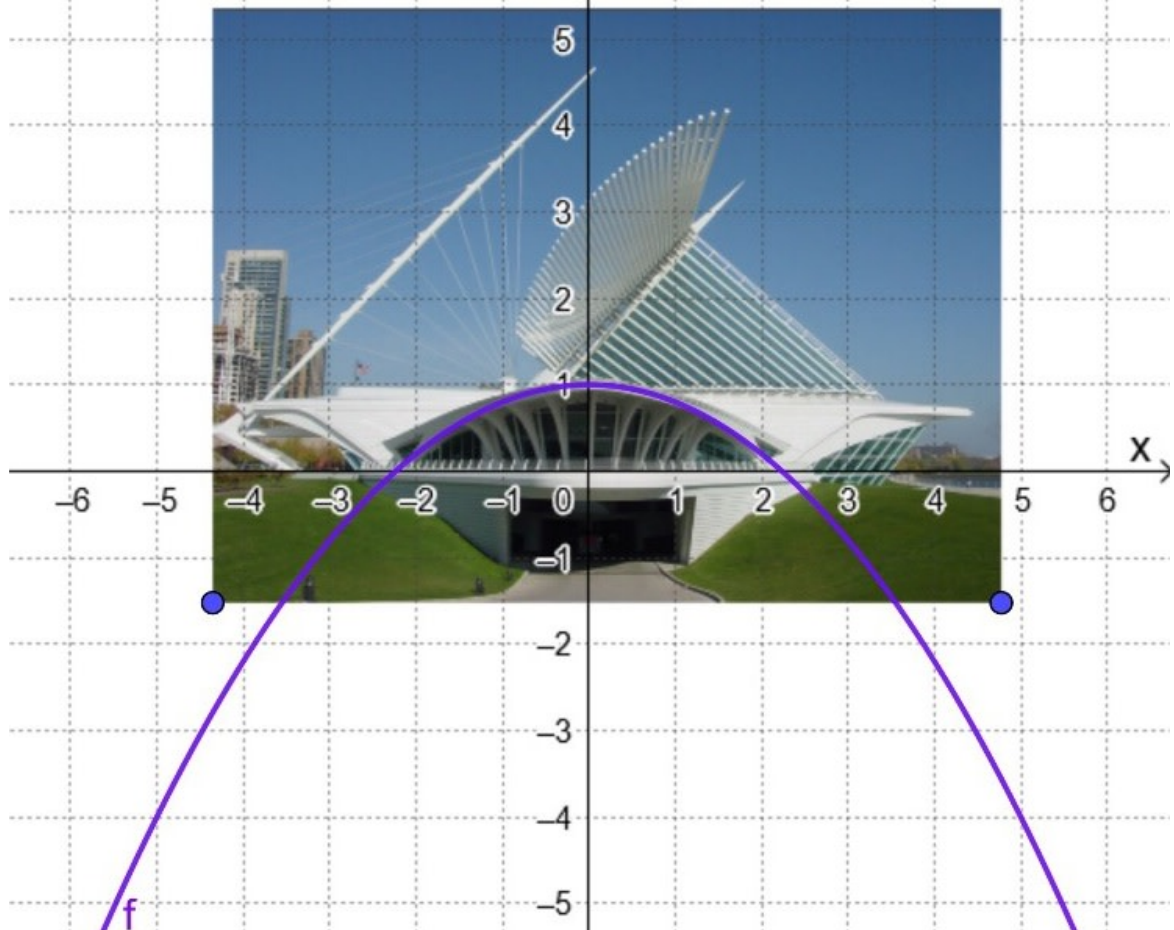


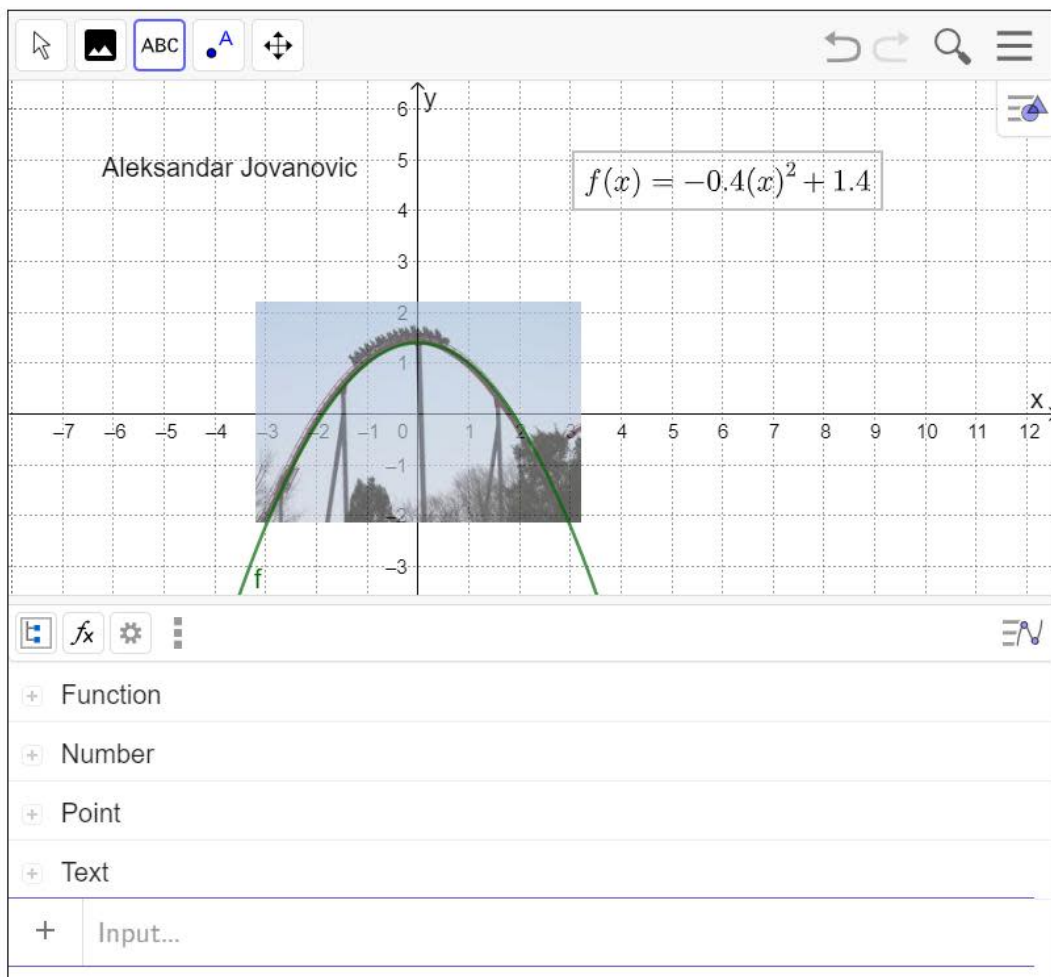
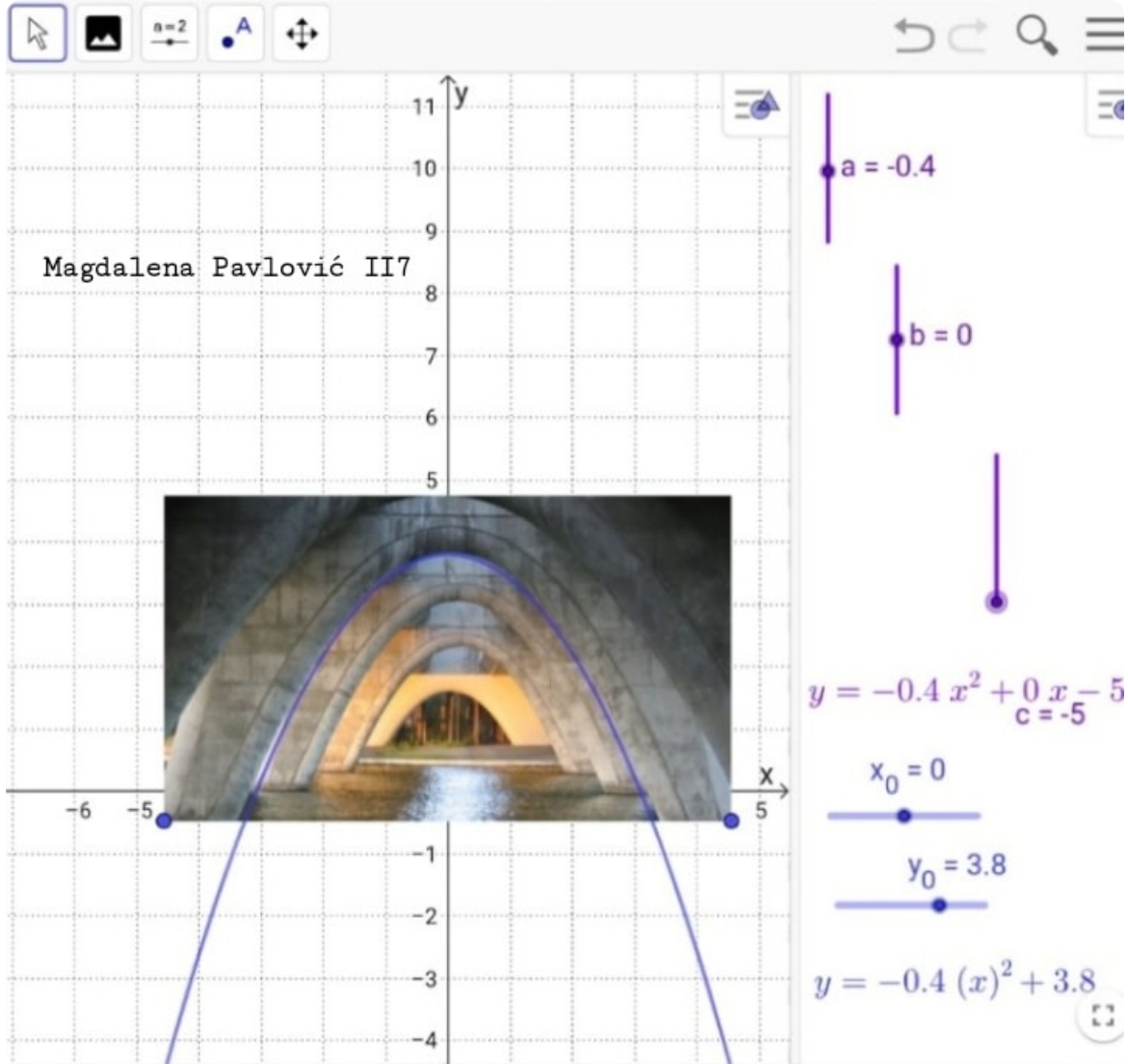


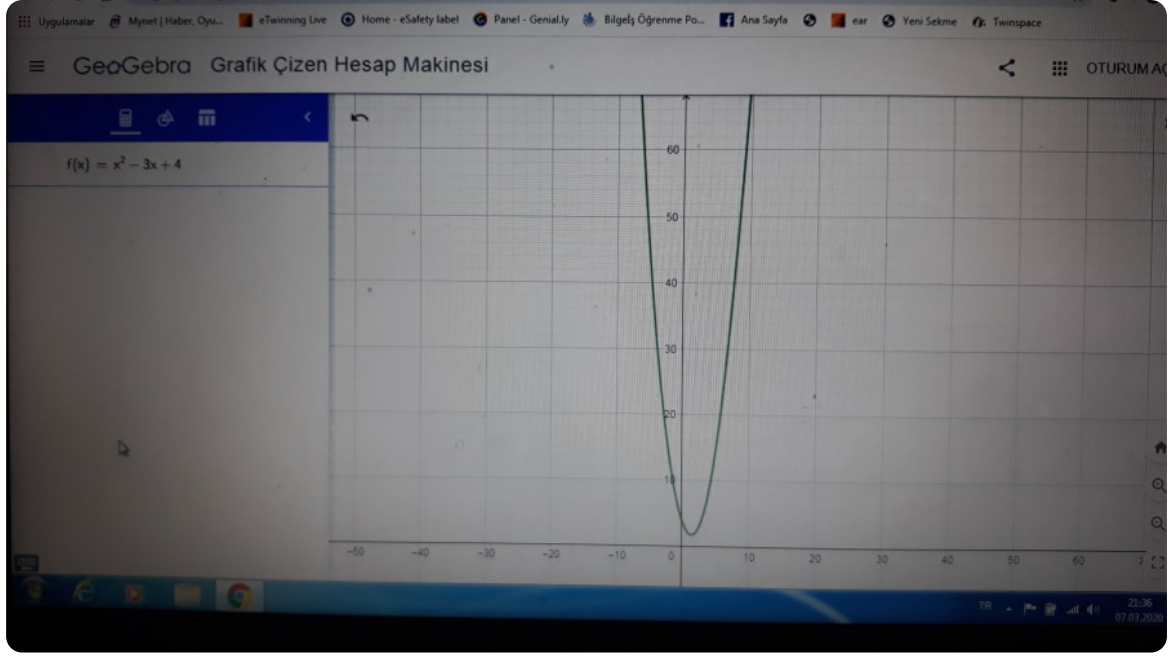


$$y = -0.2(x)^2 + 1$$

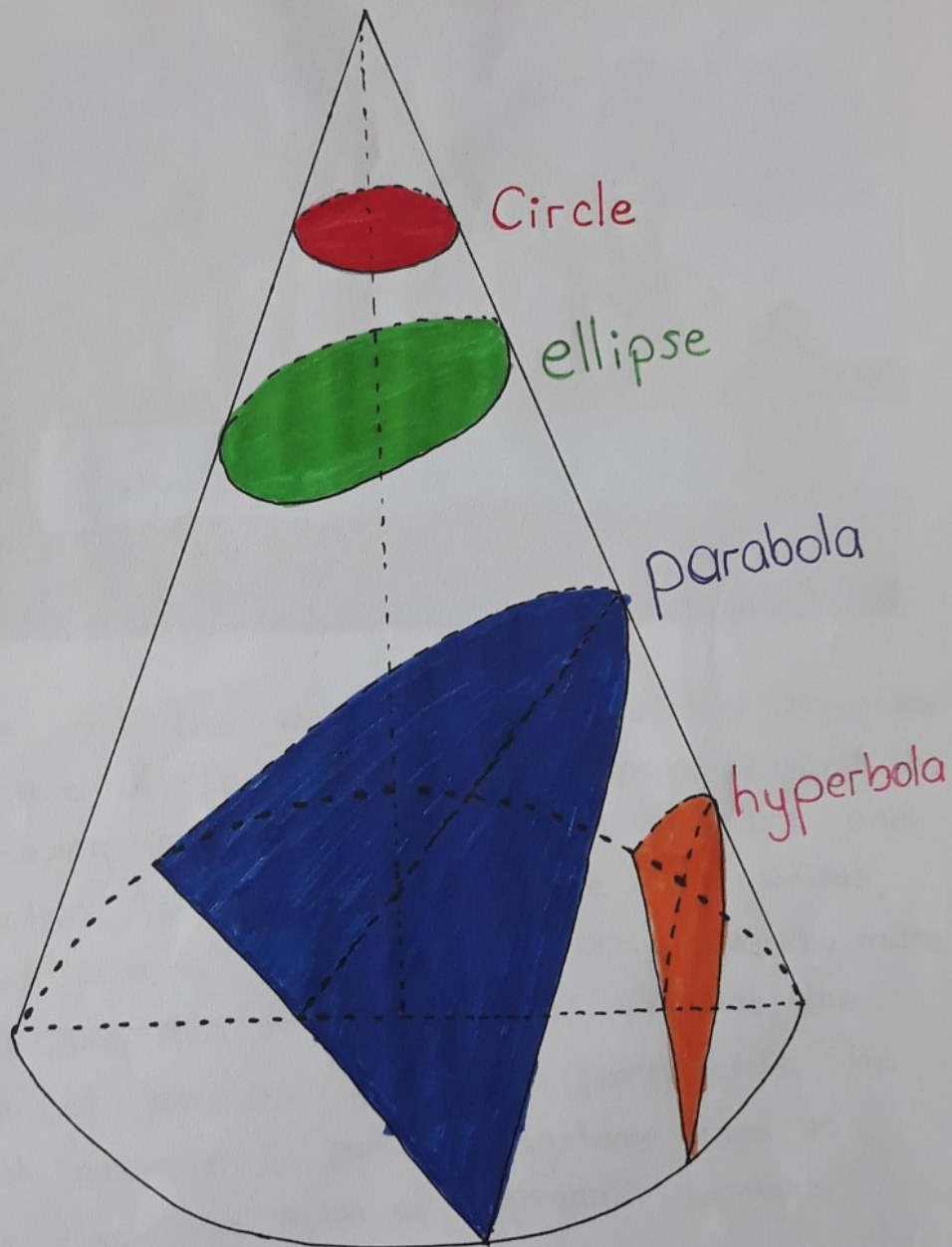
Dunja Milenkovic







Berfin Aslan



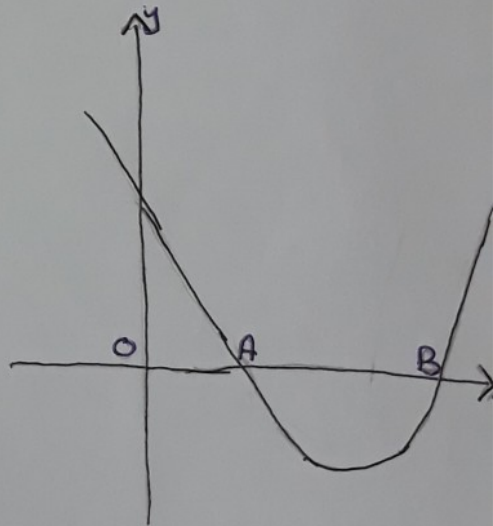
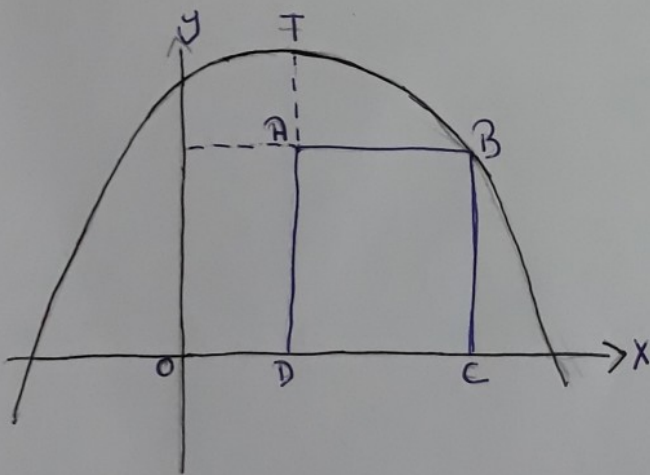
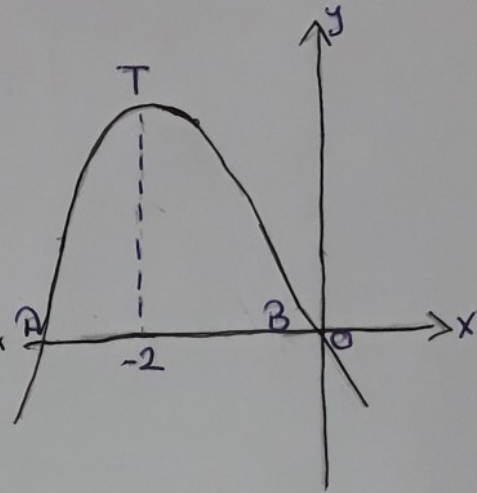
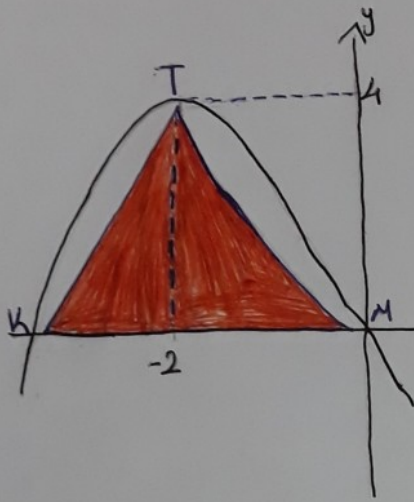
The Parabola is a member of the family of conic sections.

-5-

Gamze Güğel

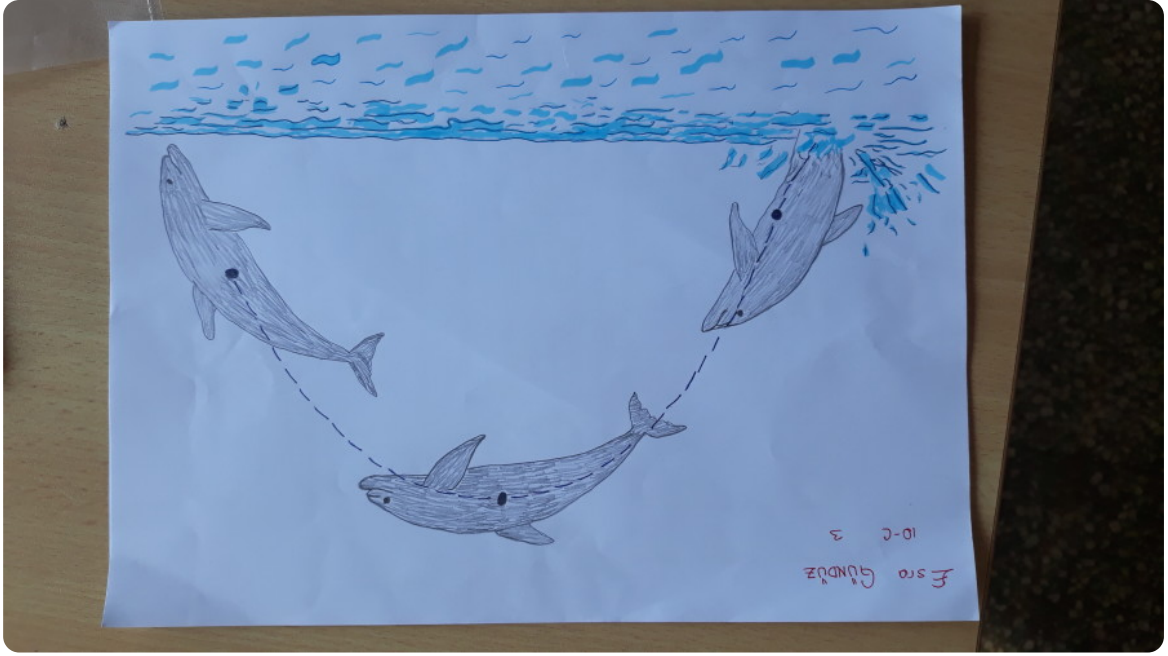
Gamze Güğel

Examples of Paraboles



7- ZEHRA TURGUT

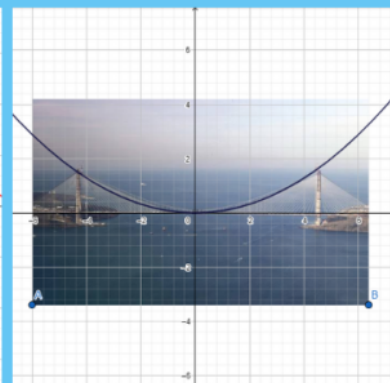
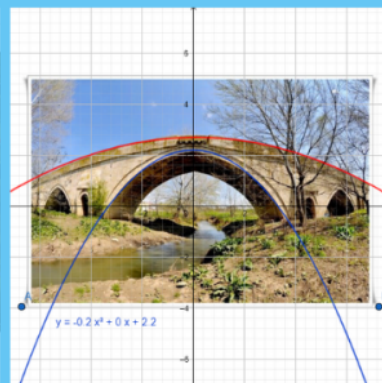
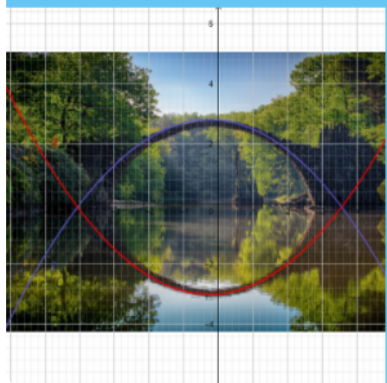
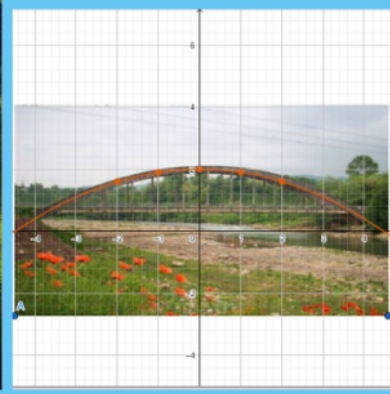
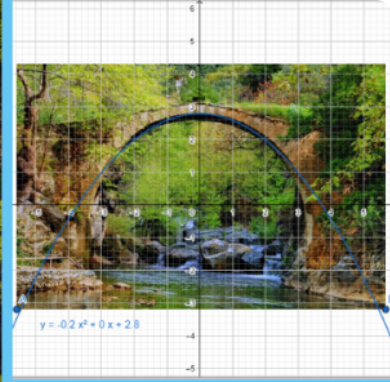
Zehra Turğut



Esra Gündüz



Nisa A. / Babaeski Şehit Ersan Yenici Anadolu Lisesi



Students of Babaeski Şehit Ersan Yenici Anadolu Lisesi

Powered by [wakelet](https://www.wakelet.com/)