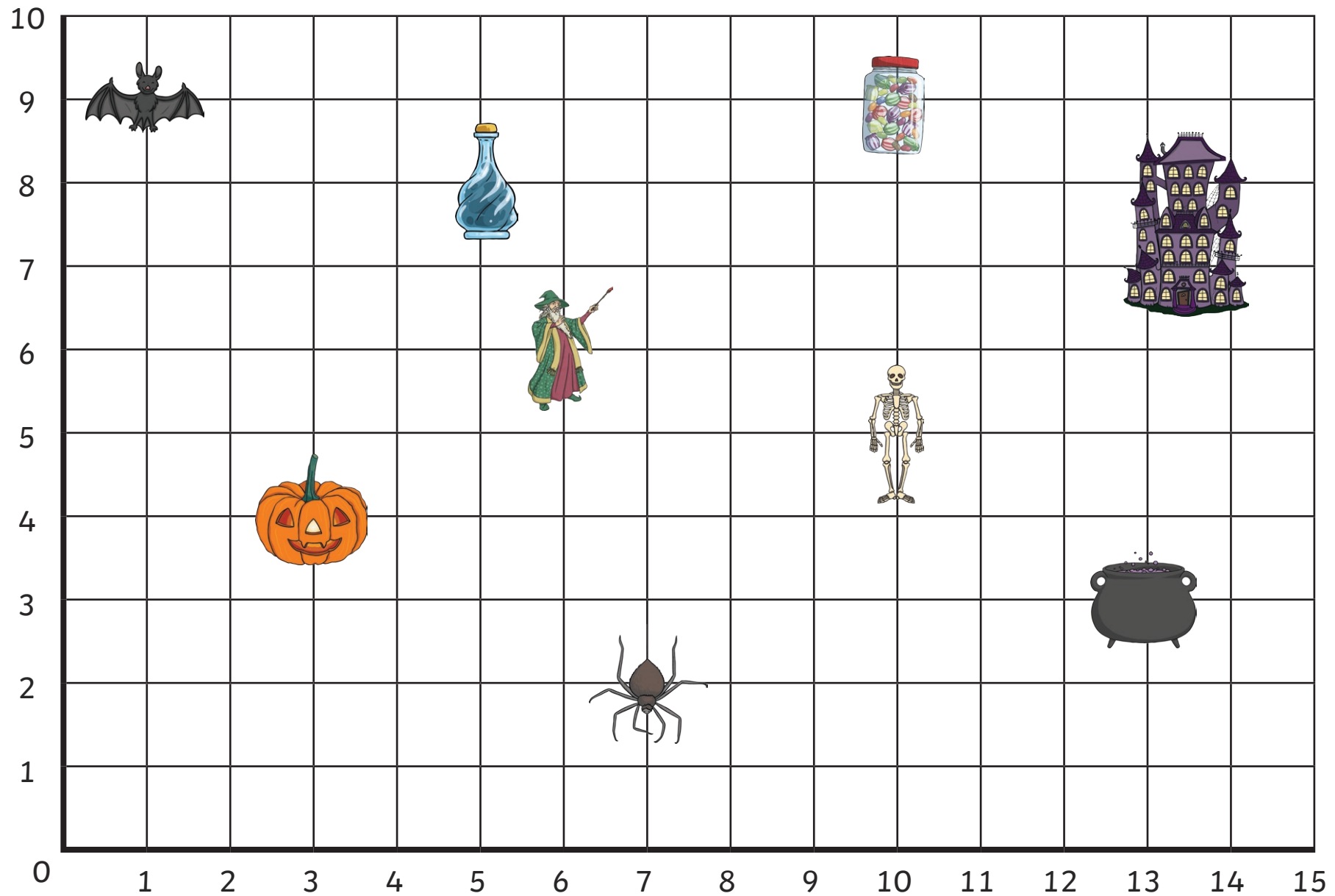


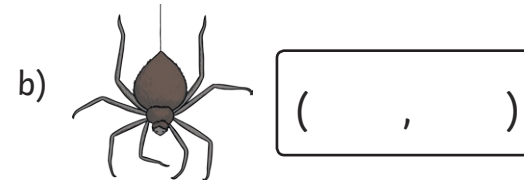
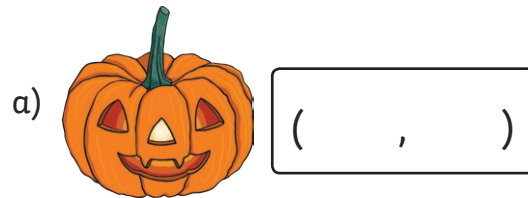
Halloween Coordinates



Halloween Coordinates

Aim: To describe positions on a 2D grid as coordinates in the first quadrant and plot specified points.

1. What are the coordinates of these objects:



2. Write down what you can see at the coordinates below:

a) (1, 9) _____

b) (6, 6) _____

c) (10, 5) _____

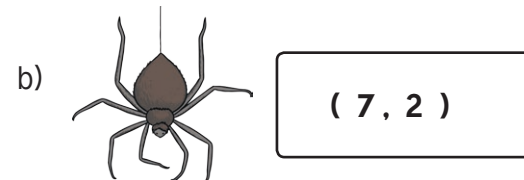
3. Draw a star on (8, 8) that has been made by the wizard's wand.



Halloween Coordinates **Answers**

Aim: To describe positions on a 2D grid as coordinates in the first quadrant and plot specified points.

1. What are the coordinates of these objects:



2. Write down what you can see at the coordinates below:

a) (1, 9) bat

b) (6, 6) wizard

c) (10, 5) skeleton

3. Draw a star on (8, 8) that has been made by the wizard's wand.

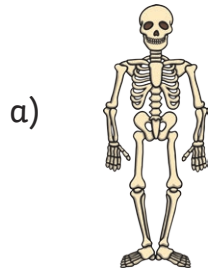
Star drawn on correct coordinate.



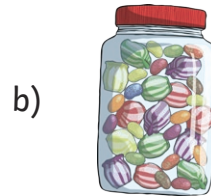
Halloween Coordinates

Aim: To describe positions on a 2D grid as coordinates in the first quadrant and plot specified points.

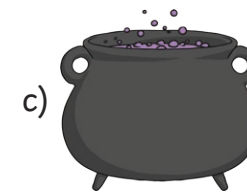
1. What are the coordinates of these objects:



(,)



(,)



(,)

2. Write down what you can see at the coordinates below:

a) (7, 2) _____

b) (1, 9) _____

c) (6, 6) _____

d) (3, 4) _____

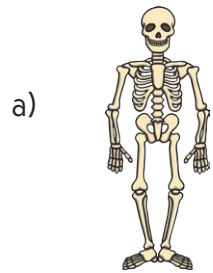
3. Draw a broom on the coordinates grid. Draw it so that the top of the handle is at (12, 9) and the brush ends at (12, 6).



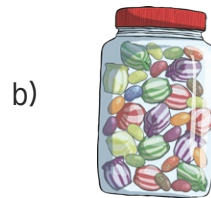
Halloween Coordinates **Answers**

Aim: To describe positions on a 2D grid as coordinates in the first quadrant and plot specified points.

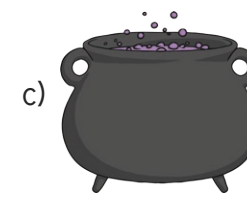
1. What are the coordinates of these objects:



(10, 5)



(10, 9)



(13, 3)

2. Write down what you can see at the coordinates below:

a) (7, 2) spider

b) (1, 9) bat

c) (6, 6) wizard

d) (3, 4) pumpkin

3. Draw a broom on the coordinates grid. Draw it so that the top of the handle is at (12, 9) and the brush ends at (12, 6).

Broom starting and ending on correct coordinates.



Halloween Coordinates

Aim: To describe positions on a 2D grid as coordinates in the first quadrant and plot specified points.

1. What are the coordinates of these objects:



b)



c)



2. Which 4 coordinates is the haunted house spread over?

3. Write down what you can see at the coordinates below:

a) (7, 2) _____

b) (3, 4) _____

c) (6, 6) _____

d) (10, 5) _____

4. Draw a line of spider's web that has been made by the spider. The web must start at the spider and then go to these coordinates in this order: (7, 4), (9, 4), (9, 8), (4, 8), (4, 5).

Halloween Coordinates **Answers**

Aim: To describe positions on a 2D grid as coordinates in the first quadrant and plot specified points.

1. What are the coordinates of these objects:



(1, 9)

b)



(5, 8)

c)



(10, 9)

2. Which 4 coordinates is the haunted house spread over?

(13, 7)

(14, 7)

(13, 8)

(14, 8)

3. Write down what you can see at the coordinates below:

a) (7, 2) spider

b) (3, 4) pumpkin

c) (6, 6) wizard

d) (10, 5) skeleton

4. Draw a line of spider's web that has been made by the spider. The web must start at the spider and then go to these coordinates in this order: (7, 4), (9, 4), (9, 8), (4, 8), (4, 5).

Lines connecting correct coordinates in the correct order.