

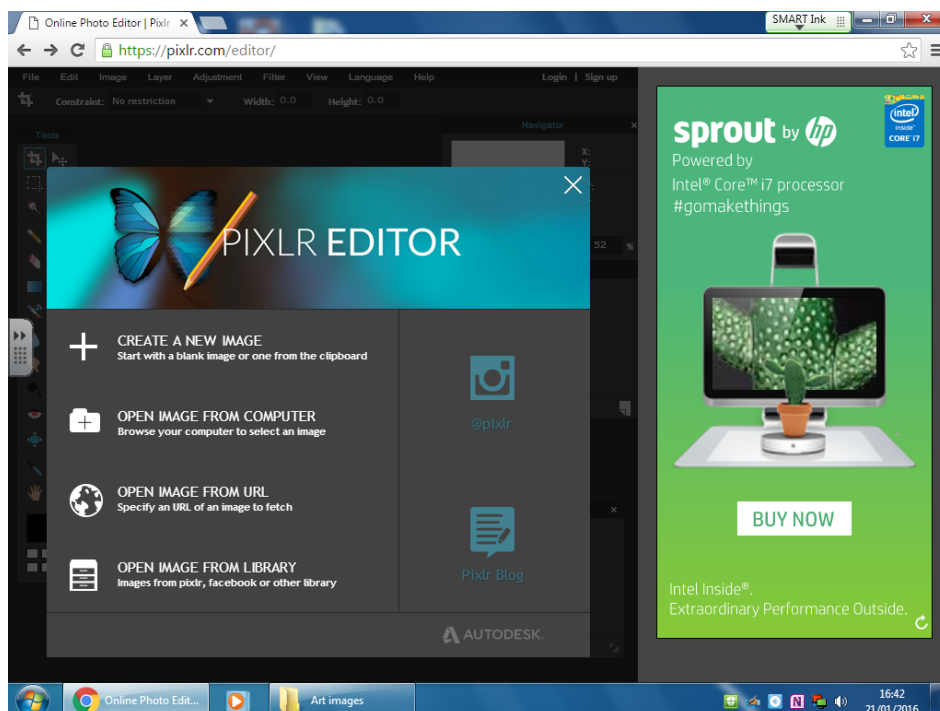
Basic Guide to Pixlr (free photo-editing software)

Preparation for Pixlr work

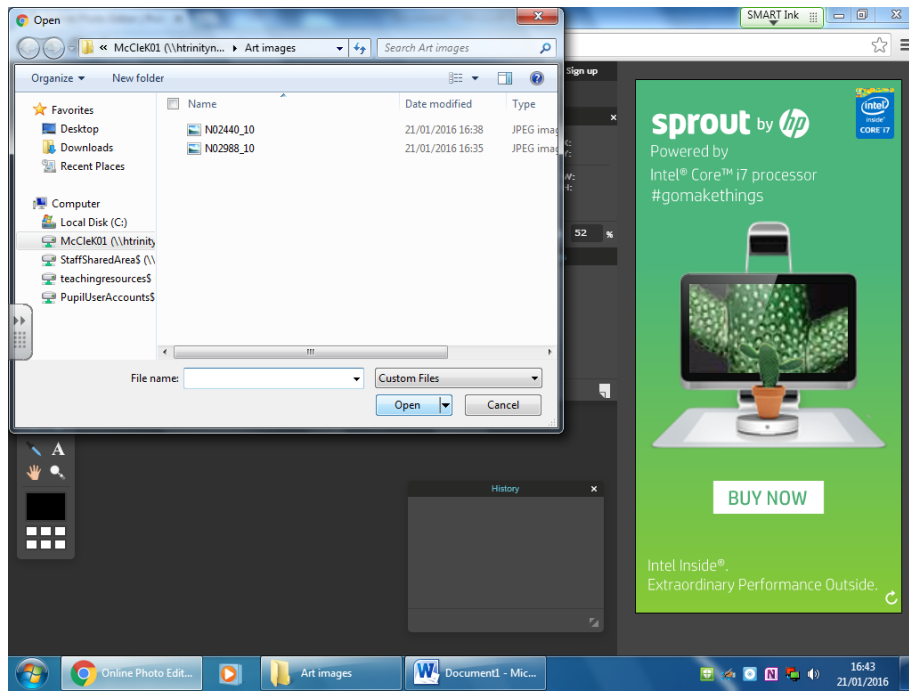
- Before doing anything in Pixlr, set up an images folder in the pupil area, where the children can store any images that they intend to use.
- Ask them to save them from the internet or scan them into that folder. I would recommend that each child has their own sub-folder within the images folder, where they store their individual images.
- Make sure they name/rename the images so they can identify their images easily e.g. Keeleylandscape.
- Only once all the images have been collected and saved, open Pixlr.

Opening Pixlr - www.pixlr.com

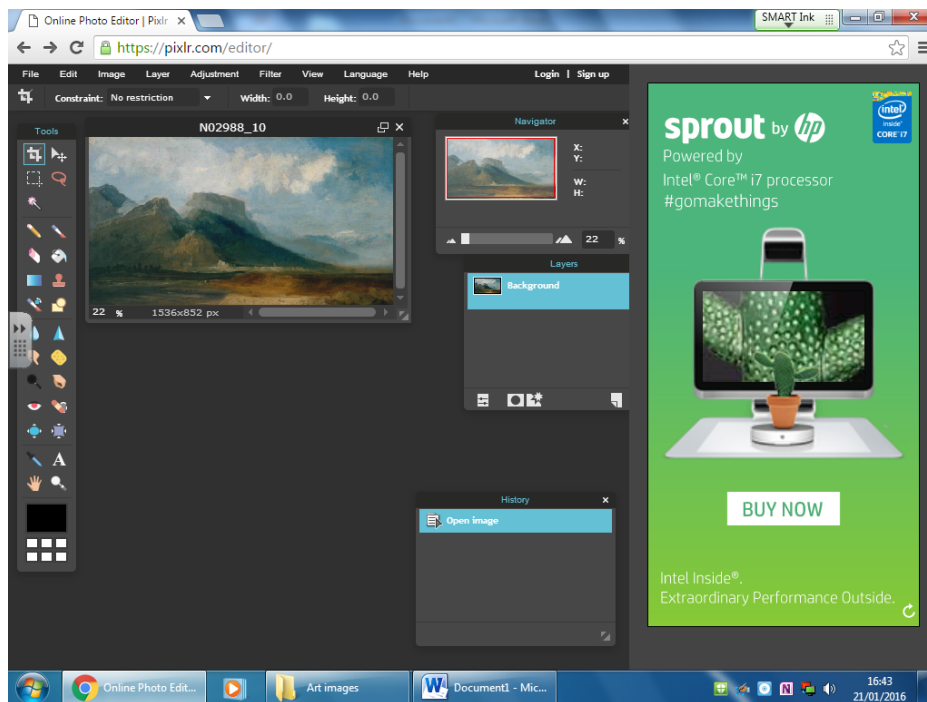
- Chose **pixlr editor**
- **DO NOT LOGIN OR DOWNLOAD**



- Click '**open image from computer**'
- Select the required image from the images folder you set up earlier (see below)



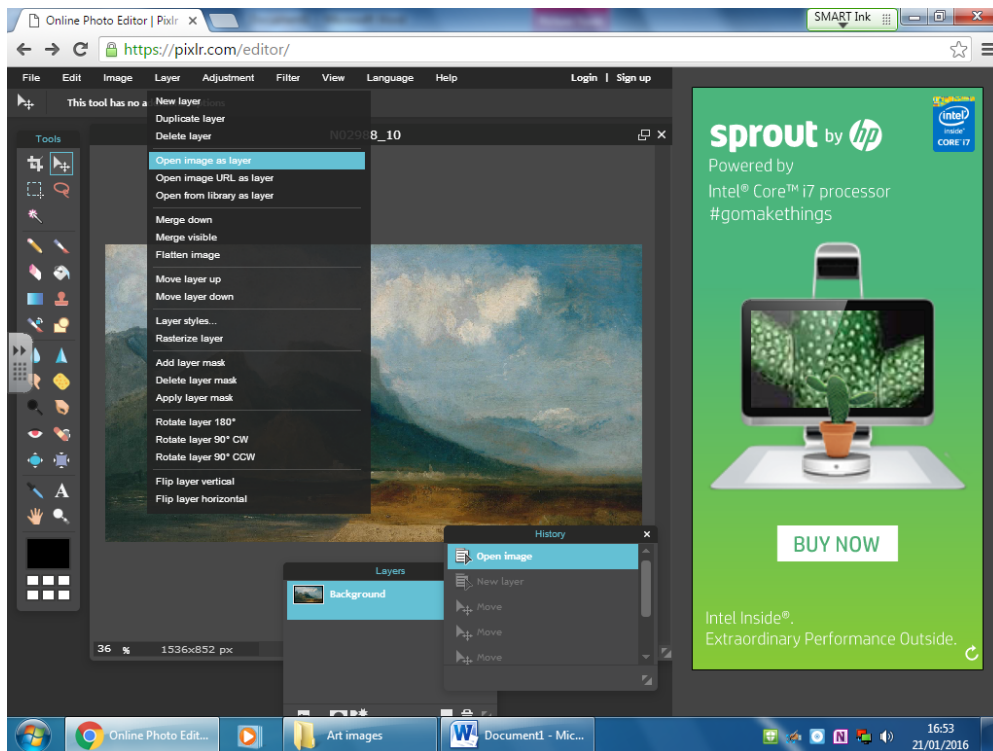
- This image will be your background layer (see below).



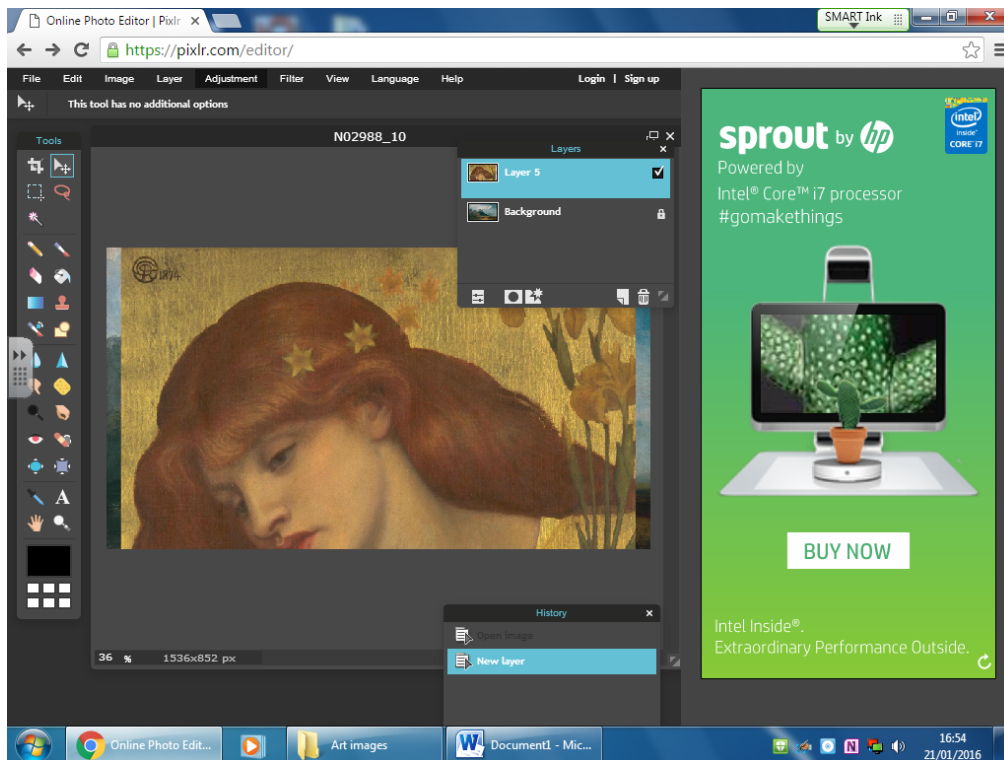
- Move palettes out of the way by clicking on them and dragging. Close them by clicking the x in the top right-hand corner. Keep the layers palette open – you will need it!
- To make the image window larger by pulling on the arrows in the bottom right-hand corner.
- To make image itself larger – View drop-down menu – Zoom in

To add another image to background

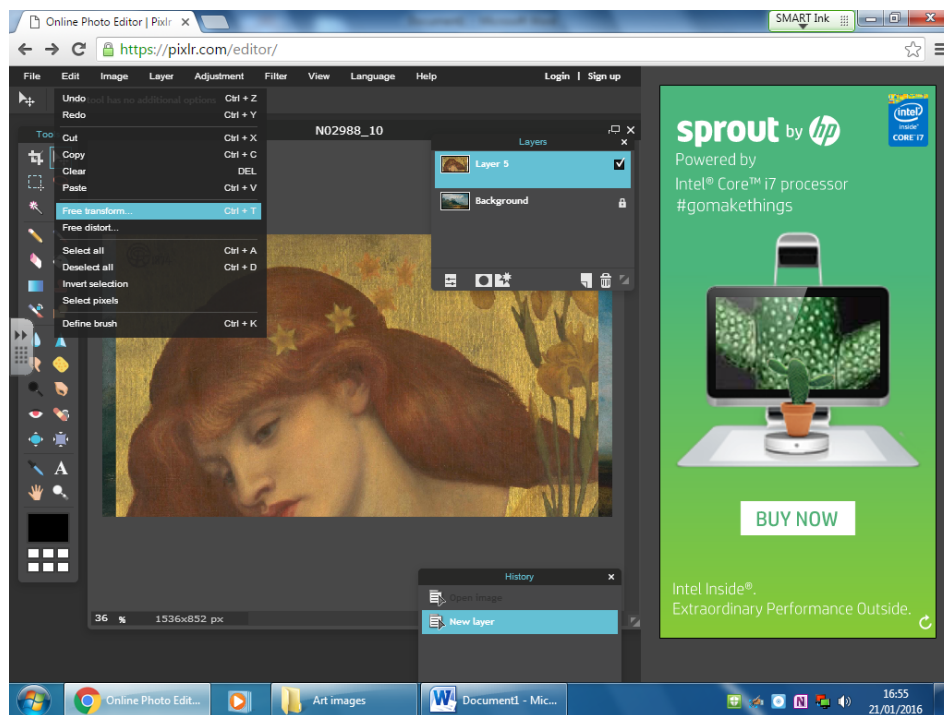
Layer drop-down menu at the top - select “open image as layer”



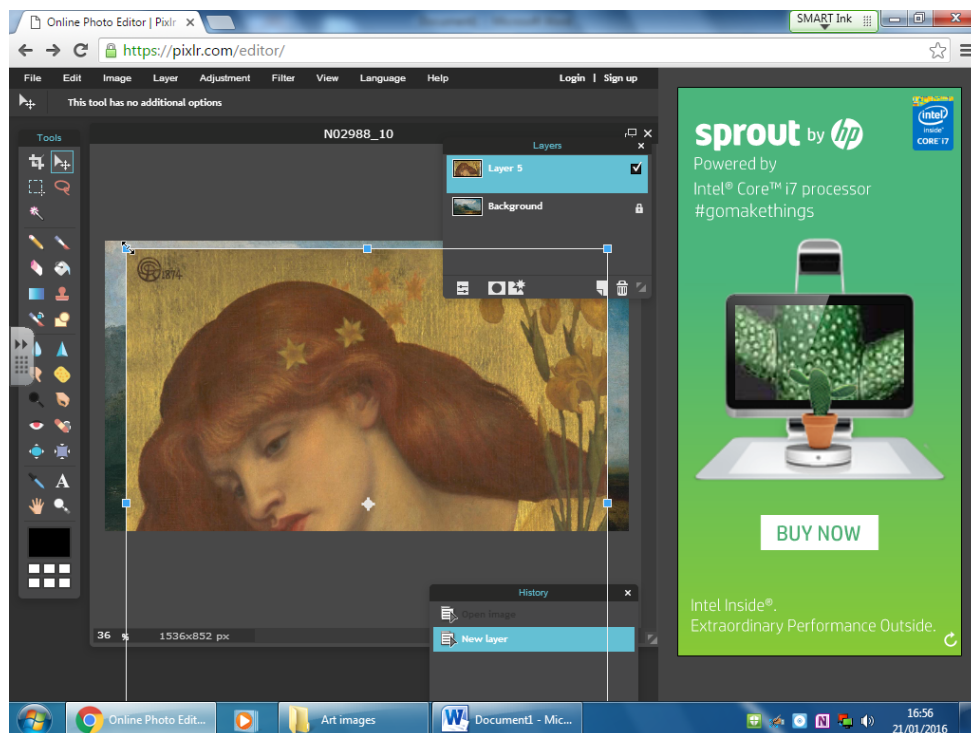
- The newly opened image will appear on a new layer – see layers palette.



To Re-size Image

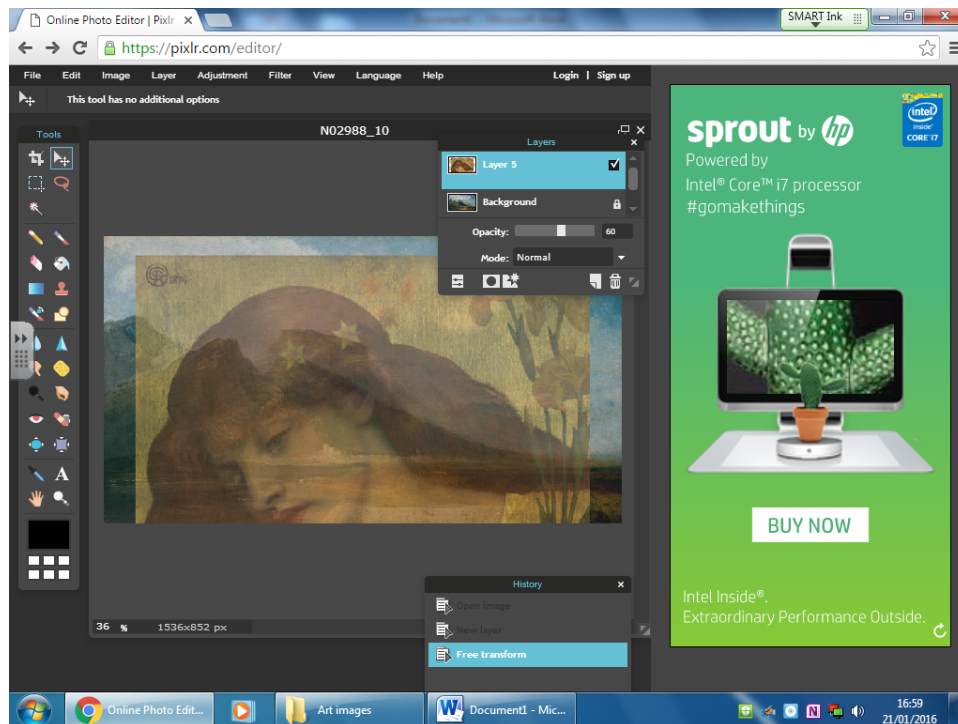


- **Edit drop down menu – Free transform** – you will see blue handles on the bounding box appear



- To constrain the proportions of the image (so it doesn't become distorted) - **Hold down shift key on keyboard and left click mouse and drag to required size.**

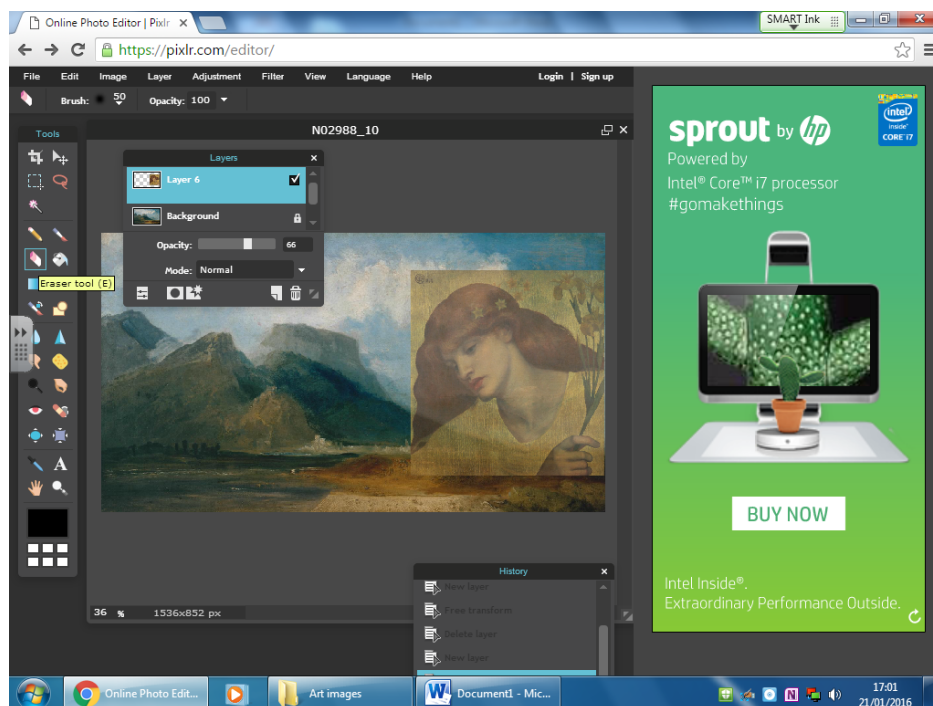
- You can **reduce the opacity of the layer** so you can see where you want to place it by **clicking on the slider icon in the layers palette and moving the slider**.



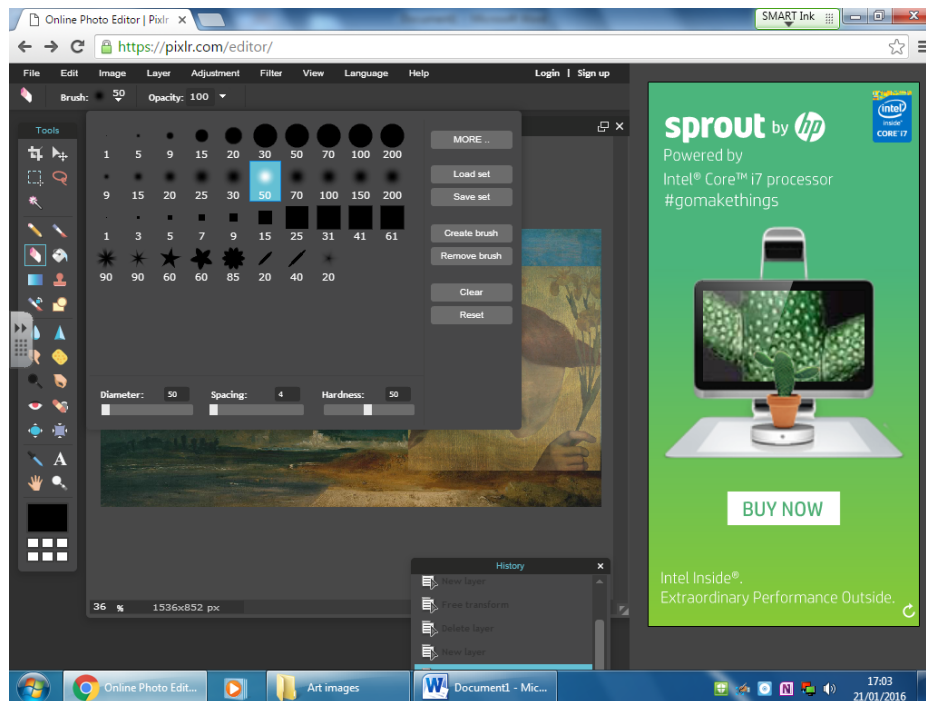
- Once you have positioned the image where you want it on the background, you can edit it.

Editing images

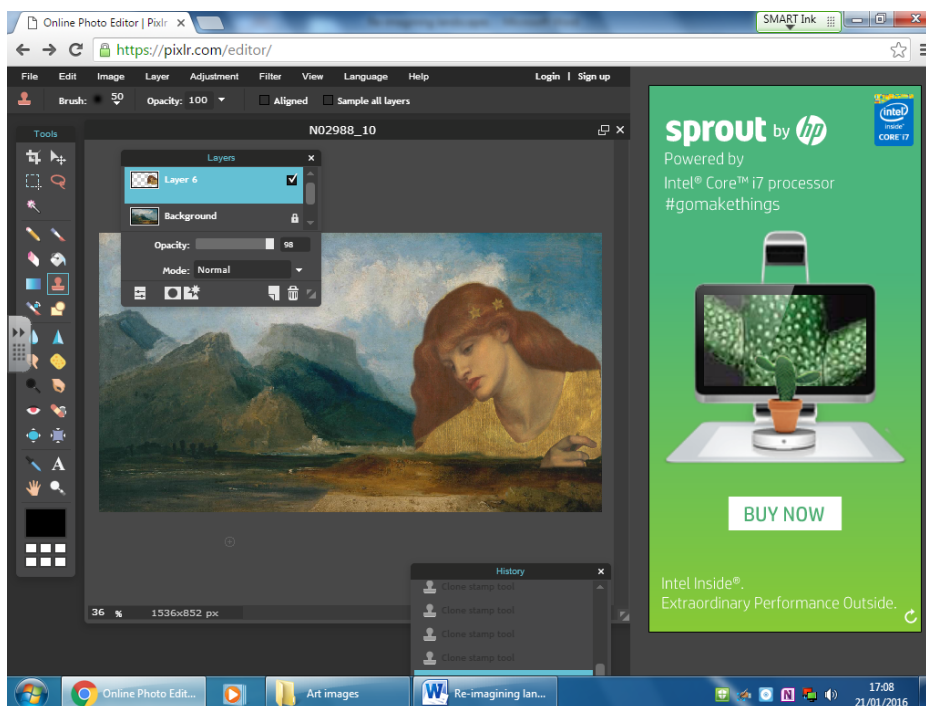
- Select the rubber tool to erase bits of the image you do not want – **MAKE SURE YOU ARE ON THE CORRECT LAYER!**



- It looks better if you do this with a **soft brush**, as you don't end up with jagged edges! You can **change the size of your brush to get into smaller places in the brush menu** – just stick to a soft one!



NB: It is easier to do any cutting or erasing with a finger on the IWB, especially if children have motor skills difficulties!



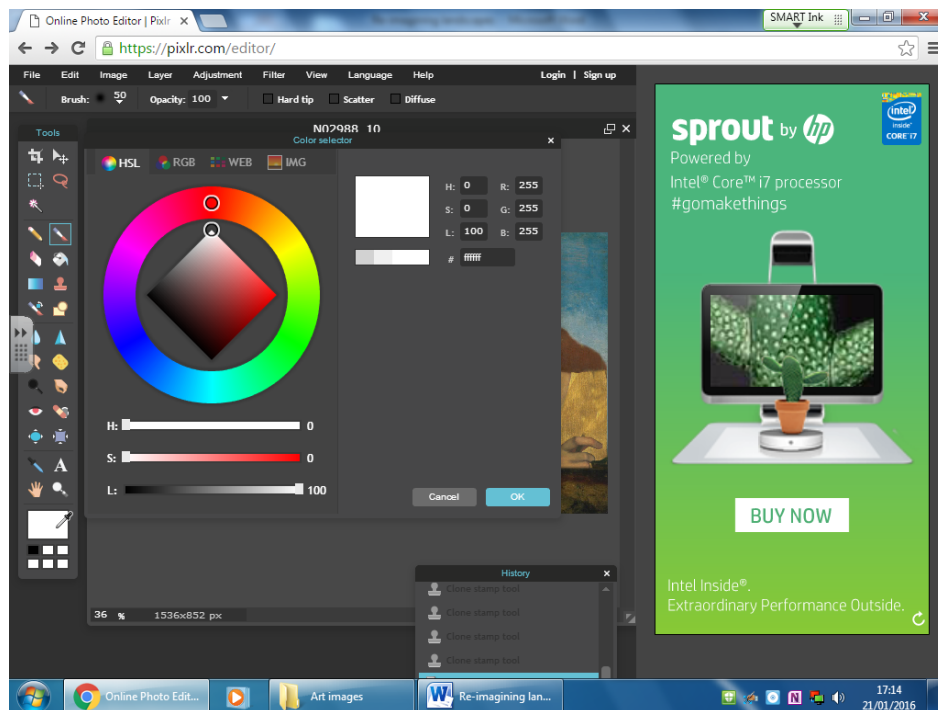
- Once you have erased the bits you don't want **increase the opacity back to 100%** - you image is now integrated into your landscape! Add as many new images as you want - **BUT ALWAYS PUT THEM ON A NEW LAYER!**

Painting on layers

- Layers drop down – **new layer**
- Pick brush or pencil tool from the side menu

To change colours

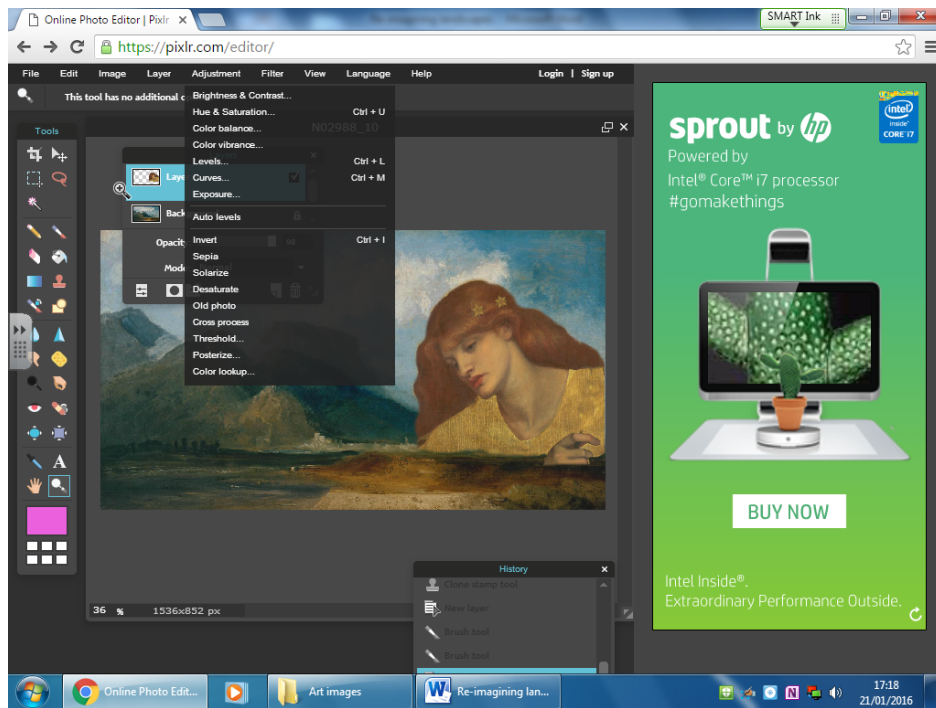
- Click on white rectangle palette in side menu
- Select colour from outside wheel
- Then select tone from the diamond - OK



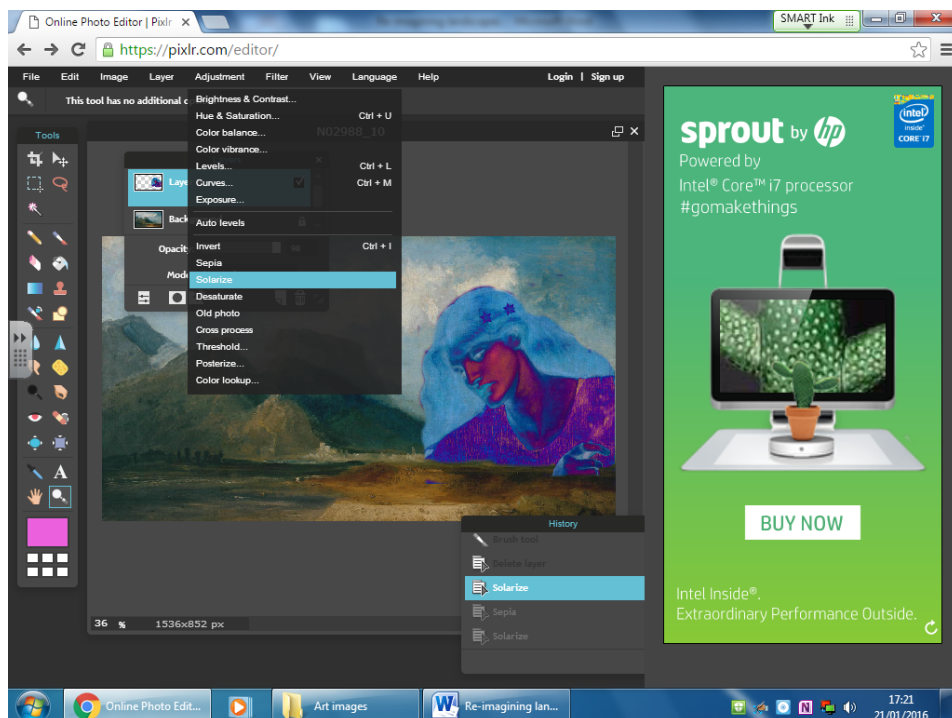
Deleting layers and undoing

- Delete layers by **dragging into the bin icon** in the layers palette, if you don't want them!
- **Undo in the edit drop-down menu** or have the History palette open and just click on the step that you want to go back to

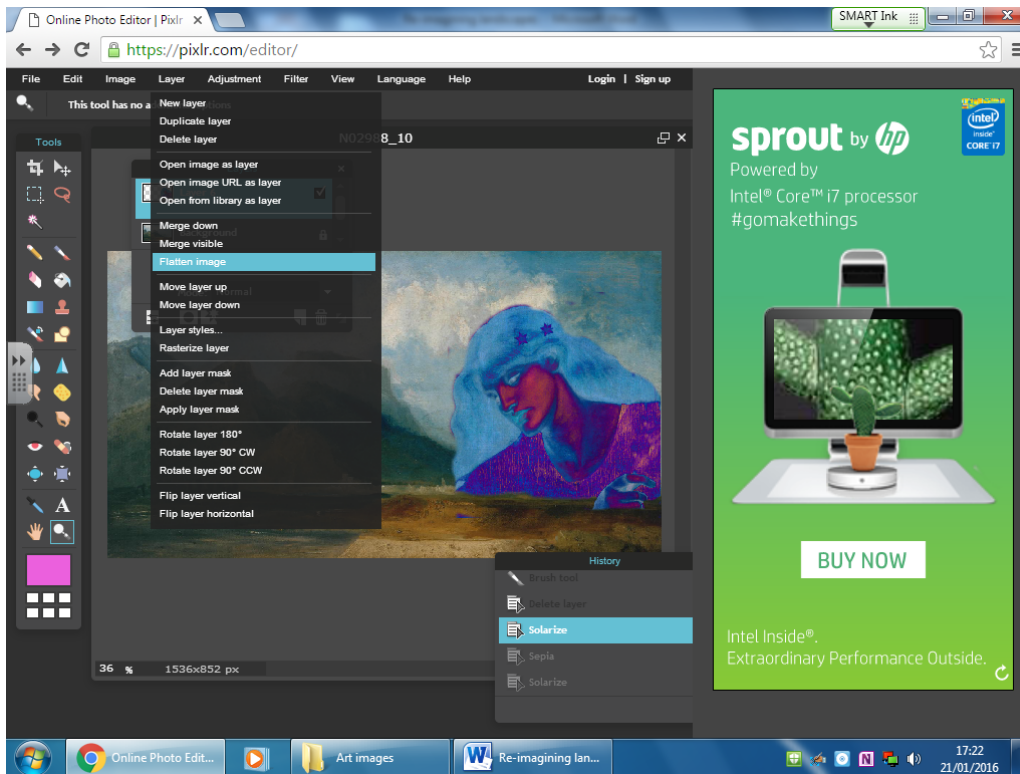
Adjustments and Filters



- Some adjustments are subtle e.g. contrast etc. but others have strange effects e.g. solarize!
- Play around with different adjustments – you can always edit and undo



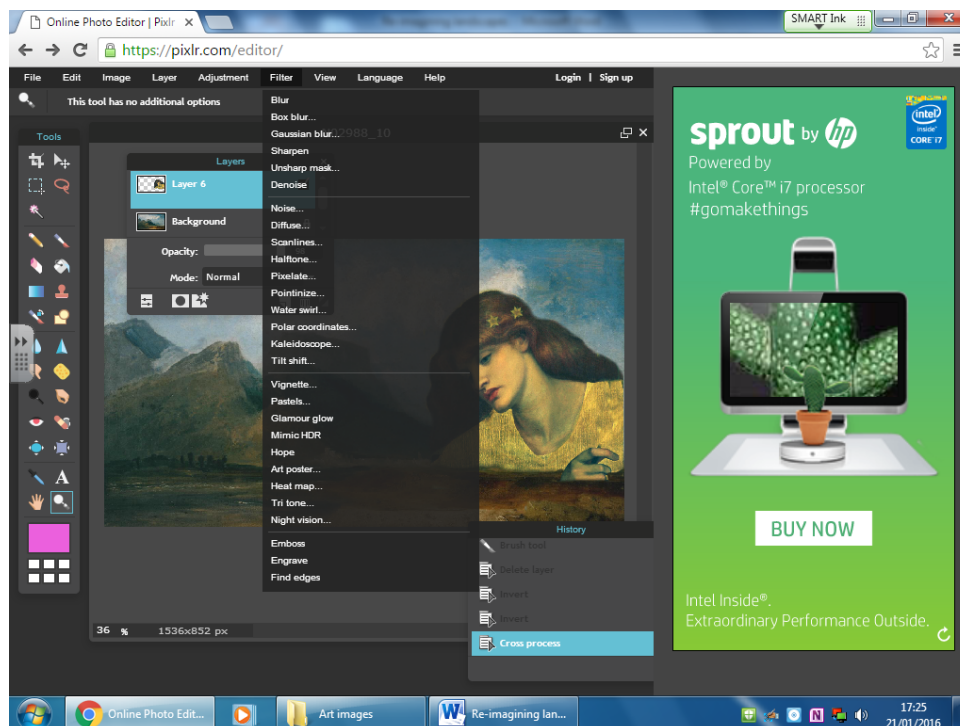
- The adjustment will only apply to the selected layer.
- If you want the filter to apply to all the layers you will need to flatten the image first in the layers drop-down menu (see below)



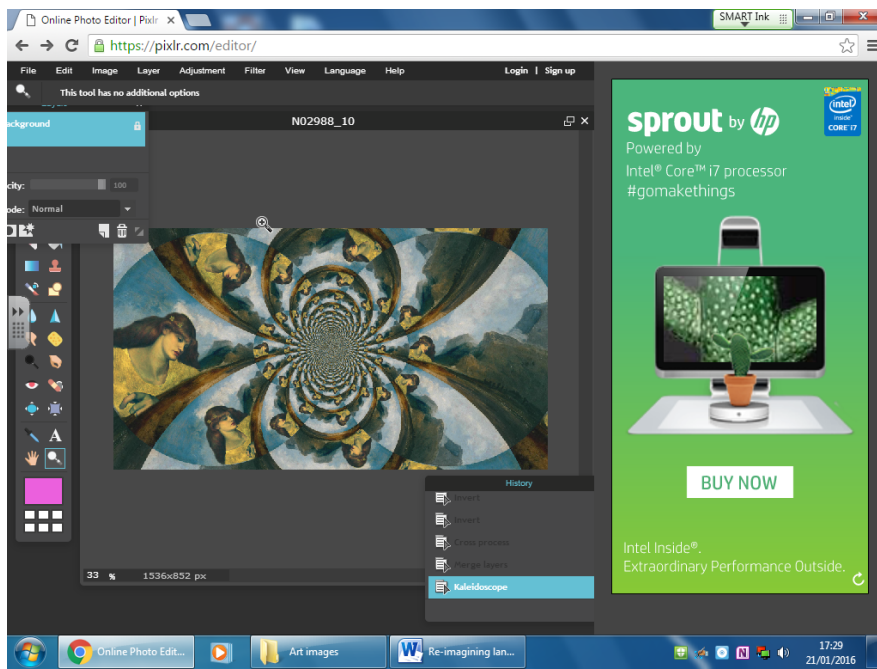
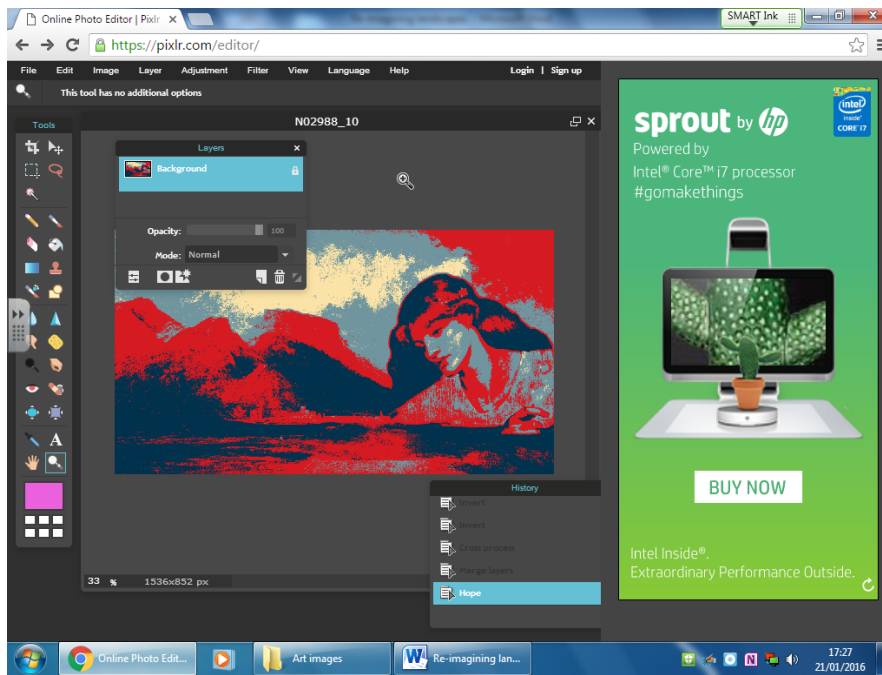
Be warned – once you have flattened the image you can no longer adjust layers separately, though you can add more layers on top!

Filters

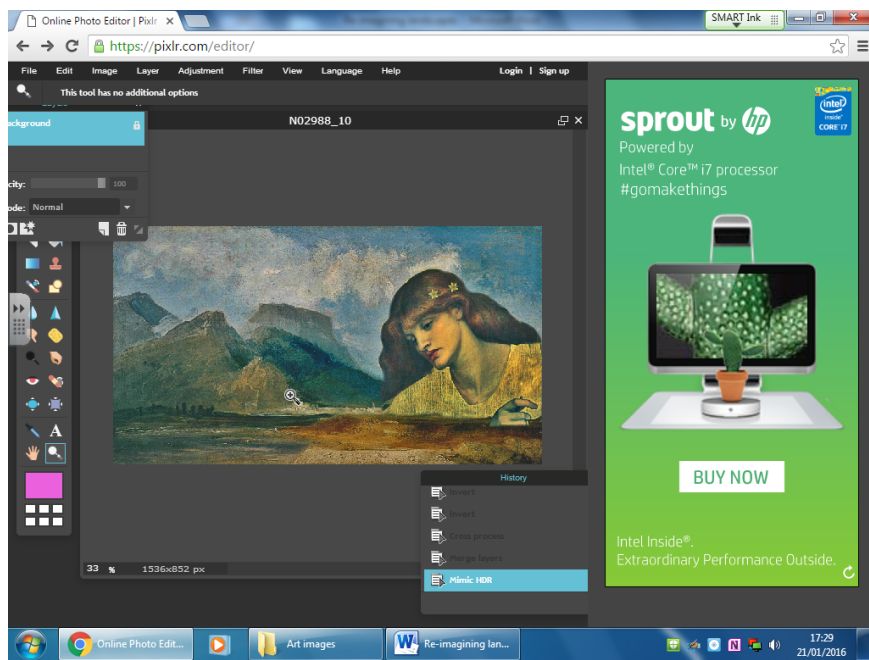
These apply effects in a similar way to adjustments – you can apply them to individual layers or a whole flattened image.



- Try out different ones.

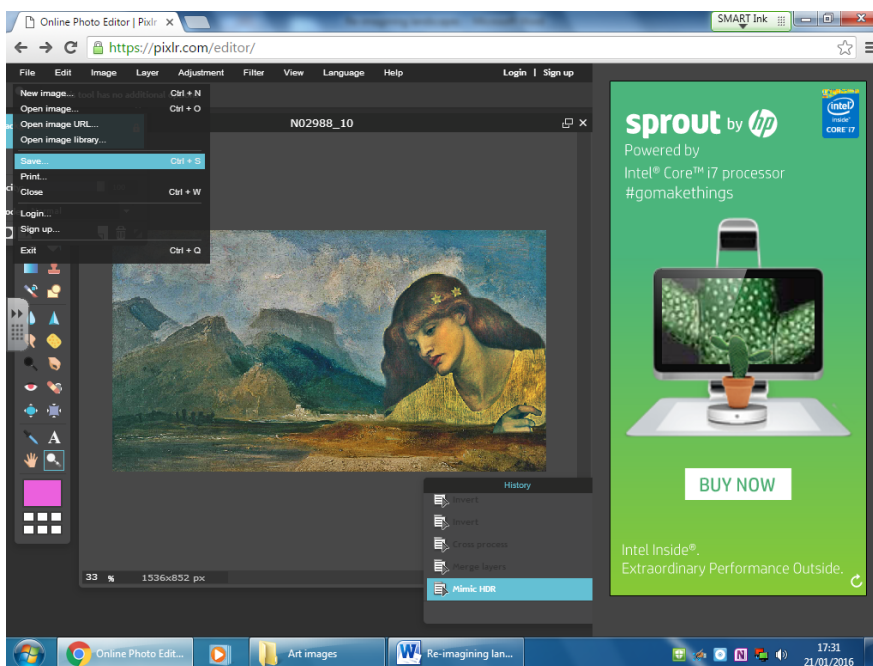


This was my favourite for this image!

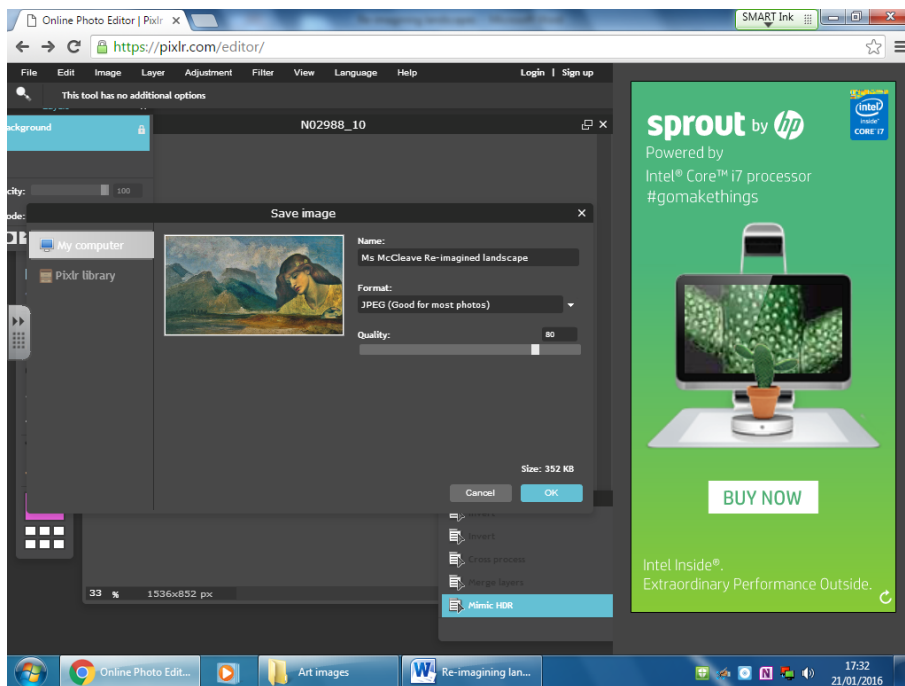


Saving your document

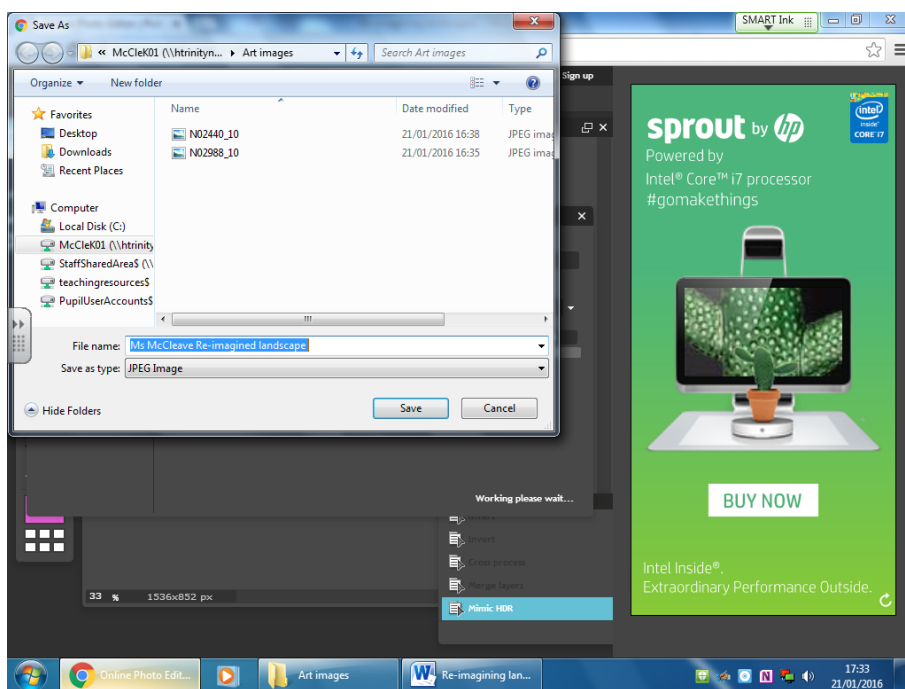
- File drop down menu - save



- Make sure **My computer** is selected on the left
- Name file so that it can be easily identified e.g. Keeleyreimaginedlandscape

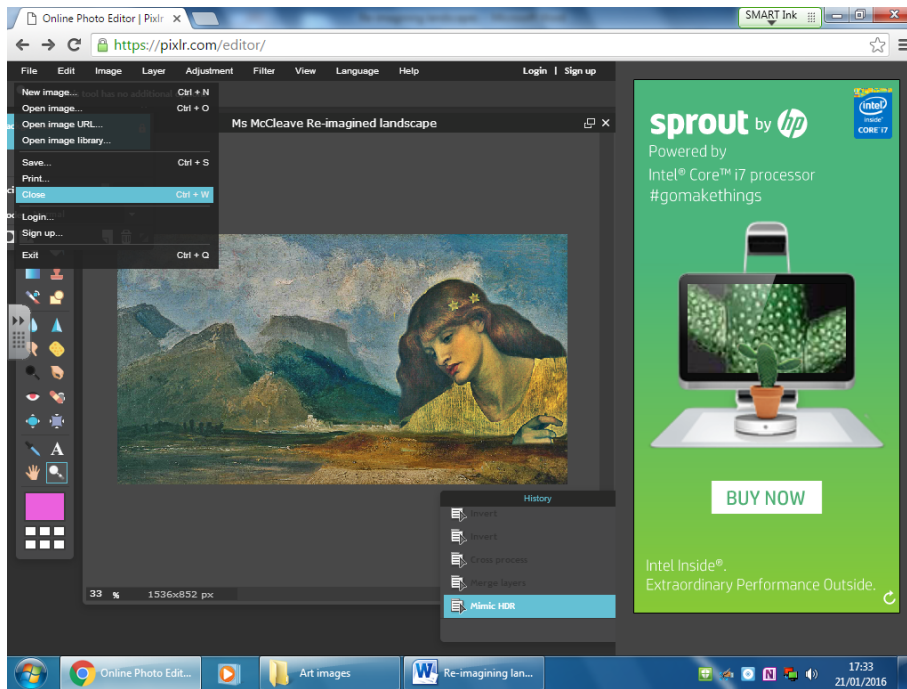


- Save in the images file set up at the beginning



To close image

- File drop-down menu – close



To exit pixlr

- File drop-down menu –exit

