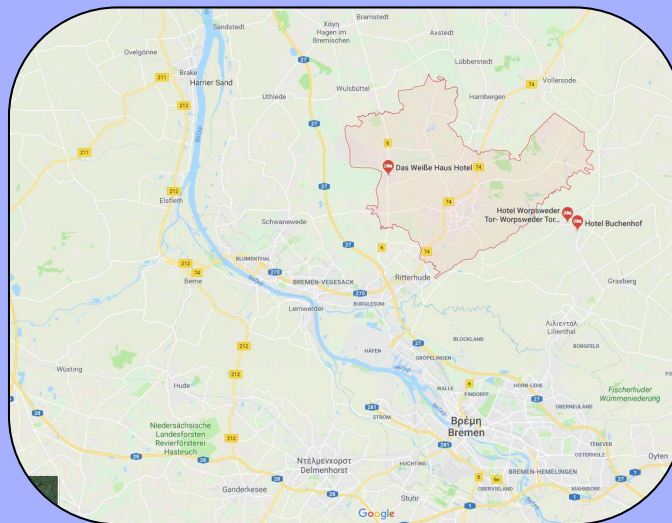


Visiting Osterholz-Scharmbeck & Bremen

1st EPAL Chiou, Greece



Co-funded by the
Erasmus+ Programme
of the European Union

“Cloud Computing in the European schools” Project: 2017-1-ES01-KA202-038471

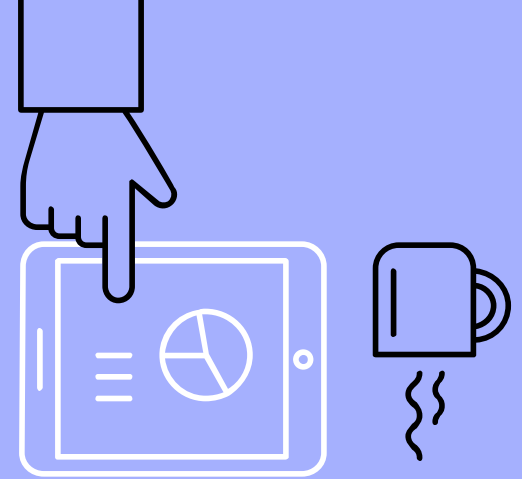
BBS

Osterholz-Scharmbeck

The **Vocational School of Osterholz Scharmbeck**, educates full-time students and along with local companies, around 2300 young people are educated in the following vocational areas



- Economy and management
- Metal work
- Mechanics
- Electronics
- Architectural technologies
- Wood workmanship
- Colour and interior design
- Hygiene
- Pedagogy and social education
- Care
- Nutrition and domestic economy



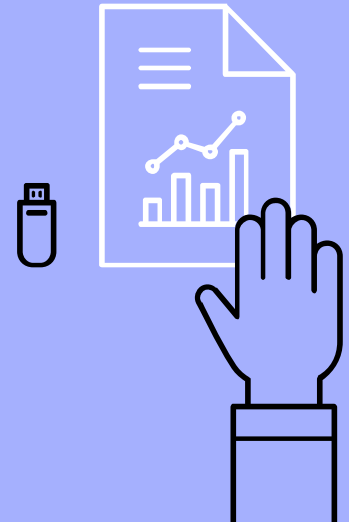
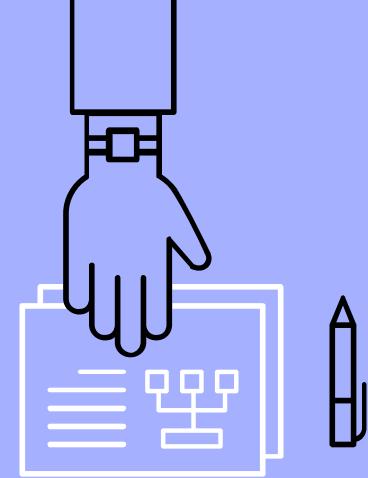
Osterholz-Scharmbeck

Osterholz-Scharmbeck is a town and the capital of the district of Osterholz, in Lower Saxony, Germany. Osterholz-Scharmbeck is situated between the cities of Bremen and Bremerhaven.

Geography

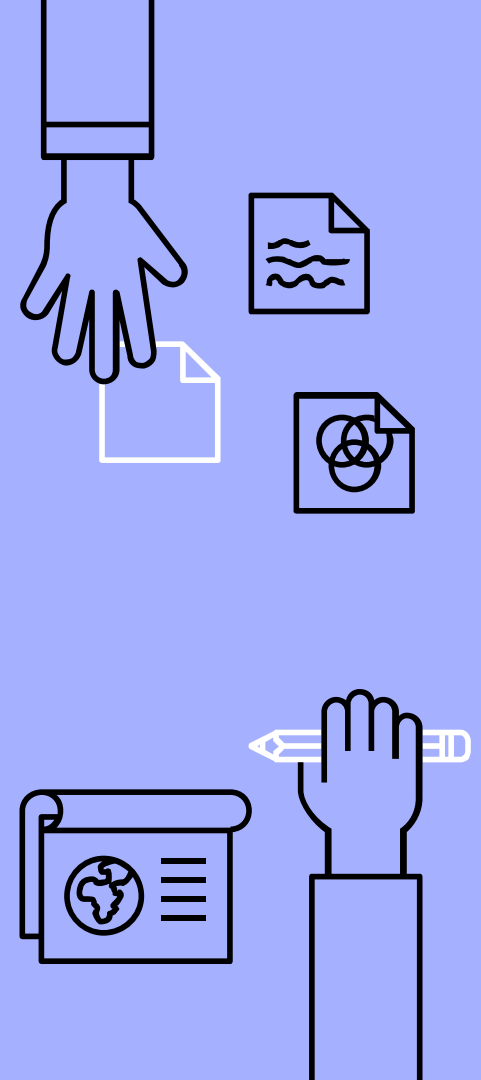
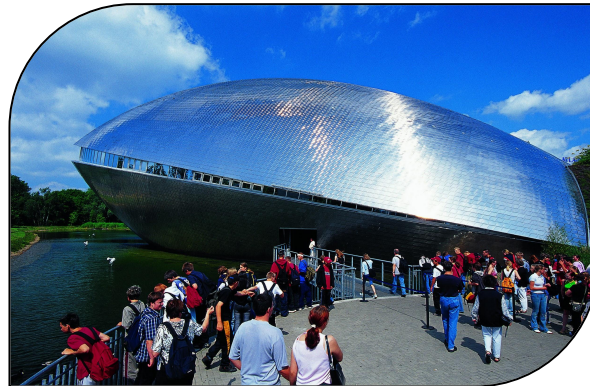
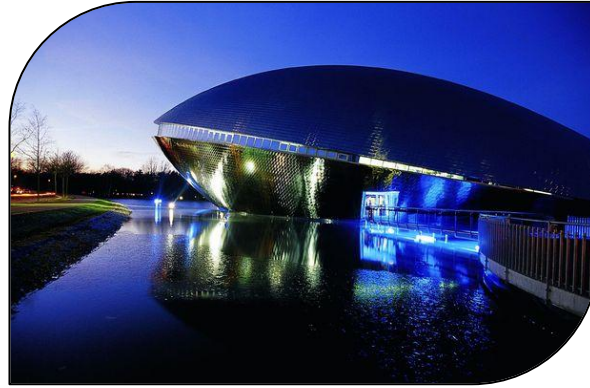
Neighbouring places

- Bremen (22 km)
- Delmenhorst (31 km)
- Achim (37 km)
- Bremerhaven (39 km)
- Brake (40 km)
- Zeven (41 km)
- Bremervörde (43 km)
- Nordenham (46 km)
- Oldenburg (48 km)
- Rotenburg (50 km)



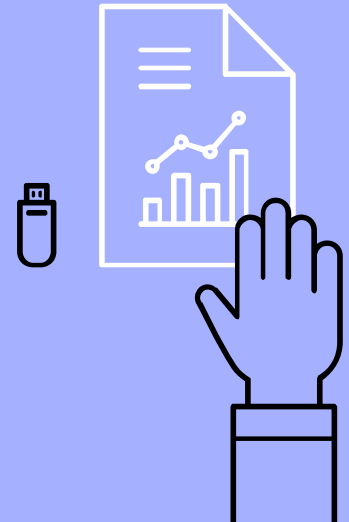
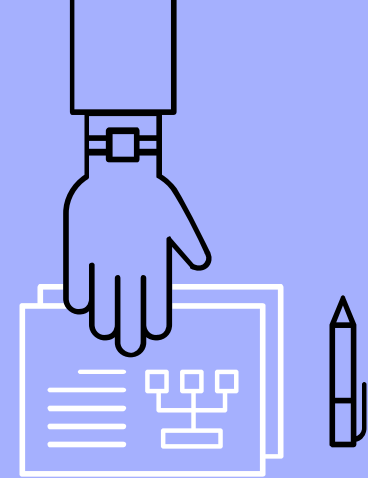
Universum Science Center

The **Universum Bremen** is a science museum in Bremen, Germany. Visitors are encouraged to interact with most of the approximately 250 exhibits. It receives an average of 450,000 visitors annually.



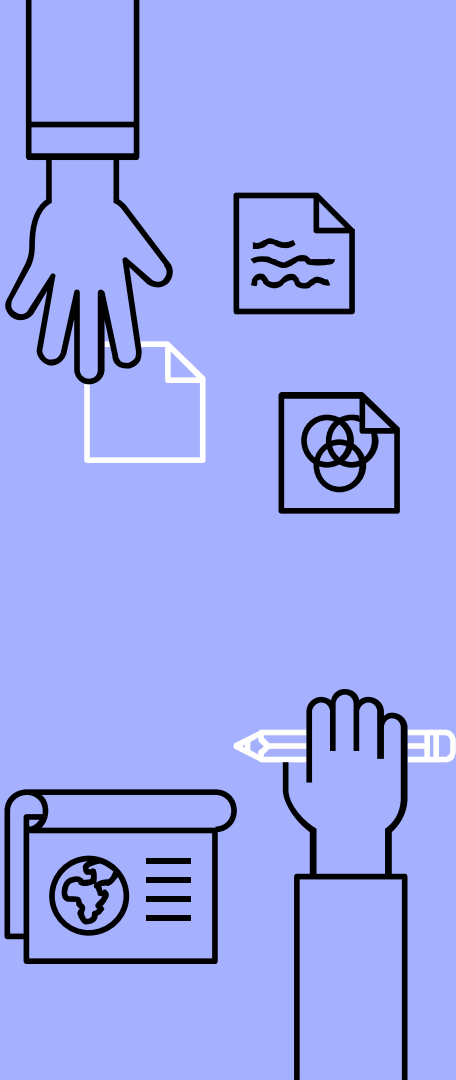
Overseas Museum

The **Overseas Museum** in Bremen (German: *Übersee Museum Bremen*) is a Natural History and ethnographic museum in northern Germany. In an integrated exhibition of Nature, Culture and Trading, the museum presents aspects of overseas regions with permanent exhibitions relating to Asia, South Pacific/Oceania, Americas and Africa. Since 1993, the building itself is protected by the monument protection act.



Focke Museum

The **Focke Museum** is the museum of history and history of art for the city and state of Bremen. It was formed in 1924 by the merger of a museum of industry and commerce and the previous historical museum, and is named for the founder of the latter, Johann Focke (1848–1922), a Bremen privy councillor and father of Henrich Focke.



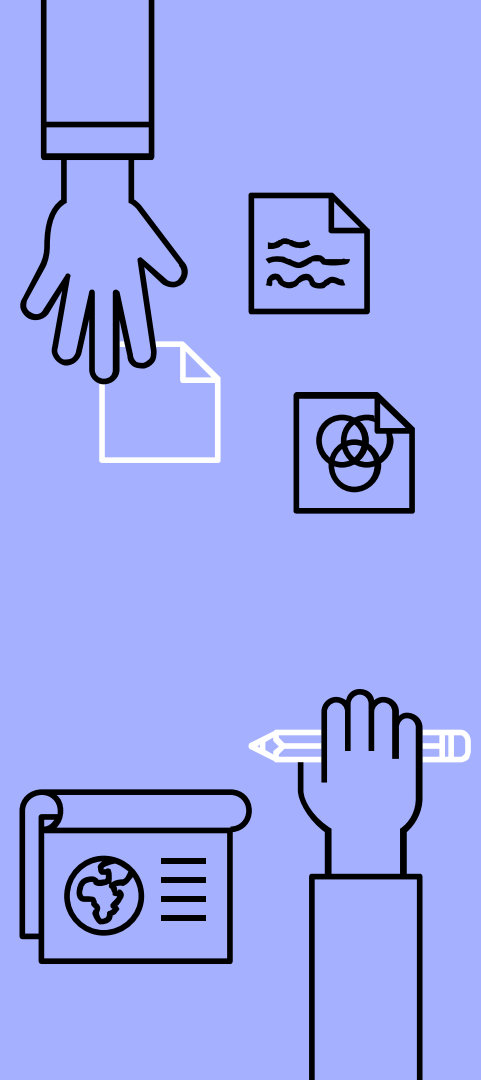
Böttcherstraße

Böttcherstraße is a street in the historic centre of Bremen, Germany. Only about 100 m (330 ft) long, it is famous for its unusual architecture and ranks among the city's main cultural landmarks and visitor attractions. Most of its buildings were erected between 1922 and 1931, primarily as a result of the initiative of Ludwig Roselius, a Bremen-based coffee-trader, who charged Bernhard Hoetger with the artistic supervision over the project.



Bremen Town Hall

The **Bremen City Hall** is the seat of the President of the Senate and Mayor of the Free Hanseatic City of Bremen. It is one of the most important examples of Brick Gothic architecture in Europe. Since 1973, it is protected by the monument protection act. In July 2004, along with the Bremen Roland, the building was added to the list of UNESCO World Heritage Sites.



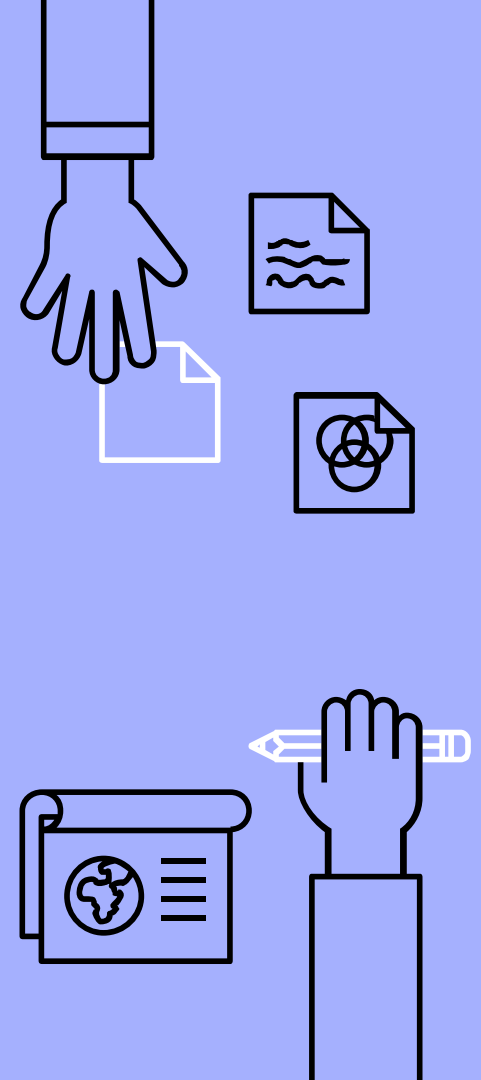
Schnoor

Schnoor is a neighbourhood in the medieval centre of the city of Bremen, and the only part of it that has preserved a medieval character. The neighbourhood owes its name to old handicrafts associated with shipping.



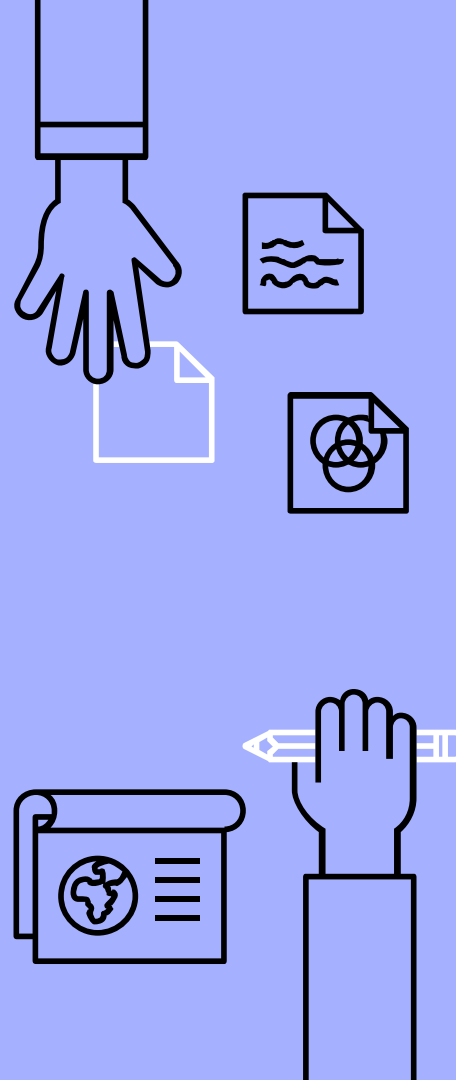
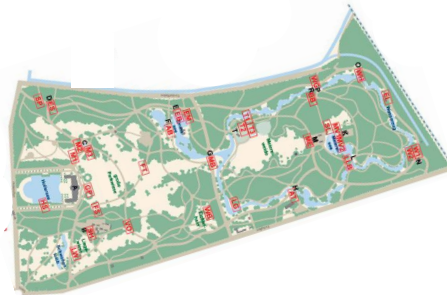
Bremen Hauptbahnhof

Bremen Hauptbahnhof (German for *Bremen main station*) is a railway station in the city of Bremen in northwestern Germany. It is the most important rail station for both city and state of Bremen, InterCityExpress, Intercity, EuroCity, CityNightLine and DB NachtZug services call at the station, which is situated to the Northeast of the city centre. The train services are operated by Deutsche Bahn, NordWestBahn, Metronom and Erixx.



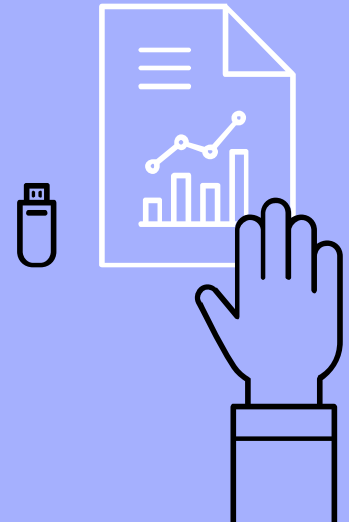
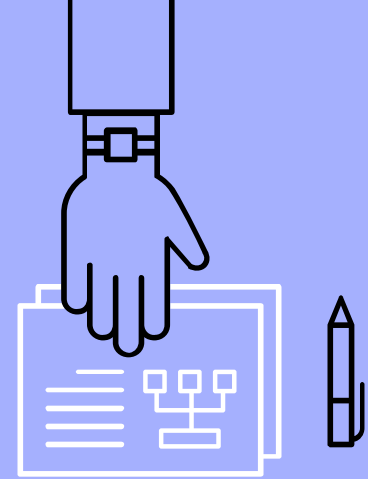
Buergerpark

The **Bürgerpark** is one of Germany's best-maintained country parks. Together with the adjacent woodland, it covers an area of 202 hectares.

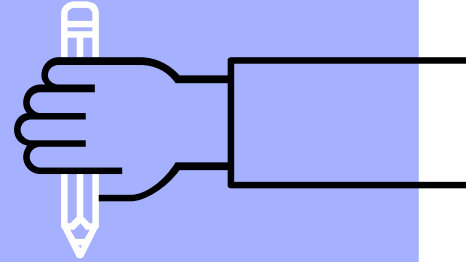


St. Peter's Cathedral

Bremen Cathedral dedicated to St. Peter, is a church situated in the market square in the center of Bremen, in northern Germany.



Thank you!

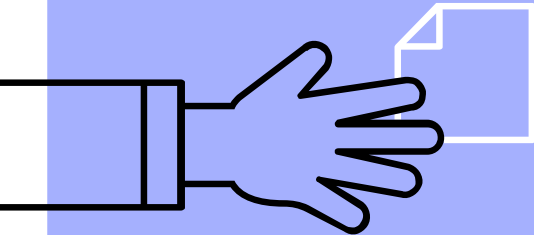


1st EPAL Chiou, Greece

- Anna Maria Augousti
- Antonis Ekatommatas
- Konstantinos Koufaelas
- Despoina Marti

“Cloud computing in the European schools”

Project: 2017-1-ES01-KA202-038471



SOURCES

<https://en.wikipedia.org/wiki/Osterholz-Scharmbeck>

<http://www.bbs-ohz.de/englisch/>

https://en.wikipedia.org/wiki/Universum_Science_Center

https://en.wikipedia.org/wiki/Overseas_Museum,_Bremen

https://en.wikipedia.org/wiki/Focke_Museum

<https://en.wikipedia.org/wiki/B%C3%B6ttcherstra%C3%9Fe>

https://en.wikipedia.org/wiki/Bremen_City_Hall

<https://en.wikipedia.org/wiki/Schnoor>

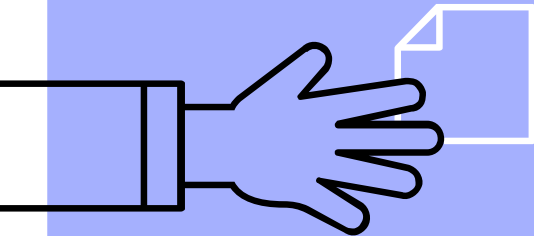
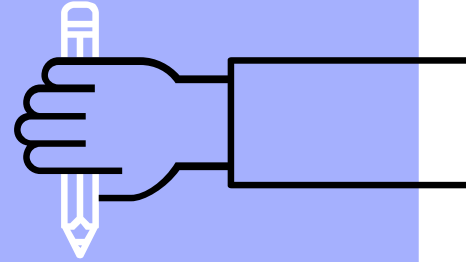
https://en.wikipedia.org/wiki/Bremen_Hauptbahnhof

<https://www.bremen-tourism.de/buergerpark>

https://en.wikipedia.org/wiki/Bremen_Cathedral

https://en.wikipedia.org/wiki/Kunsthalle_Bremen

<http://www.slidescarnival.com/roderigo-free-presentation-template/2154>



Co-funded by the
Erasmus+ Programme
of the European Union