

# PaaS: Professional Competence "Use GIT to work collaboratively on the Cloud "

Questionnaire

\*Obligatorio

## Project: 2017-1-ES01-KA202-038471 "Cloud Computing in the European schools"



1. 1.- Do you know the answer to the question "GIT installation: what is the name of a GIT client for Windows?" (see the options in the next question) \*

*Marca solo un óvalo.*

Yes

No

2. GIT installation: what is the name of a GIT client for Windows?

*Selecciona todos los que correspondan.*

Git Bash

Git client

Repository GIT

MacGIT

3. 2.- Do you know the answer to the question "GIT commands. Choose the right commands" (see the options in the next question) \*

*Marca solo un óvalo.*

Yes

No

4. GIT commands. Choose the right commands

*Selecciona todos los que correspondan.*

Git checkout: allows to switch among branches

GIT log: shows the files which have changed

GIT add: adds files/folders to the stage

GIT branch RAMA2: lists files on the branch RAMA2

5. **3. Do you know the answer to the question "README.md. What is this file used for?" (see the options in the next question) \***

*Marca solo un óvalo.*

Yes

No

6. **README.md. What is this file used for?**

*Selecciona todos los que correspondan.*

It must contain information about the technology used in the project

It is in a special folder called "conf".

It may used to show for describing the project

It is not a GIT file

7. **4. Do you know the answer to the question "GitHub: operations" (see the options in the next question) \***

*Marca solo un óvalo.*

Yes

No

8. **GitHub: operations**

*Selecciona todos los que correspondan.*

git clone allows to upload a repository to Github

git pull allows to update the local repository

git push updates the local repository

git fork give Github users the possibility to copy other Github repositories in their own Github account

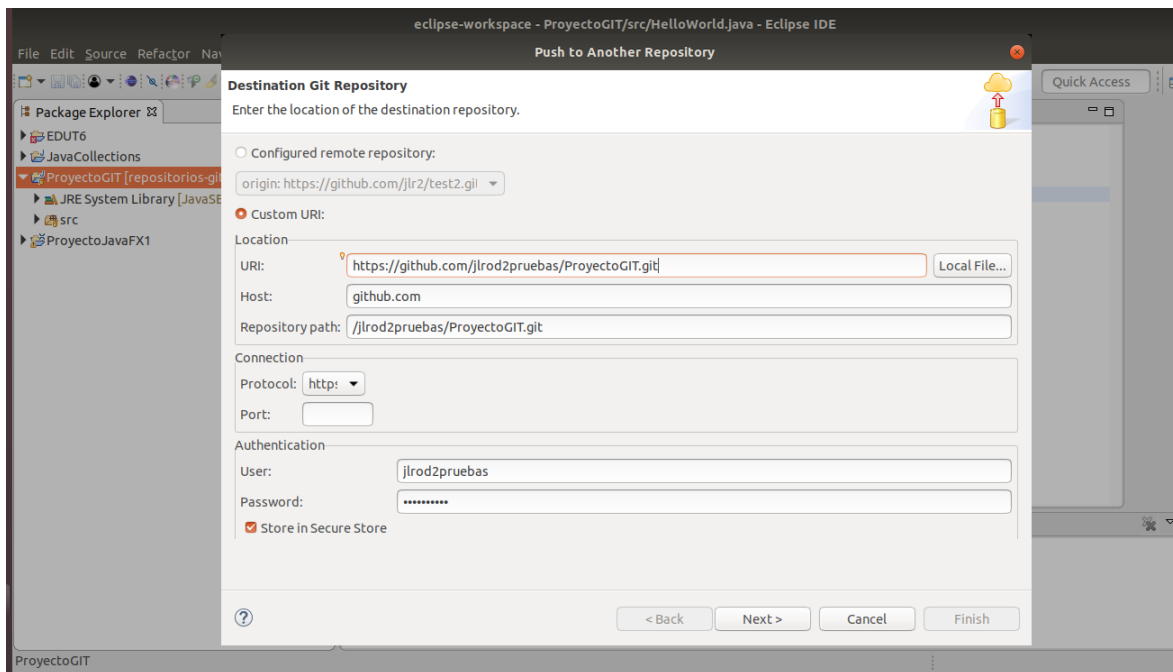
9. **5. Do you know the answer to the question "GIT in Eclipse -no 1 and 2" (see the options in the next question) \***

*Marca solo un óvalo.*

Yes

No

**GIT in Eclipse - no 1**



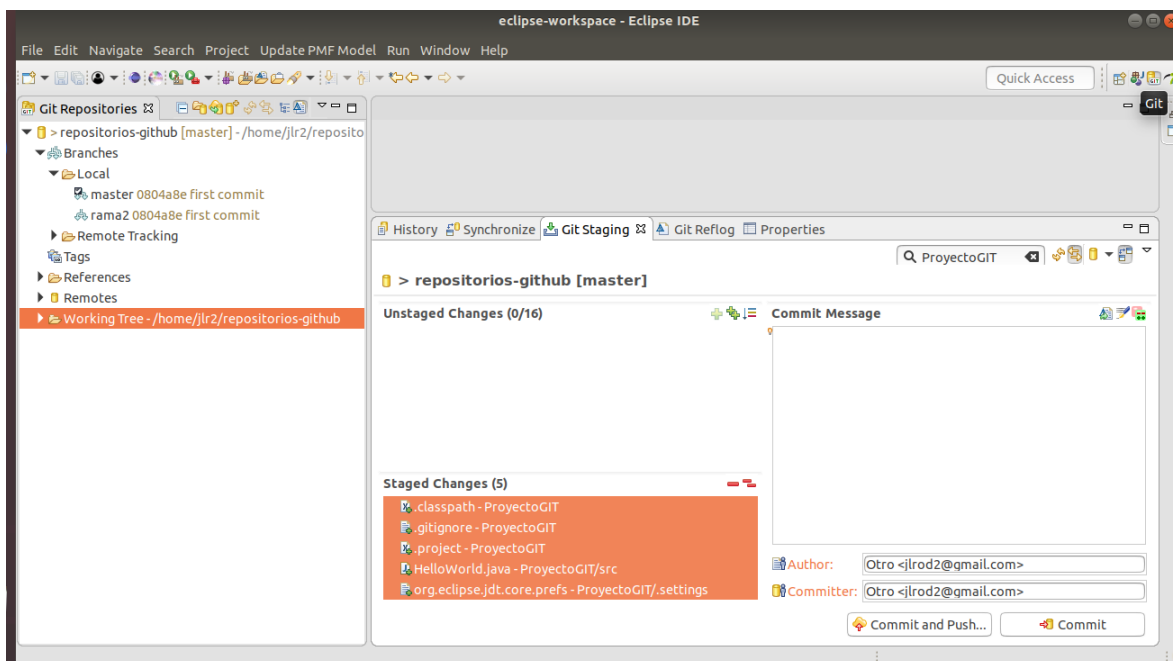
10. The figure shows the process to make a push to a remote Github repository

*Marca solo un óvalo.*

Yes

No

## GIT in Eclipse - no 2



11. The figure shows the files uploaded in GitHub

*Marca solo un óvalo.*

Yes

No

