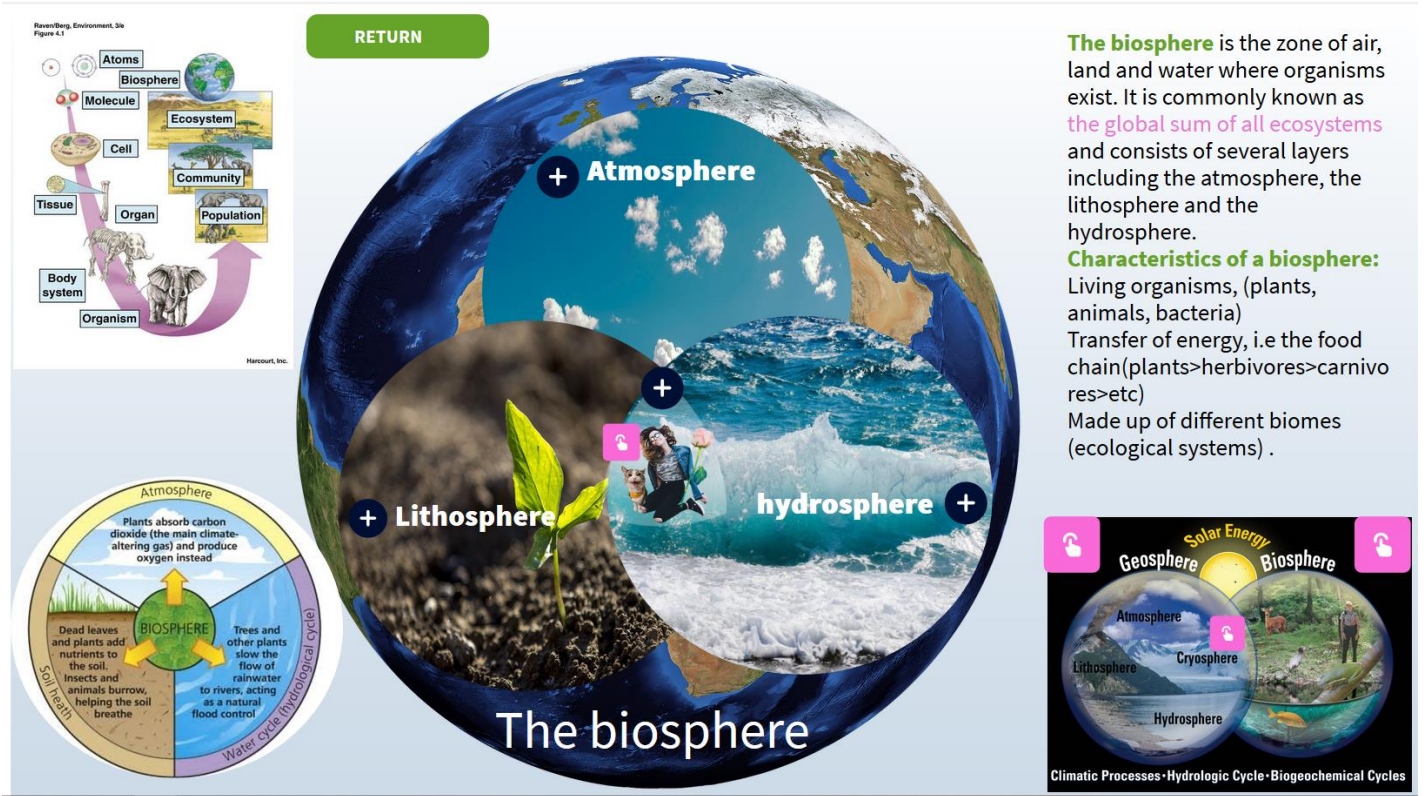


ENVIRONMENTAL SPHERE :



The biosphere is the zone of air, land and water where organisms exist. It is commonly known as **the global sum of all ecosystems** and consists of several layers including the atmosphere, the lithosphere and the hydrosphere.

Characteristics of a biosphere:
 Living organisms, (plants, animals, bacteria)
 Transfer of energy, i.e the food chain (plants>herbivores>carnivores>etc)
 Made up of different biomes (ecological systems) .

1.The atmosphere:

1. Complete the definition: it's the outer that surrounds the It is formed by ; that protects the planet from outspace like flares or small Flying in space. We can find in this layer.
2. This layer helps:
 - a.
 - b.
3. Depending on how high we get, the composition of the atmosphere changes. There are 5 main layers:
 - a. :from sea level to 10 km high; it's the From the earth; it contains the air we breathe; fly there to avoid turbulence; there are clouds; weather phenomena occur as well:,, and
 - b. : from 10 to Km; contains the ; protects the planet from harmful
 - c. : from to 85 km; the layer of the atmosphere; that can be down -90°C; we can see : meteors that travel through space and heat this layer, burn down burn day leaving a tail behind them.
 - d. : from 85 to 500km: the of all 5 levels; air temperature on the is kept constant thanks to it; temperature can rise till°C; the Orbits the earth here; the northern and southern occurs here.

- e.: from 500 to 10,000km; is very thin; it is composed of only and; it's the outermost limit with space; it protect us against solar flares; orbit the earth there.

2. The hydrosphere:

1. The major part of our planet is covered with water; that why our planet is nicknamed the
.....

2. What is the definition of the hydrosphere?
.....

4. Water exist in different forms; can you complete this chart? (forms and examples)

5. What is the percentage of water on the earth?
6. What is the percentage of marine / saline water?
7. What is the percentage of fresh water fit for drinking?:
8. Where is the major part or fresh water locked in?
.....
9. Where there is water, there is
10. What is the percentage of water in the human body?
11. How long can we life without water?

3. The lithosphere:

1. Solid and rigid of our planet; crust in the upper part of our that contains rigid rocks.

2. There are 2 lithospheres:

a. The lithosphere: under the

b. The lithosphere.

3. This second lithosphere is divided into 7

a. b.....

c..... d.....

e..... f.....

g.....

4. The happen where Shift or collide.

4. The cryosphere:

1. Parts of the earth where water is found in its, form.
2. List the forms:
.....
3. Which are only part of the cryosphere in the winter months?
.....
4. Why can we say the cryosphere impact everything on earth? : 90%
.....
5. What is the impact of global warming?;
.....
6. To sum up; less snow and ice can affect:
a. b.....
c..... d.....
Which impacts
7. Which animals rely on the cryosphere for habitats?
8. Who or what relies on the melting of the ice and snow for fresh water?
.....
9. Since 1979, summer ice in the Artic ice cap has been getting
It's an important measure for our planet.

THE GEOSPHERE:

1. The lighter layers are composed of And form the
2. The heavier layers form the Layer.
3. Complete:

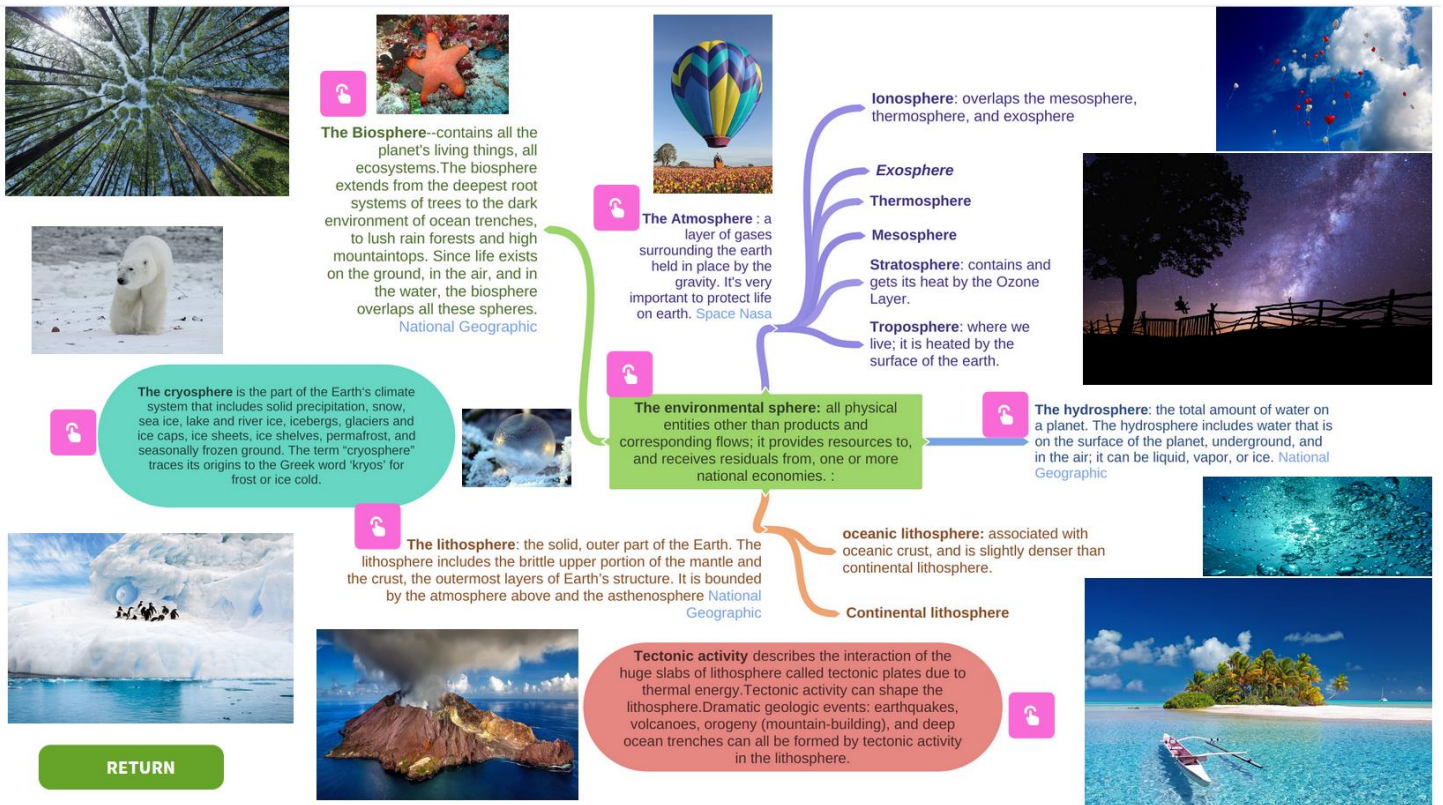
The core	The mantle	The crust

THE BIOSPHERE:

Where occurs on earth. Made up of three parts;

1. **The atmosphere** the living organism use it for
 - a. What gases does it contain?
 - b. What are its 2 roles?
2. **The hydrosphere:** portion of the planet which support life.
 - a. Plays an important part in formation.
3. **The lithosphere:** the (which doesn't include the core and the mantle because they don't support)
 - a. part of the biosphere.
 - b. Soil and organic waste to support life. Land provide and protection for animals , anchor to
4. The biosphere is the worldwide sum of, the zone of life on earth that support biodiversity; a closed ecosystem.

The exception is energy which is an open system.



(France – Brigitte Collomb)