



Erasmus+ Programme

"Destination: Happiness!"

2019-1-PL01-KA229-065687

6th Senior High School of Kavala

Module III: Research

"Photochemical Pollution as part of Air Pollution"

**Masala Despoina, Kourouvei Marithea,
Merkouropoulou Despoina, students of the 1st Grade**





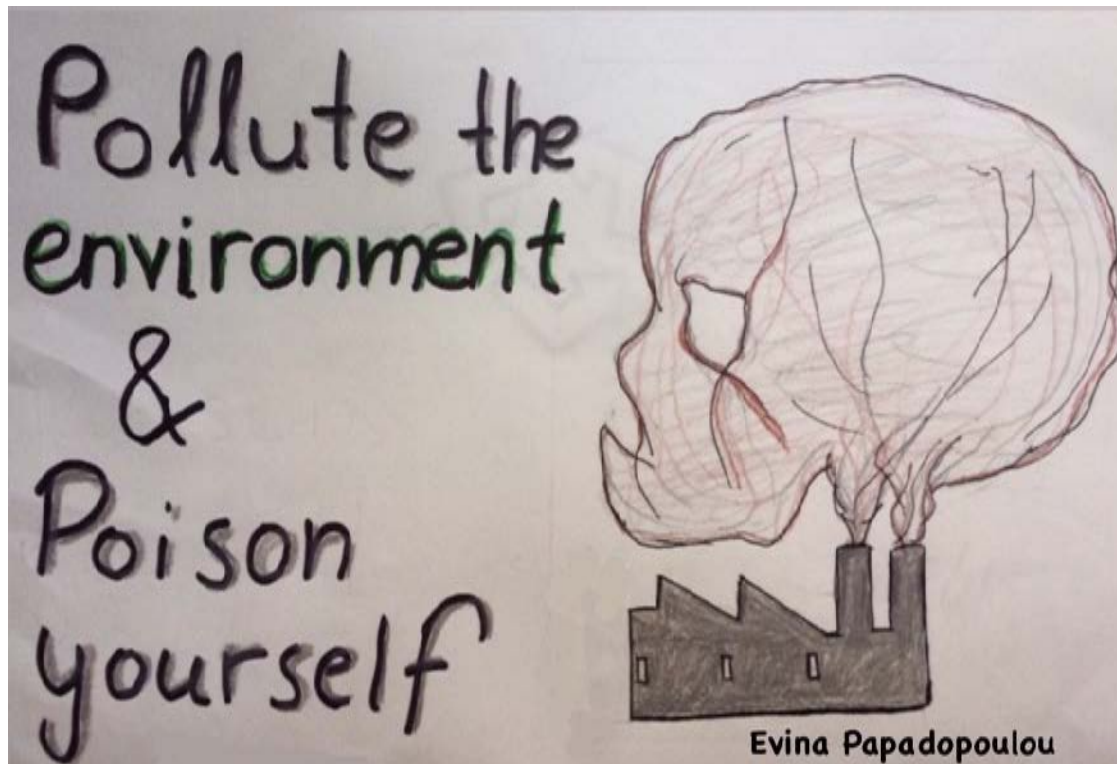
Photochemical Pollution

Photochemical pollution occurs when primary air pollutants (nitrogen dioxide, carbon monoxide) emitted by industries and transportation react with the atmospheric oxygen and produce secondary air pollutants (ozone, hydrocarbon) in accordance with the high solar radiation. As a result, it is characteristic in big cities such as Los Angeles and Athens that receive high solar radiation.



Repercussions

This phenomenon may have detrimental effects on human life. Asthma, bronchitis, emphysema and even death are some of its consequences.



References

- [1. https://el.wikipedia.org/wiki/%CE%A6%CF%89%CF%84%CE%BF%CF%87%CE%B7%CE%BC%CE%B9%CE%BA%CF%8C%CE%BD%CE%AD%CF%86%CE%BF%CF%82](https://el.wikipedia.org/wiki/%CE%A6%CF%89%CF%84%CE%BF%CF%87%CE%B7%CE%BC%CE%B9%CE%BA%CF%8C%CE%BD%CE%AD%CF%86%CE%BF%CF%82)
- [2. https://www.google.com/search?q=%CF%86%CF%89%CF%84%CE%BF%CF%87%CE%B7%CE%BC%CE%B9%CE%BA%CF%8C+%CE%BD%CE%AD%CF%86%CE%BF%CF%82+%CE%91%CE%B8%CE%AE%CE%BD%CE%B1&tbm=isch&ved=2ahUKEwjgw7eattfHyAhXEu6QKHWwhAxgQ2-cCegQIABAA&oq=%CF%86%CF%89%CF%84%CE%BF%CF%87%CE%B7%CE%BC%CE%B9%CE%BA%CF%8C+%CE%BD%CE%AD%CF%86%CE%BF%CF%82+%CE%91%CE%B8%CE%AE%CE%BD%CE%B1&gs_lcp=CgNpbWcQAzIHCCMQ7wMQJzoECAAQHID8T1ixamCJb2gAcAB4AIABkAKIAYsUkgEFMC43LjeYAQCgAQGqAQond3Mtd2l6LWltZ8ABAQ&sclient=img&ei=r05YeDMA8T3kgXswozAAQ&bih=754&biw=1536&rlz=1C1GCEA_enGR876GR876#imgrc=-UDCfRb_1EX4hM&imgdii=cgbpDtp1PFJ8LM](https://www.google.com/search?q=%CF%86%CF%89%CF%84%CE%BF%CF%87%CE%B7%CE%BC%CE%B9%CE%BA%CF%8C+%CE%BD%CE%AD%CF%86%CE%BF%CF%82+%CE%91%CE%B8%CE%AE%CE%BD%CE%B1&tbm=isch&ved=2ahUKEwjgw7eattfHyAhXEu6QKHWwhAxgQ2-cCegQIABAA&oq=%CF%86%CF%89%CF%84%CE%BF%CF%87%CE%B7%CE%BC%CE%B9%CE%BA%CF%8C+%CE%BD%CE%AD%CF%86%CE%BF%CF%82+%CE%91%CE%B8%CE%AE%CE%BD%CE%B1&gs_lcp=CgNpbWcQAzIHCCMQ7wMQJzoECAAQHID8T1ixamCJb2gAcAB4AIABkAKIAYsUkgEFMC43LjeYAQCgAQGqAQond3Mtd2l6LWltZ8ABAQ&sclient=img&ei=r05YeDMA8T3kgXswozAAQ&bih=754&biw=1536&rlz=1C1GCEA_enGR876GR876#imgrc=-UDCfRb_1EX4hM&imgdii=cgbpDtp1PFJ8LM)