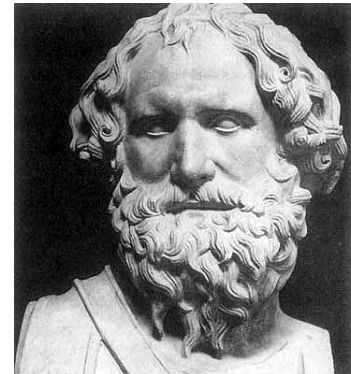


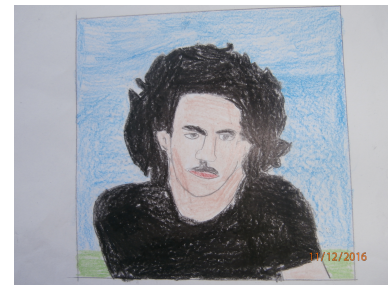
1. Archimedes came up with the Archimedean screw pump to transfer water from a low-lying body of water to a higher one.

- A True
- B False



2. Dr Constantine Daskalakis is a Mathematician. He solved Rubik's Cube.

- A True
- B False



3. Pavlos Santorinis, civil engineer and physicist, invented the radar (1942) which could spot enemy aircraft within a long radius.

- A True
- B False



4. Saint Methodius invented a Slavic alphabet based on Latin characters.

- A True
- B False



5. To help senior citizens Konstantinos Giannopoulos founded an NGO for them.

- A True
- B False



6. Skopelitis, Valsamides, Christoulia are three architects who came up with an innovative idea for a viable solution to combat homelessness.

- A True
- B False



7. In 313, Constantine the Great and Licinius issued the Edict of Milan decriminalizing Christian worship. As a result, people in the Roman Empire were not allowed to believe in any religion they chose.

- A True
- B False



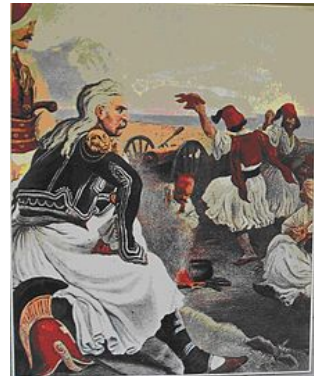
8. Dr George Papanikolaou invented the cervical smear test which is a medical examination for early signs of cancer.

- A True
- B False



9. **Theódoros Kolokotrónis (1770-1843) was a prominent Greek patriot in the War of Greek Independence (1821–30) and a member of the Greek clandestine revolutionary society Philiki Etairia.**

- A True
- B False



10. **George Pavlides is the inventor of the ophthalmokinesis test (PAVLIDIS TEST) which allows, even from a pre-school age, the diagnosis of dyslexia and attention deficit disorder.**

- A True
- B False

