

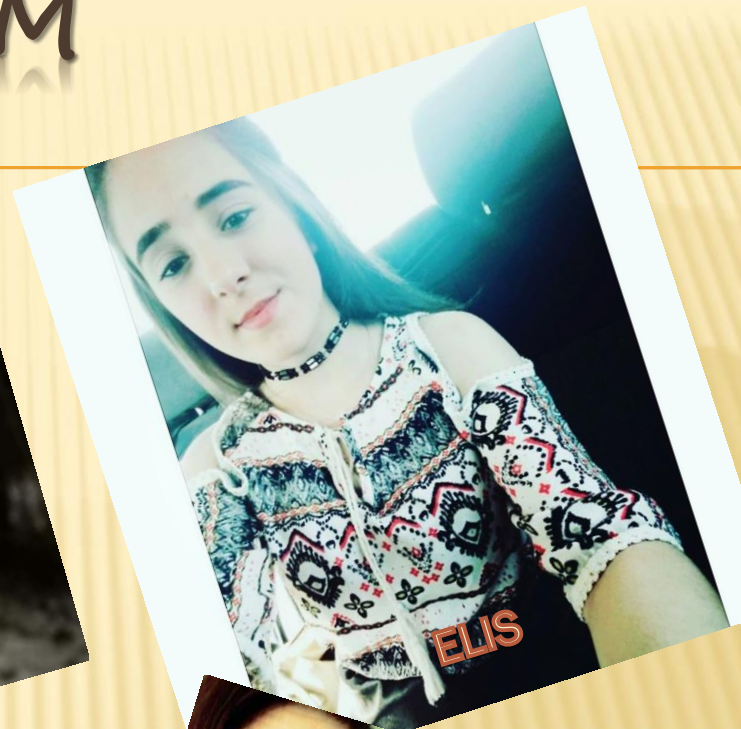


STUDENT MINI-COMPANY
VOCATIONAL HIGH SCHOOL OF VETERINARY MEDICINE
„PROF. DR. GEORGI PAVLOV” DOBRICH, BULGARIA

TECHNO JUNIOR



OUR TEAM



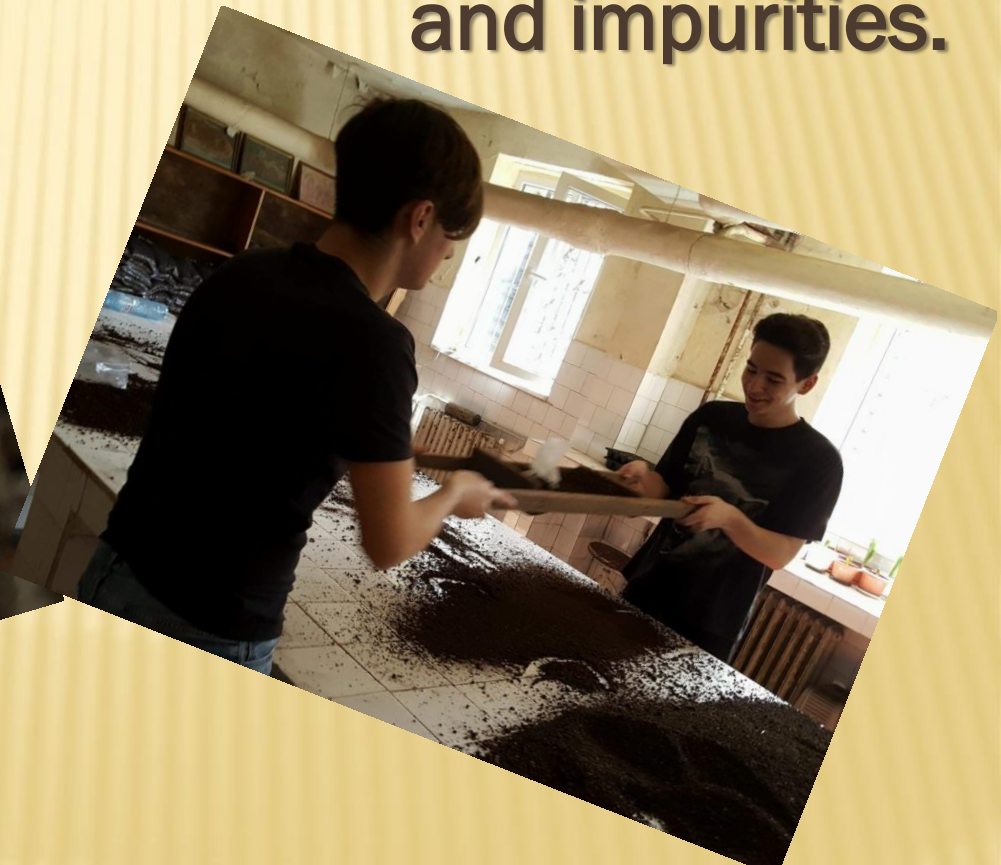
PRODUCTION

- **Red Californian Worm Natural Fertilizer**
- **Liquid biofuel**
- **Biocosmetics products**



NATURAL FERTILIZER

- We produce a very high quality organic fertilizer with a moisture content of 45-50%, odorless and impurities.



LIQUID BIOFUEL

- From the Californian worm manure, we produce a liquid biofuel to boost the growth of all kinds of plants.



BIOCOSMETICS

- We also make cosmetic products such as lip gloss, which contains only organic products - coconut oil, cocoa butter, mandarin and orange oil, vitamin E, bioconderant and hydrating agent.



UNITS

- Each company member owns one share of 15 leva. 8 partners are involved (President, Marketing, Finance, Production and Consultant).



PRESIDENT / ADMINISTRATIVE TEAM



- Controls all company activities
- Appoints and controls managers
- Participates in the preparation of the business plan
- Directs all general meetings
- Works weekly with other executives for: view company activities and reports, solving personal, manufacturing, and marketing issues

MARKETING



- **Accepts administrative responsibility in the absence of the president**
- **Carries out sales training for all members of the company**
- **Control inventory**
- **Manages accurate and timely reports on the sale of each product and reports revenue from sales to the finance department**
- **Compiles and implements the marketing plan**
- **Coordinate the ad**
- **Identifies individual sales quotas and offers incentives to sell**
- **Carries out a marketing research for new products or services**

FINANCE



- Defines the financial goals of the company
- Appoint the necessary assistants
- Compiles financial statements for general meetings
- Helps to collect data for the annual report
- Receives and distributes all the money in the company
- Responsible for deposits
- Keeps the financial statements

PRODUCTION (ALL MEMBERS)



- Controls the production process
- Appoint the necessary assistants
- Produces production reports for the company's general meetings
- Maintains the necessary supplies of all materials necessary
- Drafts the production plan
- Calculates production costs
- Draws up a safety program
- Produces a product quality control system
- Draws up a production plan and defines the production objectives

HUMAN RESOURCES

- Compiles a compensation plan
- Appoint the necessary assistants
- Keeps copies of all documents important to the company
- Helps in compiling and sending the annual report
- Keeps minutes of meetings of the board of directors

CONSULTANT



- Zhivka Raykova

CULTIVATION TECHNOLOGY FOR CALIFORNIA WORMS

- I. Eating
- II. Earthing
- III. Reproduction



EATING

- WITHIN 18-20 DAYS BETWEEN THE TECHNOLOGICAL BEDS WITH CALIFORNIA WORMS IS PLACED 5-6 CM. FOOD.
- IT IS NOT APPROPRIATE TO FEED WORMS MORE OFTEN, BECAUSE THEN THE BIO-HUMMUS IS NOT HOMOGENEOUS; THERE ARE IMPURITIES OF UNPROCESSED MANURE.
- HOWEVER, IF IT IS DELAYED AFTER THESE 20 DAYS, IT IS LIKELY THAT THE WORMS WILL LEAVE THE BED AND ESCAPE DUE TO LACK OF FOOD.

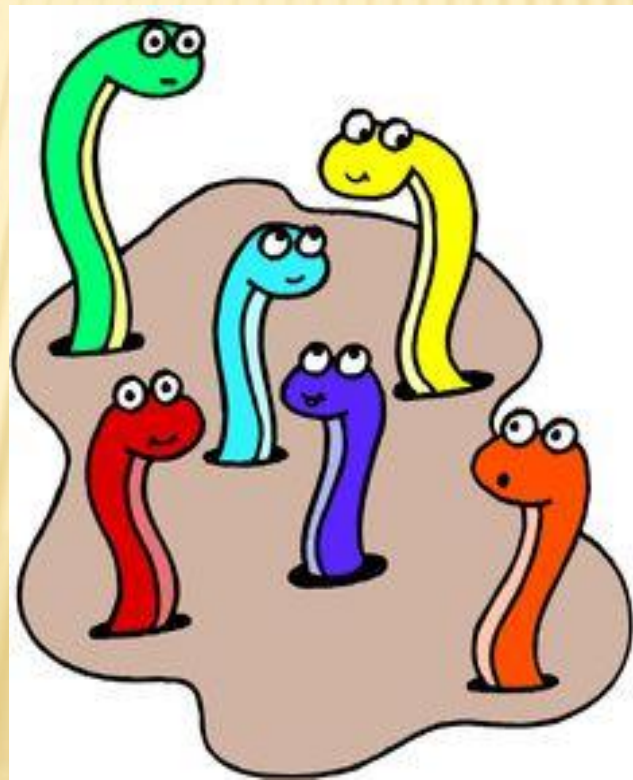
EARTHING

- It is important for the worms to have good sunshine, so it is necessary to put a thicker layer of food (10-12 cm) in the last meal (November), which will protect the worms from freezing.

REPRODUCTION

- Due to high fertility and rapid population growth every 3-4 months, the number of beds is doubled.
- This is done by removing $\frac{1}{2}$ of the worms from a lesion and moving them to a new one. The worms that remain in the old bed are spread evenly in it, then fed with 5-6 cm of fertilizer.

Technologically from one bed 350-450 liters of biohumus are produced. It is taken once a year. This product is being studied in the 'Department of Agriculture'



***THANK YOU FOR
YOUR ATTENTION!***

