

EAUX  
SOUTERRAINES

# SUBMARINE KARSTIC SPRINGS OF PORT-MIOU

DISCOVER THE EFFECTS OF CLIMATE CHANGE ON COASTAL DRINKING  
WATER RESOURCES

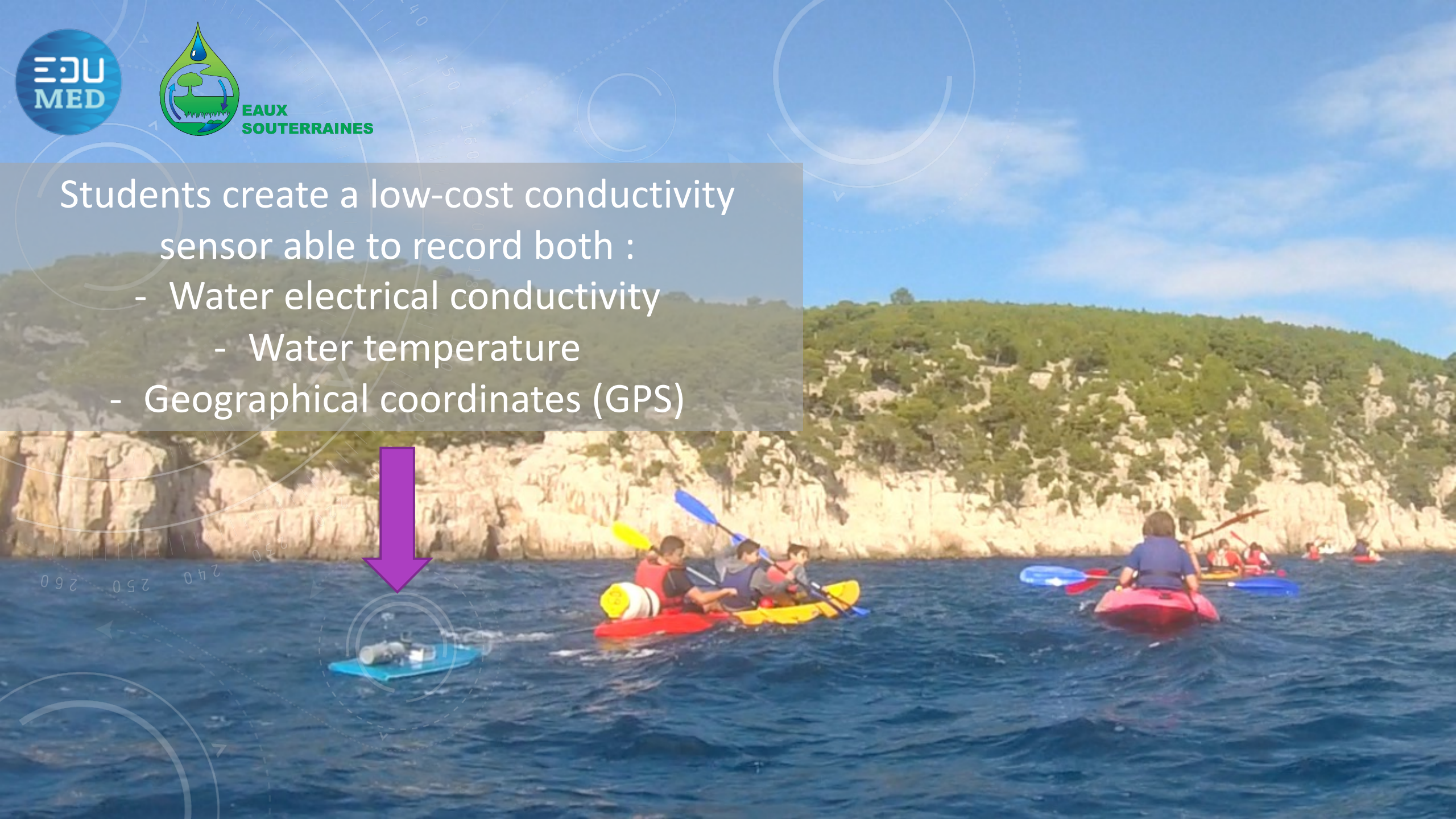


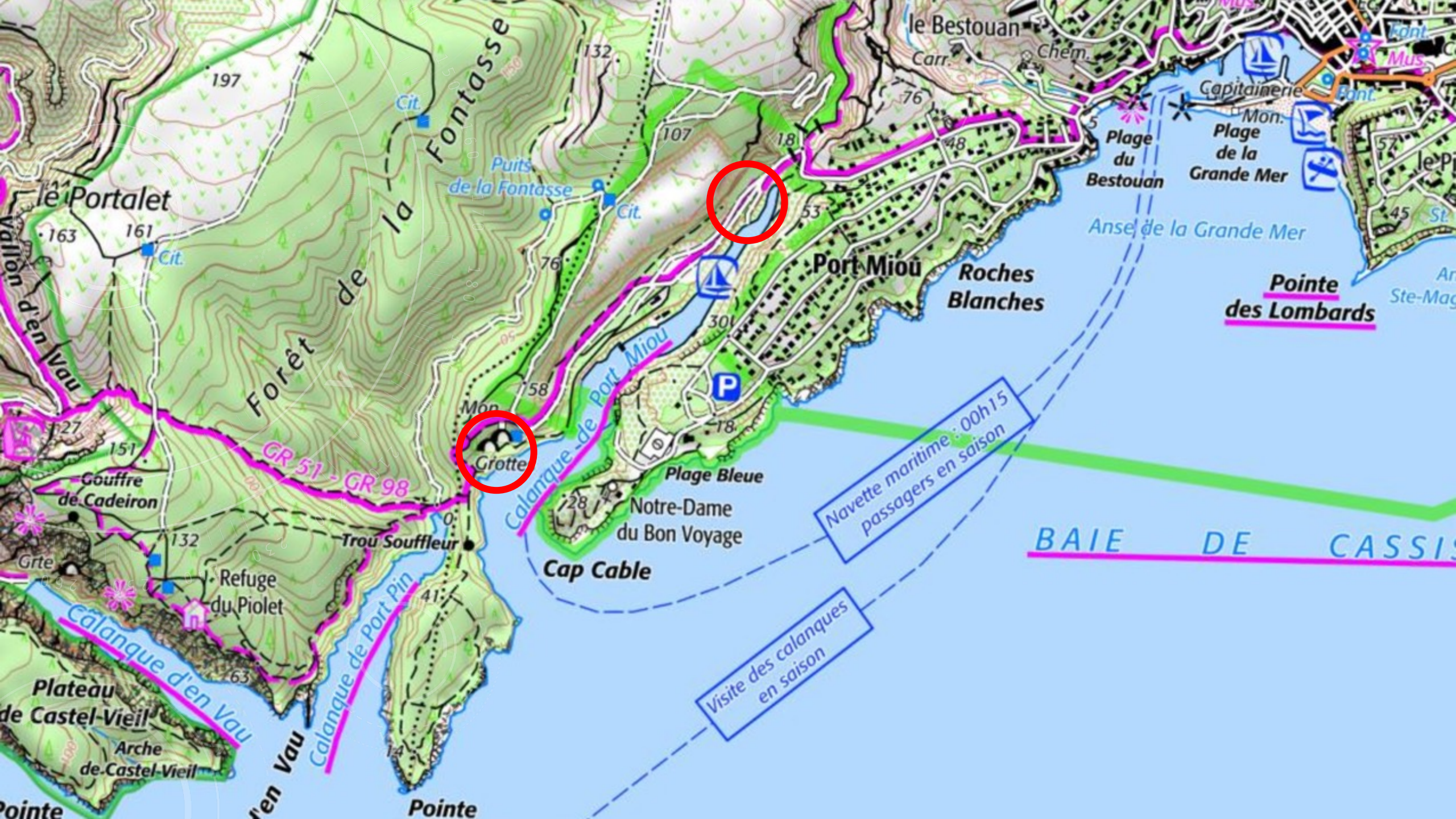


EAUX  
SOUTERRAINES

Students create a low-cost conductivity sensor able to record both :

- Water electrical conductivity
- Water temperature
- Geographical coordinates (GPS)

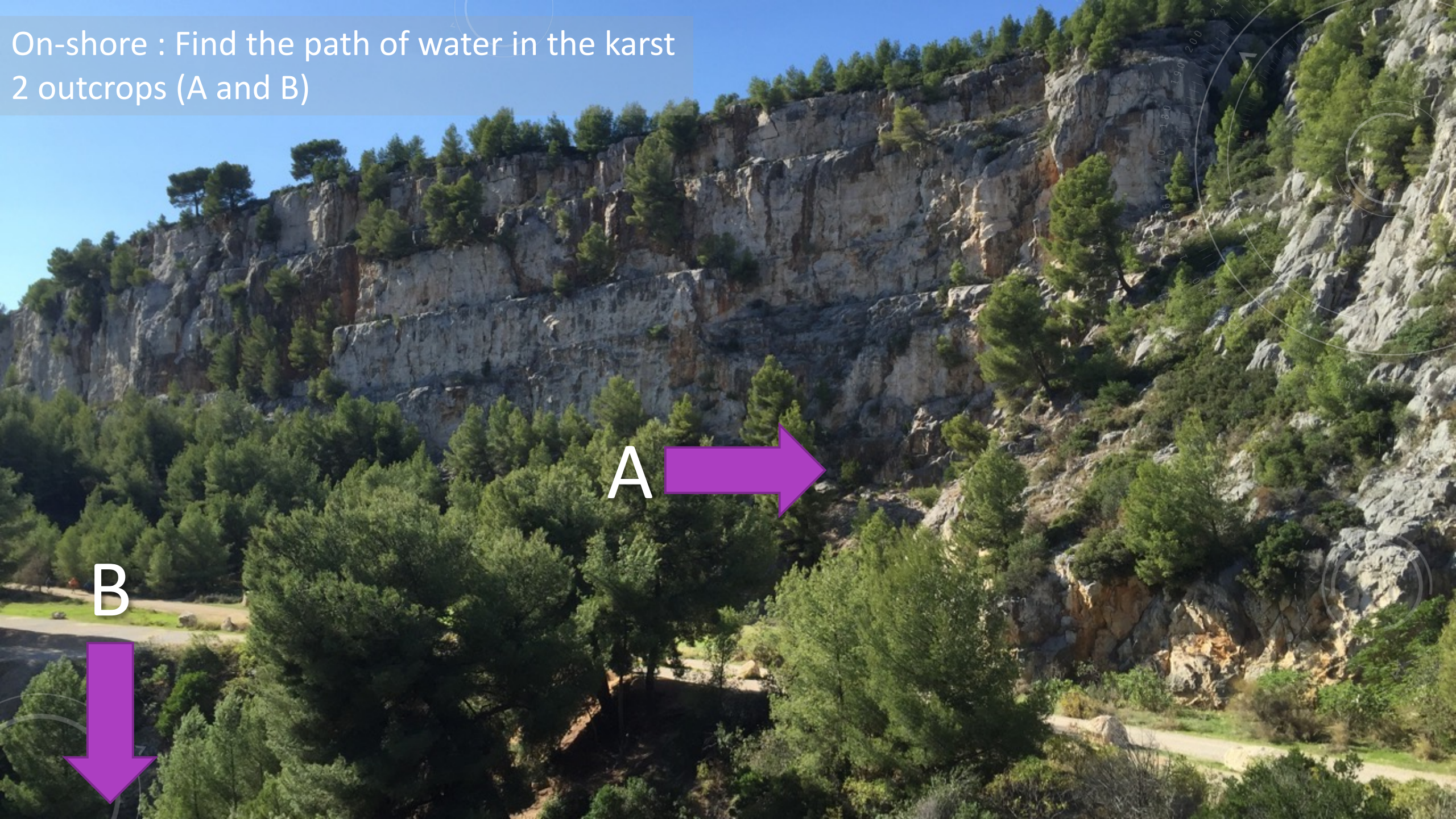




Navette maritime : 00h15 passagers en saison

Visite des calanques en saison

On-shore : Find the path of water in the karst  
2 outcrops (A and B)



A



B



A

Fault,  
fissures  
oriented  
East-West

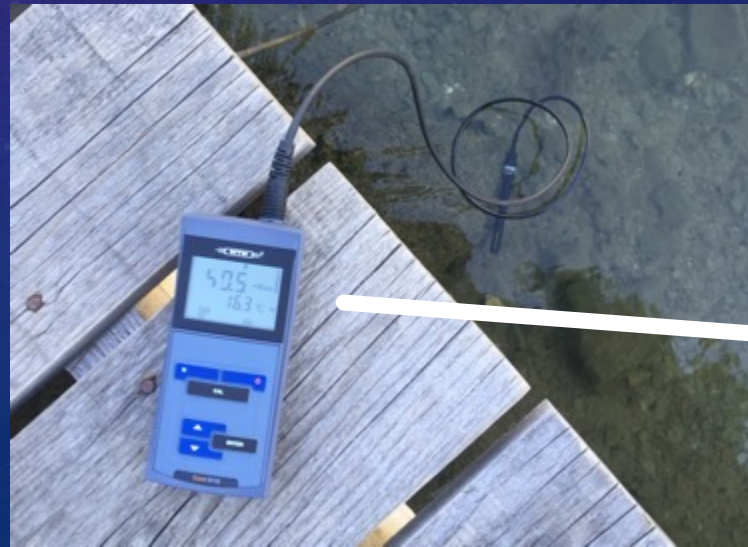


B



Springs  
Sea-water :  
50 mS/cm

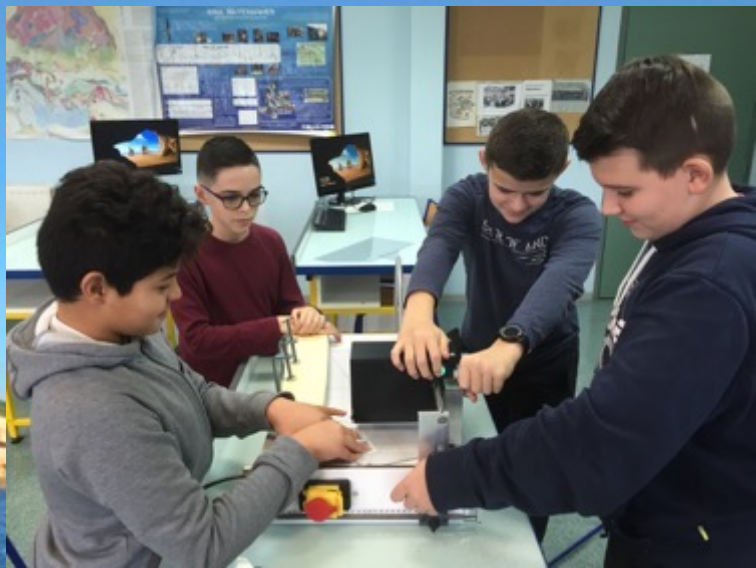
Backish-  
water :  
21.2  
mS/cm



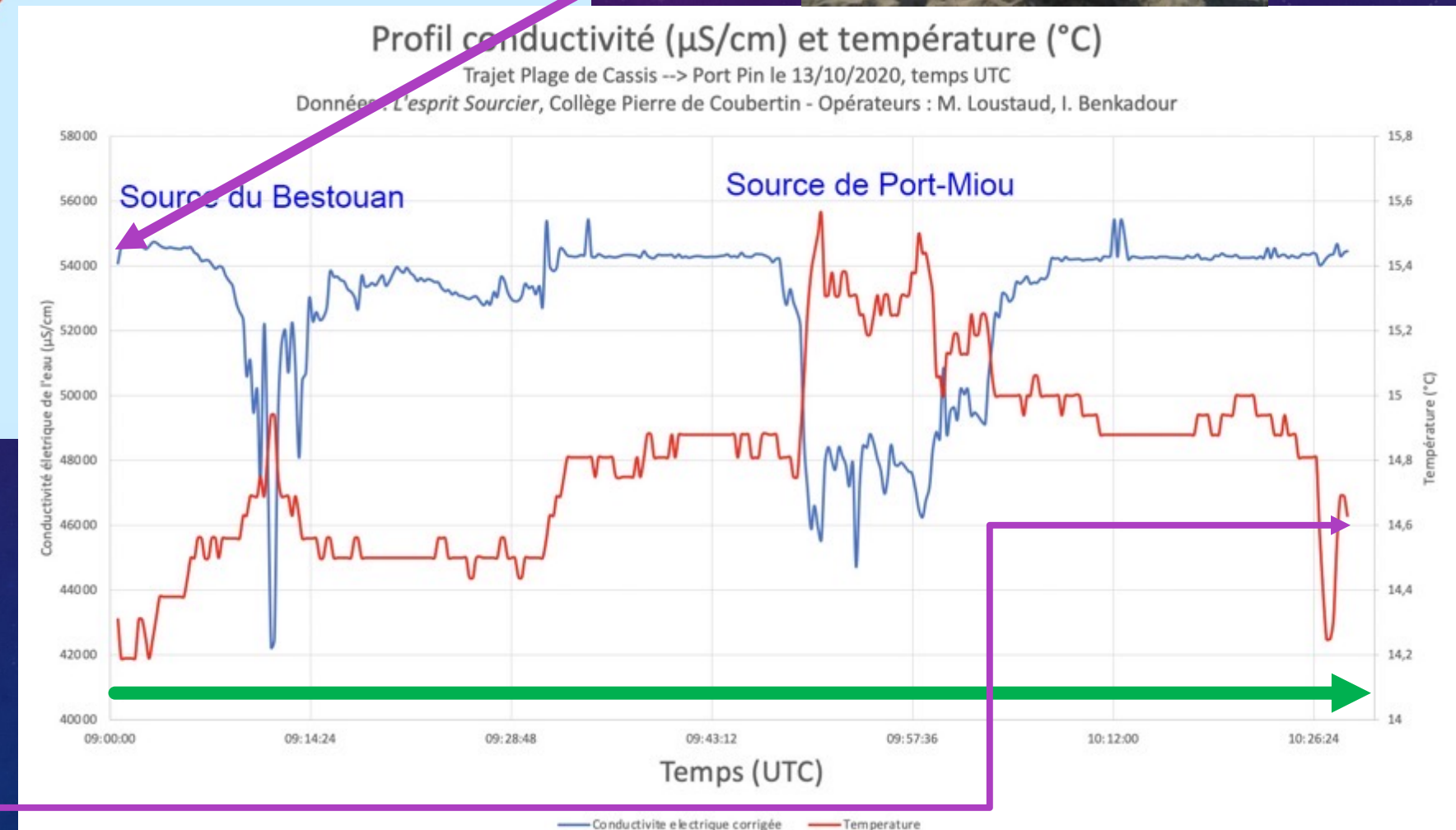
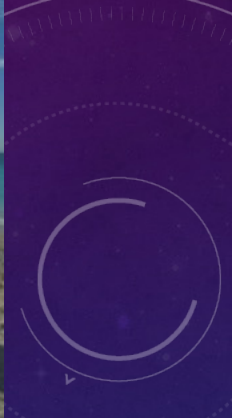
Off-shore : measure of water electrical conductivity and temperature



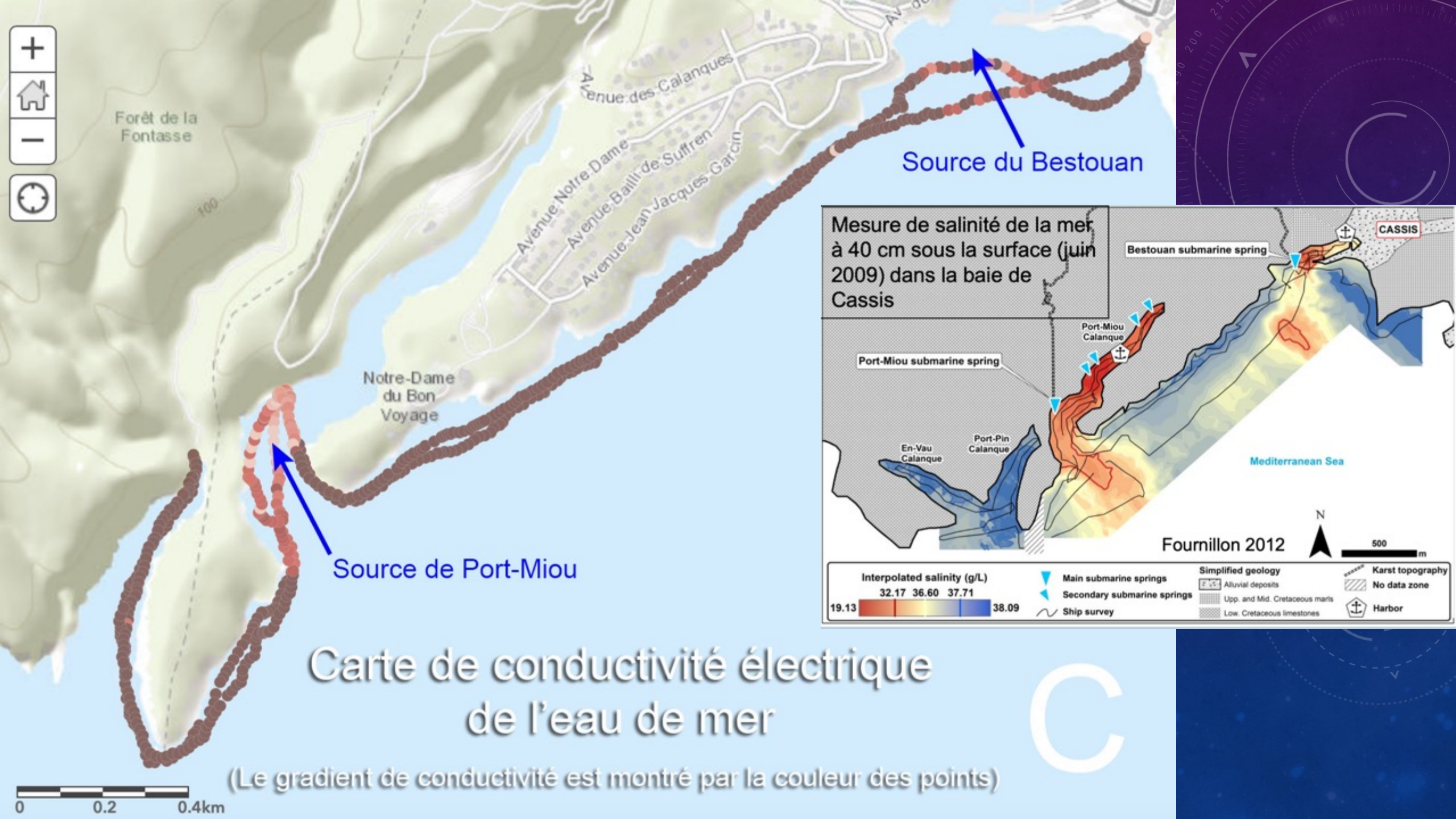
We win the « Genialissime » price at the national Cgenial science contest, we was 1st ranking for middleschool category



And invited in Paris by the Schlumberger enterprise







Forêt de la Fontasse

Avenue des Calanques

Avenue Notre-Dame

Avenue Bailli de Suffren

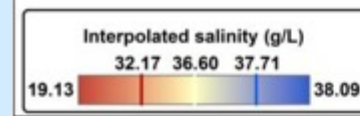
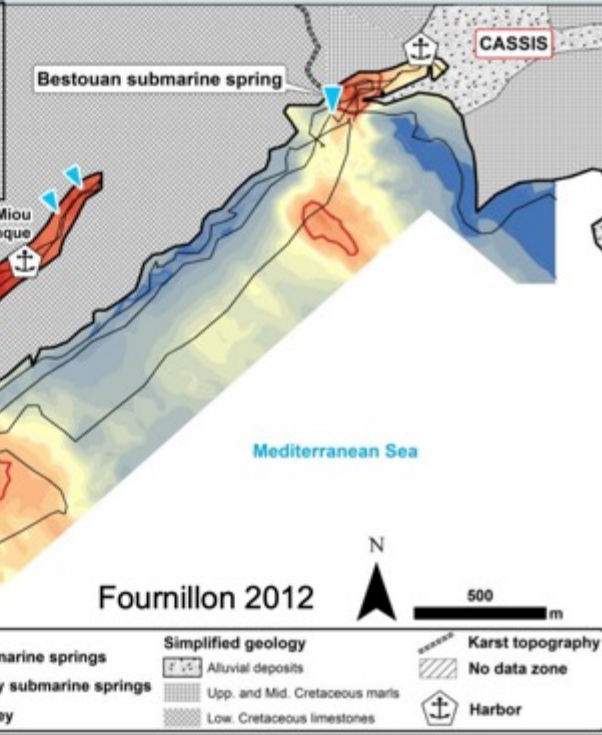
Avenue Jean Jacques Garcin

Notre-Dame du Bon Voyage

Source du Bestouan

Source de Port-Miou

Mesure de salinité de la mer à 40 cm sous la surface (juin 2009) dans la baie de Cassis



# Carte de conductivité électrique de l'eau de mer

(Le gradient de conductivité est montré par la couleur des points)

