

How to create a map with the data?

Using tectoglob3D, a software from Philippe Cosentino

A. First step: create or download the data to your computer. They must be written in csv format and structured in 3 columns: Latitude, Longitude, scalar (figure 1). A scalar is a value associated with each geographic coordinate. In our example, it is the electrical conductivity of the water measured by the students in the field.

```

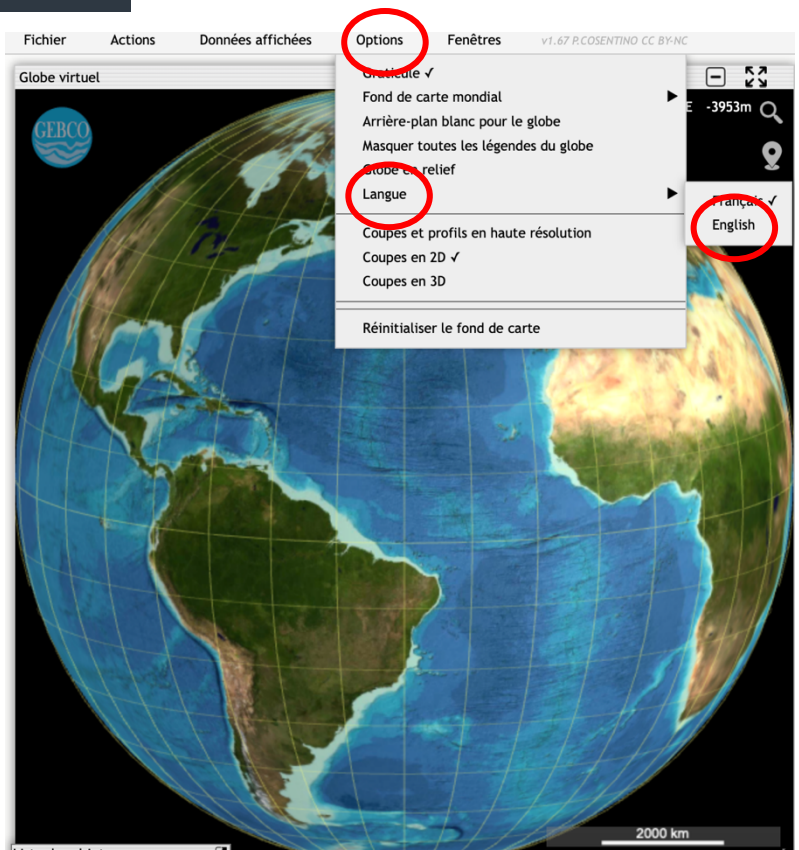
1 Latitude;Longitude;Conductivite electrique corrigée
2 43.212444;5.538097;54081
3 43.212314;5.538037;54581
4 43.212173;5.53794;54731
5 43.2121;5.537947;54735.4752
6 43.212043;5.537972;54711
7 43.21202;5.537954;54711
8 43.211994;5.537957;54811
9 43.211971;5.537975;54621
10 43.211956;5.537986;54521
11 43.211929;5.537996;54601
12 43.211898;5.537988;54731
13 43.211841;5.537973;54721
14 43.211807;5.537931;54631
15 43.211784;5.53792;54571
16 43.211784;5.53792;54545.31
17 43.211757;5.537907;54571
18 43.211742;5.537925;54545.51
19 43.21162;5.537798;54521
20 43.211532;5.537628;54565.4592
21 43.211433;5.537467;54551
22 43.211391;5.537359;54575.456
    
```

Figure 1: The csv file is a text file that contains the data, as in a table where each column is separated by a semicolon.

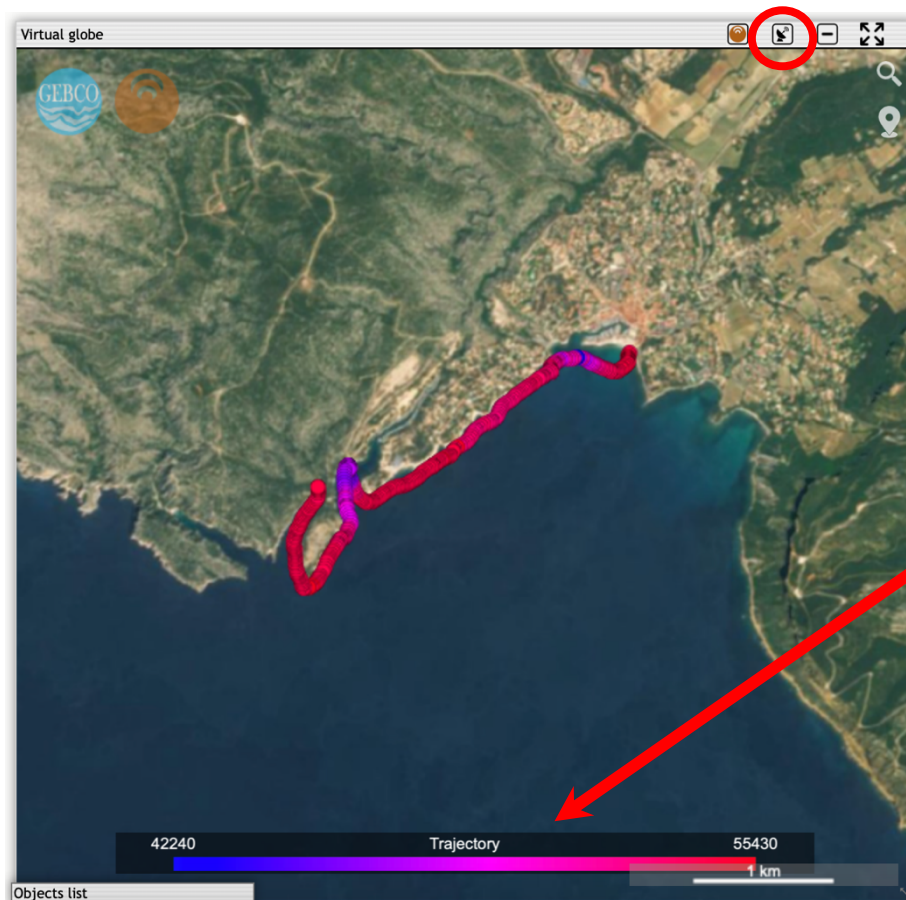
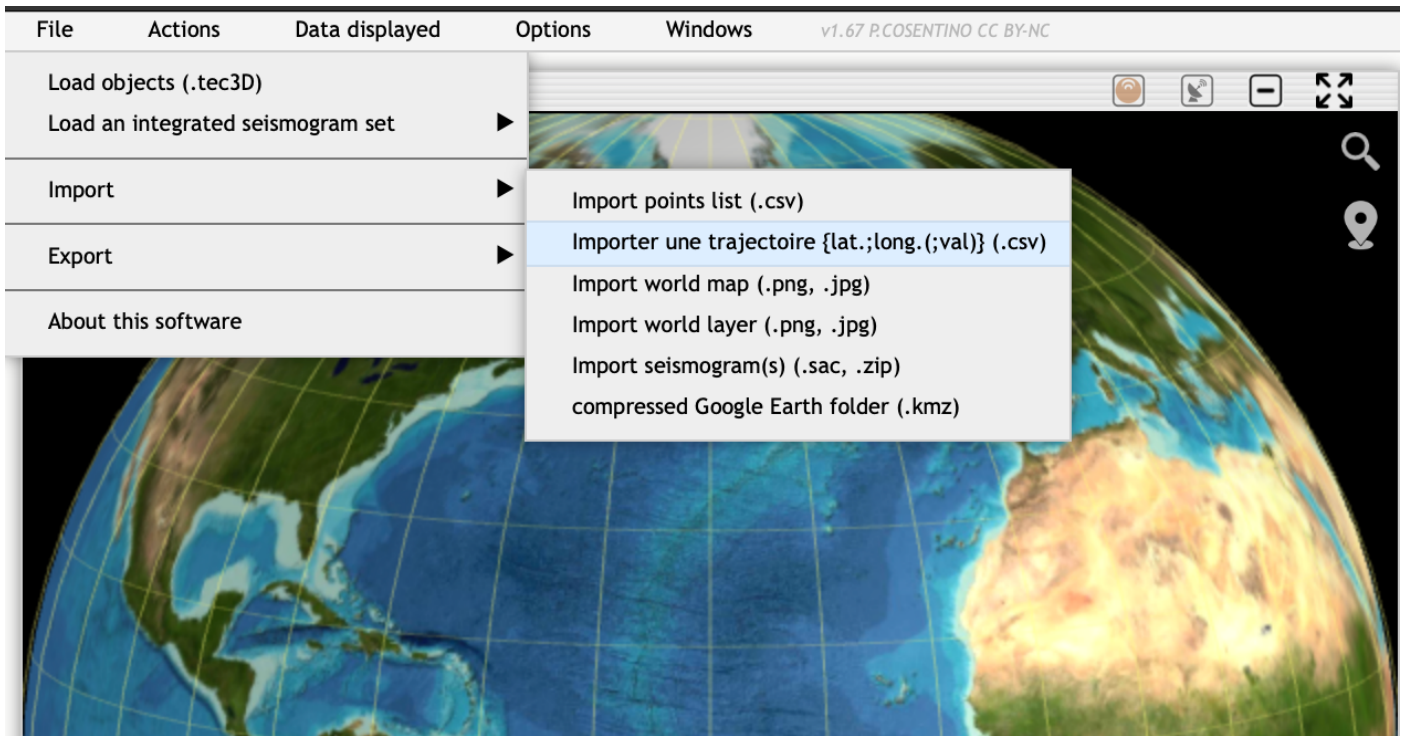
B: Second step :Open the tectoglob3D software on the internet:

<https://www.pedagogie.ac-nice.fr/svt/productions/tectoglob3d/>

If the software appears in French, go to the "option" menu, languages and English.



C: third step : in the “file” menu, choose “import” and “importer une trajectoire”. Choose your CSV file and upload it.



D: last step : enjoy !

Zoom in on the selected area and improve the image quality if necessary by clicking on the dish.

The electrical conductivity values of the water are automatically calibrated on a colour scale, from the smallest in blue to the largest in red