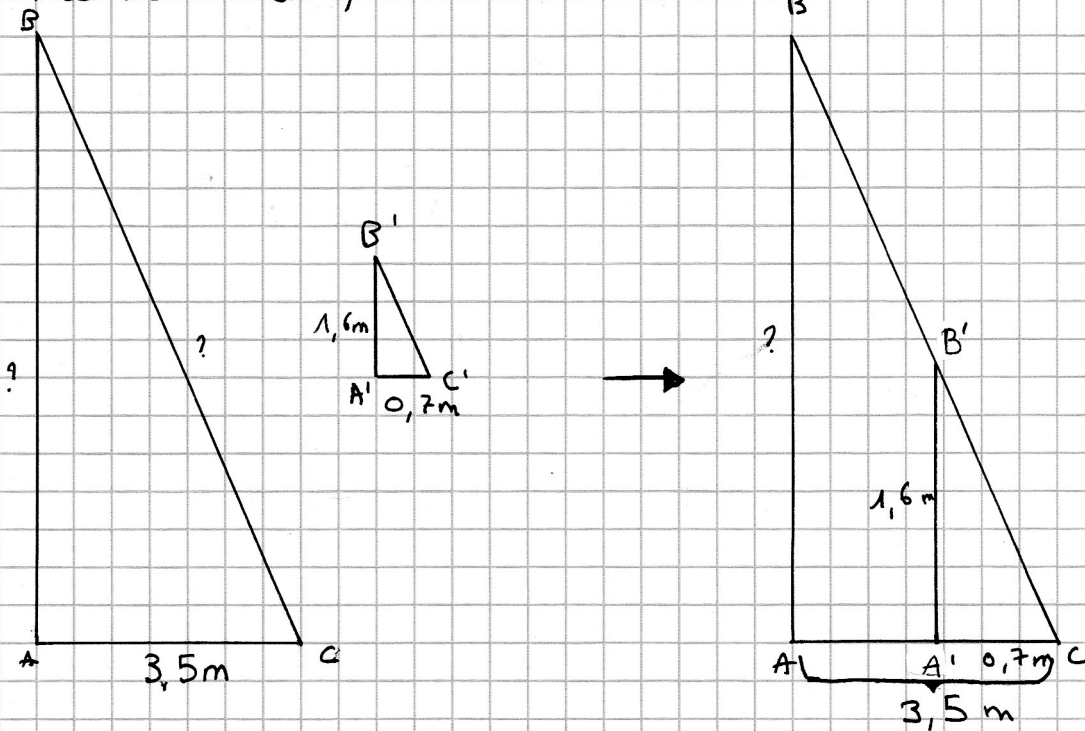


The resolution ;



(We can consider that a tree and a pole are standing perpendicular to the ground.)

If two lines are perpendicular at the same line. Then they are mutually parallel.

So ; $AB \parallel A'B'$
 $B' \in BC$
 $A' \in AC$

According to the theorem of Thalès ;

$$\frac{CA'}{CA} = \frac{CB'}{CB} = \frac{A'B'}{AB}$$

$$\frac{CA'}{CA} = \frac{A'B'}{AB}$$

$$\frac{0,7}{3,5} = \frac{1,6}{AB}$$

Cross product ; $\frac{3,5 \times 1,6}{0,7} = AB$

$$8 = AB$$

The height of the tree is 8 meters.