



THE GREAT BARRIER REEF

Karla Pintarić 6.c

LOCATION

- The reef is located off the coast of Queensland, Australia, in the Coral Sea
- It is around 2,500 km long



UNESCO site - why?

- The great barrier reef is listed as an world heritage by UNESCO 1981. because of natural beauty



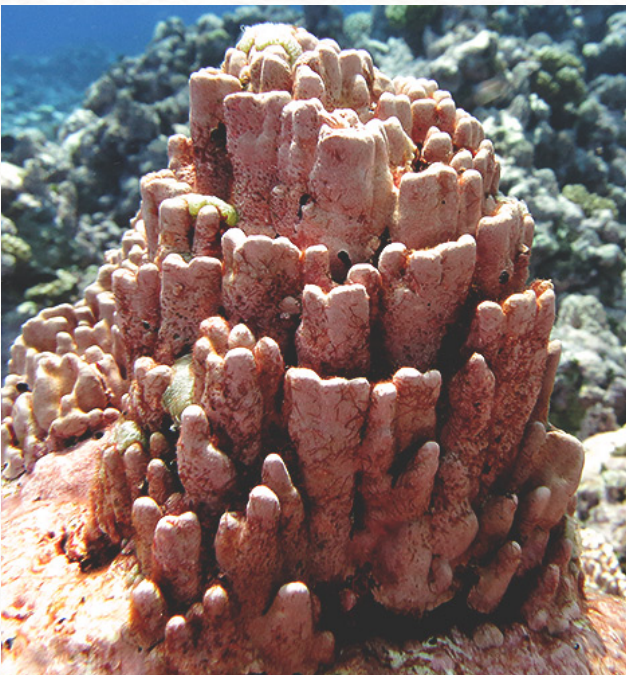
ANIMALS

- There are many different animals like sea snails, sea cucumbers, giant shells, sea snakes, jellyfish and fish of different colors and shades
- The coral islands are home to many seabirds which often fight with each other for food on the reefs
- In summer female turtles lay their eggs in the warm sand. After 8 weeks pass, they are born into little turtles



PLANTS

- There are not many different plants that grow around the Great Barrier Reef because it's hard for them to survive. The plants that grow are different types of algae, sea grass, sea lettuce...
- One of the most important plants in the Great Barrier Reef is a type of algae called coralline algae
- Another very important plant to the Great Barrier Reef are mangrove plants. They don't live underneath the water completely. They grow near the Great Barrier Reef. There are around 80 different species of mangrove around the world.



INTERESTING FACTS

- The coral reef is constantly growing
- In 27 years, between 1985. and 2012. it lost more than half of its corals
- In spring during certain nights a special show happens. Along the coral reef, the entire population starts reacting and it turns orange, red, blue and green

**THANK YOU FOR
LISTENING!**

