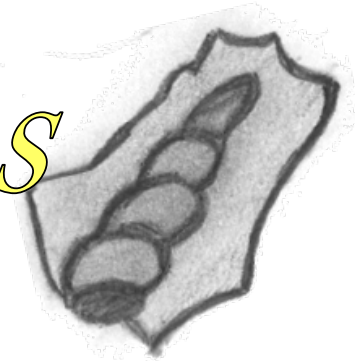


Fossilization simulations



Fossilization simulation's

Activity 1

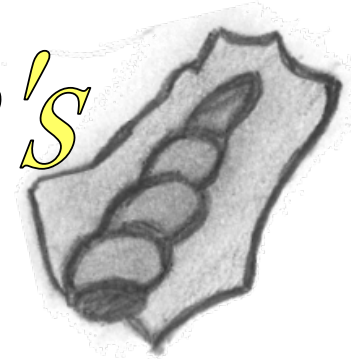
Material: plasticine, oil, shell and brush

Procedure

1. Brush the outer face of the shell with oil.
2. Compress this face against the plasticine block.
3. Then remove the shell and observe what you got.

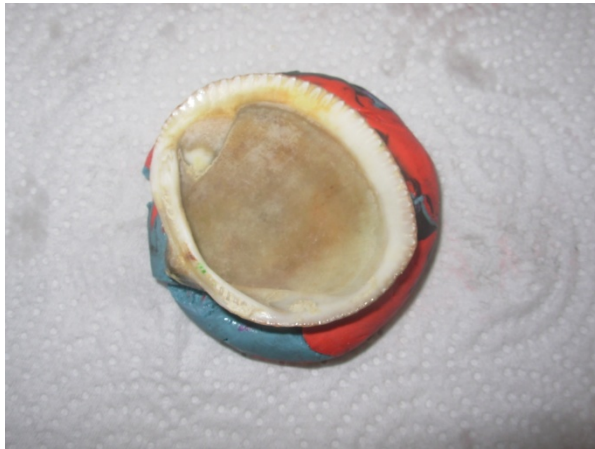


Fossilization simulation's



Activity 1

Result:



Fossilization simulation's

Activity 2

Material: plasticine, oil, plaster, plastic cup, shell and brush.

Procedure

1. Prepare the paste by adding water (2 tablespoons) to the powder (1 tablespoons) and stirring until the consistency is similar to that of honey.
2. Fill the plaster with the concavity by smoothing the surface.
3. Allow to dry 10 min.
4. When the plaster is dry, remove it. Notice what you got.



Fossilization simulation's

Activity 2

Result:



Fossilization simulation's

Activity 3

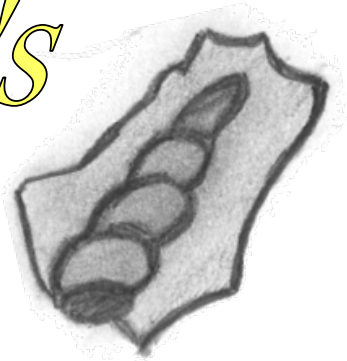
Material: oil, plaster, shell, plastic cup, and brush.

Procedure

1. Prepare the paste by adding water (2 tablespoons) to the powder (1 tablespoons) and stirring until the consistency is similar to that of honey.
2. Fill the shell with the paste of plaster.
3. Allow to dry 5 to 10 min.
4. When the plaster is dry, remove it. Notice what you got.



Fossilization simulation's



Activity 4

Material: glycerin soap, gobelé, plastic cup, clock glass, tree leaf, heating plate, glass tub, tenacious.

Procedure

1. Place the sheets on the bottom of the plastic cup.
2. Cut the glycerin soap into small pieces.
3. Heat the gobelé in a water bath until the glycerin is melted.
4. Pour the molten glycerin into the plastic cup.
5. Wait a week.

Fossilization simulation's

Activity 4

Result:

