



## Selfie Treasure Hunt

This guide belongs to:

Name	Country
1	
2	
3	
4	
5	
6	

In this guide you will find some tasks concerning 9 places we are inviting you to look for.

Write the answers in this booklet. Before starting the hunt, choose a student who will take selfies when it's asked. Remember, every group member has to be in the selfie for it to be valid.

Besides this guide you will get: - one map of the route you will take

Be sure that every task is done to have the highest score possible.

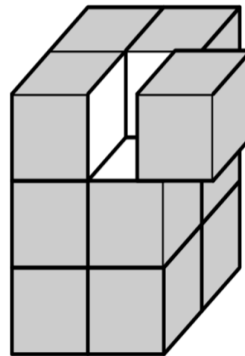
**Good hunt!**



A



Picture 1



Picture 2

1. Mark it on the Map.

2. Take a selfie with a tile panel at your back.

In Picture 2, you can see a three-dimensional view of the tile panel represented on Picture 1.

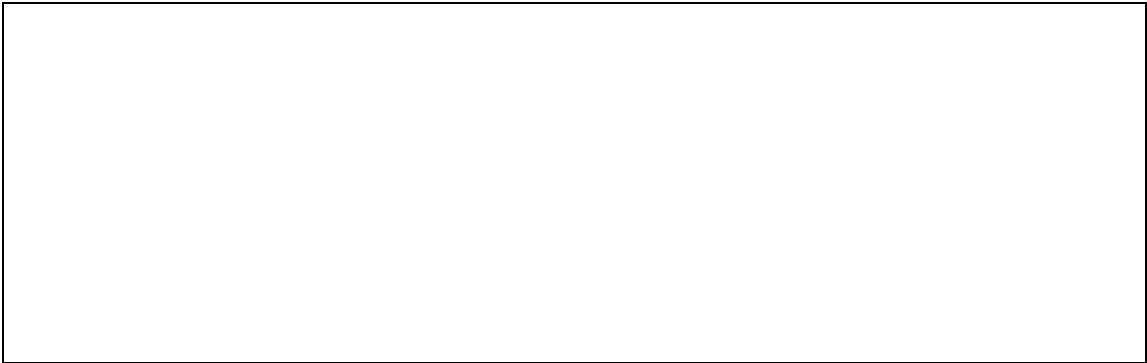
This panel is made of 60 tiles, each one of them built in a cubic shape with 15,5cm of edge.

These tiles need to be restored. To do that, we need to transport them in boxes with the required precautions.

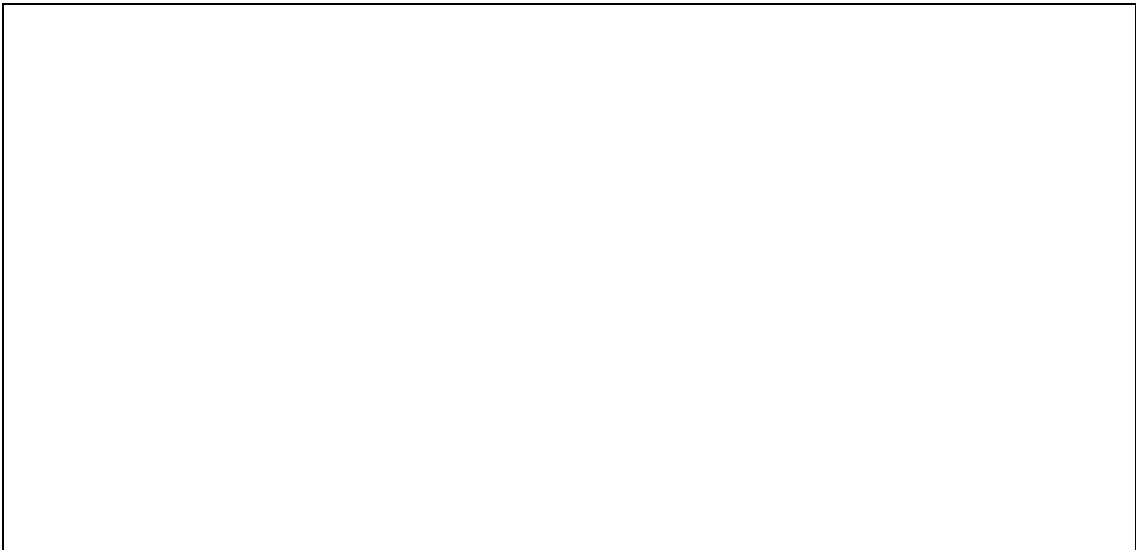
There is only one box. This box has a parallelepiped shape, with the following size:

Length: 77,5 cm    Width: 31 cm    Height: 77,5 cm

**3.** Is it possible to transport all the tiles in this box? Present calculations to prove your answer.

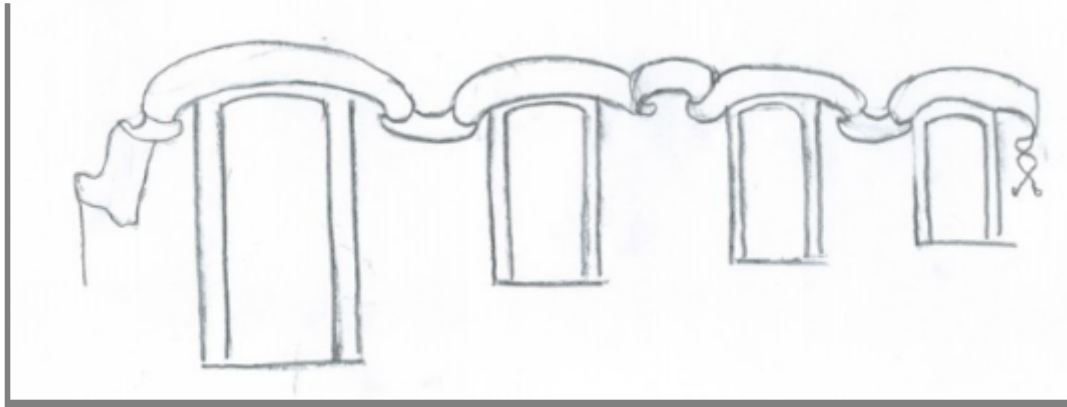


**4.** In the event of remaining tiles that don't fit the box, what is the size that the second box needs to have to accommodate them? Present calculations to prove your answer.



4 / \_\_\_\_

**B**



1. Mark it on the Map.

2. What can you do here?

3. Write down the 4 words located above the windows.

4. Copy them into this chart and translate them into your own language.

Portuguese	Estonian	Polish	French

15 / \_\_\_\_

C



1. Mark it on the Map.
2. Take a Selfie.
3. What is the purpose of this building? \_\_\_\_\_
4. How many circles are in this building's front wall? \_\_\_\_\_

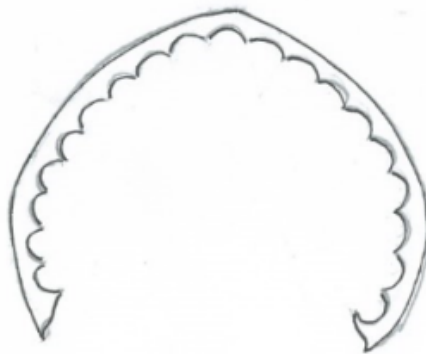
4 / \_\_\_\_

**D**



1. Mark it on the Map.
2. Take a Selfie.
3. Take a look at "Palácio da Vila". How many windows do you see on the side wall? \_\_\_\_  
3 / \_\_\_\_

**E**



1. Mark it on the Map.
2. Take a Selfie on the other side of the road.
3. How many horseshoe arches do you see? **A) 3** **B) 4** **C) 1**

3 / \_\_\_\_

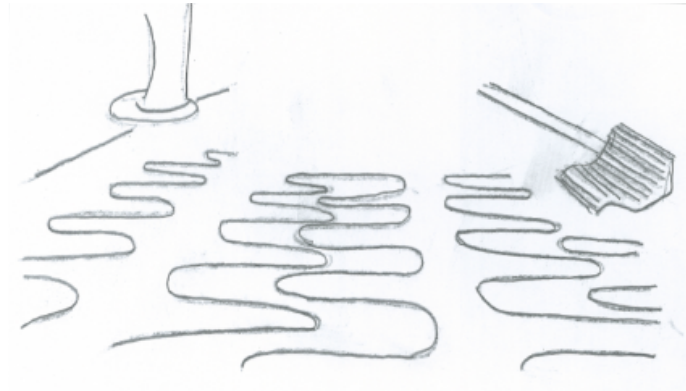
F



1. Mark it on the Map.
2. Take a Selfie.
3. What is this building about? \_\_\_\_\_
4. For how long has it been running? \_\_\_\_\_

4 / \_\_\_\_

# G

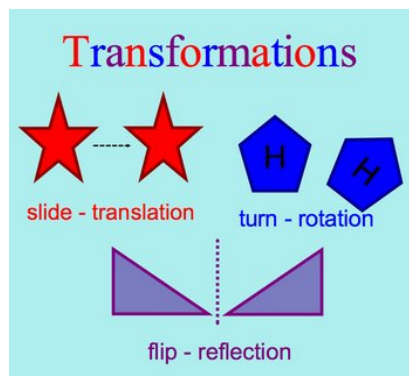


1. Mark it on the Map.

2. Take a Selfie.

3. Look at the ground. What can you see here?

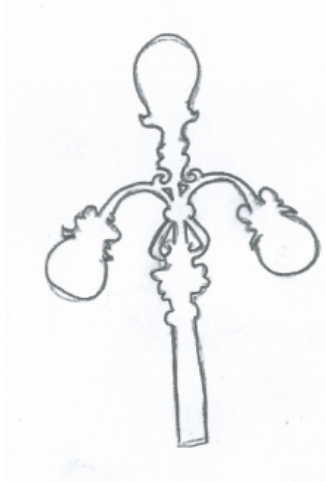
A) Slide-Translation B) Turn-Rotation C) Flip-Reflection



3 / \_\_\_\_



H



1. Mark it on the Map.

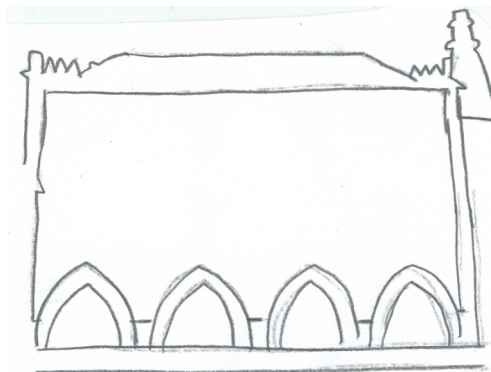
2. Take a Selfie.

3. How many geometric shapes do you see here? \_\_\_\_

4. Name them: \_\_\_\_\_

6 / \_\_\_\_

I



1. Mark it on the Map.

2. Take a Selfie.

3. Turn around. Take another selfie.

4. Have a seat. Each member of the group should observe the view and draw a draft of the landscape.

4 / \_\_\_\_

46 / \_\_\_\_