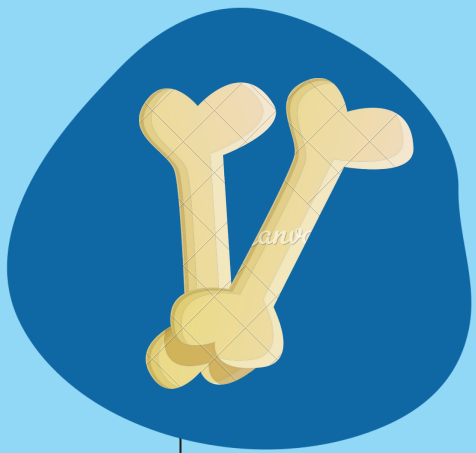


Prehistory



Lower Paleolithic



Spain has relevant historical resources from this period such as "Atapuerca", a World Heritage Site located in Burgos. It is a deposit where the remains of the oldest human beings of the peninsula are found.

Upper Paleolithic



The "Altamira Caves" are one of the greatest Prehistorical relics that Spain has. These caverns are painted with different cave drawings that show how the society was at that time.

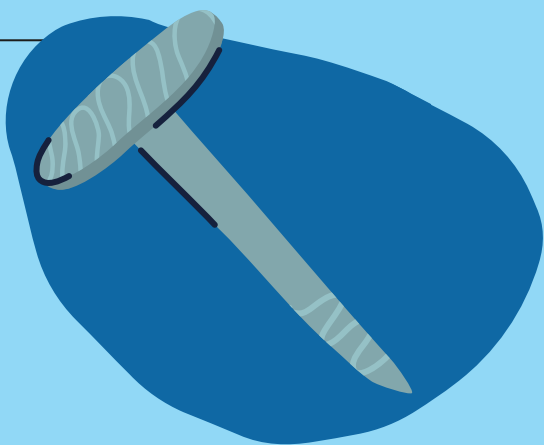
Neolithic

During this period, different permanent settlements are established and agriculture and livestock developed at large scale.



Age of Metals

In these Prehistoric phase, individuals started to experiment with different metals that, later on, allowed them to produce several tools that will make their lifes easier.



Megalitism

During this period, they began to develop architecture and that is why we found this phenomenon called megalithism with funerary function. They were mostly found in Western Mediterranean and Atlantic Europe

