



SPECIAL OCCASION FACE MASK-
INSPIRED BY TRADITIONAL MOTIFS
OF THE CROATIAN CULTURAL
HERITAGE

PROJECT: FASHION FACE
MASK

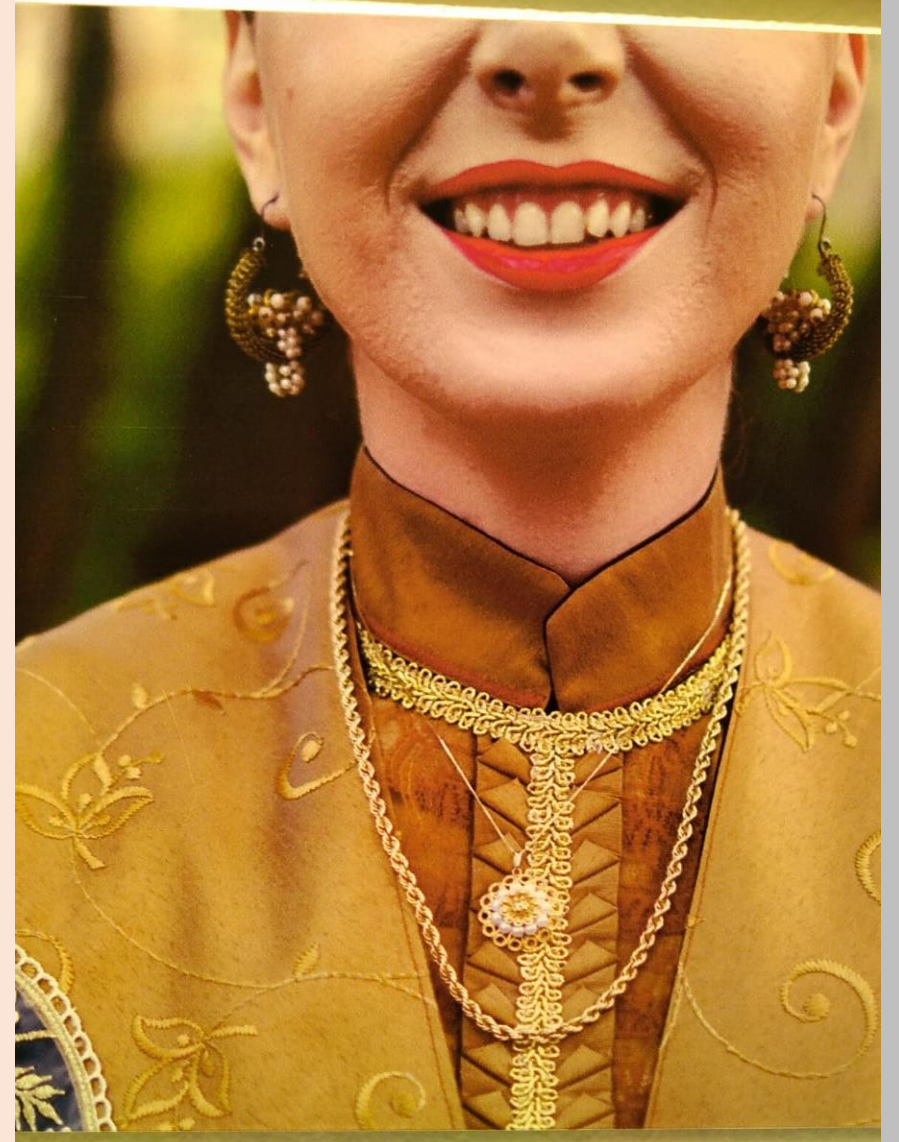
- **Embroidery**- is a traditional craft. It is the art of decorating a piece of cloth with stitches sewn directly onto it. Cloth or clothing can be decorated with patterns or pictures sewn directly onto the material, or a pattern or picture can be created in this way. The embroidery technique is considered to be a "high school of handicrafts", and in the Middle Ages embroidery was given the title of "the queen of handicrafts".
- There are several types of embroidery: whitework embroidery, goldwork, richelieu (cutwork), tapestry, cross stitch, chain stitch. It can be embroidered on various materials from leather to gauze, with thick threads of wool as well as the thinnest threads of gold and decorated with precious stones and pearls or beads.

THE CENTRAL DALMATIA
REGION -Split and the
surrounding area



INSPIRATION -A SCARF

- A scarf is the most luxurious part of the women's traditional costume of Split. It is made of the finest industrial fabrics (silk damask, satin, white satin, decorated with embroidery of gold silk and sequins. Especially luxurious were those on which the metallic thread was complemented by small pearls. On such embroidered fabrics ready-made trimmings are added such as lace, silk ribbons, glass beads. All the details on the scarf are very carefully chosen to avoid being excessively decorated.



To make a special occasion face mask, we need:

FABRIC:

-outer fabric- satin approx. 20 cm

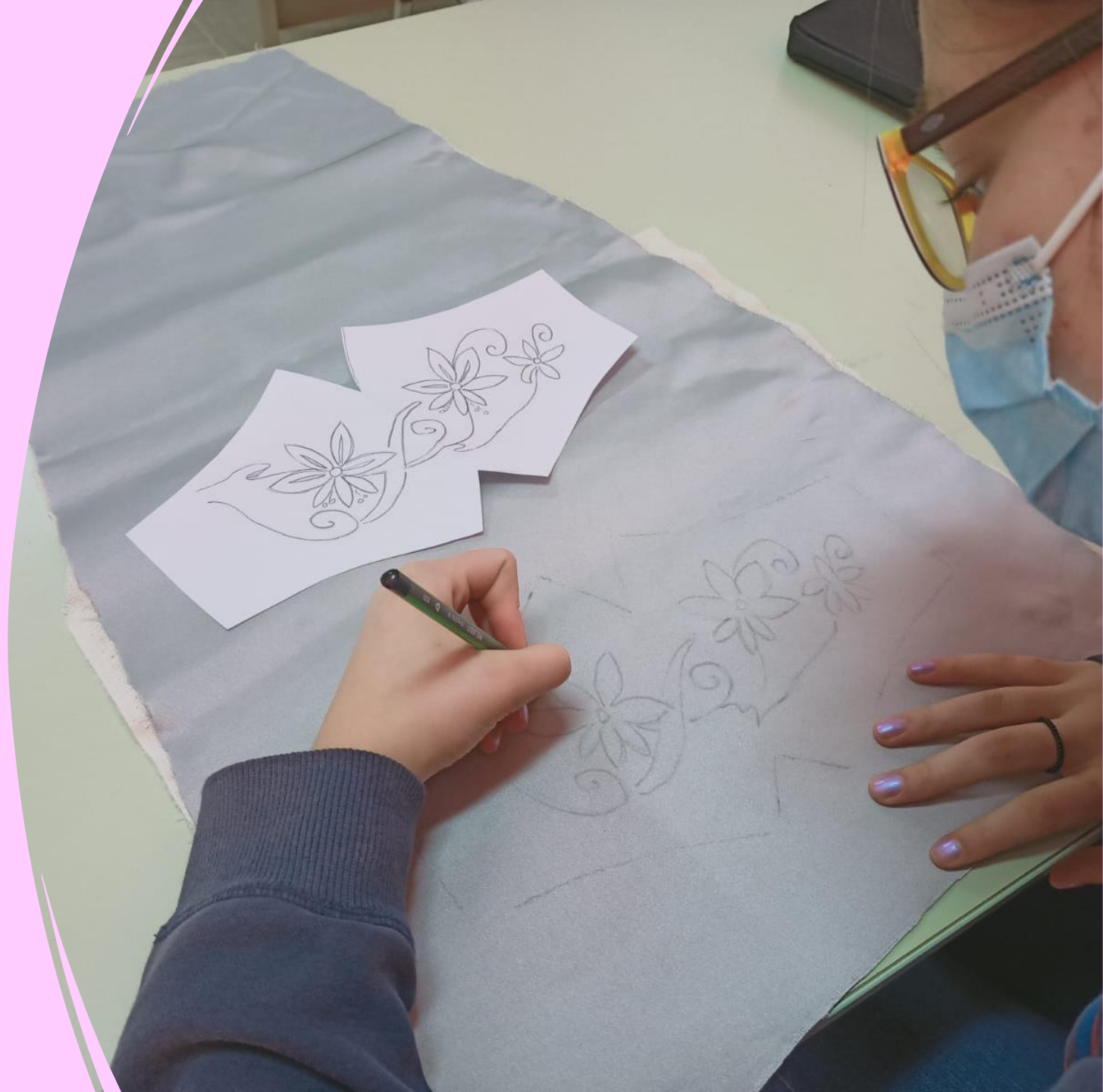
- lining - approx. 20 cm

HABERDASHERY AND TRIMMINGS: silver silk (thread), beads, lace and decorative ribbons

SEWING TOOLS: hand needle, wooden embroidery hoop, tailor's scissors, pins

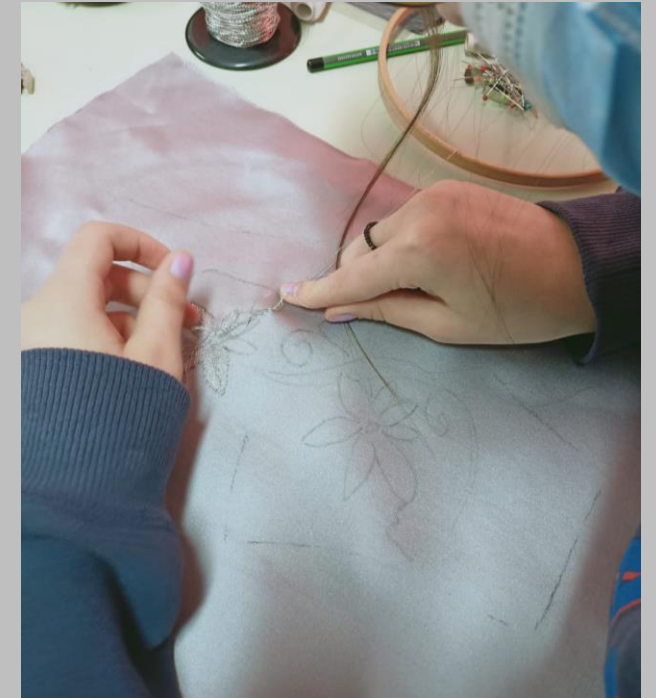
SEWING EQUIPMENT: universal sewing machine, electric steam iron

-
- Designing and making a selected motif on a paper pattern, and transferring the motif onto the satin fabric



Handicraft

- embroider with a stitch filling the design outlines and with a chain-stitch using a hand needle and silver metallic thread



CUTTING OUT THE OUTER EMBROIDERED FABRIC

- Using a pencil and a paper pattern, trace the shape of the mask onto the face of the fabric.
- - Using the tailor's scissors, cut out the outer fabric, that we previously embroidered, following the trace line.



Cutting out the fabric



- Sew the nose and chin darts (notches) with a 1cm seam allowance.



Decorative lace positioning

- - In order to give the face mask an even more glamorous look, position the decorative lace along the upper and lower edge of the front side.



Sewing decorative lace on the mask

Using a sewing machine, sew decorative lace on the embroidered fabric with a 8mm seam allowance.



SEWING AN ELASTIC BAND

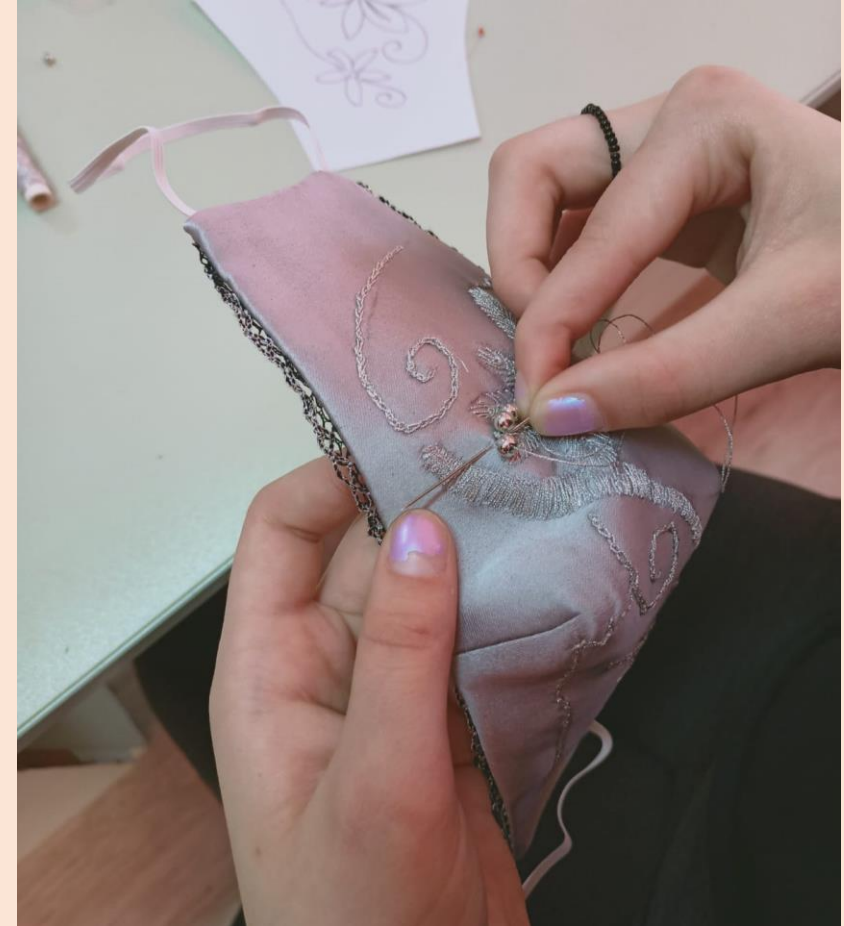


- Join the outer fabric and the lining together stitching all the way around with a 1 cm seam allowance using the sewing machine.



SEWING BEADS

- Sew beads onto the fabric using a hand needle and thread in order to give the face mask another touch of glamour.





THE FINAL LOOK



- AUTHOR: Dora Miljak
- PROFESSION: Tailor
- CLASS: 1 G
- FASHION TEACHER: Tanja Jovanović

- ENGLISH TEACHER: Miranda Barac