




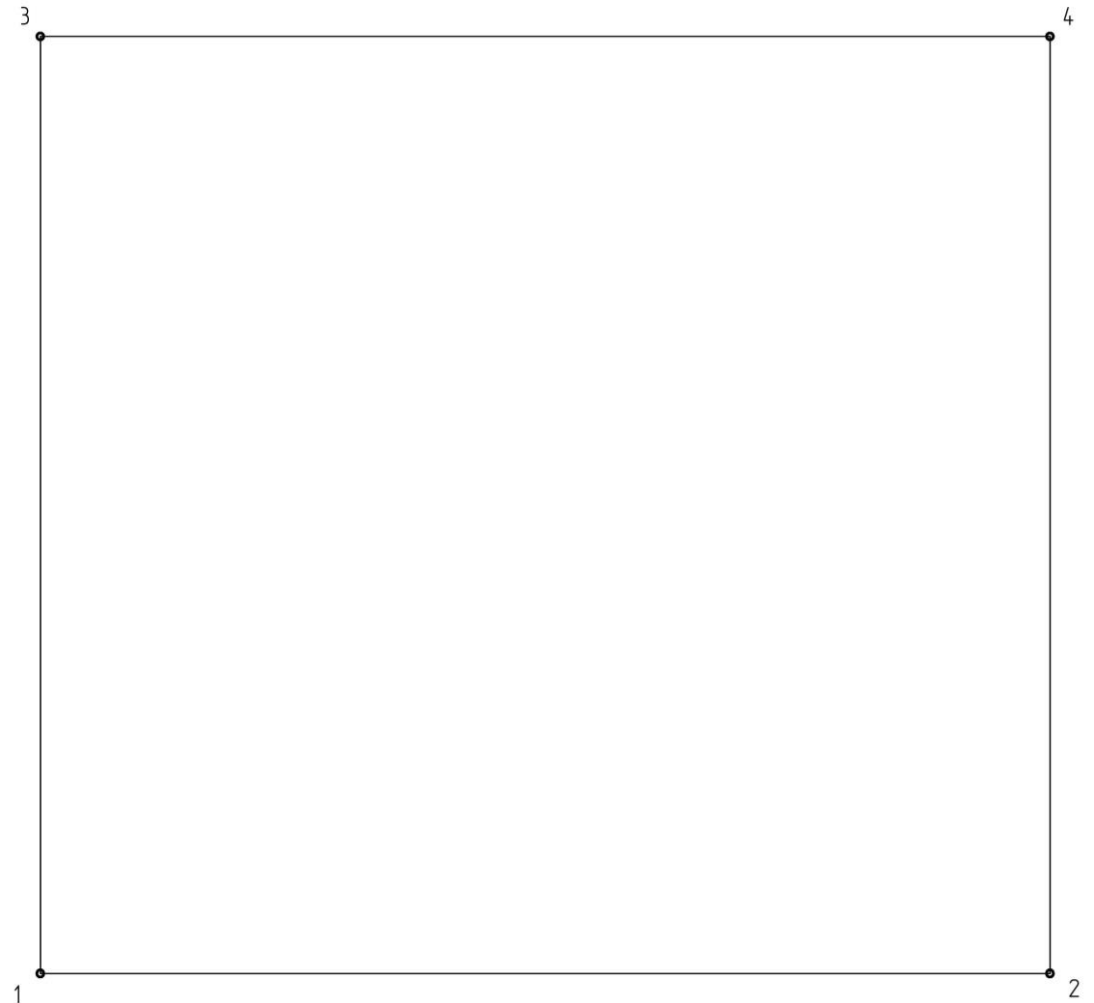
FACE MASK PATTERN

(HOW TO MAKE ONE)

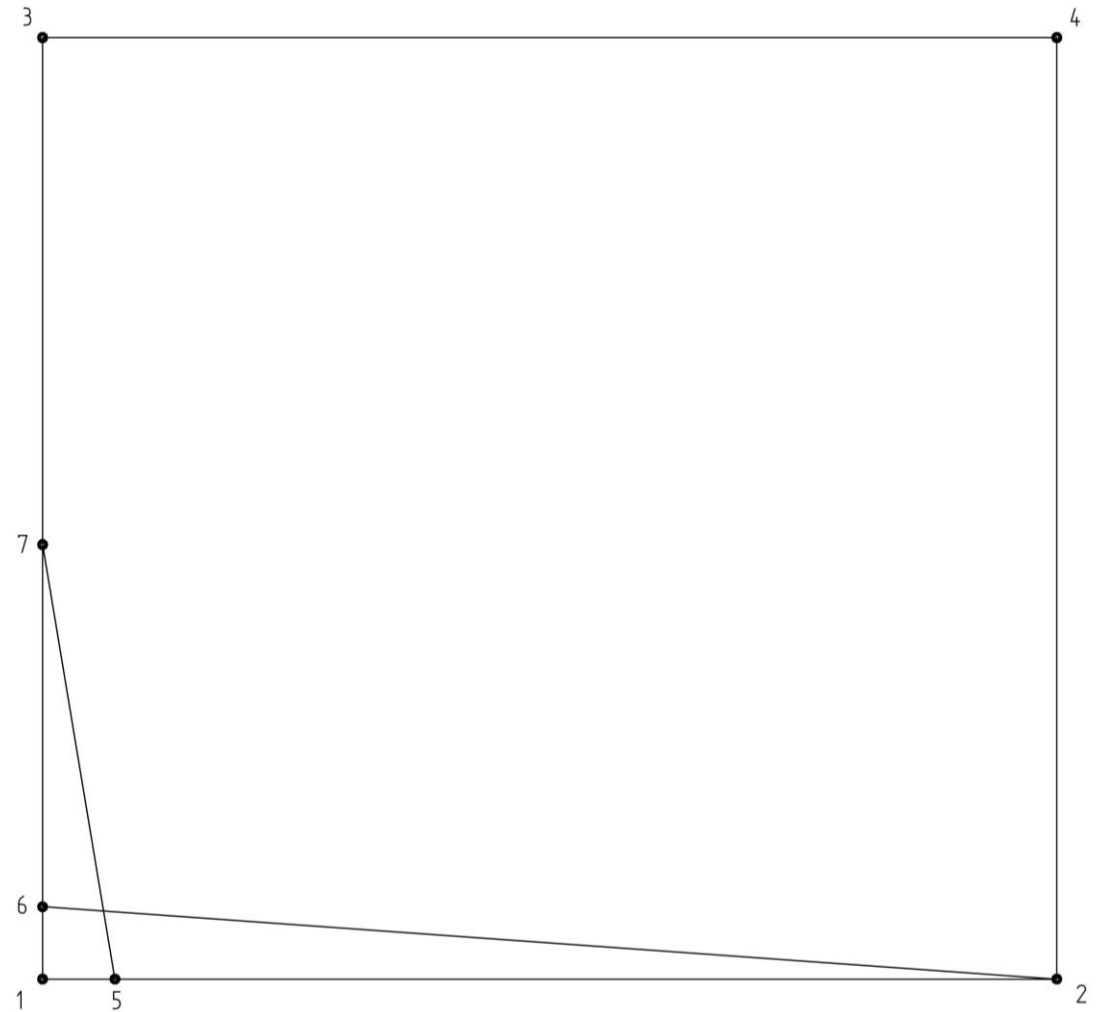


Fashion Face Mask
eTwinning project

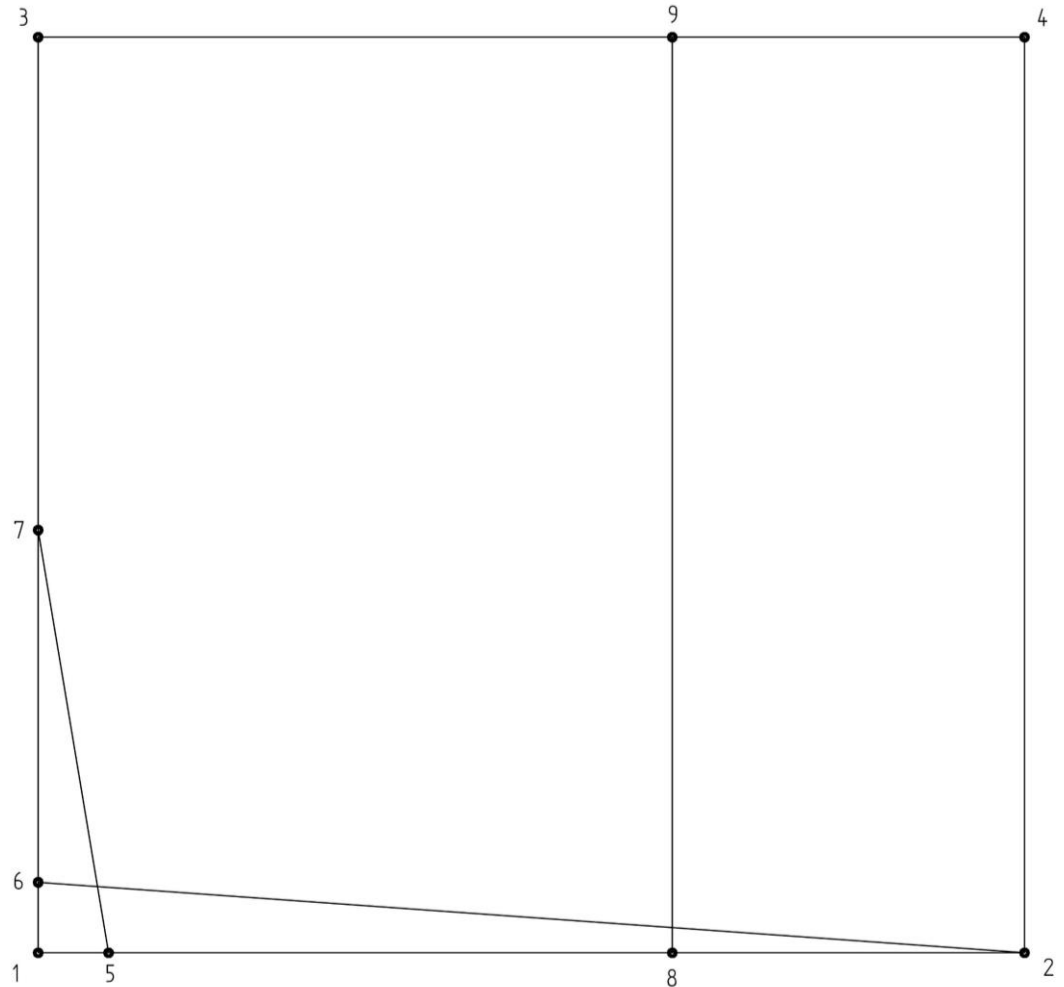
- The pattern of the face mask is done in real (life) size
- We start making pattern in the lower left corner – our starting point is point 1
- From point 1 to the right, we measure 13 cm
- From point 1 upwards we measure 14 cm
- Draw a rectangle (mark the vertices as points 2,3, and 4)



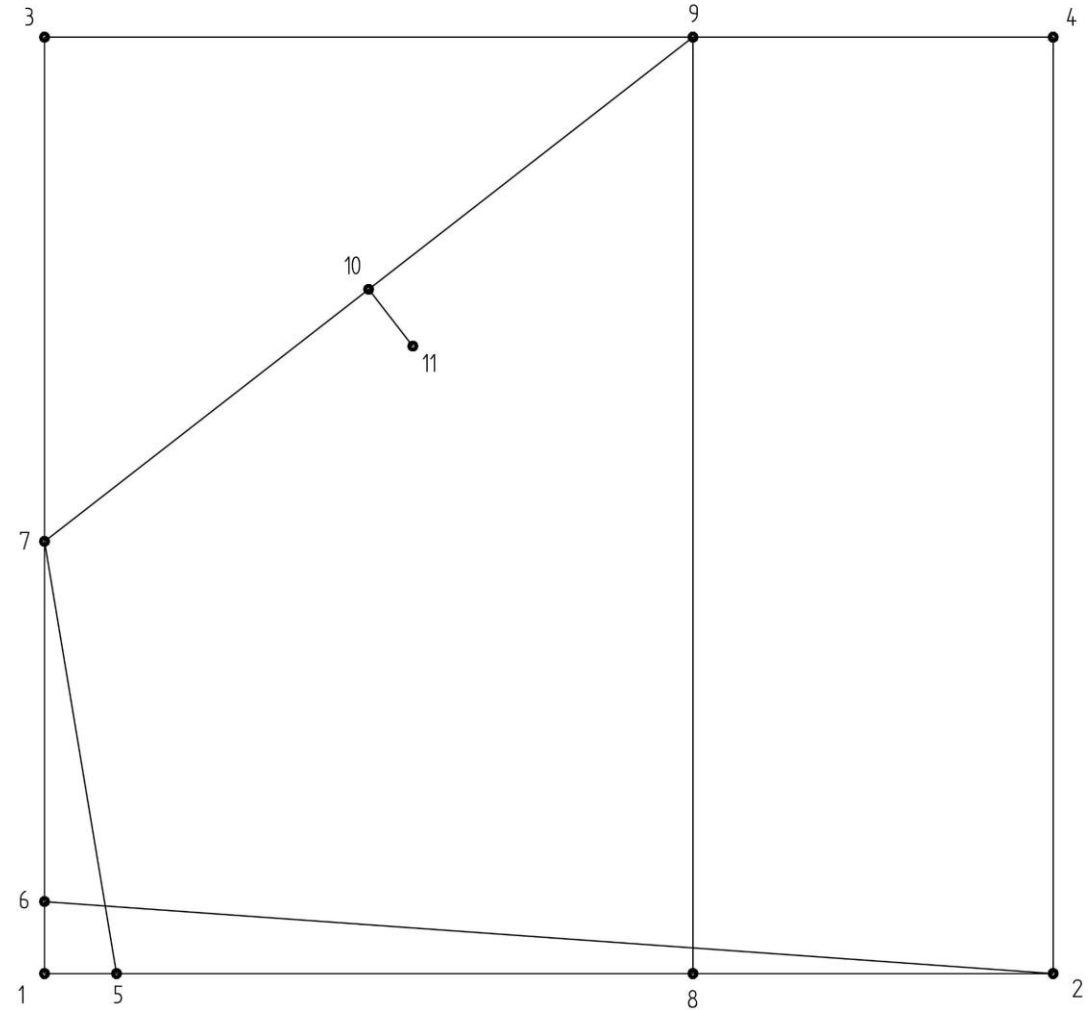
- Again, from point 1 to the right measure 1 cm and mark this spot as point 5
-
- Find the midpoint of line 1-3 and mark it as point 7
 - Connect points 5 and 7
 - From point 1 upwards measure 1 cm (point 6 arises)
 - Connect points 6 and 2 točka 6 i 2



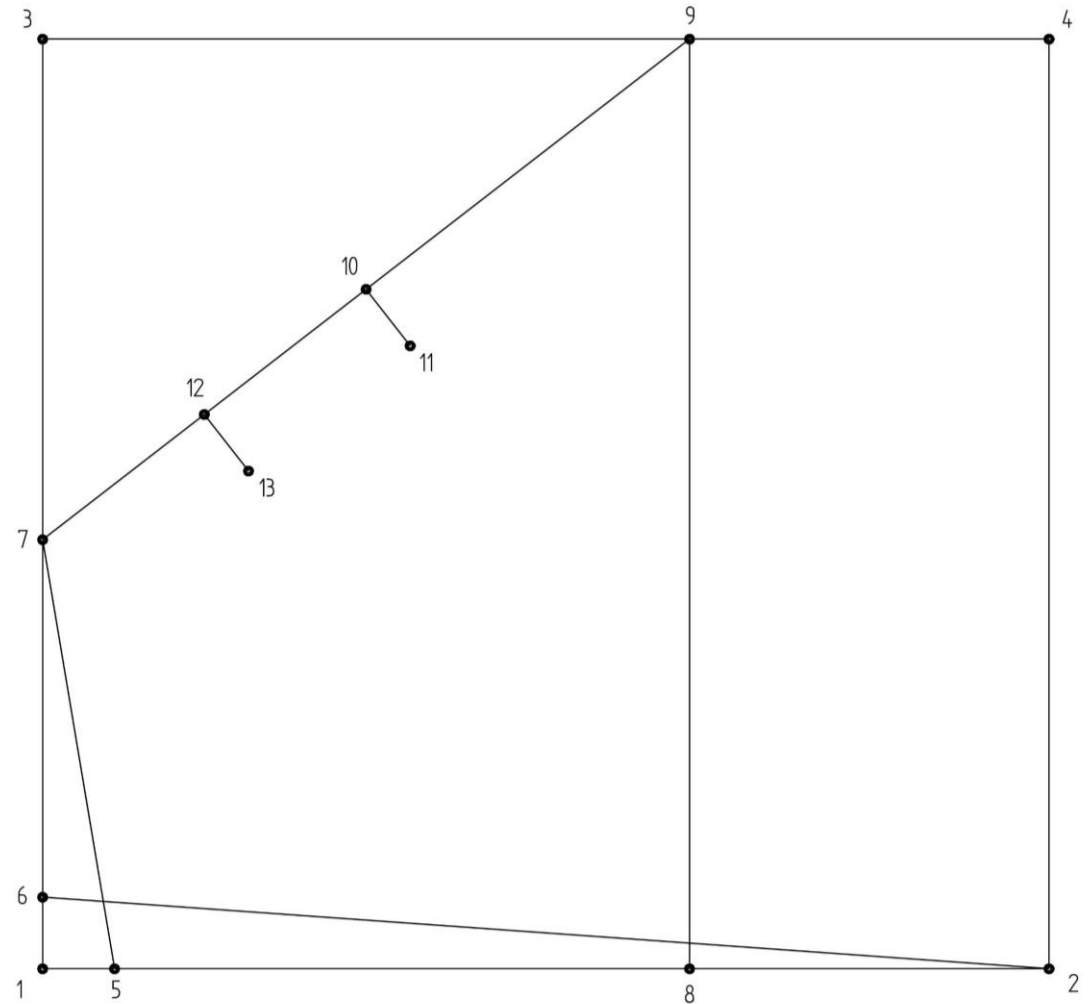
-
- From point 5 to the right measure 8 cm (point 8 is created)
 - Draw the vertical upwards and mark point 9



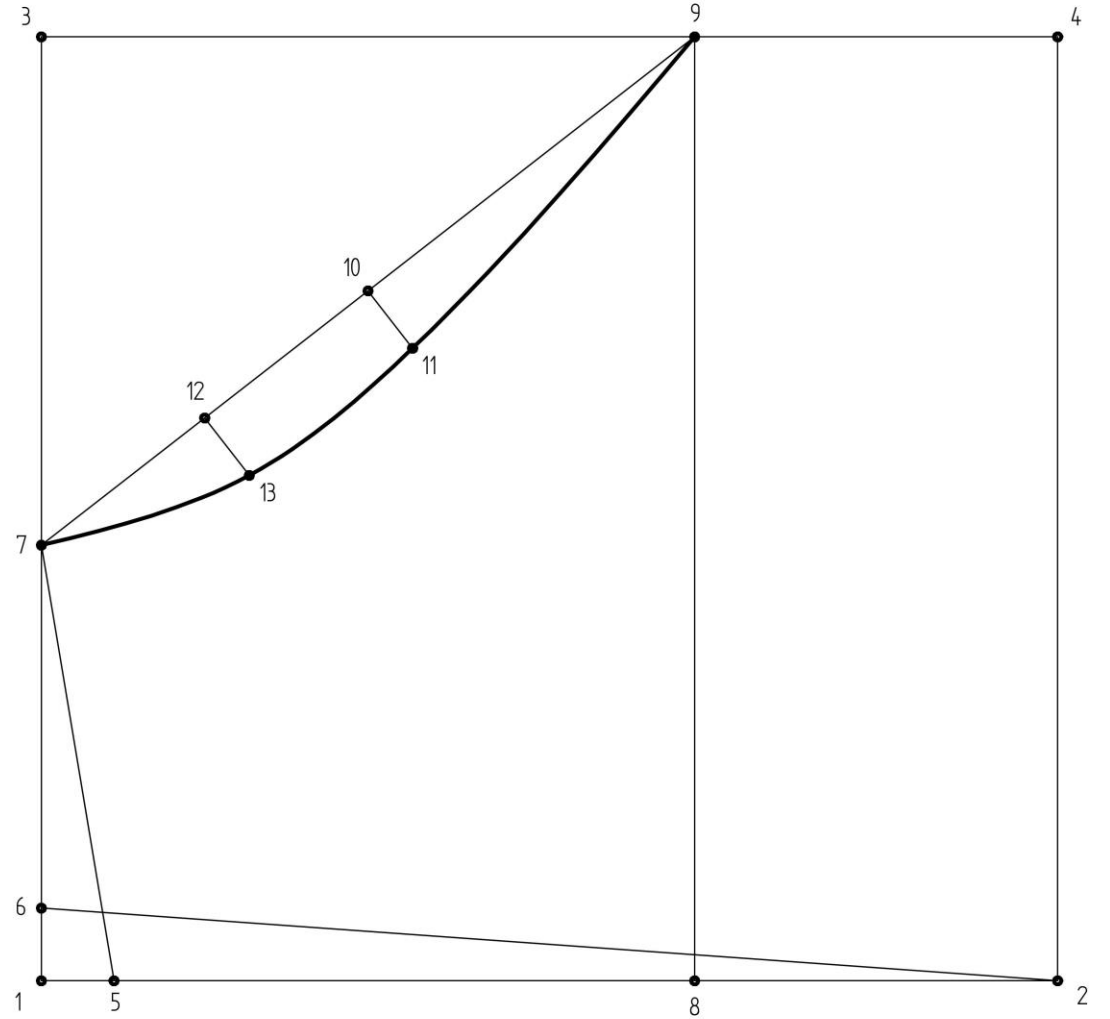
- Draw the line connecting points 7 and 9
-
- Find half the length from 7 to 9 and mark it as point 10
 - Draw a vertical line from point 10 facing downwards and on it measure 1 cm (point 11 is created)



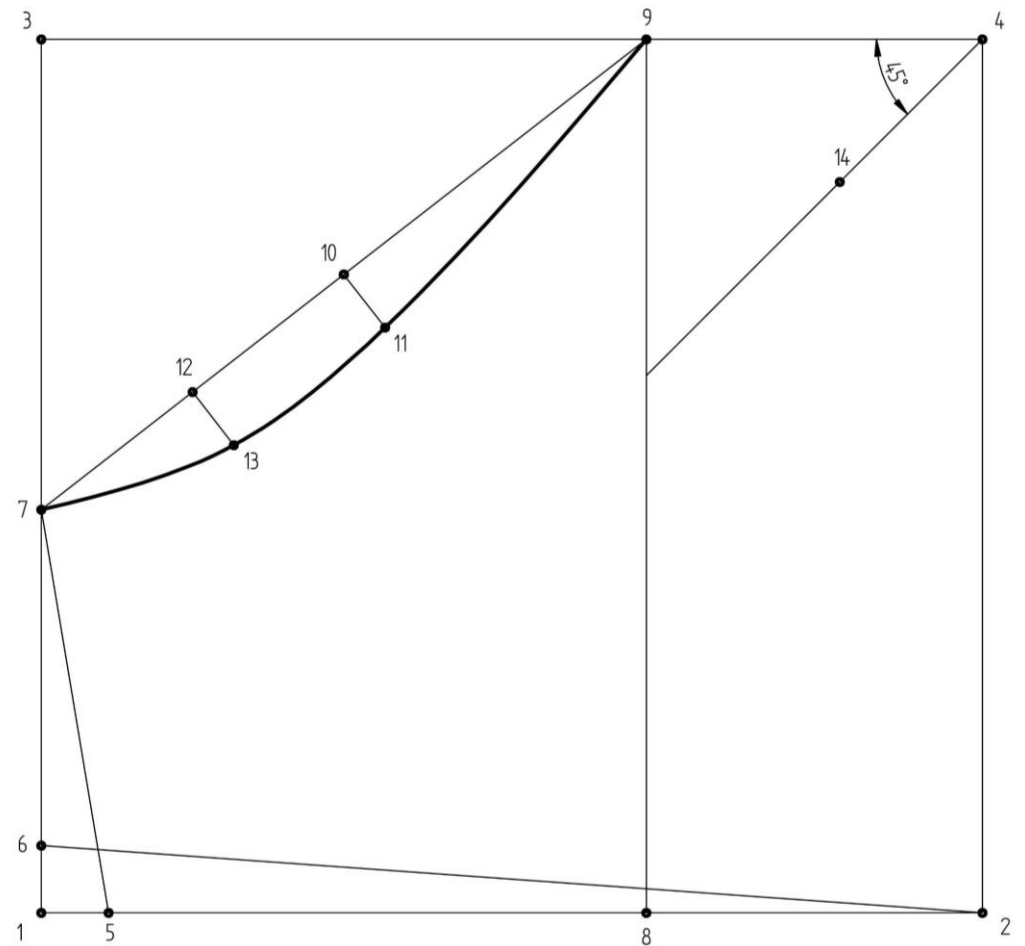
-
- Find half the length from 7 to 10 and mark it as 12
 - Draw a short vertical line from point 12 facing down.
 - Measure 1 cm (point 13 is created)



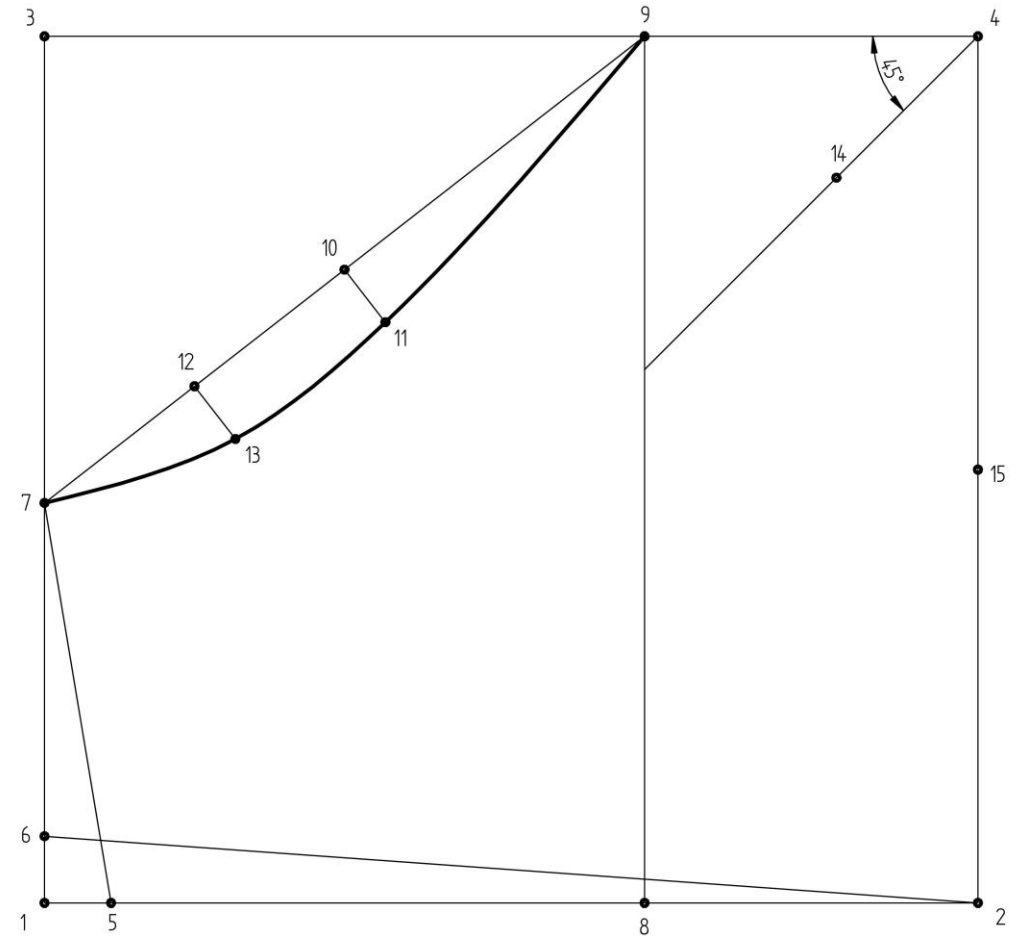
-
- Form a curve passing through points 9, 11, 13 and 7.



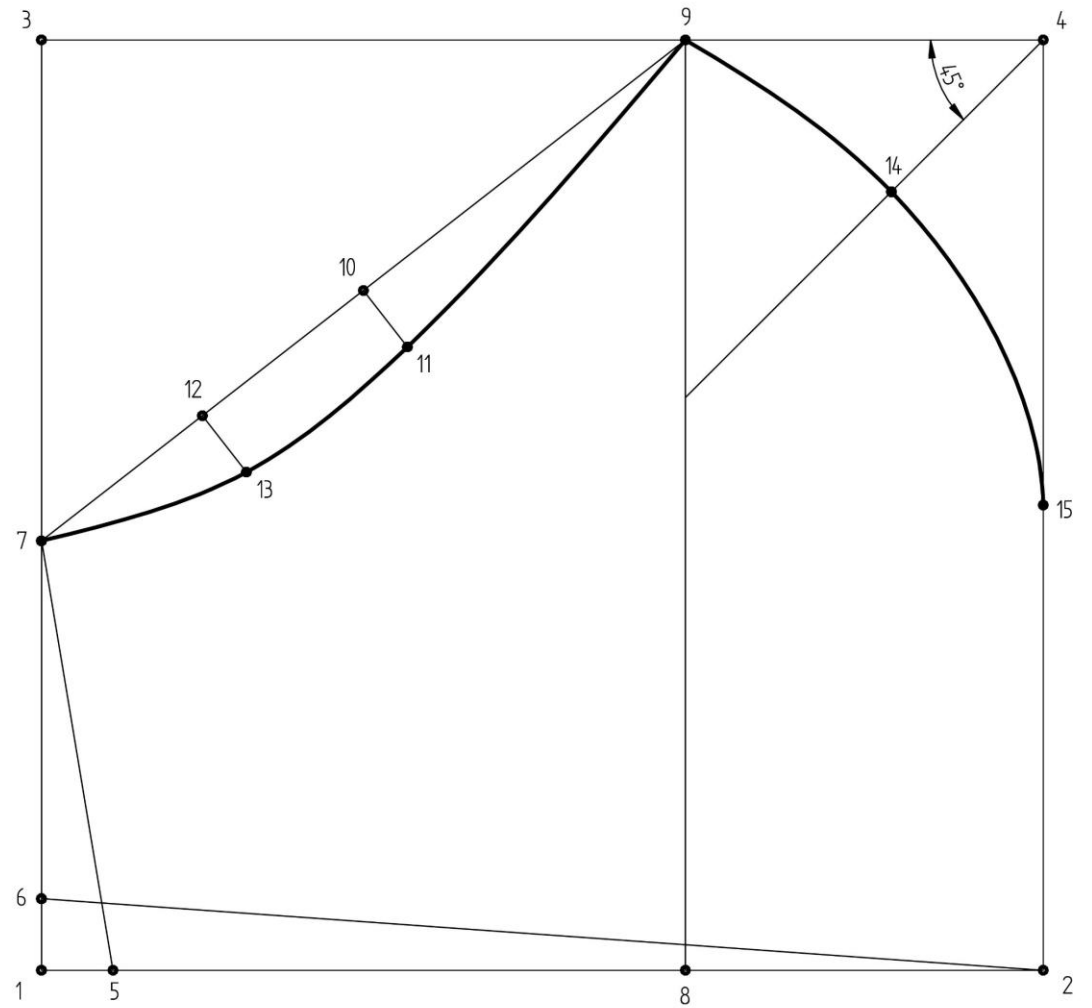
-
- At point 4 determine the angle of 45 degrees
 - On this line from point 4 downwards measure 3 cm (point 14)



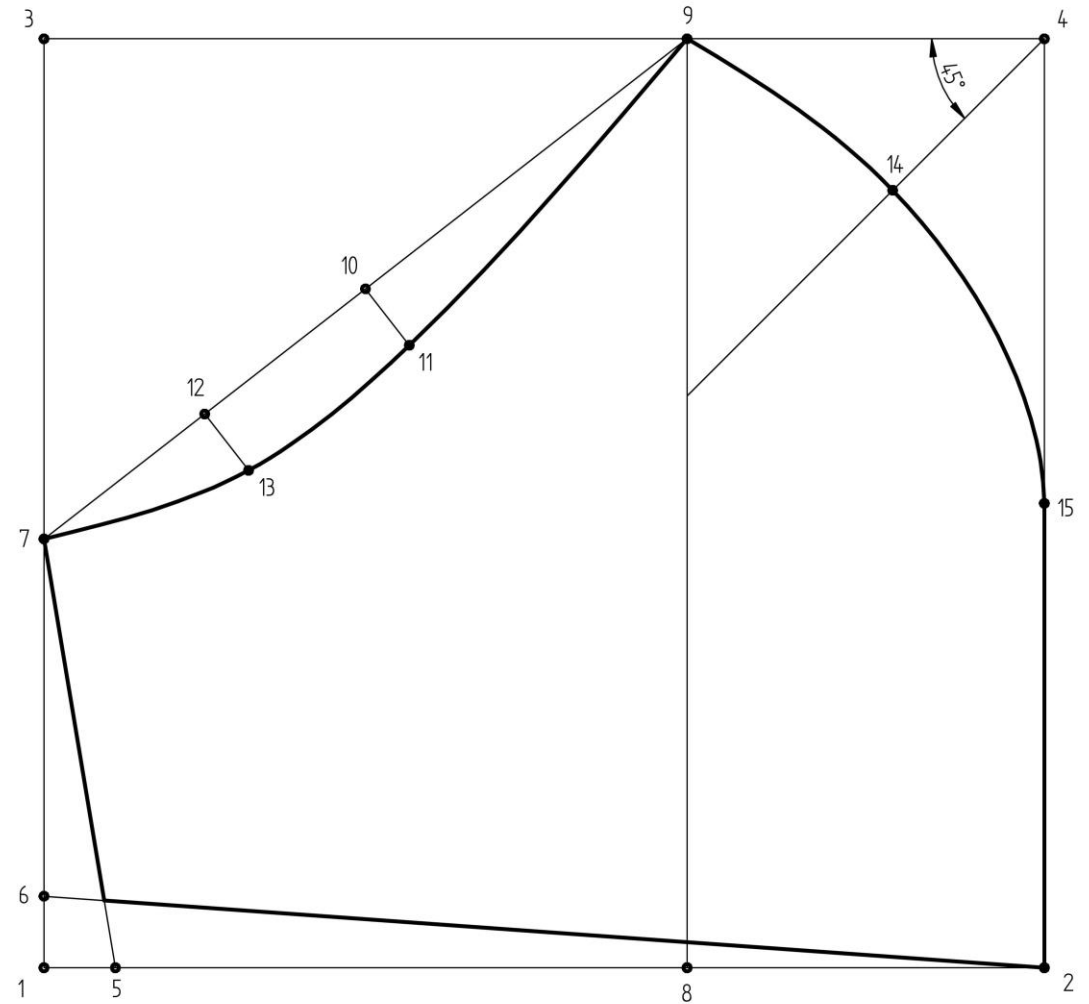
-
- Mark half the length between points 2 to 4 (point 15)



-
- Form a curve passing through 9, 14 and 15.



-
- Highlight contour lines



-
- Mark the grainline
 - Add seam allowances (on the front part 0.5 cm, on all other sides 1 cm)
 - Add other tags (notches, etc.)

