

FABRIC FACE MASK

June 2020

THE PRODUCT



This cloth face mask is non-medical, yet it can be used to protect yourself and others from respiratory droplets.

By covering both your nose and mouth, it also prevents you from touching them with your hands and helps you to protect yourself in crowded settings when you cannot maintain your distance. IT IS NOT A SURGICAL FACE MASK, but it helps to reduce the community spread of viruses.

We recommend you to machine-wash your cloth face mask after each use (4 hours at most each day), carefully remove your mask by grasping the elastic strings, put it directly into the washing machine (use a heavy-duty detergent and the warmest appropriate water). We highly suggest you to at least have two face masks!

AFNOR recommends using 100% tight-weave cotton fabric. This design was adapted from a Japanese tutorial, it has a filter pocket.

According to @coutureetpaillettes, a fabric engineer specialized in this field, the best filter to use is a handkerchief, it is better than a tissue or an anti-static furniture polish wipe.

Be sure to handle it with clean hands.

MATERIAL

- 30 cm of woven fabric 100% cotton (popeline type). The fabric weave should be very tight.
- Some elastics :
 - o Child 4/8 years old : 2 x 17 cm
 - o S 10/12 yo : 2 x 18 cm
 - o M/L : 2 x 17 cm (woman) ou 2 x 19 cm (man)
 - o XL : 2 x 19 cm
- For the drawing of the pattern : two A4 paper sheet or A3, pencil, ruler
- Sewing : scissors, pins, sewing machine, thread.

CONTACT

For any further information about the tutorial below, I'm available by e-mail clemence.gillet@ac-versailles.fr or through the Instagram account @lycee_louise_michel_nanterre

#diymask #diyenguerre #sewistasaufront #jecoudsmonmasque
#solidaritecoronavirus #confinementcreatif #couturedebutant

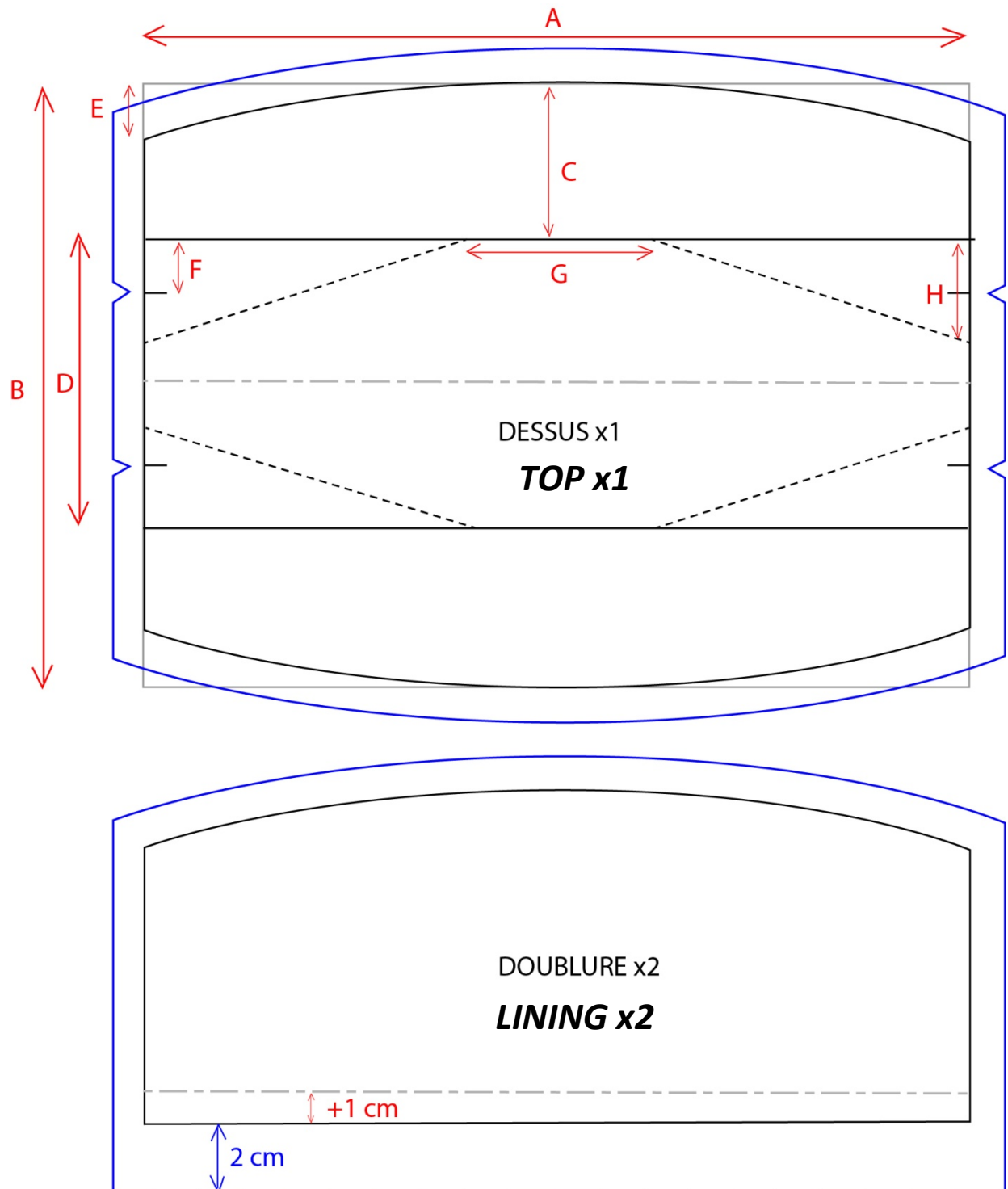
THE PATTERN

➤ TOP

- Draw the AxB rectangle. Draw the parallele at C cm. Place a dot at E cm and draw the curve.
- Place the notch at F cm. Place the G value in the middle and join by a dotted line up to the H height.
- Draw the parallele at 1 cm distance all around (= sewing value)

➤ LINING

- Trace off the horizontal half part of the TOP.
- Add 1 cm at the bottom. Draw the sewing value (1 cm around, 2 cm at the bottom)

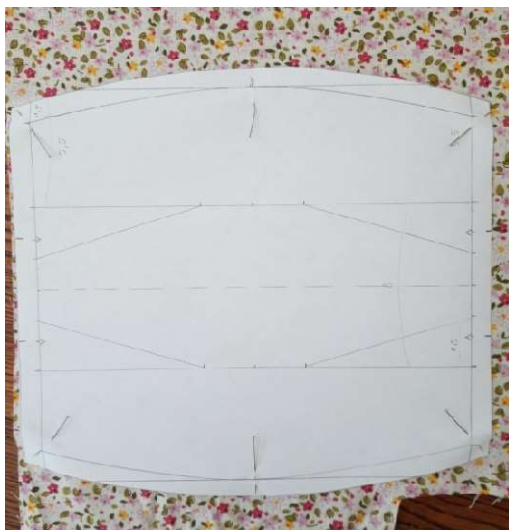


Mesurements are not real on this scheme.

➤ MESUREMENT

Size	Child 4/8 yo	S (10/12 yo)	M/L <i>Standard mixte</i>	XL
A	17	19	21	23
B	12	16	19	20
C	3	4.5	5.5	5.5
D	6	7	8	9
E	0	1	1.5	1.5
F	1	1.5	1.5	2
G	4	5	5	6
H	2.5	3	3.5	4

THE CUT



- Pin the pattern on the fabric in the straight line (= vertical of the material)
- Cut the TOP once
- Cut the notch by making very small V in the sewing value.
- Cut the lining twice.

THE SETTING



- 1.** Iron the hem of the 2 pieces of LINING : 1 cm and another 1 cm.
- 2.** Stitch the hem at 2 mm from the folding (= to hem)

3. Pin the elastics at the length define above, following the notch, ON THE FRONT SIDE of the fabric.



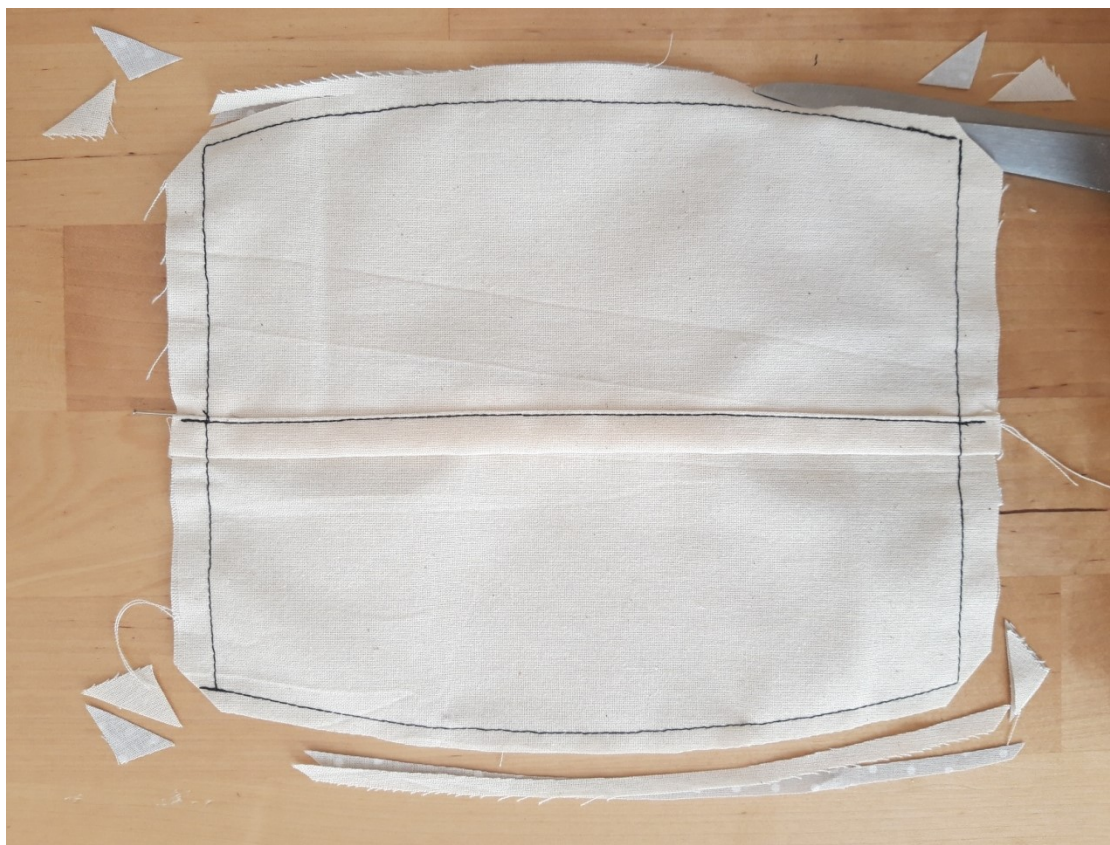
4. Pin the 2 linings on it. (front side of TOP's fabric against front side of linings)



5. Sew all around at 1 cm distance.



6. DISMANTLE : - Angles : cut the 4 angles while leaving 2 mm near to the seam.
- Curves : cut up to 5 mm of the sewing value all along the curves.



7. Turn it inside out. For angles, push slowly with a closed scissors. CAREFUL to not make a hole !

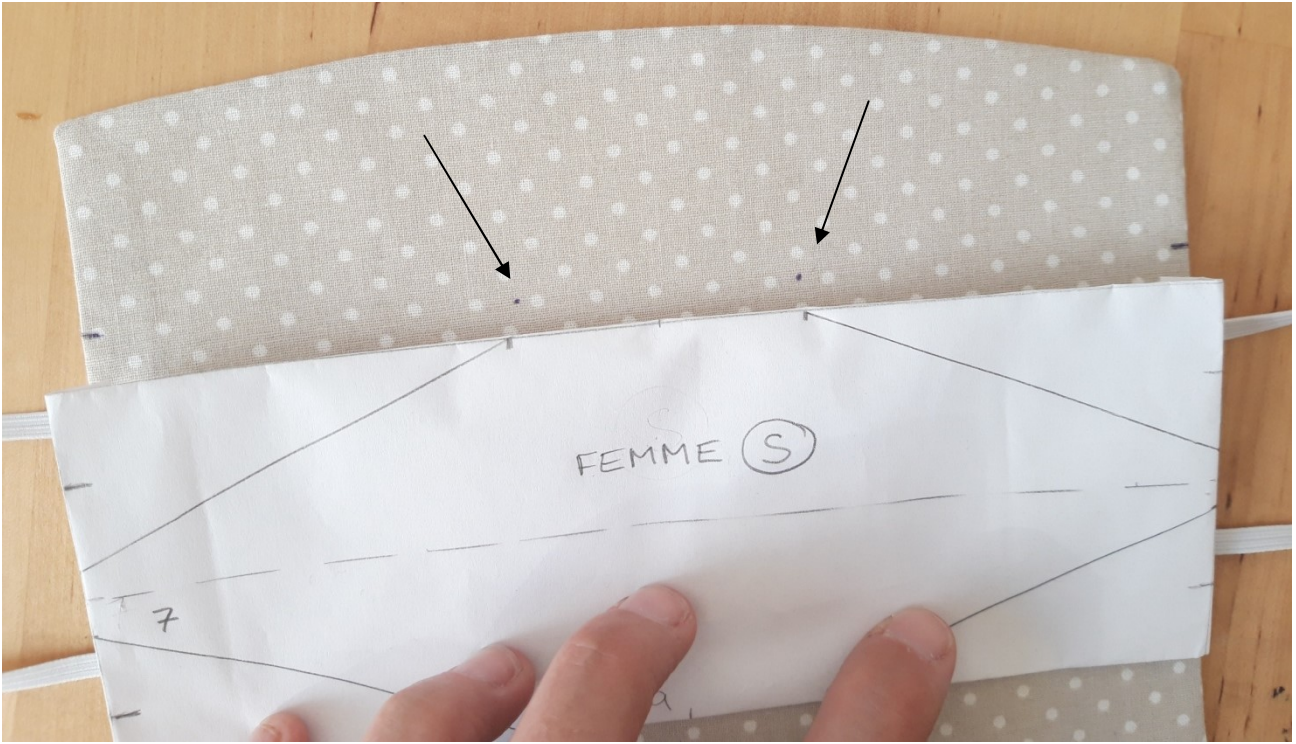
8. Iron while rolling the edge propely. Be careful not to burn the elastics.



9. Fold the pattern and use it to mark the fabric at folding and sewing places.



9bis. Mark the fabric also with the 2 dots of the middle.



10. Iron following the marks. Stitch at 2 mm close to the edge.



11. Stitch the 4 darts following the marks.



**Done ! Please share your photo with us on Instagram
@lycee_louise_michel_nanterre !!!!**

Translate from french by our students : Ambre MOLIDOR, Indeewari RATHNAYAKE, Jeanne ARNOULT, Emma ROSSIGNOL and Coordonate by teachers : Dany JULIUS, Clémence GILLET.