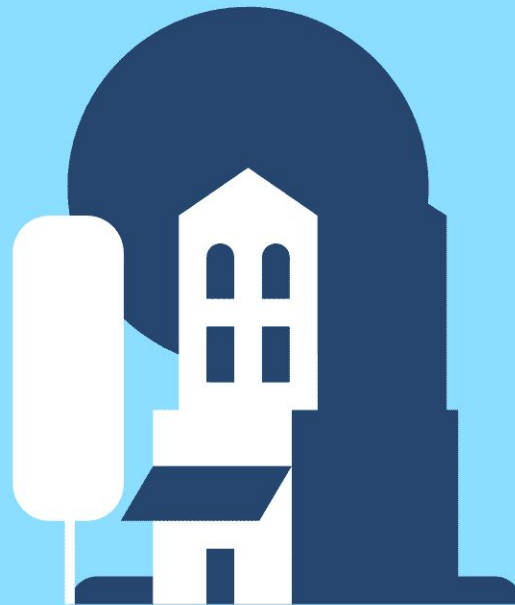


# Holiday resort “Owl Hut”



Sowia Chatka

# Company logo

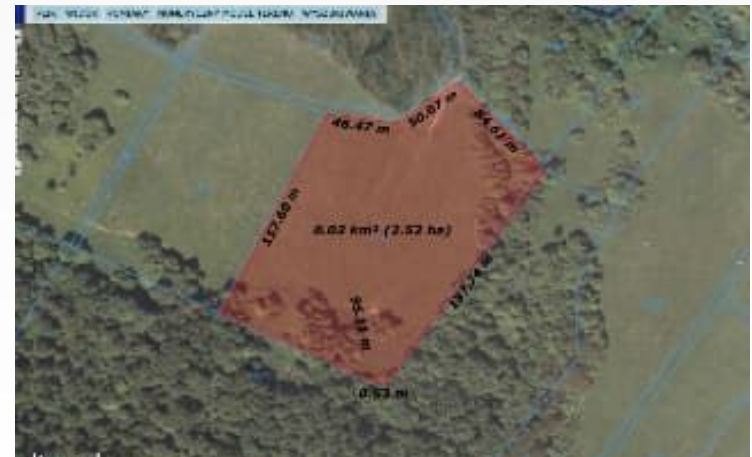


**Sowia Chatka**

# Location

The "Sowia Chatka" Center is located in the small town of Bereżki in the south-eastern part of Poland.

The offer is addressed to customers from both the country and abroad, coming to Poland for tourism, relaxation and sightseeing.



# The village of Bieszczady– Bereżki

It is located in the Podkarpackie Province, in the Bieszczady County, in the Lutowska commune. It is situated by the provincial road No. 896, and more precisely where the Bystry stream flows into Wołosate.

Taking advantage of the picturesque routes perfectly prepared for hiking, our guests will be able to admire the nature and visit one of the most famous nearby towns, Ustrzyki Górne. The town is located 4 km from the resort and in its vicinity there are the highest peaks of the Polish Bieszczady: Połonina Caryńska (1297 m), Wielka Rawka (1304 m) and Tarnica (1346 m).



# About The Complex

The hotel is a tree house complex centered within a forest. The unusual nature of the project consists in placing the houses (room + bathroom) on trees and wooden stilts. The property is located in the owner's forest complex, away from the city. An unquestionable natural attraction is the vicinity of the Bieszczady National Park. The hotel can provide services to its clients for 7 months a year (April to October).



# Services

**The range of services will include:**

**- Accommodation**

**10 huts - each can accommodate min. 2 people/max. 4 people**

- Renting one house per day is PLN 300
- With longer lets and for bigger groups rates are negotiable

**- Food (Healthy Cuisine based on locally- grown ingredients)**

- Full board
- Half board
- Self-catering option

**- Trips to tourist attractions**

**- Guide care**

The complex has been prepared with a vision to expanding it with additional attractions such as a swimming pool, mini bar and spa.

# Ecological Advantages

The hotel tree house complex has been built with the environment in mind using technologies that protect the environment, some of which include:

- Solar Panels and wind turbines which provide electricity to the hotel complex
- Sustainable building materials
- Recycled materials



# strengths of the company

-Qualified personnel ensuring a high level of service

-Attractive form

-Modern equipment

-Suiting the services to the individual client's needs

-Organic regional cuisine

-A location offering a comfortable rest

-Having kitchen facilities and an agritourism farm



# Thank you for your attention!



We are looking forward to seeing you in our holiday resort.  
For more information contact us at:  
[www.owlhut.gmail.com](http://www.owlhut.gmail.com)

The project was made by:  
Michalina Porwit  
Milena Czak

Sowia Chatka