



Erasmus+

Collège Calmette et Guérin,

Ecueillé,

France





S.A.V.E.

Part 2, How eco-friendly is my local area ?





We have studied 5 aspects concerning our local area :

- 1) The results of the « How eco-friendly are you ? » questionnaire
- 2) How waste is sorted in our local area
- 3) The different types of pollution in our local area
- 4) Biodiversity in our region
- 5) The different types of actions to improve the protection of our environment
-

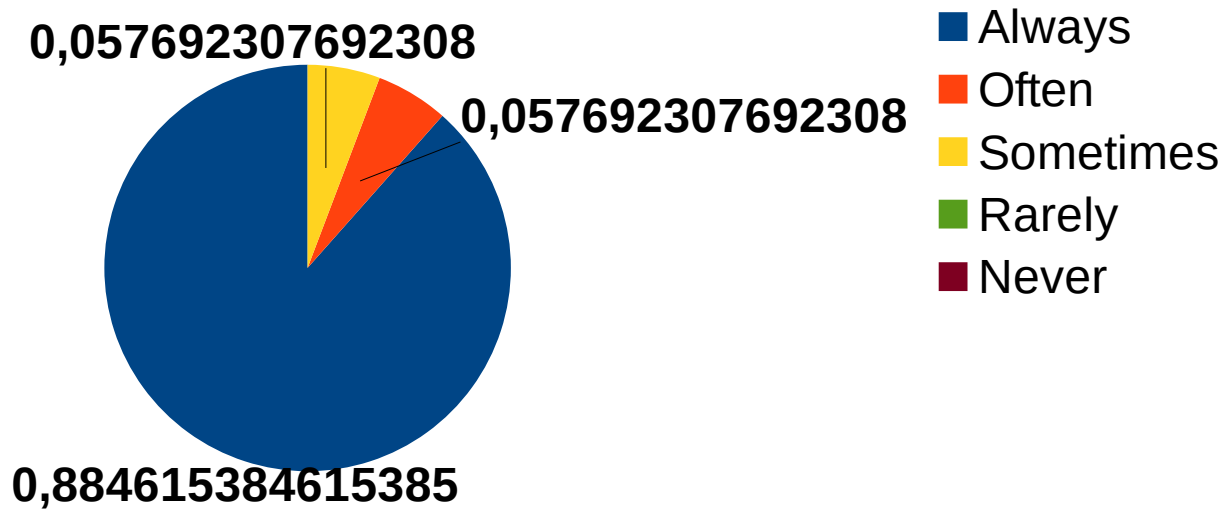




1) Results of the « How eco-friendly are you ? » questionnaire



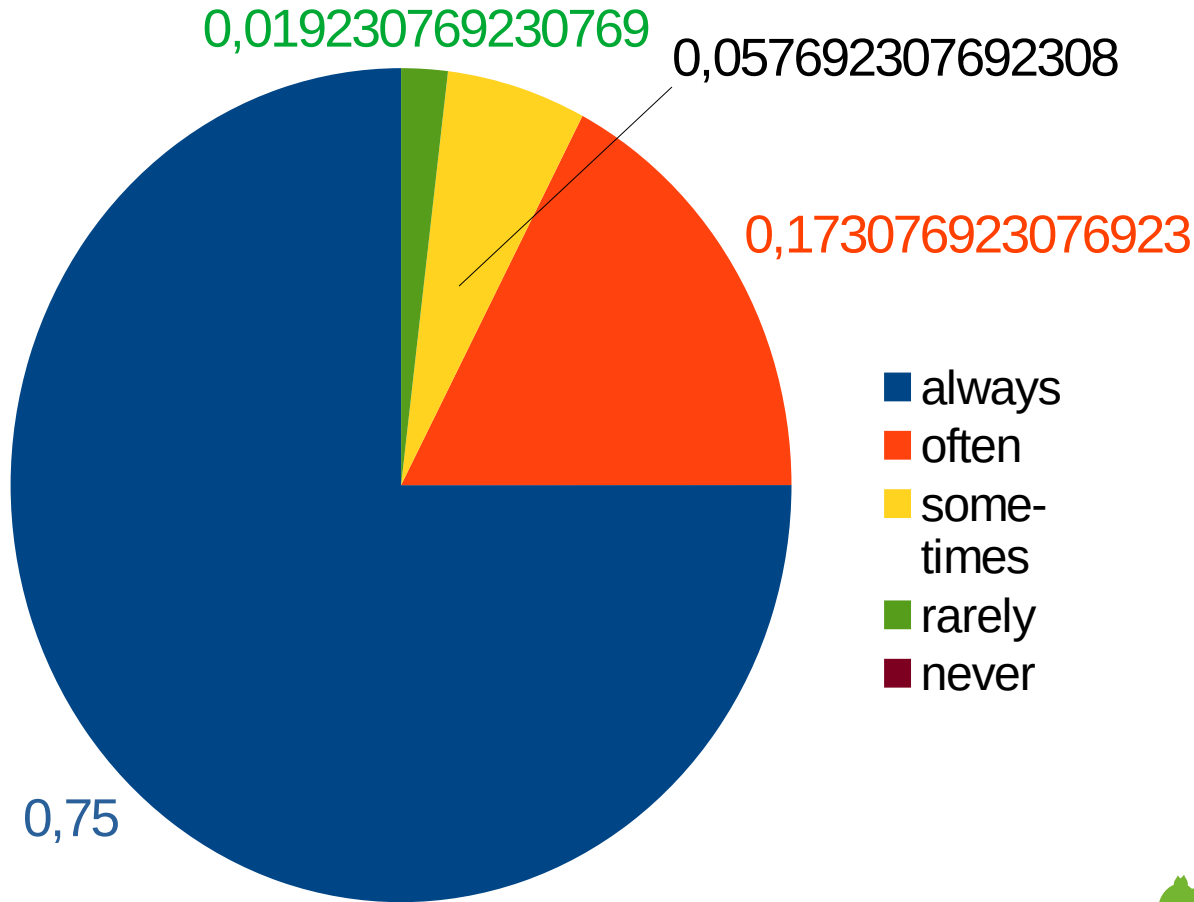
Do you have a shower instead of a bath ?



- 89 % people prefer having a shower because it is faster. It is good for the planet because we consume less water.
- The baths are more used for babies or toddlers.



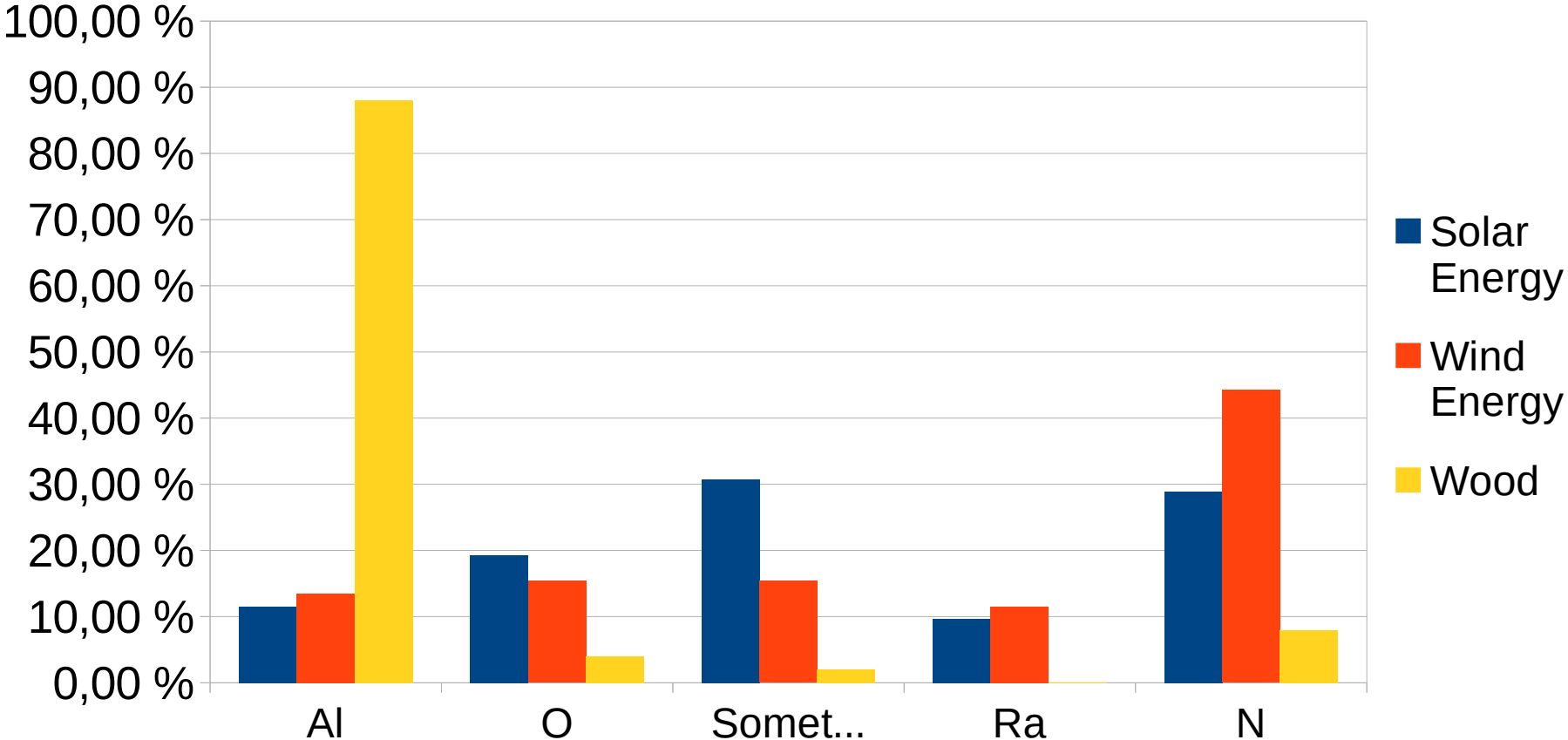
Do you compost your kitchen scraps?



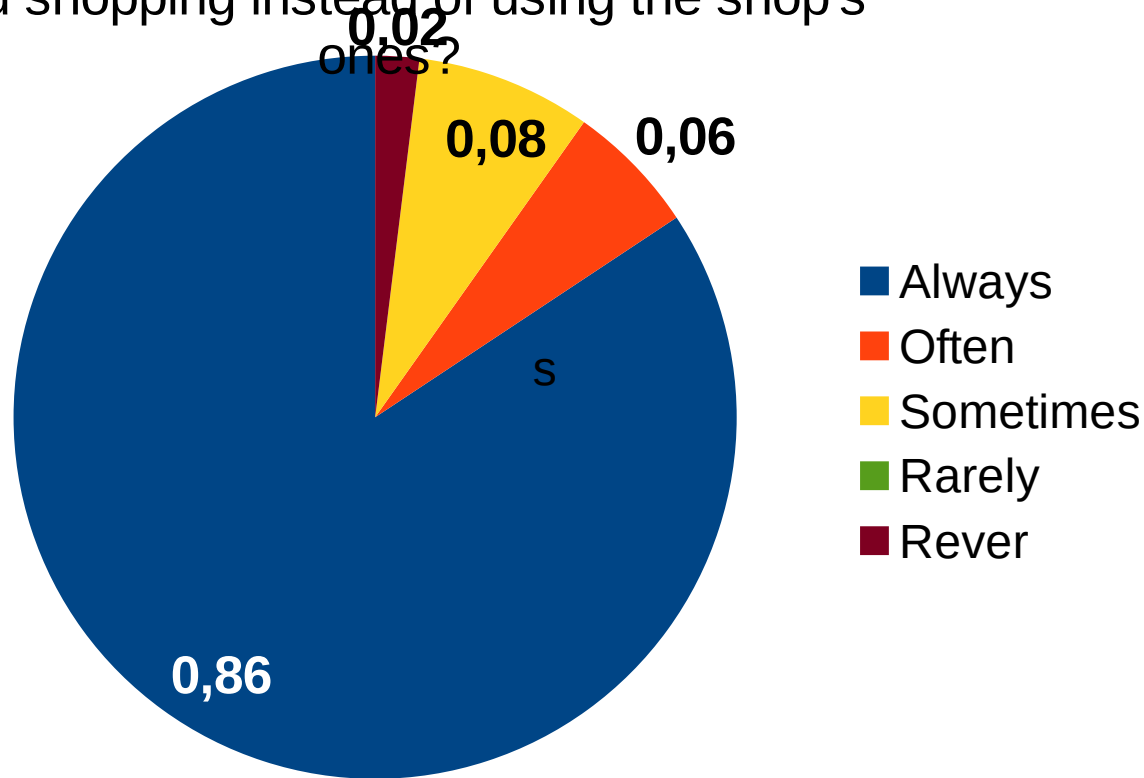
- About three quarters of people compost their waste.
- Waste sorting includes a « bio - bucket » (= a bin dedicated to organic waste) for only a few months.



What kind of energy is mostly used ?



Do you carry your own bags or basket when you shopping instead of using the shop's ones?



In France the law limits the use of plastic bags, so we always have our own bags or basket.



Do you pay attention to the ingredients or product you usually buy ?



- Only around 57 % of people pay attention to where their purchases come from.
- Products from organic farming are still often very expensive in France so it is difficult to buy them for many people.





2) How waste is sorted in our local area





In Ecueillé, our little town, since January 1st 2022, the local authorities have decided to adopt strong actions to recycle waste. Indeed, before, waste was recycled but there were not so many different bins.



A recycling poster with a yellow background and green text. The title at the top reads 'CHEZ VOUS, TOUS LES EMBALLAGES SE TRIENT'. Below the title, it says 'JETEZ VOS EMBALLAGES VIDES, EN VRAI ET NON IMBRIQUÉS'. The poster is divided into four sections, each with an image of waste and a label: 'Tous les papiers' (stack of newspapers), 'Emballages en métal' (various metal cans and containers), 'Bouteilles et flacons en plastiques' (plastic bottles and containers), and 'Briques et emballages en carton' (cardboard boxes and containers). At the bottom, there is a section for 'Autres emballages en plastique' (other plastic packaging). At the very bottom, it asks 'VOUS AVEZ UNE QUESTION ?' and provides contact information: 'Contactez le service prévention des déchets : 06 86 40 16 45'.



Organic Waste

- At home, we have a dedicated bucket where we put organic waste.



- Once the bucket is full we empty it into the organic waste bin which is in the street (there is one in every street).





Green and yellow bins



- In the yellow bin we put the plastic, cardboard, metal packaging and all the papers .

- In the green bin we put the rest of the waste.





Glass bin



- In the glass bin we put everything that is made of glass but not broken.





A bin to recycle clothing

- In the clothes bin we put everything that is made from fabrics. Then the clothes are given to associations which clean them and give them to people who need them. It is solidarity !





Recycling Centre

- In the recycling centre we put big items like pieces of furniture, bits and pieces of wood, metal, plastic ...





3) The different types of pollutions in our local area





In general, there are different types of pollution

1. Air Pollution.
2. Water Pollution.
3. Soil Pollution.
4. Sound Pollution.
5. Light Pollution.
6. Thermal /Heat Pollution.
7. Radioactive Pollution.





In our local area, we are mainly concerned by

- air pollution
- water pollution
- soil pollution





In our local area, we are not too much concerned by car pollution





We are not concerned by industrial pollution either because we don't have a lot of industries





Pollution around Ecueillé is mainly caused by the use of pesticides by farmers.

They come from chemical pollutants which are disseminated in the air, in water or in soils.





We are mainly concerned by the chemical pollution generated by farming





- The consequences of these pollutions concern the environment but also animals and human beings.
- They breathe or swallow the chemical pollutants and they become ill : they can suffer from bronchitis, diabetes, Parkinson disease, prostate cancer or other types of cancer, cognitive disorders





That's why we must be aware of this pollution to try to stop it.

Let's buy organic products for example because they are grown without chemical pesticides !





4) Biodiversity

in our region





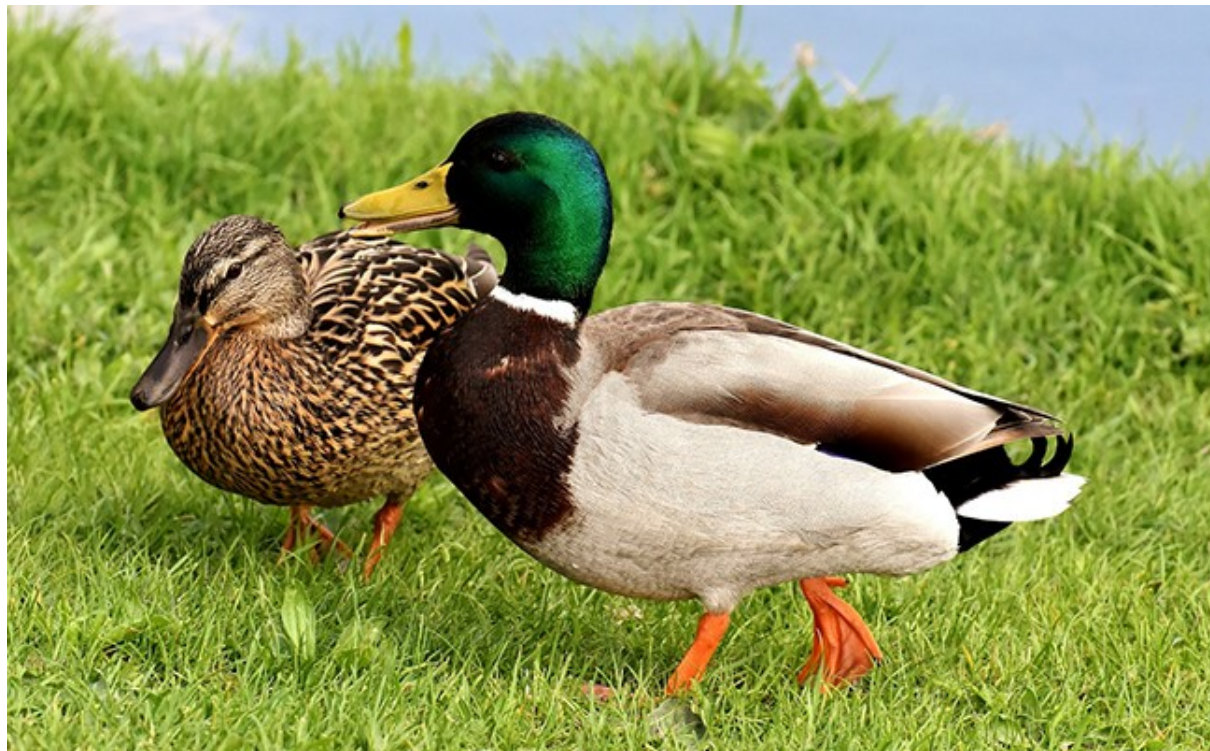
In our region, which is mainly rural, we have a lot of fauna and flora.

A lot of animals live wildly in nature like ducks, hares, foxes, pheasants, deer, bars...





Ducks





Hare





Pheasant





Squirrel





Deer





Stag





But some animals need to be regulated otherwise there are too many of them and they can damage cultures like wild boars !

That's where hunters play an important role : they kill the animals which are in great numbers.





Wild boar





There is also an animal reserve, La Haute-Touche animal reserve where people protect and study animals.

For instance the cistude turtle is protected there, but also wolves, deer, red squirrels, linx... This reserve is part of the Natural History Museum located in Paris : it means scientists work there.





[https://www.youtube.com/watch?time_continue=6
&v=AA5zZK99hNs&feature=emb_logo](https://www.youtube.com/watch?time_continue=6&v=AA5zZK99hNs&feature=emb_logo)





The European pond turtle or cistude - a freshwater turtle that is still commonplace in Brenne - is a European reptile which has seen the largest decline in its numbers over the past twenty years. Now, they are released in one of the Brenne lakes. The intention is that in the future this project will be extended to other French regions and other European countries.





5) The different types of actions to improve the protection of our local environment





In our region, actions are taken to produce green electricity:

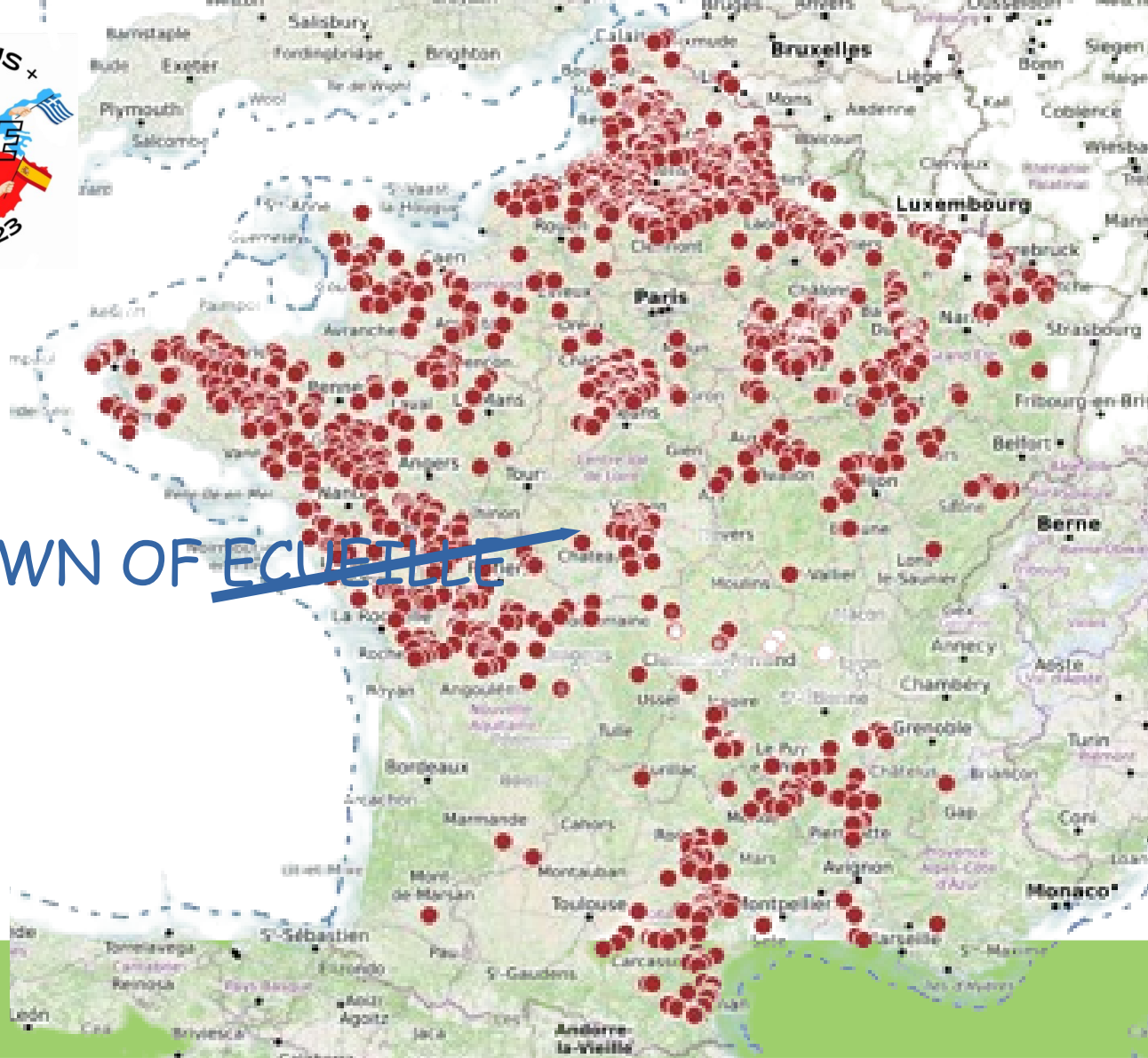
- More and more local communities have decided to have wind turbines
- Individual farmers install solar panels on their barns houses





Wind turbines in our region



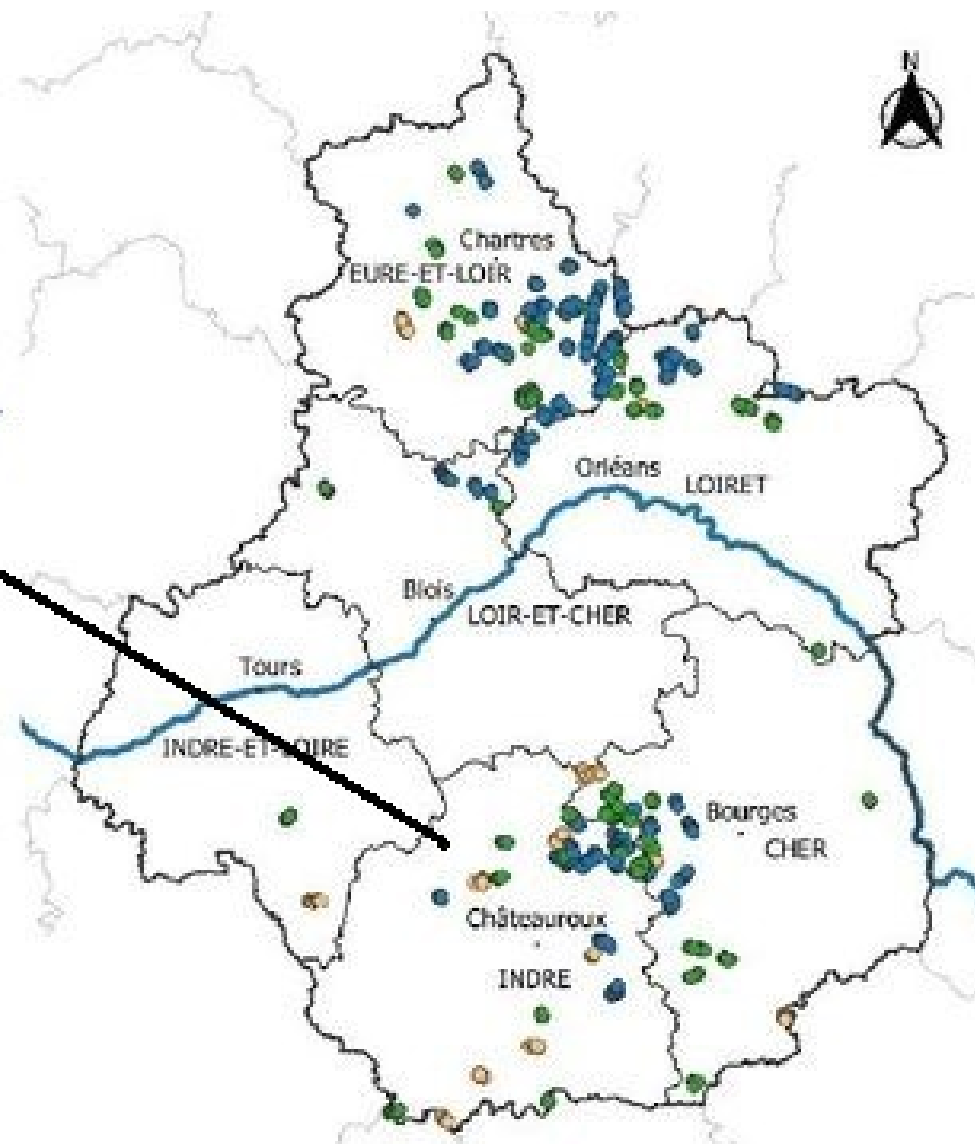


TOWN OF ~~ECLUETTE~~





*Town of
Ecueillé*





Electricity produced by wind turbine stations comparison

France	Spain	Greece	Italy	North Macedonia
16 646 MW	25 808 MW	3 576 MW	10 512 MW	37 MW

Of course, it depends on the size of the country





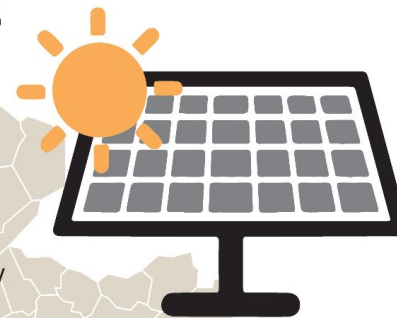
Solar panels are more and more common. They are photovoltaic panels, they produce electricity that is often sold back to big electric companies.



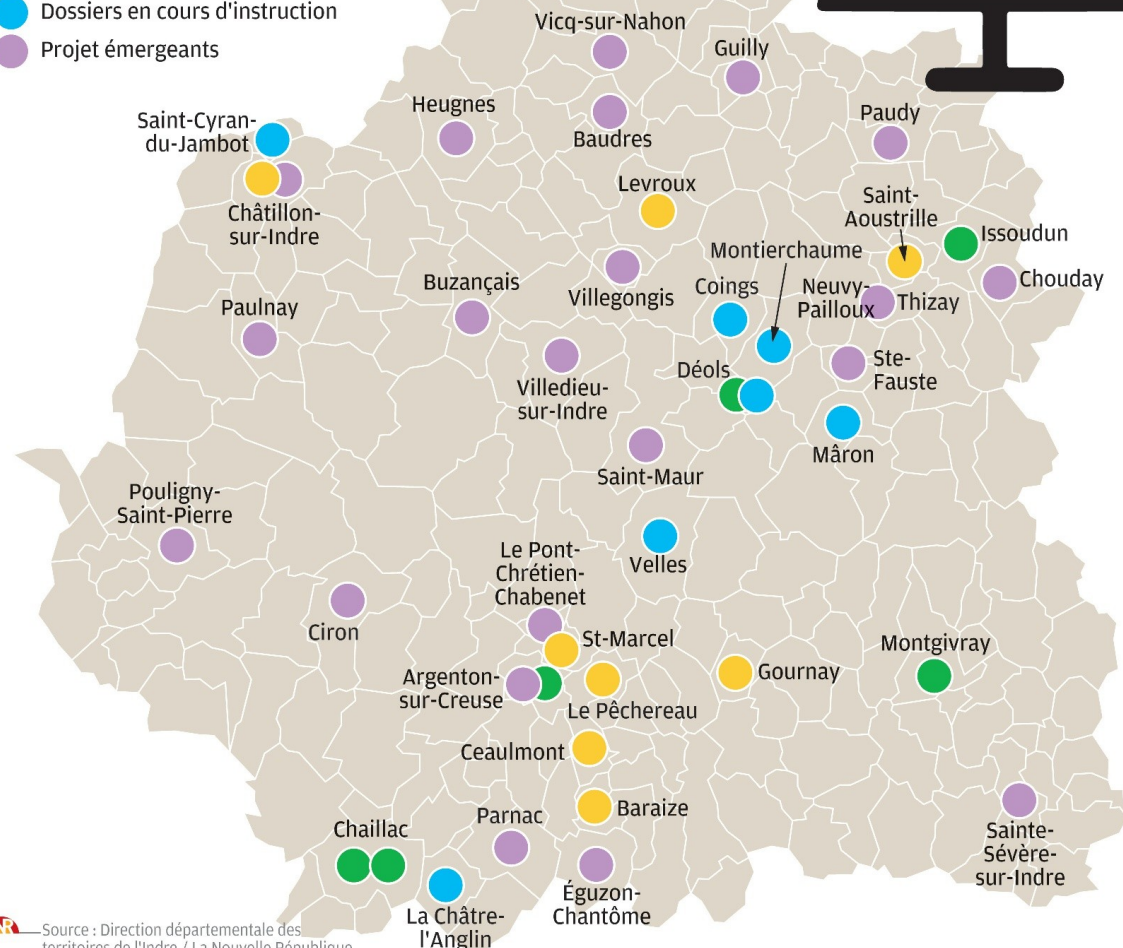


L'Indre se couvre de panneaux solaires

Centrales photovoltaïques au sol raccordées, autorisées ou en projet au 1^{er} janvier 2021.



- Projets construits et raccordés
- Projets autorisés non raccordés
- Dossiers en cours d'instruction
- Projet émergents



Source : Direction départementale des territoires de l'Indre / La Nouvelle République.





Electricity produced by solar panels comparison

France	Spain	Greece	Italy	North Macedonia
14 300 GWh	15 552 GWh	4 358 GWh	23 689 GWh	No information

Of course, it depends on the size of the country





More and more people buy electric cars or hybrid cars instead of cars using petrol (like diesel cars for instance).

Consequently, a lot of our local towns and villages now have charging stations for electric cars.





Charging stations map in our local area

<https://ir.chargemap.com/map>





Number of electric charging stations comparison

France	Spain	Greece	Italy	North Macedonia
57 732	6 796	450	11 695	23

