

PLOVDIV REGIONAL ARCHAEOLOGICAL MUSEUM



This presentation is made by: Dimo and Veselin
Secondary school „Vasil Levski“
Haskovo / Bulgaria.

THE MUSEUM HAS ONE OF THE RICHEST COLLECTIONS OF 100,000 ARTEFACTS RELATED TO THE HISTORY OF PLOVDIV AND ITS REGION. THE TOWN IS AN HEIR TO ONE OF THE BIGGEST AND MOST FAMOUS ANCIENT TOWNS IN THE BALKAN PENINSULA.

IT STARTED AS A CULTURAL INSTITUTION IN 1882, AND TURNED INTO A MUSEUM IN 1920.

THERE ARE **7 COLLECTIONS** IN IT:

- PREHISTORIC ART
- THRACIAN ART
- ANCIENT GREEK ART
- ROMAN ART
- MEDIEVAL ART
- BULGARIAN REVIVAL ART
- NUMISMATIC COLLECTION



www.bulgariatravel.org

images from: museum site / dariknews.bg / bulgariatravel.org

ONE OF THE MOST VALUABLE AND VISITED COLLECTIONS IS
THE THRACIAN COLLECTION.

IT IS FAMOUS FOR ITS UNIQUE
**PANAGYURISHTE GOLDEN
TREASURE**

(REPLICA) AND CONSISTS OF NINE GOLD
VESSELS WITH A TOTAL WEIGHT OF 6.100
KG. IT WAS DISCOVERED IN 1949 NEAR
PANAGYURISHTE TOWN.

THE THRACIAN TRIBE CALLED ODRYSSAES
INHABITED THE REGION OF PLOVDIV IN THE
5 - 1 C. BC. IT WAS THE ONLY ONE AMONG
ALL THE 46 KNOWN THRACIAN TRIBES THAT
SET UP A FORM OF GOVERNMENT HEADED
BY A ROYAL INSTITUTION.

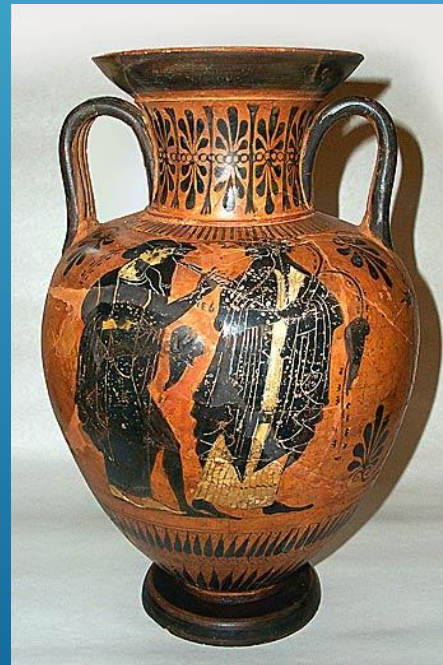
THE REAL GOLDEN TREASURE WAS MOVED
TO THE MUSEUM OF PANAGYURISHTE TOWN
SEVERAL YEARS AGO – TO THE PLACE
WHERE IT BELONGS.



image from omda.bg

THE ANCIENT GREEK AND ROMAN ART COLLECTION CONTAINS MORE THAN 5,000 EXHIBITS:

- 200 BRONZE STATUETTES OF IDOLS WORSHIPPED BY THE THRACIANS
- OVER 100 BRONZE ORNAMENTS OF CHARIOTS, PIECES OF FURNITURE AND BRONZE VESSELS
- MORE THAN 500 ROMAN CLAY LAMPS MADE IN THE TOWN
- MOSAICS IN CIVIL AND RELIGIOUS BUILDINGS
- BLACK-AND-RED-FIGURED CERAMICS PRODUCED IN THE ATTIC WORKSHOPS
- SILVER OBJECTS DECORATED WITH GILT FIGURES AND GREEK PANTHEON MYTHOLOGICAL SCENES
- GOLD JEWELRY OBJECTS FOR ADORNING FEMININE BODIES AND CLOTHING



Images from: museum site

BULGARIAN REVIVAL ART COLLECTION

DURING BULGARIAN REVIVAL PERIOD PLOVDIV REMAINED THE BIGGEST AND MOST DEVELOPED TOWN.

THE MUSEUM DISPLAYS RICH COLLECTIONS OF CHURCH PLATES, EARLY PRINTED BOOKS, JEWELRY, BELT BUCKLETS AND BELTS, POTTERY AND LUXURIOUS OBJECTS OF HIGH ARTISTIC VALUE, DATING FROM THIS PERIOD.



images from: museum site