



Geographical facts of Slovakia

Created by Základná škola s Materskou školou Viliama
Záborského
Vráble
Slovakia



Erasmus+



With the support of the
Erasmus+ Programme
of the European Union

Created for Erasmus+ - My country, your country

Quiz 1



- What is this ?



River



Lake



Hill, Peak



Mountain

Slovakia

- Slovakia lies in the heart of Europe.
- It isn't a very big country.
- Its area is about 49 000 km².
- It has got 5 millions inhabitants.
- It borders with countries:
Austria, Hungary, Poland,
Czech Republic, Ukraine.
- Slovakia became an independent country in 1993.
/ 1st January/
- Slovakia became the member of European Union in 2004.



Counties

Slovakia is divided into counties around some bigger cities such as Bratislava county, Nitra county, Trenčín county, Žilina county, ...



Regions

- In the past Slovakia consists of several regions for which it was typical : the speech - twang, costumes and life style.
- We can mention some regions such as Orava, Kysuce, Záhorie, Spiš, Liptov, Gemer, Detva, Pohronie, Považie.
- These regions exist till this time but there aren't so already mentioned differences between them.



Folklore costumes typical for various regions

In each region people wore different costumes in the past.



Bratislava - the capital city

- Bratislava is the capital city of Slovakia.
- It is situated on the river Danube.
- The dominant sight is the castle.
- You could also find other sights such as Michal's Gate, Presidential Palace also called Grasalkovičov, City Hall, ...
- There are museums such as Natural History Museum, National Gallery, Philharmonic Building, ...



Bratislava - the capital city

- The historical building of the Slovak National Theater can be found in Hviezdoslav Square.



The parliament and the President

- The current president of Slovakia is Zuzana Čaputová.
- She resides in the Presidential Palace.
- Parliament building is located next to the castle.



Quiz 1

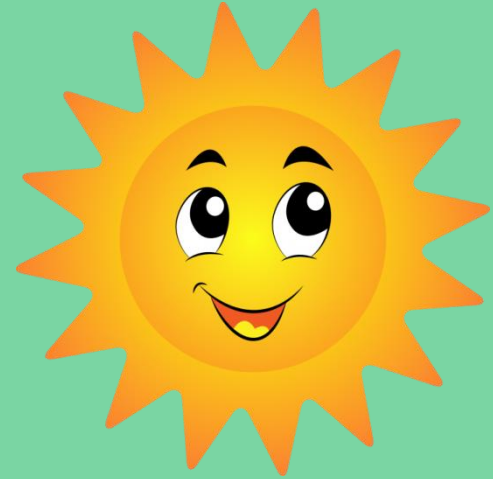
1/ In which year did Slovakia become an independent country?

A / 1998

B / 1993

C / 1991

Correct answer: B - 1993



2. Say the capital of Slovakia?

Correct answer: Bratislava

Slovakian nature

- Slovakian nature is very beautiful. Surface is mostly mountainous, from the North there are the Carpathian mountain, in the South there are lowlands.
- From the mountains we are proud of the Low and High Tatras.



The High Tatras

- The High Tatras are located in the Northeast of our country. They are the highest mountain in Slovakia.
- You can find here mountain lakes such as Štrbské pleso, Popradské, Skalnaté,...
- The highest peak is Gerlach / 2,655 m above sea level. m. /
- From others we can mention Lomnický Peak with the meteorological station, which is important in the weather forecast.
- The symbol of Slovakia is the hill Kriváň. / 2492 m /



The Low Tatras

- Low Tatras are located in the Middle of Slovakia. There are many caves, the most famous is Demänovská limestone cave.
- **There is also Vrbické mountain lake.**
- The highest peak is Ďumbier / 2043 m /, the second is Chopok.



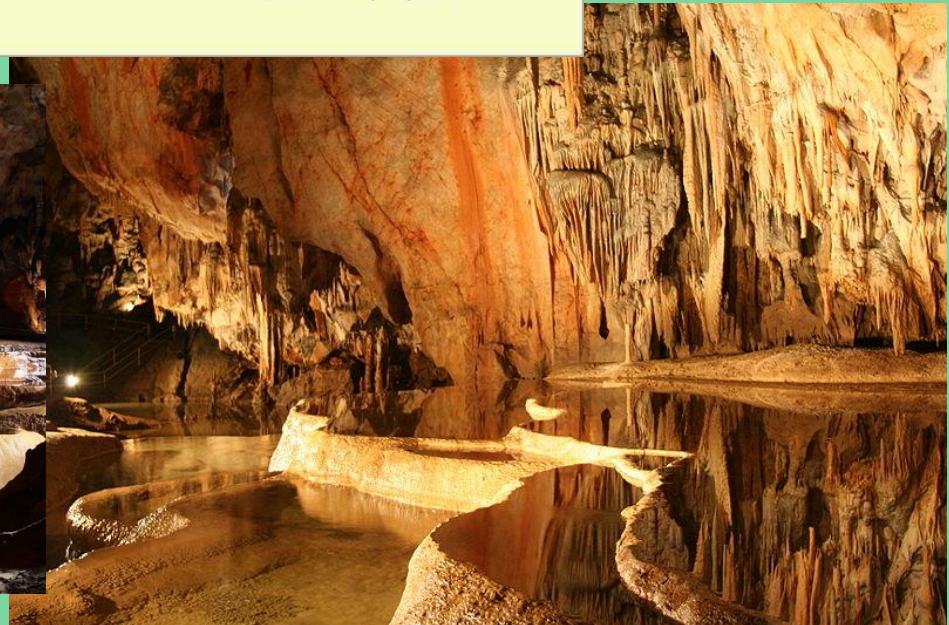
Other mountains

Tourists can also admire the natural beauty in the mountains: Malá a Veľká Fatra / Small and Big Fatra/, Slovenský raj / Slovak Paradise /, Slovenský kras,...



Caves

In Slovakia you can find more caves such as Dobšinská, Harmanec, Ochtinská, Driny,...



Rivers

- We can mention the largest river - the Danube, which crosses the territory of Slovakia.
- But we also have rivers that rises in our country: **Váh, Hron, Nitra, Hornád, Tisa,...**



Spa towns

- Slovakia is rich in mineral and thermal waters.
- They are used as table water and for therapeutic purposes also in spa towns like **Piešťany, Santovka, Dudince, Sliač, Bardejov, Bojnice, ...**



Water dams

Beautiful dams were artificially created in Slovakia.

Liptovská, Oravská, Domaša, Zemplín, ...

which are also used as holiday destinations.



Quiz 3

3. Which is the highest mountain in Slovakia ?

A/ The Small Fatra

B/ The High Tatras

C/ The Low Tatras



- **Correct answer : The High Tatras**

4. Váh is in Slovakia:

A/ the lake

B/ the river

C/ the hill

- **Correct answer : the river**

Quiz 3

Do you remember ?

5 / Which peak is the highest in Slovakia?

A/ Kriváň

B/ Chopok

C/ Gerlach

Correct answer: Gerlach / 2655 m /

Several words about Vrábľe – our town.

- Vrábľe is a small town in Nitra district in the South – West of Slovakia.

- It lies in lowland – Podunajská nľžina

/ Danubian Lowland /

- It lies in vineyard area.

- It has got about 9 thousand inhabitants.



- It is situated 20 km from Nitra, 120 km from the capital city Bratislava.

Thank you for interest

Created by pupils of Erasmus club from Slovakia

Liliana Školníková
Katarína Klimantová
Vladka Štefancová
Diana Sládeková
Bokrošová



Nella Blažová
Vanesa Vaclavová
Hanka Vargová
Sofia Vargová
Karin Švajdová

"The European Commission's support for the production of this publication does not constitute an endorsement of the contents, which reflect the views only of the authors, and the Commission cannot be held responsible for any use which may be made of the information contained therein."

- <https://www.cdb.sk/sk/Vystupy-CDB/Mapy-cestnej-siete-SR/Mapy-krajov.alej>
- <https://www.originalnehracky.sk/p/9583/bigjigs-toys-puzzle-mapa-europy>
- <https://www.dobramapa.sk/obchod/action/productdetail/oc/1729546/product/reliefna-mapa-sr-1500-000.xhtml>
- <https://sk.maps-slovakia.com/slovensko-hrady-mapu>
- <https://www.worldmaps.sk/nastenne-mapy>
- https://www.zborovna.sk/kniznica.php?action=show_version&id=200061
- http://www.1sg.sk/www/data/01/projekty/2017_2018/heralds/slovensko-folklor_mnohych_tvary/kulturne_regiony.html
- <https://www.roughguides.com/destinations/europe/slovakia/bratislava/>
- <https://www.cas.sk/clanok/865285/zuzana-caputova-na-stretnuti-s-francuzskym-prezidentom-prekvapila-novym-ucesom/>
- <https://www.tatry.sk/>
- <https://www.sikovnamamina.sk/kam-s-detmi-jasna-nizke-tatry/>
- <https://www.megaubytovanie.sk/vrchy/gerlachovsky-stit>
- <https://spis.korzar.sme.sk/c/8220490/v-slovenskom-raji-zabludili-styria-holandania.html>
- <https://en.infoglobe.cz/tips-for-trips/sk-mala-fatra-mincol-mountain/>
- <https://tech.sme.sk/c/20919562/od-ruzomberka-az-po-oravu-neboli-ryby-ako-vyzerala-rieka-vah-v-historii.html>
- <https://en.wikipedia.org/wiki/Bardejov>
- https://www.travelguide.sk/svk/pobyty/silvester-kupele-piestany_2847_0_1.html
- <http://www.vypadni.sk/sk/liptovska-mara>
- <https://www.obnova.sk/clanok/ludove-umenie-slovenska-v-parizi>
- https://sk.wikipedia.org/wiki/Historick%C3%A1_budova_Slovensk%C3%A9ho_n%C3%A1rodn%C3%A9ho_divadla
- <https://slovensko-chat.webnode.cz/podrobna-mapa-slovenska/>
- <https://dromedar.zoznam.sk/cl/1001069/1729815/Slovenske-Plitvice--Jazero-na-vychode-laka-exotickou-krasou>
- <http://www.spoznaj.eu/rieka-vah>
- <http://www.spoznaj.eu/na-dumbier-a-chopok-vylet>
- <https://www.infoglobe.sk/horolezecky-sprievodca/vychodne-slovensko-bukovske-vrchy-i-putovanie-divocinou/>
- <https://magazin.centrum.sk/spektrum/smajlik-slavi-okruhle-25-narodeniny/679159.html>
- <https://vyhraj.bupi.sk/skolkvy/134>
- https://roflmagnets.com/index.php?id_product=291&id_product_attribute=21&rewrite=duhovy-otaznik&controller=product&id_lang=1
- <http://www.mkuh.cz/klient-523/kino-157/stranka-4726/film-185180>
- https://hiking.sk/hk/ar/4608/lucky_siroka_dolina_dumbier_javorie_lucky.html
- <https://www.megaubytovanie.sk/zemplinska-sirava>
- <https://www.facebook.com/pg/Zempl%C3%ADnska-%C5%A0%C3%ADrava-655536661127536/posts/>
- https://en.wikipedia.org/wiki/Danubian_Lowland
- <https://www.pinterest.de/vincojanina/jaskyne/>
- <https://www.strbskepleso.sk/co-tu-zazijete/turistika/zo-strbskeho-plesa-na-krivan-a-spat>
- [https://sk.wikipedia.org/wiki/Hnilec_\(rieka\)](https://sk.wikipedia.org/wiki/Hnilec_(rieka))
- <https://www.infoglobe.sk/horolezecky-sprievodca/sr-vysoke-tatry-vystup-do-sedla-pod-ostrovou/?action=2>
- <https://slovakregion.sk/jaskyne>