

# Education system in Joensuu

Jani Kaasinen

Development director, Ph.D (education)

[jani.kaasinen@joensuu.fi](mailto:jani.kaasinen@joensuu.fi)

# Welcome to Joensuu!

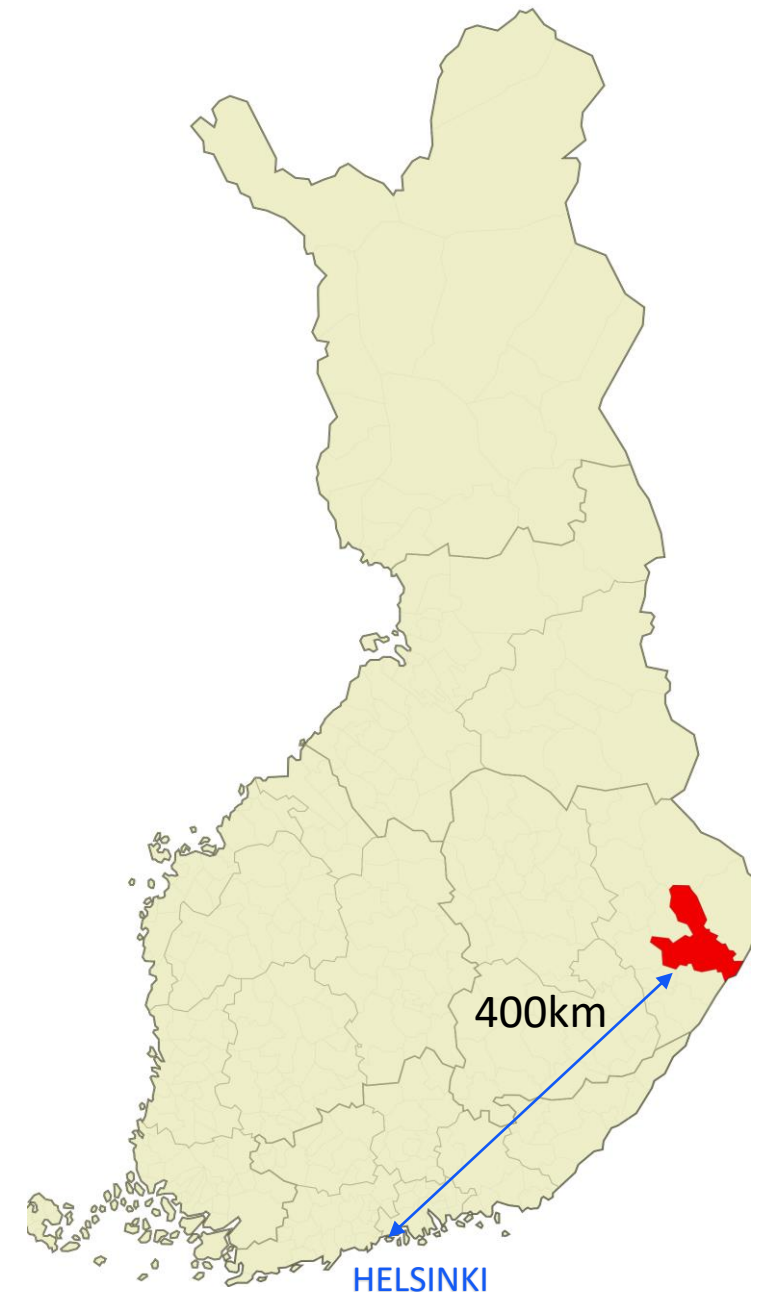


# City of Joensuu in numbers

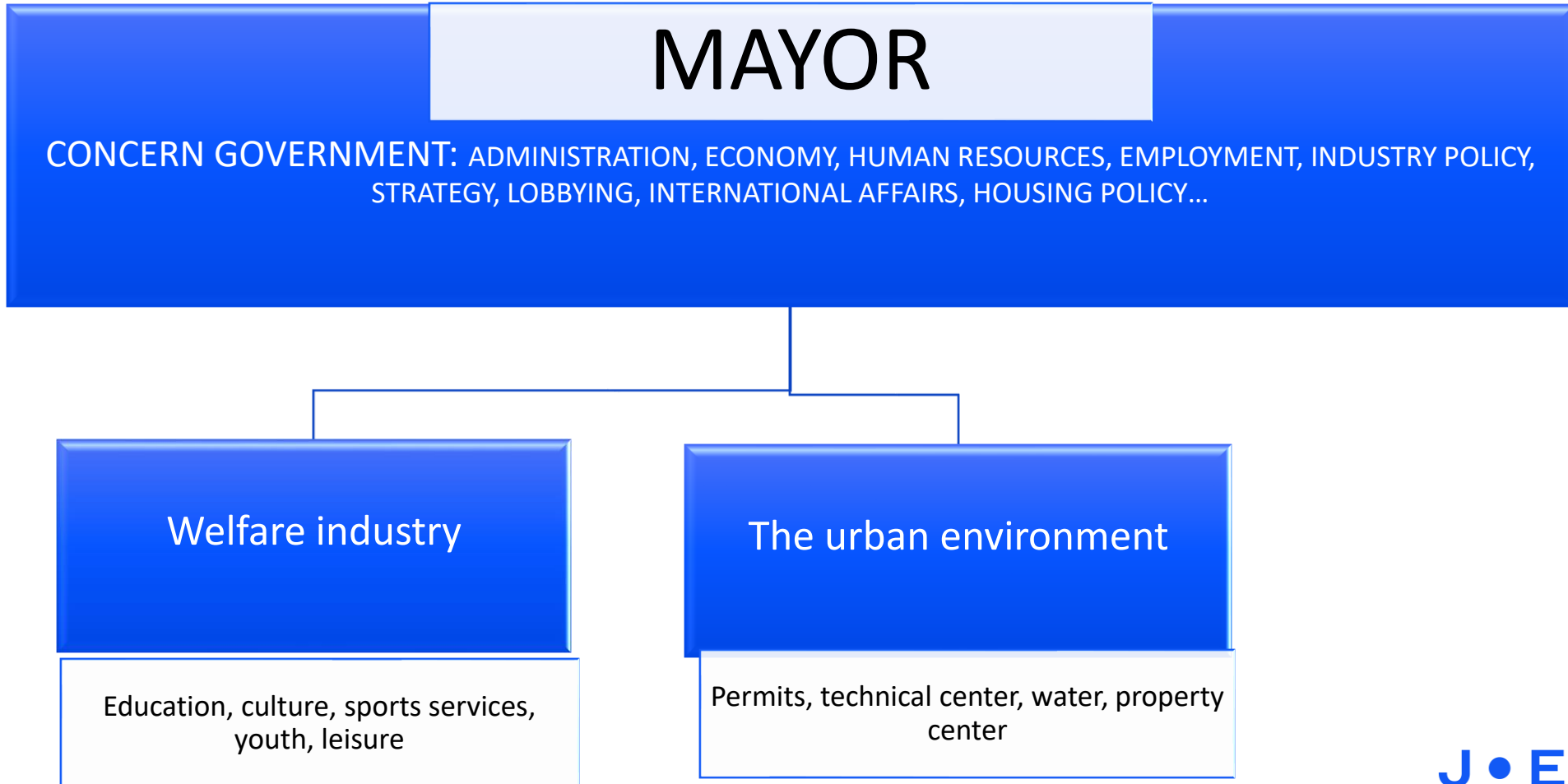
<https://www.joensuu.fi/en/web/english>

- 400km north from Helsinki (1 hour flight or under 5 hour with train)
- Finnish lakeland area with Finnish national landscape Koli nearby ([www.koli.fi](http://www.koli.fi))
- 76500 inhabitants
- modern lively city by the river and lake
- 25 elementary schools, 5 upper secondary schools
- 50 child care centers
- 1/3 of population are students, **biggest student city in Finland in relation to total population** (city children and pupils + Riveria Vocational training, Karelia University of Applied Sciences, University of Eastern Finland)

J • ENSUU



# Organization of Joensuu



## City of Joensuu

552 m€

- from which Welfare industry

160 m€

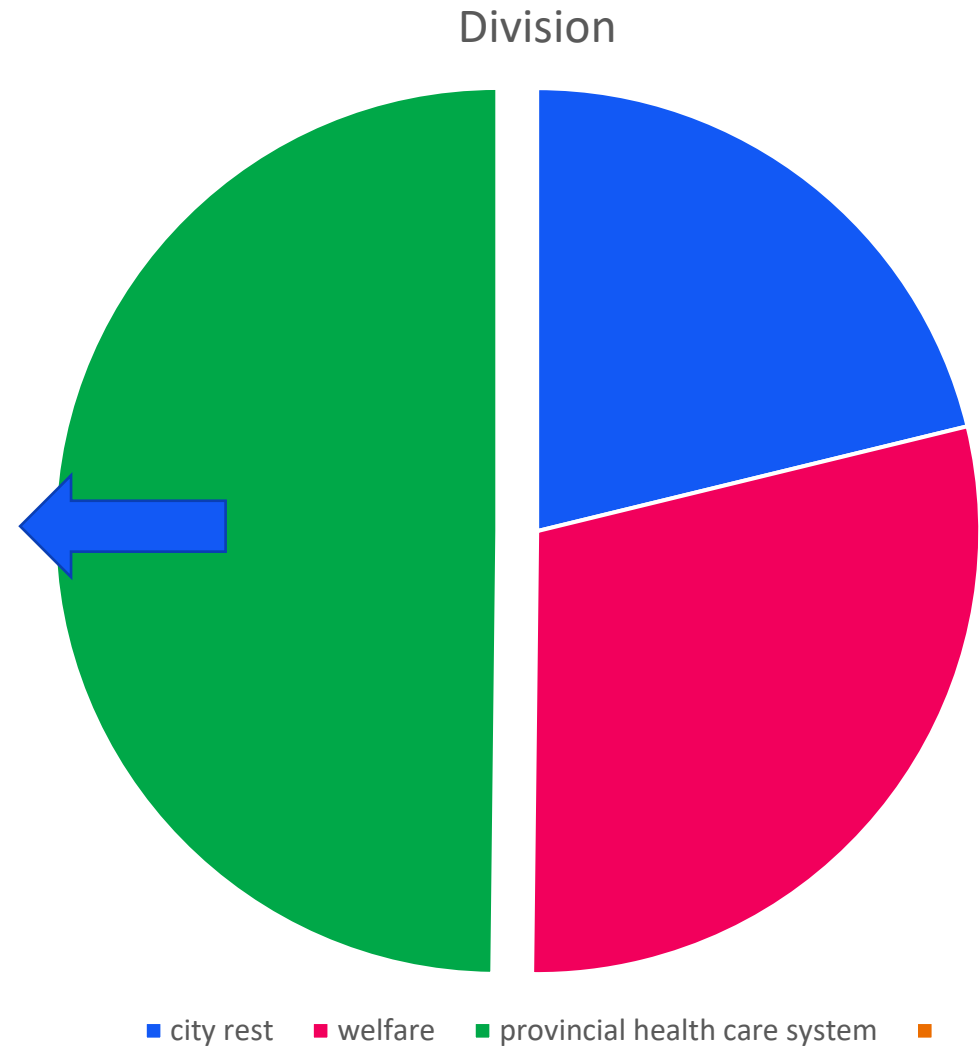
## Provincial health care system

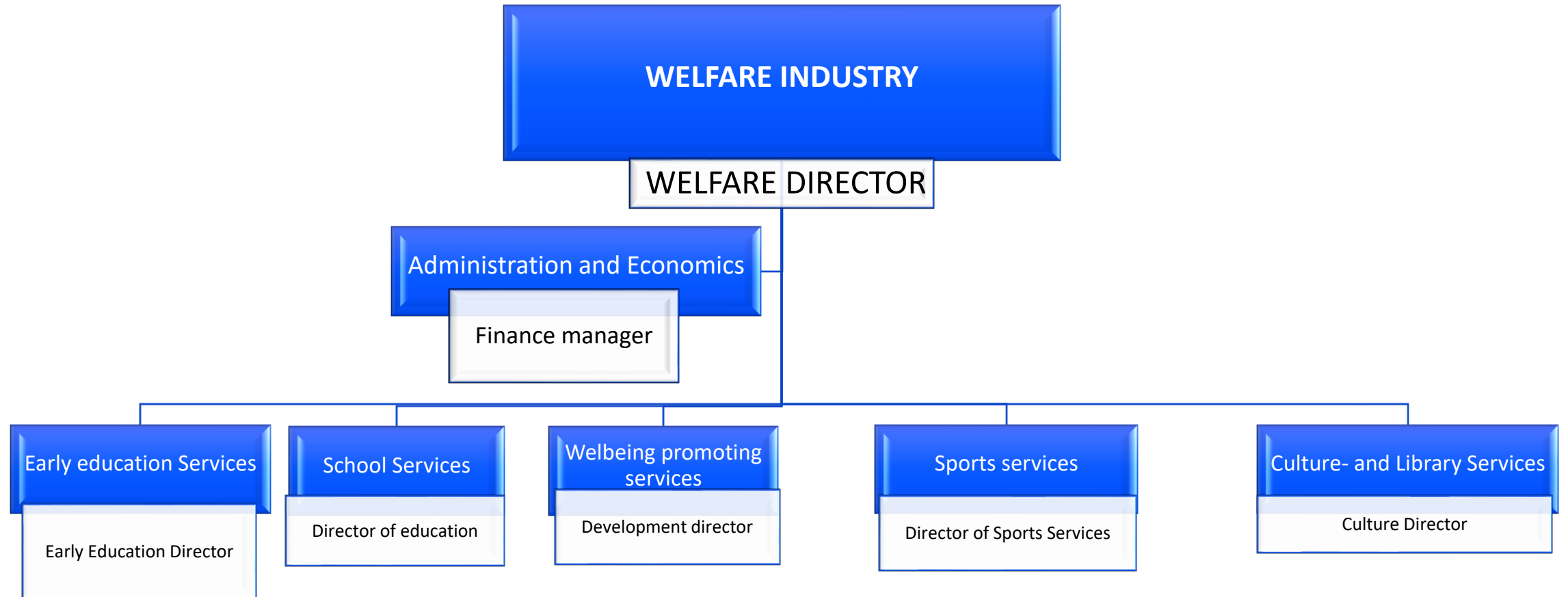
275 m€

- Healthcare is no longer provided by the city, SiunSote (Provincial system):
  - Healthcare
  - family- and social services
    - student care
  - elderly services
  - environmental health
  - rescue department

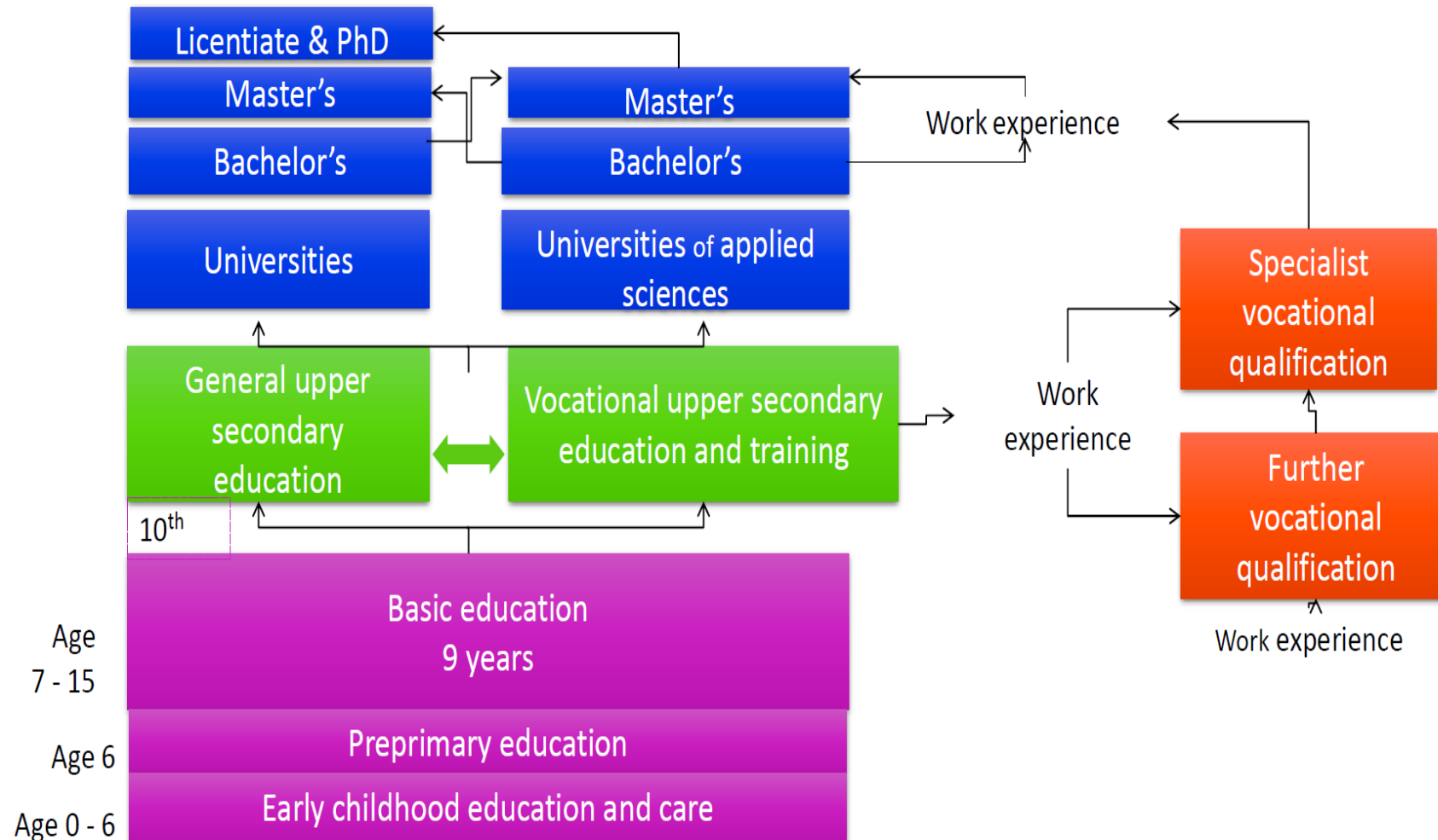
**1.1.2023 -> health care system to state**

Police is provided by the state

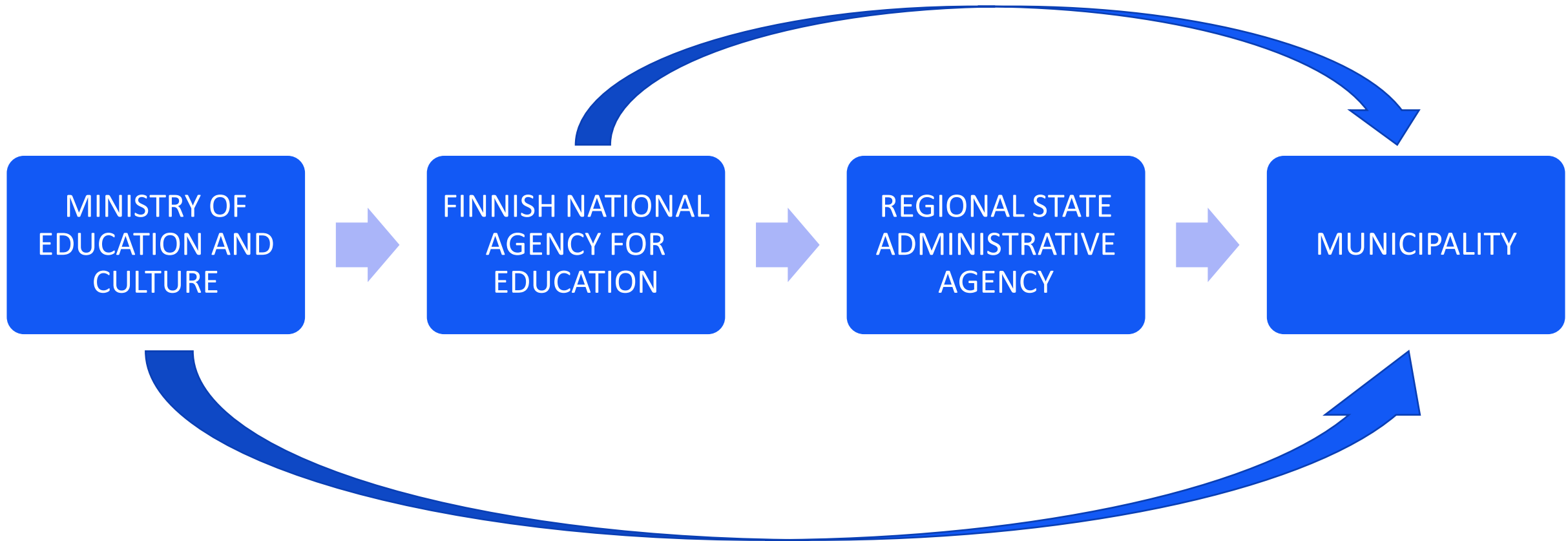




# Finnish education system



# Administrative structure





# National administration

## Ministry of Education and Culture

- Education policy
- Preparation of legislation
- State funding

## Finnish National Agency for Education

- National development agency
- National core curricula & qualification requirements
- Services for learners
- Supporting internationalisation

## Central steering

- Educational priorities
- Minimum time allocation
- National core curricula
- Size of state subsidies

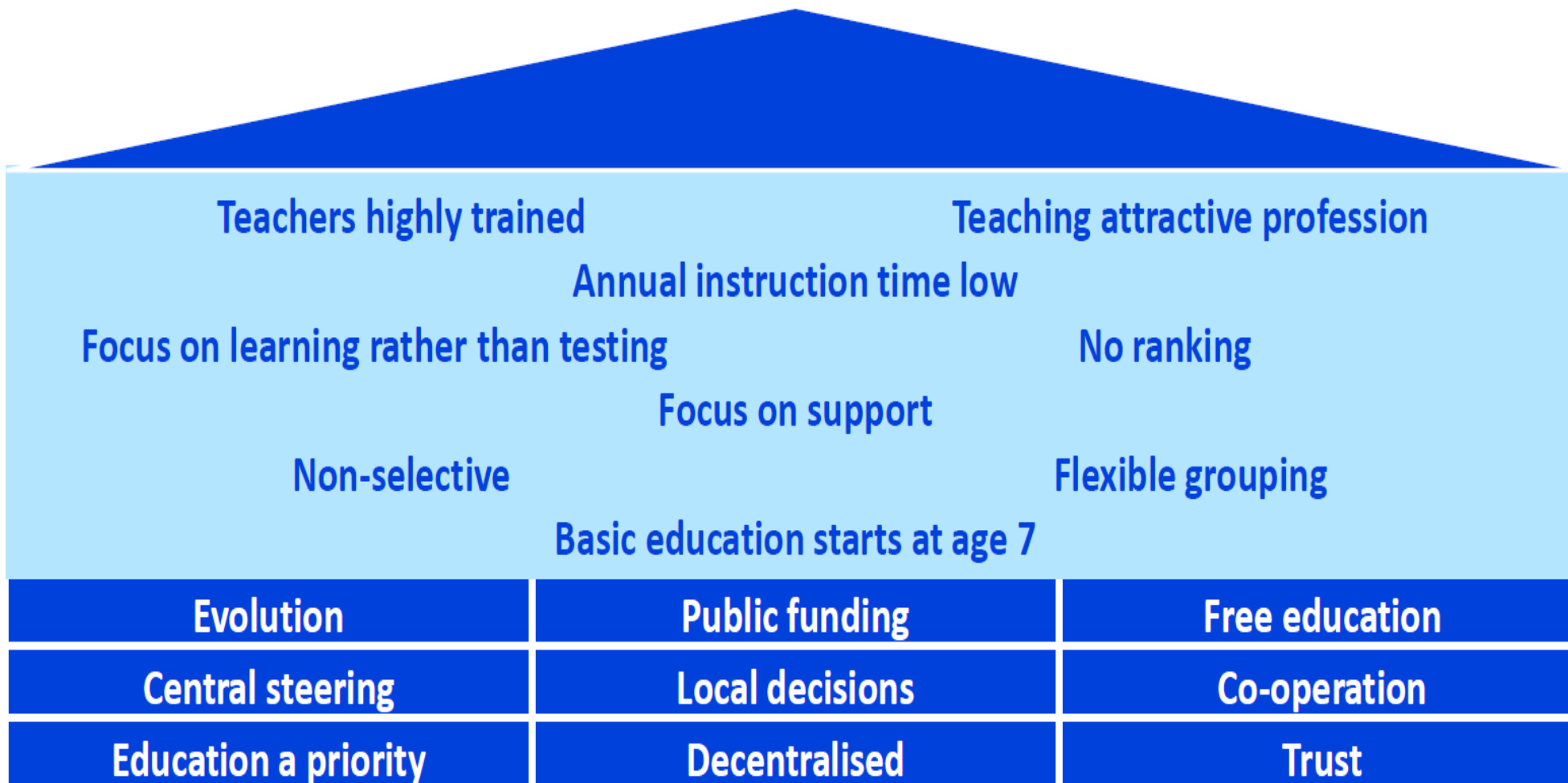
## Local decisions

- Educational priorities
- Local curricula
- Allocation of subsidies
  - Resources to schools
- Class size
- Recruitment
- Teacher "evaluation"
- Quality assurance
  - Supported by Finnish education evaluation center "Karvi"  
<https://karvi.fi/en/>



Regional State  
Administrative Agency

# Specificities of the finnish education system



# Early childhood education and care

- Public (75%) and private (25%), around 50 units (30/20)
  - Max. 290 € / month / child, complicated reduction system
  - Municipality pays service voucher to private sector
- is based on an integrated approach to care, education and teaching, the so-called “educare” model, with particular emphasis on pedagogy
- Three-step support law from 1.8.2022 ->
- Participation rate 1-5 y over 90% (12/2021)
- ca. 3300 children

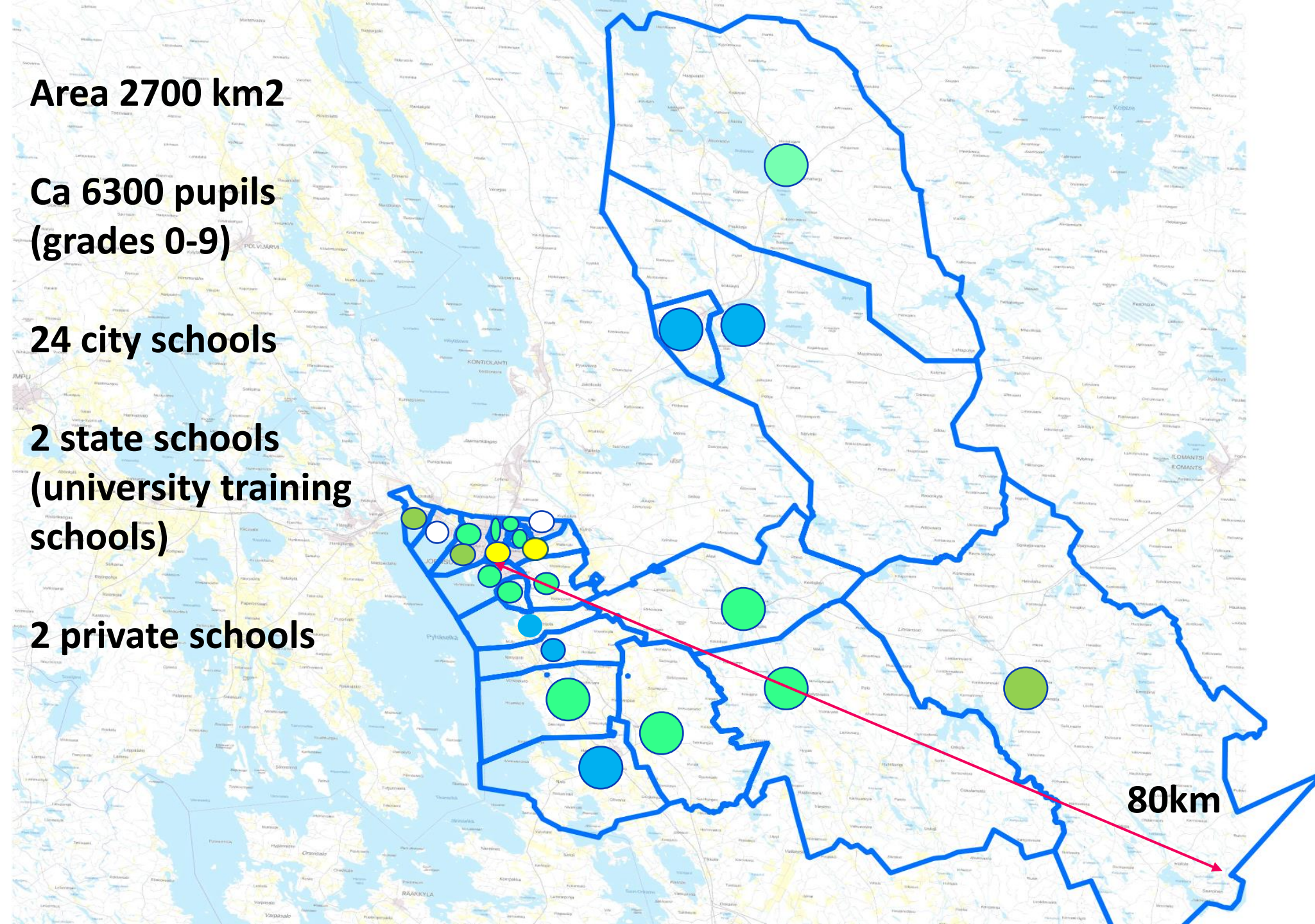
**Area 2700 km<sup>2</sup>**

**Ca 6300 pupils  
(grades 0-9)**

**24 city schools**

**2 state schools  
(university training  
schools)**

**2 private schools**



# Support in learning and school attendance

# Three-step support

- 1. General support
- 2. Intensified support
- 3. Special support
  
- Focus on early and preventive support
  - Early childhood education and care -> school
  - Nearest school principal -> support
    - Special teacher, integrated groups, special needs groups
  - Not just the child – whole family -> family center ideology
    - City, provincial healthcare system, third sector etc.

# Recourses to special education



Factor to schools

Centralized classes

Discretionary





**Assistants in early  
childhood education  
and care (60)**

**Assistant teachers  
(170)**

**Special teachers  
(110)**

**Special teachers for  
pupils that don't  
attend school  
(4)**

# Student care

1. Communal student care (every adult in school)

2. Individual student care

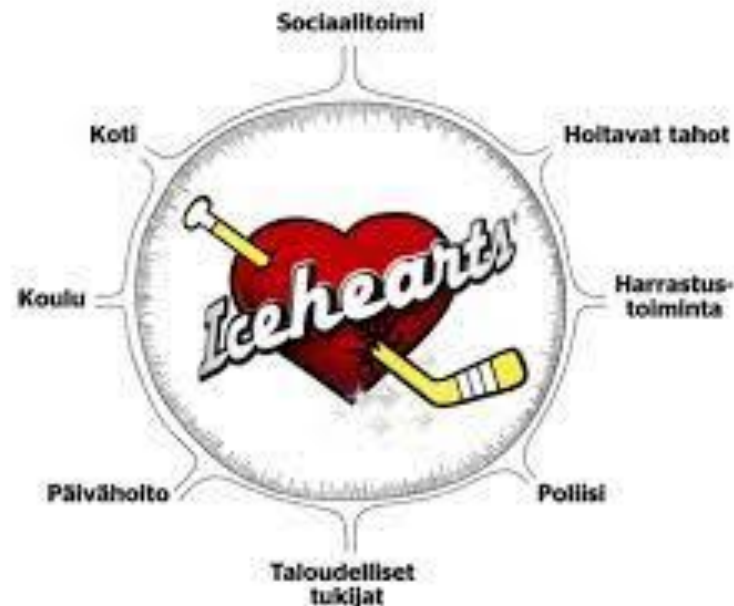
- Psychologist
- Curator
- School health care (nurse, doctor, dentist etc.)
- Multidisciplinary expert group

# Morning and afternoon activities

- Optional to municipality -> in basic education law
- For pupils from classes 1.-2., children in special support (classes 1-9, including handicapped children)
- Max. 760 hours / year = 4 hours / day
- Mainly after school, no school transportation
- 25 clubs, around 530 children
  - 100€ / month / child -> reduction system

# Other structures for support

- Snowmans and snowqueens (ECEC)
- Wellbeing supervisors
- Icehearts <https://www.icehearts.fi/brief-in-english/>



# Development projects

- Aggressive children age 4-10 regional pilot
  - One phone call principle
  - Hole in calendar – system
  - Speaking of children method (schools, early education)
- Children that are not attending school -> drop out risk
  - National project
  - Seeking for preventive methods, procedures and pedagogical and administrative structures
  - Ministry of education and culture, Finnish education evaluation center etc.

# Youth services



# What it is

- Youth centers
- Special youth work
- Youth work shop (3. sector)
- School youth work
- Anchor group in Police department
- Youth council -> participation
- Youth organizational contributions
- **Finnish Hobby Model**



# SIUN SOTE PROVINCIAL HEALTH CARE SYSTEM

**FAMILY CENTER**

STUDENT CARE

SOTE-BOARD

SOTE ORGANIZATIONAL CONTRIBUTIONS

YOUTH SERVICES

SNOWMANS AND SNOWQUEENS

ICEHEARTS

MORNING AND AFTERNOON ACTIVITIES

FAMILY GUIDANCE

WELBEING SUPERVISORS

FINNISH HOBBY MODEL

YOUTH ORGANIZATIONAL CONTRIBUTIONS

EARLY CHILDHOOD EDUCATION AND CARE

**CITY**

SCHOOL SYSTEM

