



Learn With Web 2.0 Tools

INTRODUCTION OF OUR WEBSITE

HOW TO CONTRIBUTE

by Nebile USLU KAPLAN



**OUR FINAL TASK IS
A WEBSITE. WE
WILL CREATE IT ALL
TOGETHER.**

**Our Website consist of
two parts:**

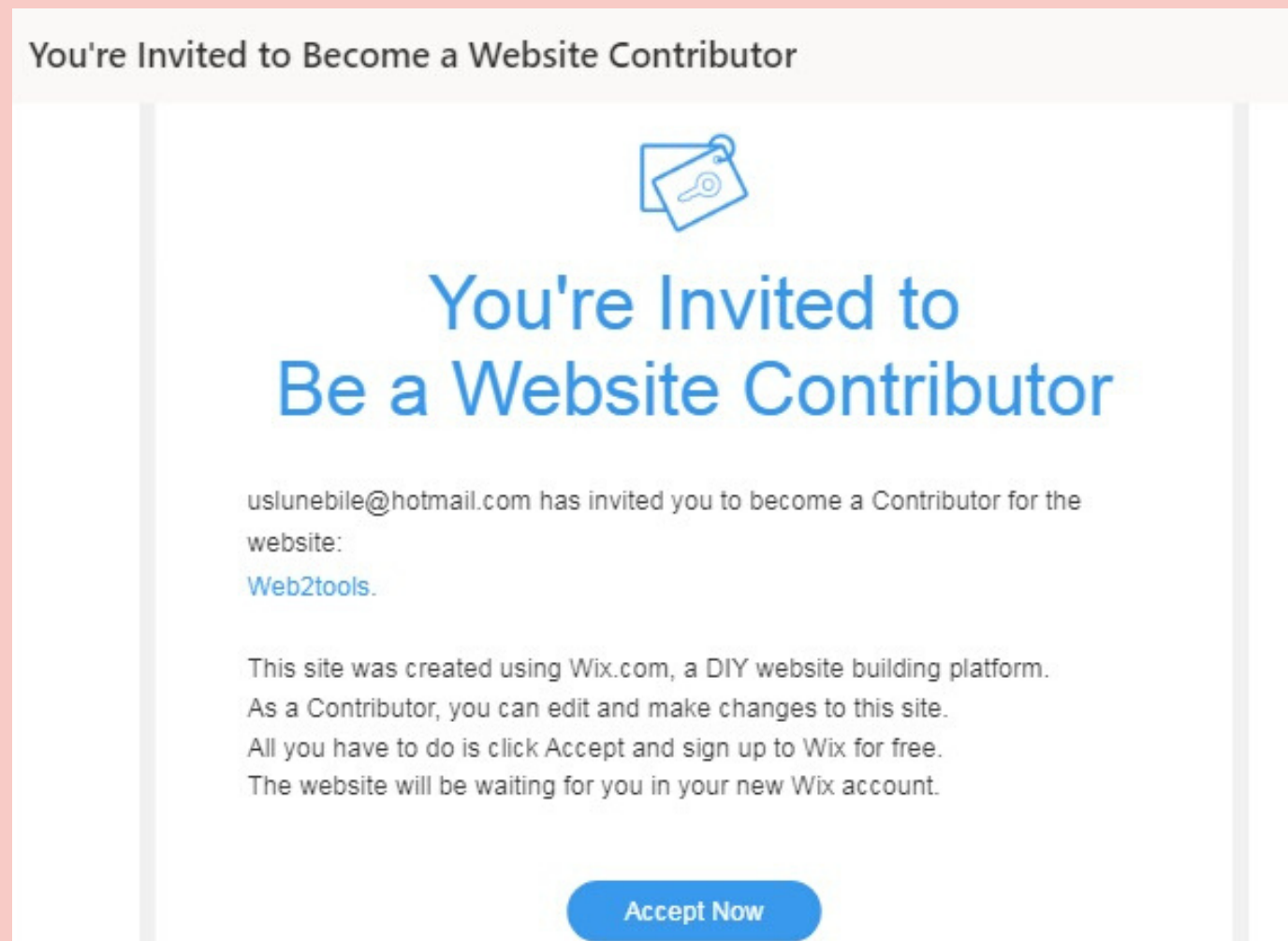
- 1. What we did on our
project (Pages of your
schools)**
- 2. What we used to do
them (Introduction
pages of Web 2.0
Tools)**

WE WILL USE WIX.COM

WHAT TO DO?

FIRST

I'VE SENT YOU AN E-MAIL TO BE A CONTRIBUTOR.GET TO YOUR MAILBOX AND ACCEPT TO BE A CONTRIBUTOR.



SECOND

GET TO THE WIX.COM AND SIGN UP

Create a Website You're Proud Of

Discover the platform that gives you the freedom to create, design, manage and develop your web presence exactly the way you want.

Get Started

CONGRATULATIONS!

You are a contributor anymore!



Web2tools

https://uslunebile.wixsite.com/web2tools

Site Actions



Domain: Not connected
Connect Domain

Website Plan: Free
Compare Plans

Mailbox: Not connected
Connect

Let's Set Up Your Site

2/6 Completed

ONCE YOU SIGN IN, YOU WILL SEE THAT PAGE. YOU SHOULD CLICK ON "SITE ACTIONS" AND CHOOSE "EDIT SITE".

Web2tools

https://uslunebile.wixsite.com/web2tools

Site Actions



- Edit Site
- View Live Site
- Rename Site
- Duplicate Site

THIS IS THE HOMEPAGE OF OUR WEBSITE

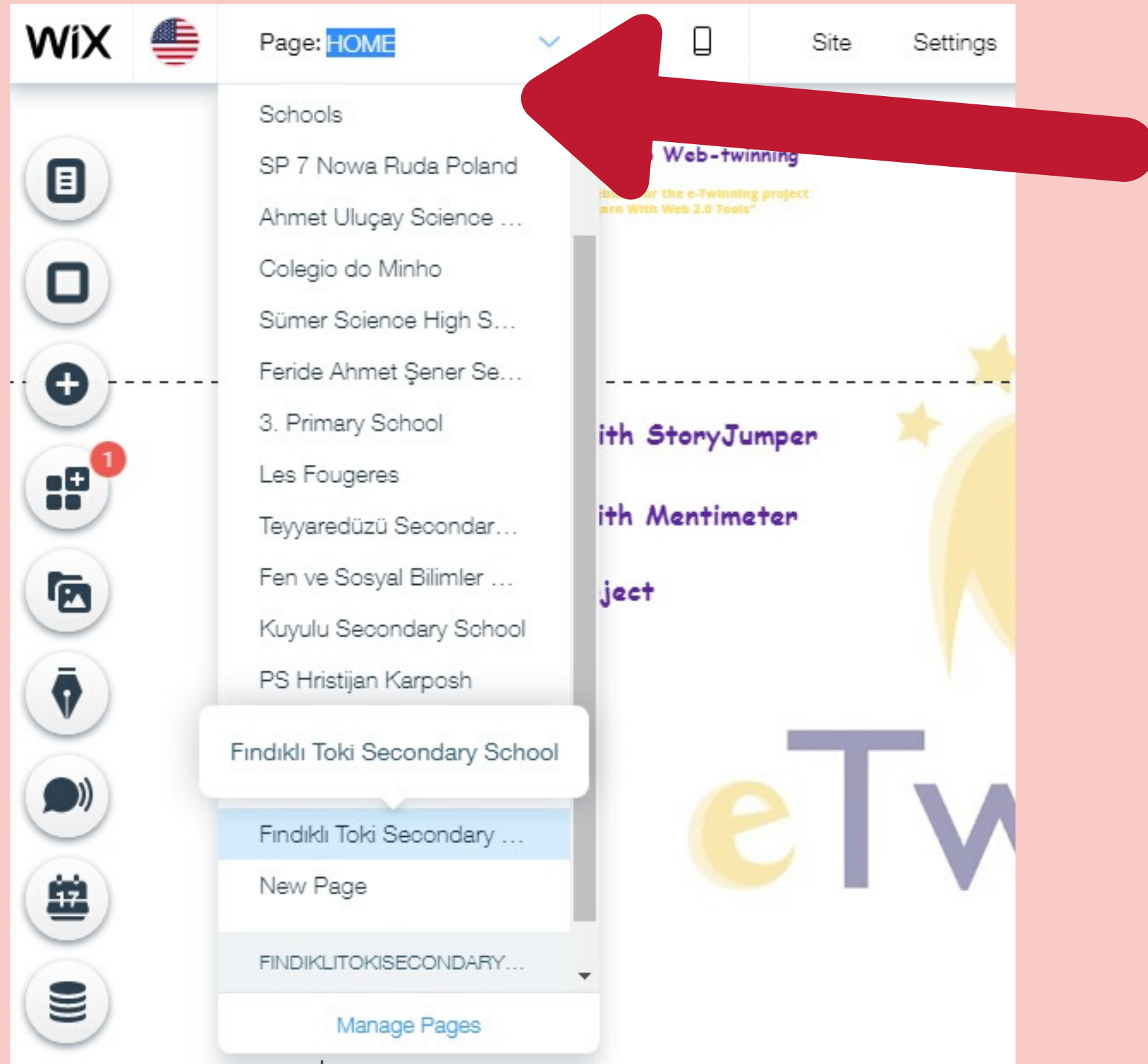
DON'T FORGET THAT YOU WILL NOT EDIT ANYTHING ON HOMEPAGE. YOU WILL ADD YOUR WORKS ON YOUR SCHOOL'S PAGE!



The screenshot shows the eTwinning website homepage within a web editor interface. The editor's top bar includes a language selector (USA flag), 'Page: HOME', device view icons, and navigation links for 'Site', 'Settings', 'Tools', 'Dev Mode', and 'Help'. On the right side of the editor, there are icons for search, back, forward, 'Save', 'Preview', and 'Publish'. The website content features a yellow 'Home' button in the top right. The main area contains a central graphic with two stylized figures (one yellow, one purple) and several yellow stars. Below the graphic, the text 'eTwinning' is displayed in a large, blue, sans-serif font. On the left side of the main content area, there is a vertical list of links: 'Our Online Book with StoryJumper', 'Our Word Cloud with Mentimeter', 'Schools of the Project', and 'Web 2.0 Tools'. A vertical toolbar on the far left of the editor contains various editing tools, including a red notification bubble with the number '1'.



ALSO, Don't forget that You will add your works into that lines. If you add outside the lines, your works will not be seen on mobile phones.



HOW TO GET TO YOUR SCHOOL'S PAGE

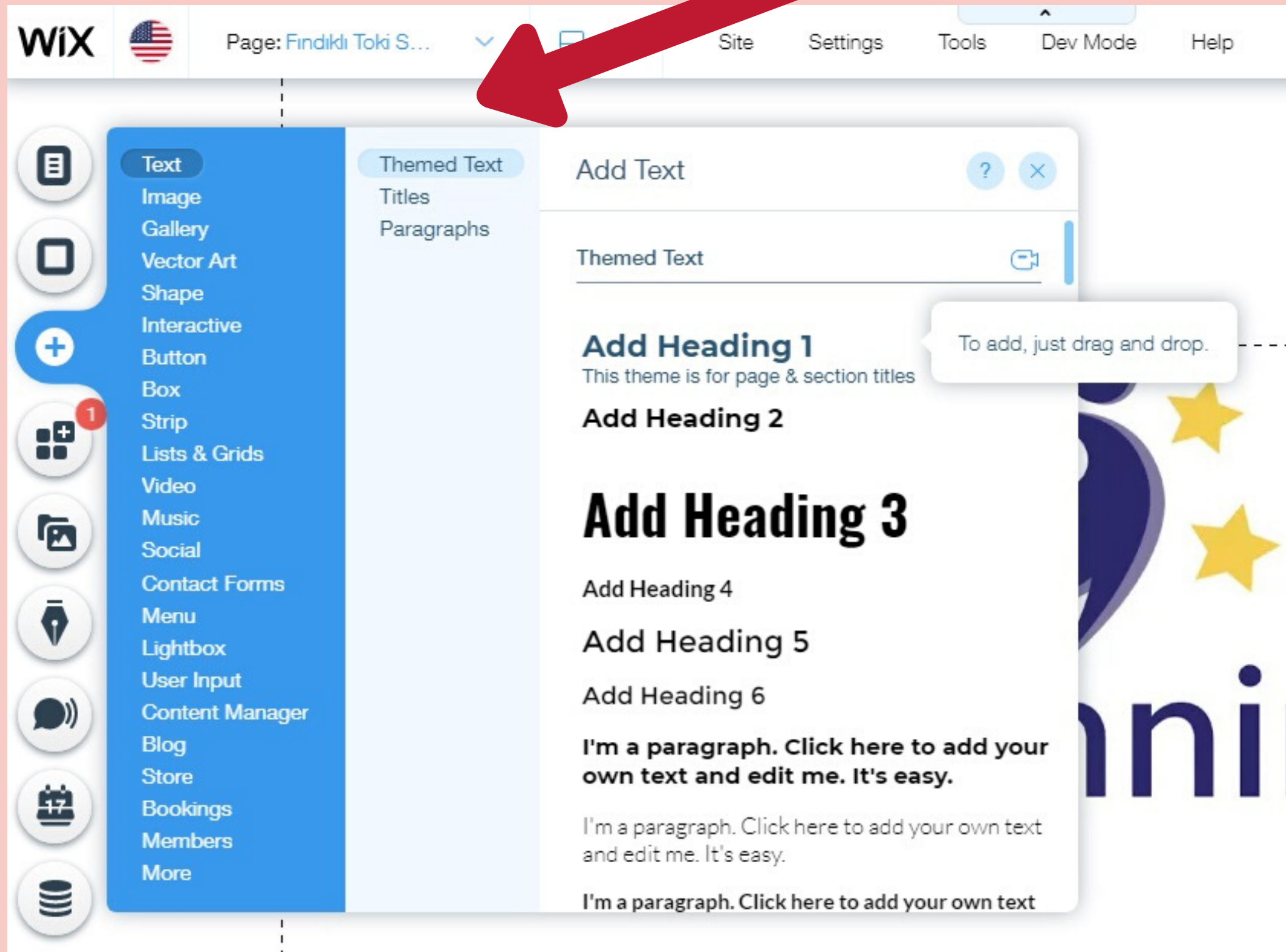
On the top of the left side of website, there is the "PAGE" section. You will click on it. Then the list of the pages are open.

It's time to find your school's name. Once you get the page, click on it and your School's page will be open.



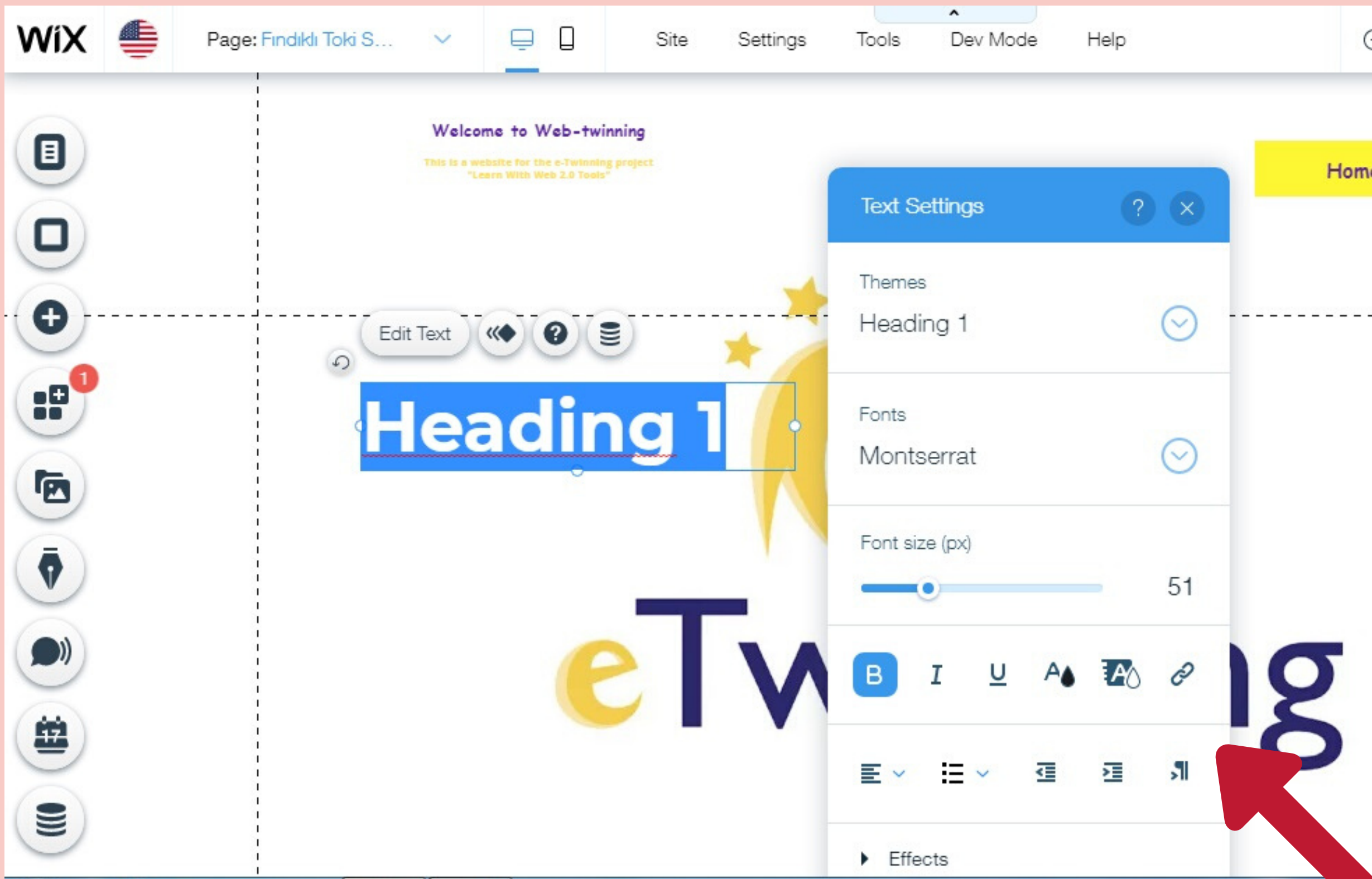
Now you are in your page.

You will add your works in this page. You will not add anything on another page. Never forget the lines because otherwise your page will not be seen on mobile phones.

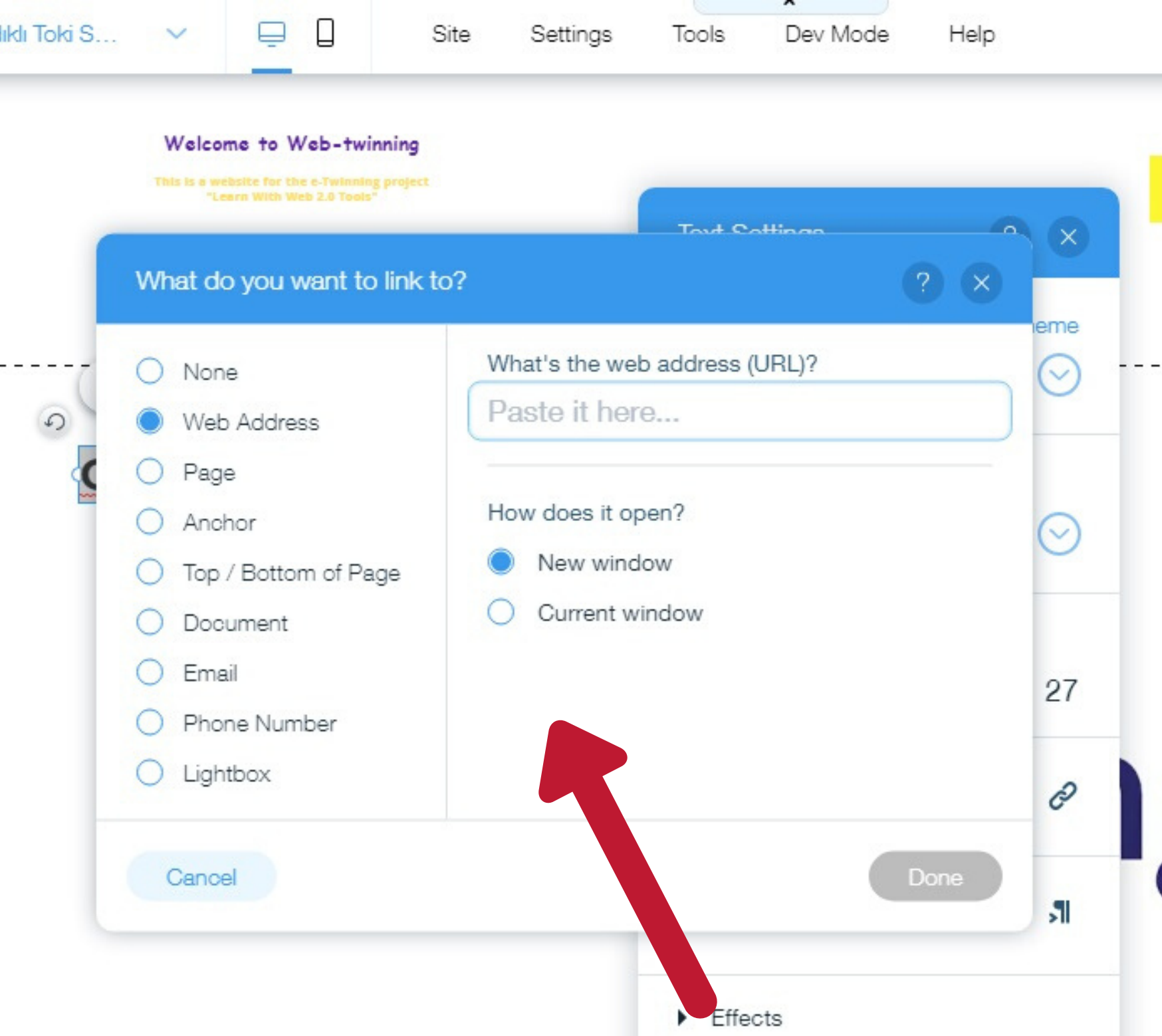


How to add something on your page?

On the left side of the page, there is a "+" button. You will click on it. Then, there is the list of the things you can add.

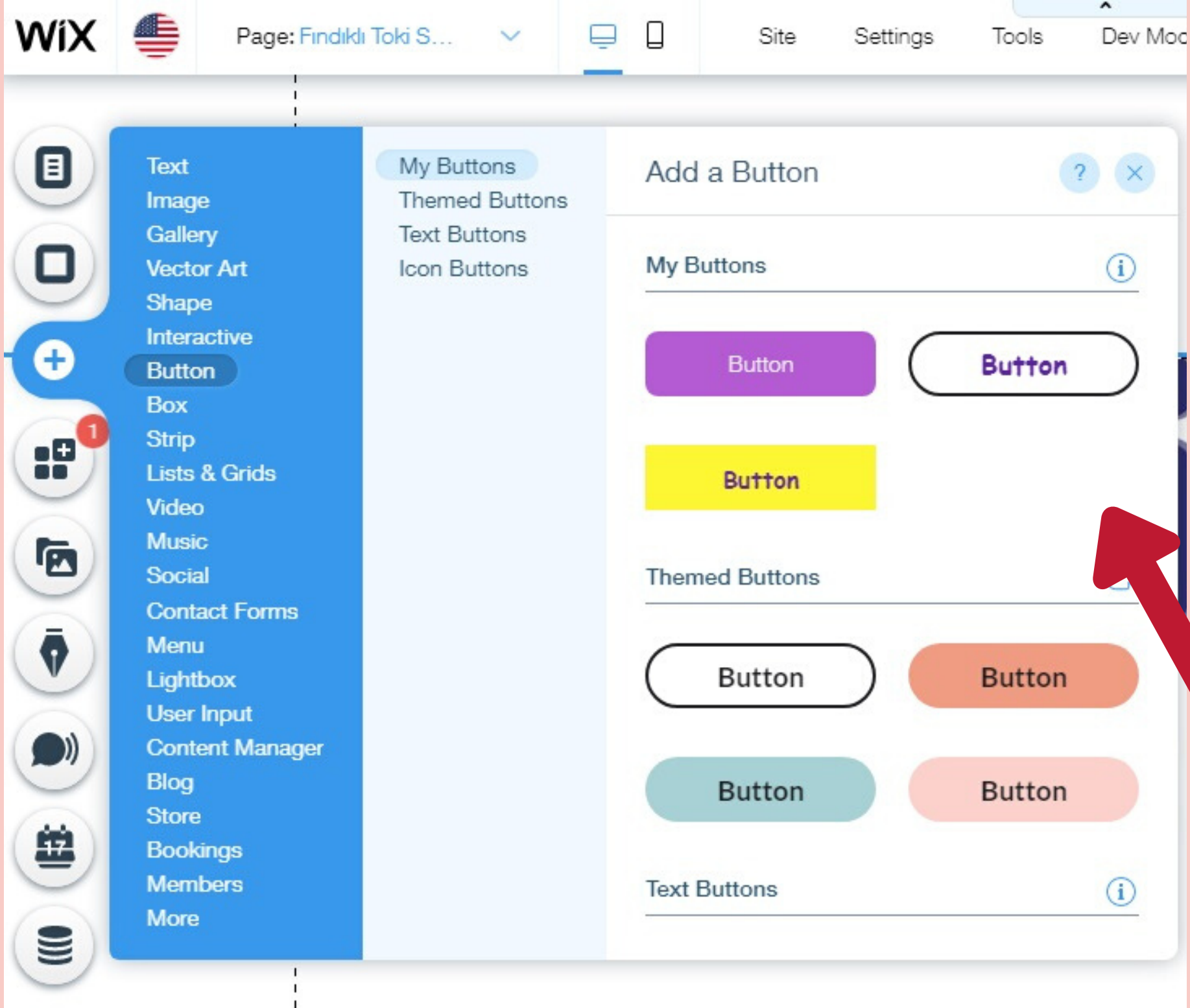


For example, you want to add a text. Click on the text and choose one of the themes. You can change the font, font size, theme, color, so forth. You can also change its position.



How to add a link to your text?

Select your text and right click on it. There is the link icon. Click on it and there will appear the link list. Choose Web Address. Paste your link and complete adding link.



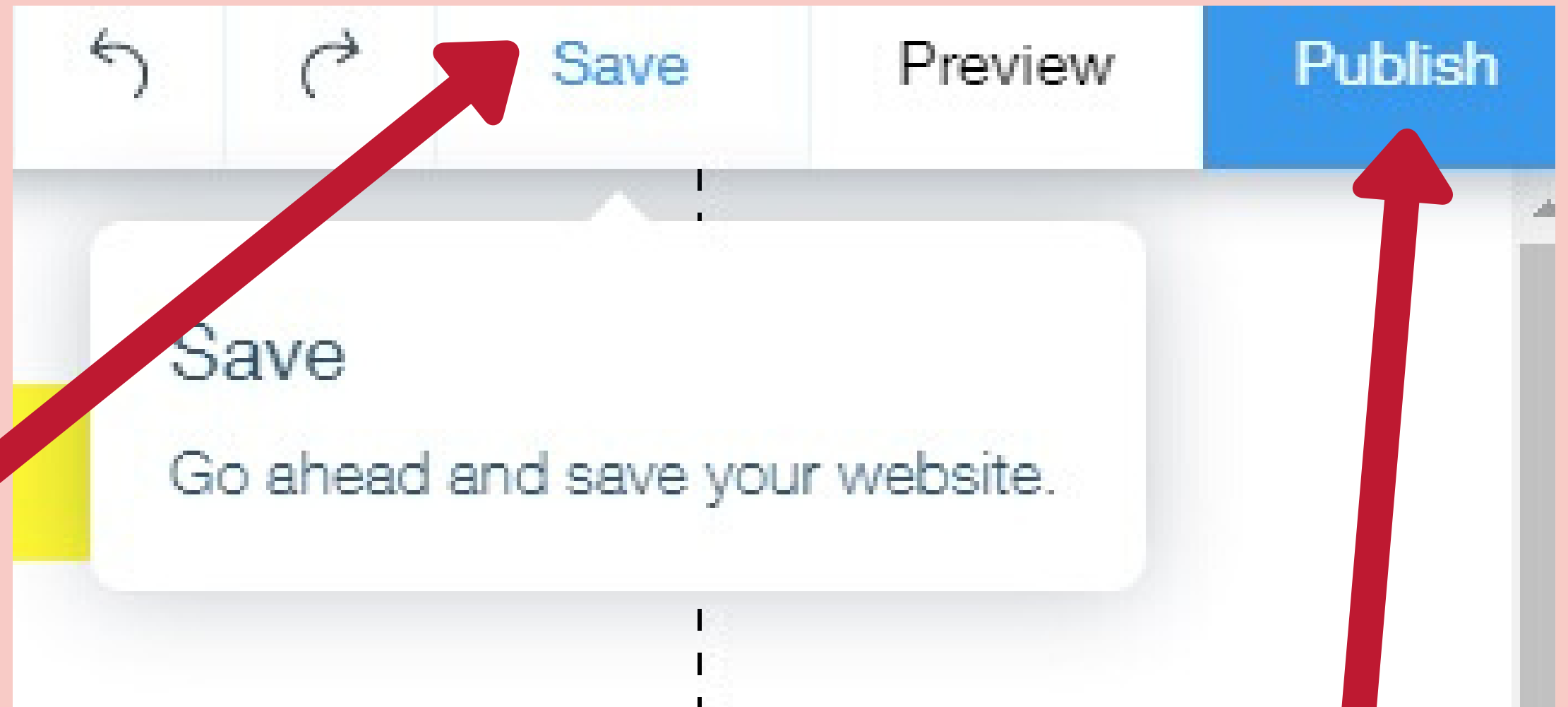
How to add a button?

Click "+" icon and choose **Button** section. Choose a button theme and click on it. You can write a text on it and change it's position.

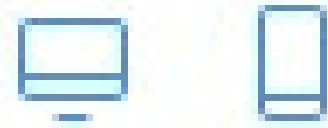
You can also add a link to your button. It's done just as the way you do on a text.

How to save your changes?

Once you've finished your work, you should save your changes. On the right upside the page, there is the "SAVE" button. You should click on it and save your page.



When you save, it's going to be just saved but not published. To publish your changes, you should also click on "PUBLISH" button.



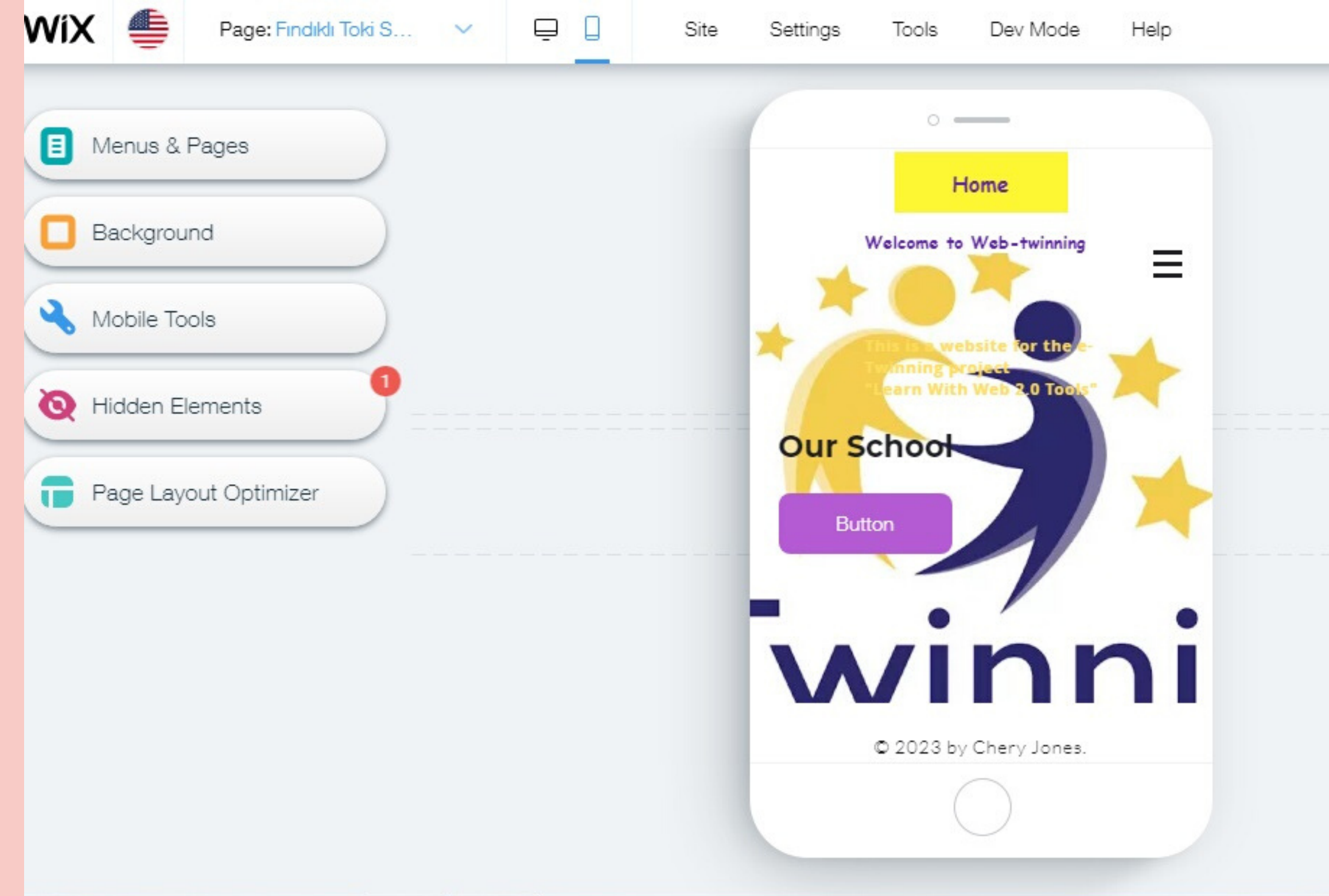
Switch to Mobile

Edit your site for mobile.

Mobile Form of the Site

To get to the mobile form of the site, you should click on the **MOBILE ICON on the top of the page.**

When you get to Mobile, you will see how your page will be seen on mobile phones. You can edit, preview, save and publish your page.



**THIS IS
THE
MOBILE
FORM OF
THE PAGES.**

**YOU CAN DO ALL THE CHANGES WHEN IT'S
ON MOBILE FORM AS I MENTIONED ABOVE.**

The second part of our website is the Introduction of Web 2.0 tools that we used in our project.

Each school of us will be responsible for the introduction of tools, We will choose one or two of them. We will prepare the introduction of the tools. Then, we will add them on the page of the tools. There will also be pages for the tools just as the school pages.

The end of our project is April, 2020. So, the deadline of the changes of Website is the last week of March. Try to finish your works before it, please.

By the way, if you have any problem, never hesitate to ask..